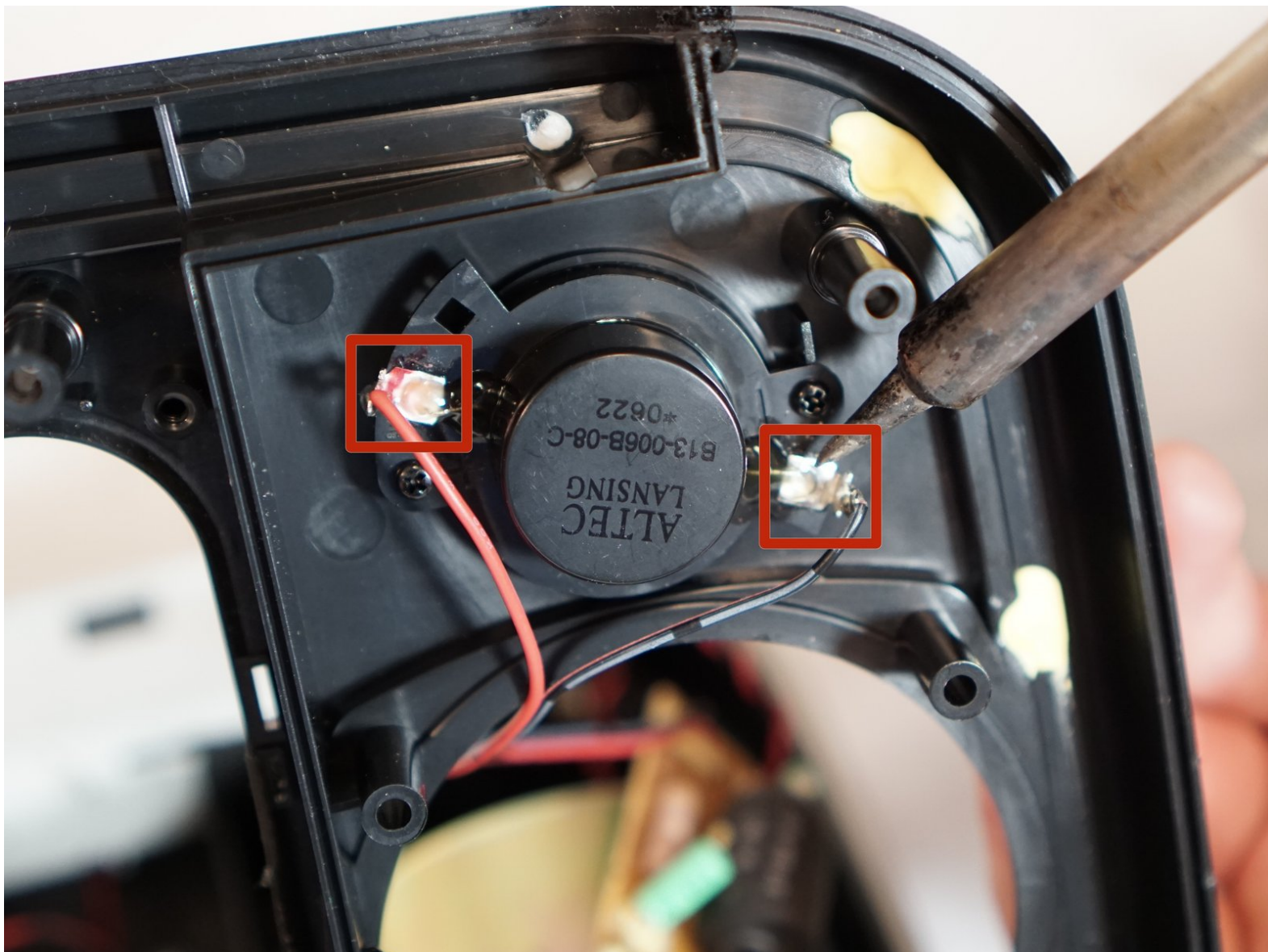




# Altec Lansing inMotion iM9 Tweeter Replacement

This guide replaces the tweeter on the Altec Lansing inMotion iM9.

Written By: Shaun Steele



---

## INTRODUCTION

The tweeter is the component that outputs the higher pitches of music. Replacing the tweeter requires the removal of the batteries and the volume and power buttons. Also, this guide requires soldering skills: for help with soldering check out the [soldering guide](#).



### TOOLS:

- [Soldering Iron](#) (1)
  - [Phillips #1 Screwdriver](#) (1)
  - [Desoldering Braid](#) (1)
  - [Spudger](#) (1)
-

## Step 1 — Battery



- Gently push down on the two tabs at the top of the battery door.
- While holding them down, slowly pull the door towards you.

## Step 2



- Once the door is open, use your hand to pull out the four batteries.

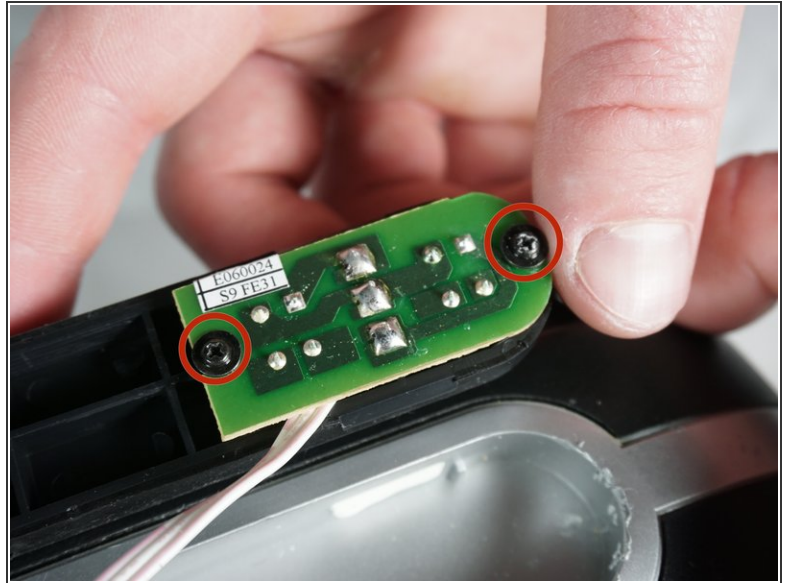
### Step 3 — Volume and Power Buttons



- Pry off the control panel on top of the speaker using the metal spudger. You may need to use a lot of force.
- ⓘ Start in the middle and work your way around the perimeter.

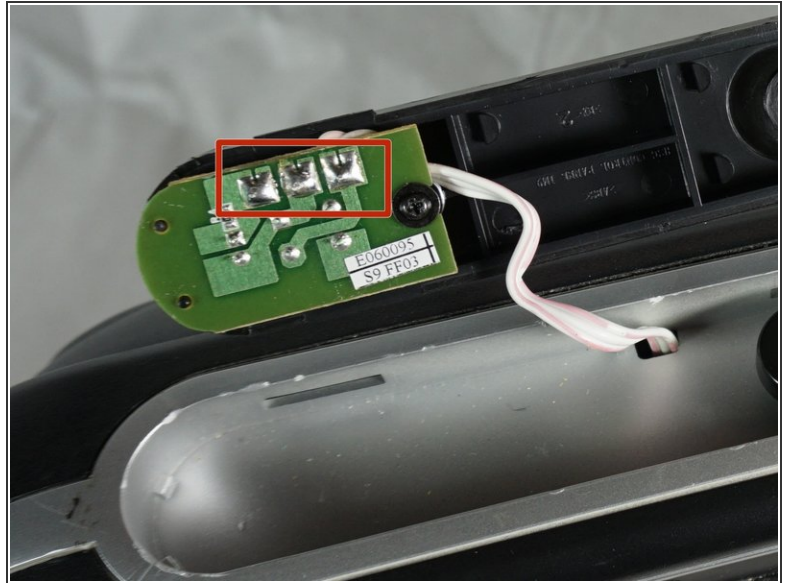



## Step 4



- Using a Phillips #1 screwdriver, remove the two 7mm screws that hold the volume button circuit board to the control panel.
- Also remove the single 7mm screw from the power button circuit board on the opposite side.
- ⓘ There will be a little plastic piece under the eject button that you can just remove and set aside.

## Step 5



- Desolder the three solder joints connecting the wires to the volume button circuit board.
  - Do the same to the power button circuit board on the other side (the board with only one screw).
  - Pull out the wires using a lot of force.
-  If you are not familiar or comfortable with soldering, use this [guide](#)

## Step 6 — Case Opening



- Gently pry open the silver plastic lining of the iPod dock using the plastic spudger.
- It is best to start from the top or bottom, then work your way around if it has not popped out yet.
- Remove the silver lining.



## Step 7



- Pry open the metal mesh by working the plastic spudger around the inside of the mesh.
- Once loose, lift up the metal mesh.

## Step 8



- Remove the fourteen 30mm screws with Phillips #1 Screwdriver.
- Remove the 7mm screw with the Phillips #1 Screwdriver.



## Step 9



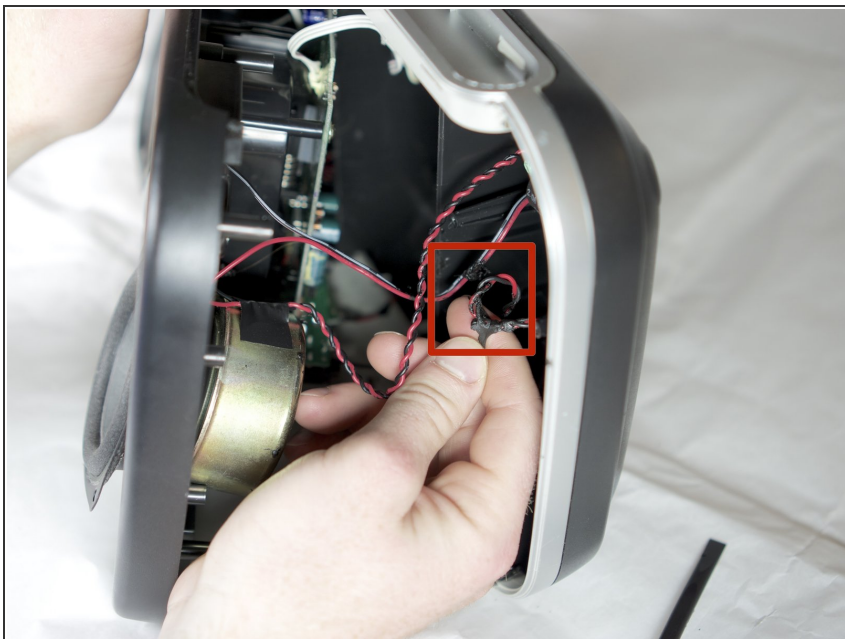
- Carefully separate the front and back case plates at a corner of the speaker.
- ⚠ Lots of cables are still connected, so be very gentle when separating case plates.

## Step 10



- Guide the white button cables through the hole on the top of speaker case.

## Step 11



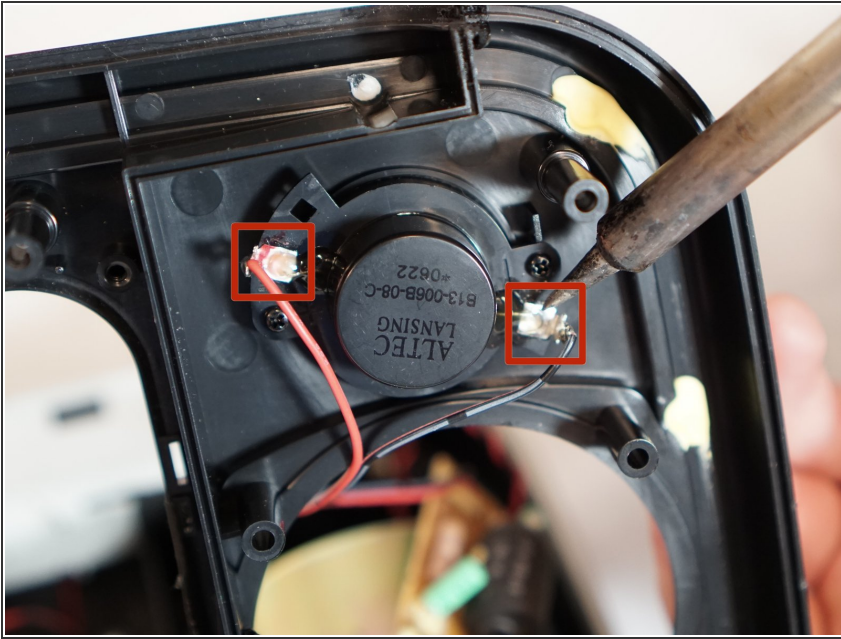
- Use your fingers to peel the glue off of the red and black cables.

## Step 12



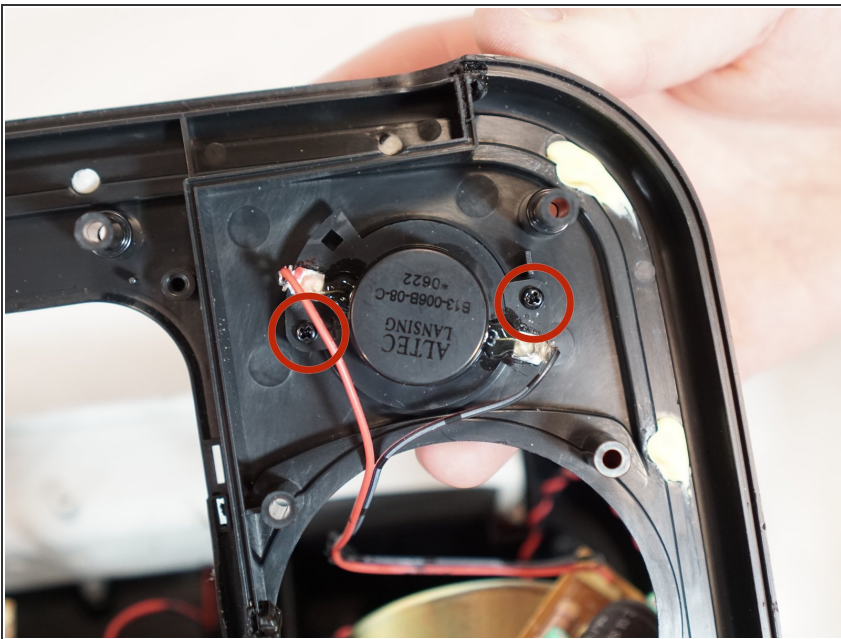
- ⚠ Careful not to touch the green capacitors or you might shock yourself.

## Step 13 — Tweeter



- Remove the speaker cables by desoldering the two solder joints on opposite sides of the tweeter.

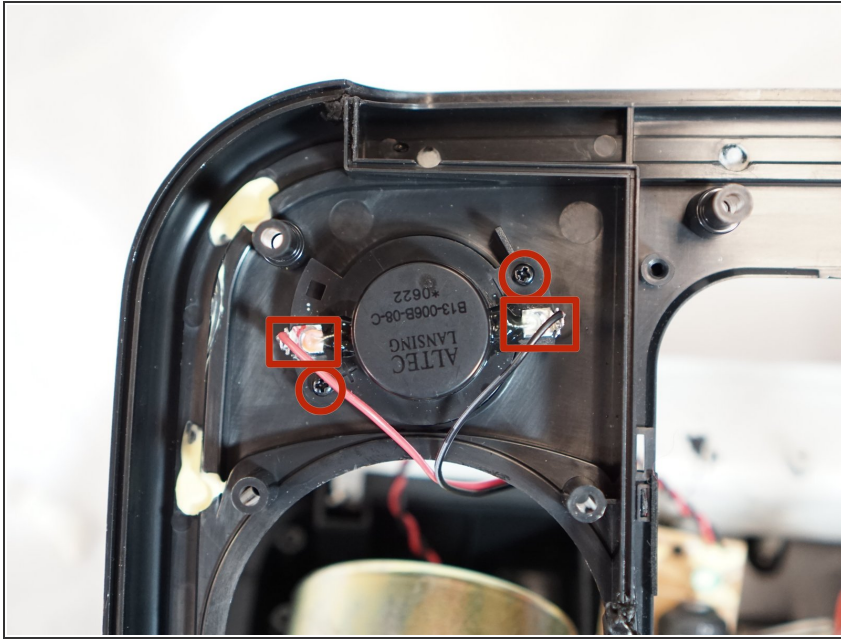
## Step 14



- To fully remove the tweeter from the device, unscrew the two 7mm screws and the tweeter will be free.



## Step 15



- Follow the previous instructions to remove the second tweeter on the opposite side of the speaker.

To reassemble your device, follow these instructions in reverse order.