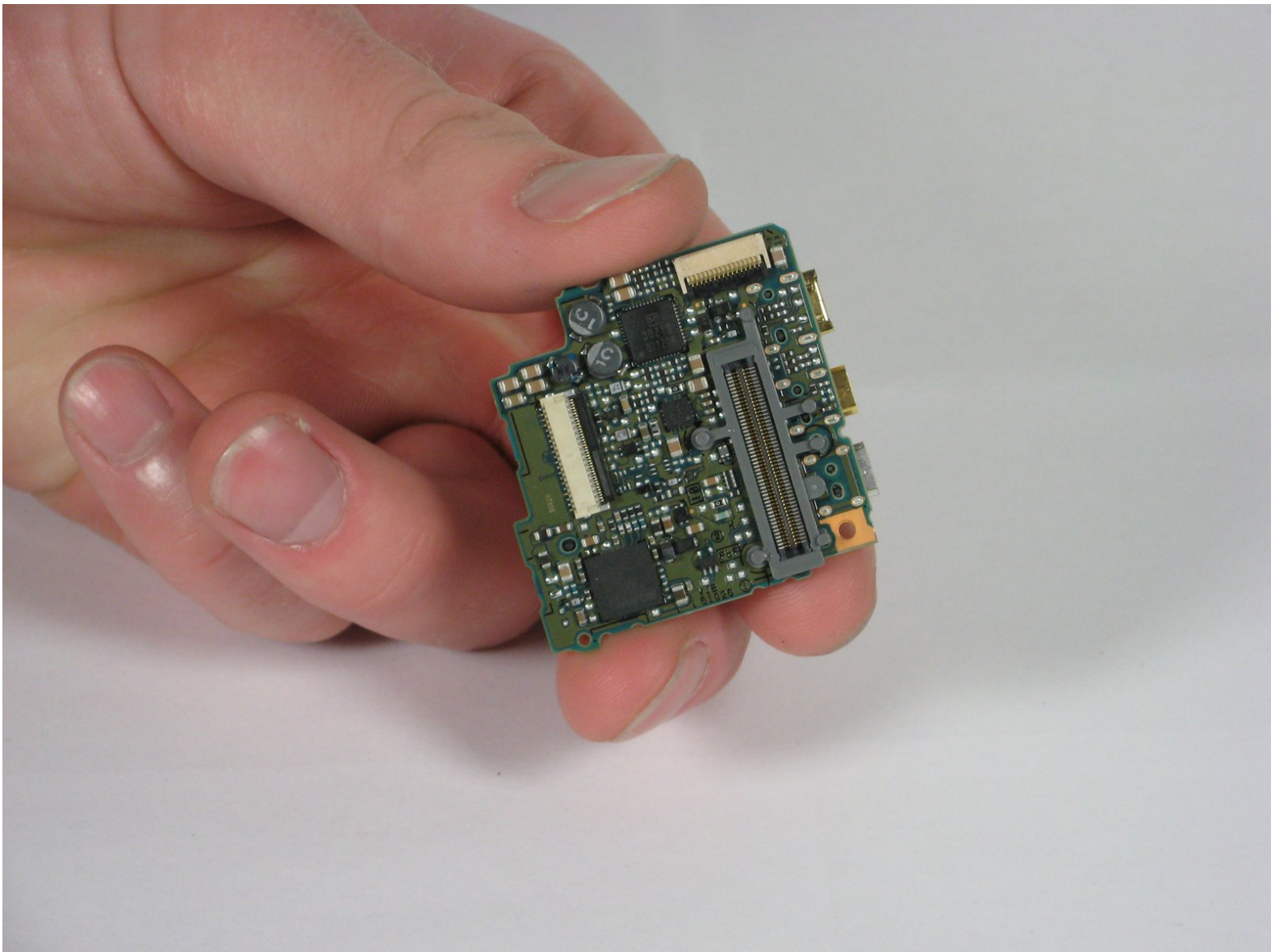




Panasonic Lumix DMC-TZ5 AV port circuit board Replacement

This guide will tell you how to remove and replace the AV port circuit board in your Panasonic Lumix DMC-TZ5.

Written By: Kevin Lufkin



INTRODUCTION

This is the circuit board that the AV chord attaches to for transferring images.

TOOLS:

- [Phillips #00 Screwdriver](#) (1)
 - [Spudger](#) (1)
-

Step 1 — Back Cover



- Remove the battery and memory card from the device.

Step 2



- Remove 4 screws from the right side of the camera.
 - There are two 3.4mm screws at the top.
 - There are two 2.2mm screws at the bottom.

Step 3



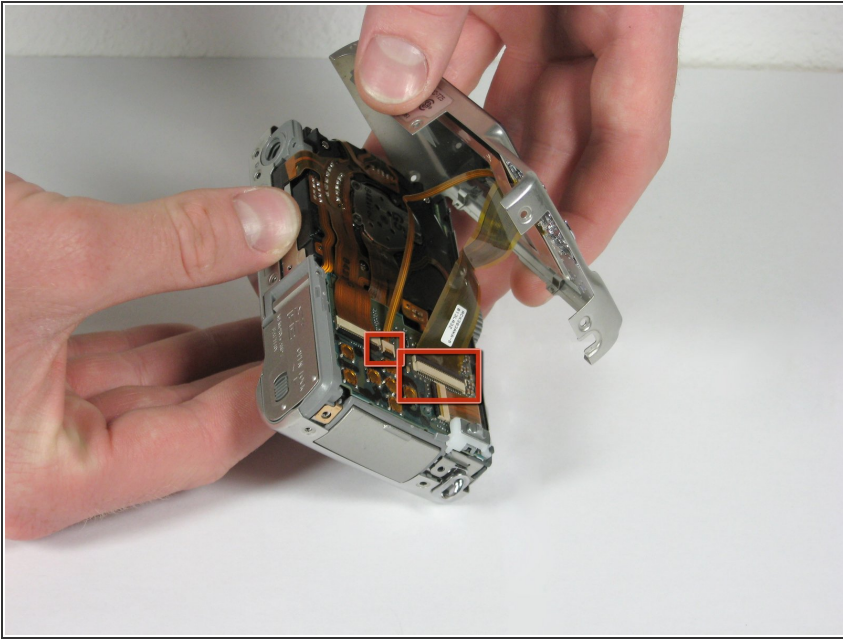
- Remove the single 3.4mm screw on the left side of the camera.

Step 4



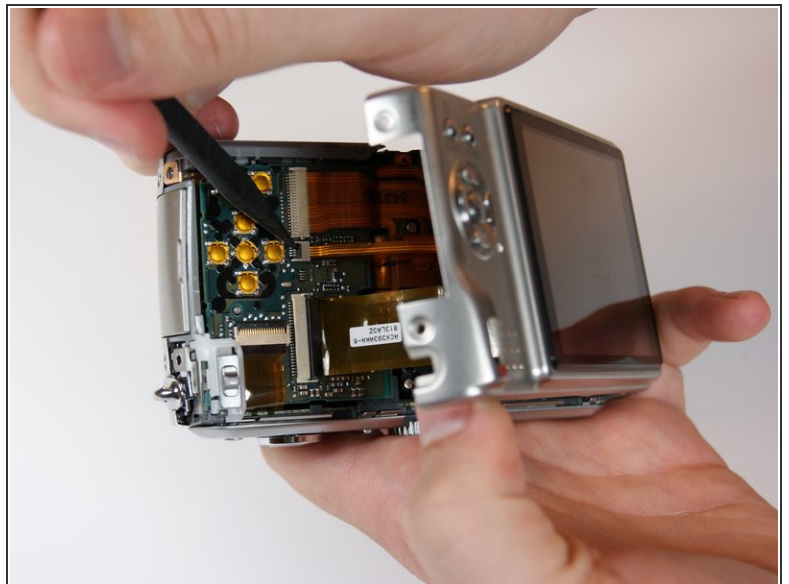
- Remove 5 screws from the base of the camera.
 - There are two 2.2mm screws next to the battery compartment.
 - There are three 4mm screws around the tripod mount.

Step 5



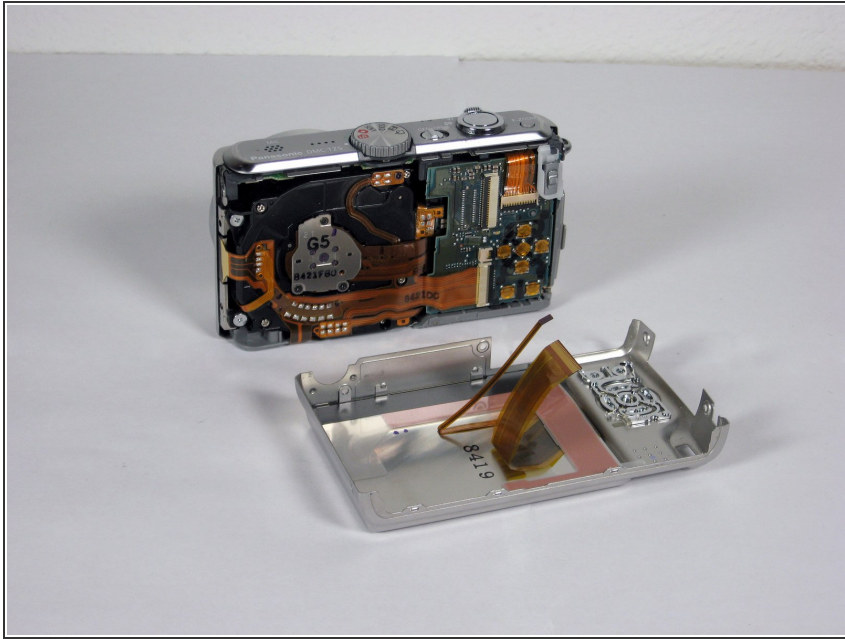
- Slowly slide the back cover away from the device
- ⚠ The back casing is held in place by two ribbon cables. Do not pull the back cover too far from the camera.

Step 6



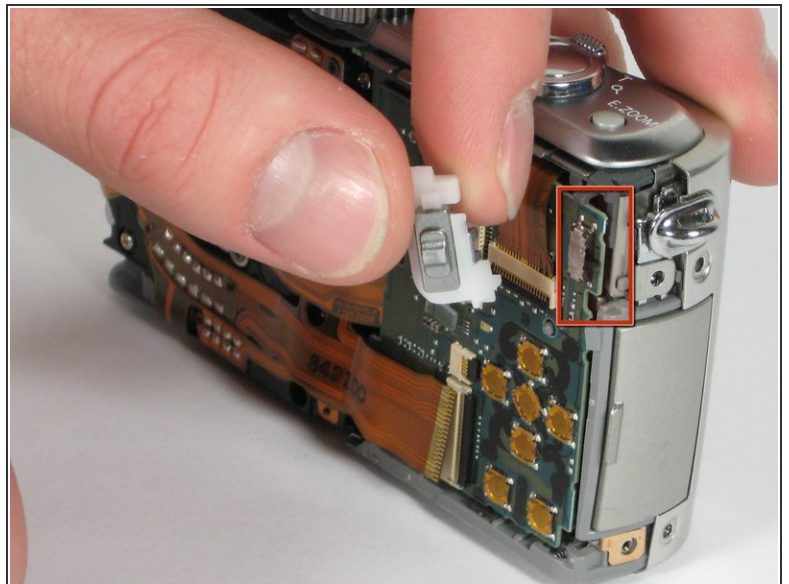
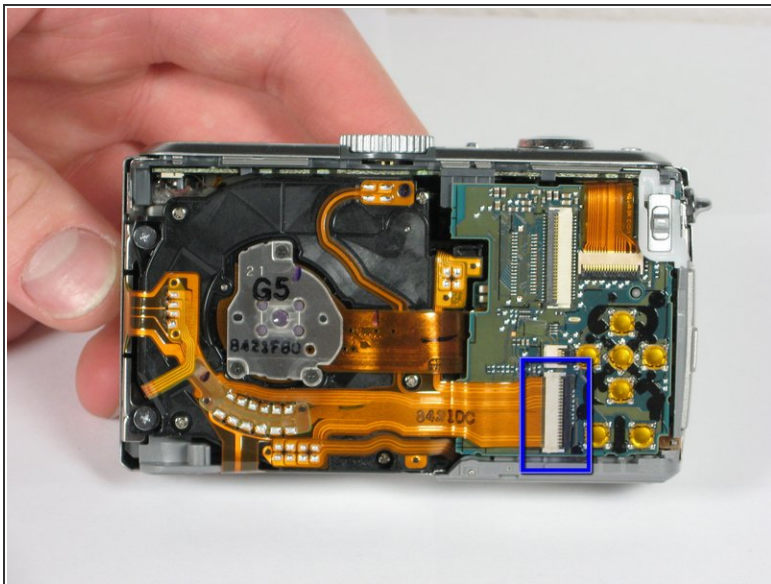
- Detach both ribbon cables using a spudger.
- Use the tip of the spudger to lift the black clip upward, unlocking the ribbon cable.

Step 7



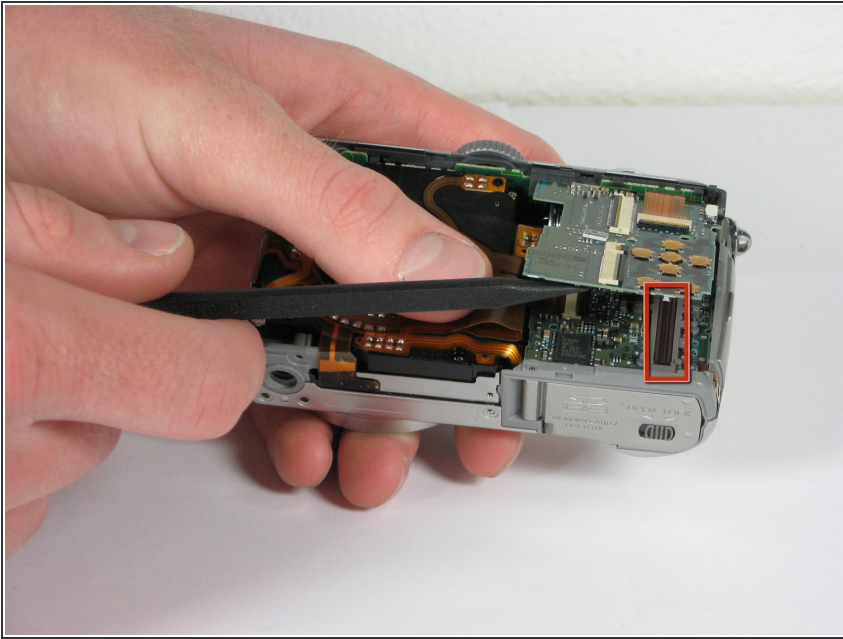
- Remove the back casing from the camera.

Step 8 — button board



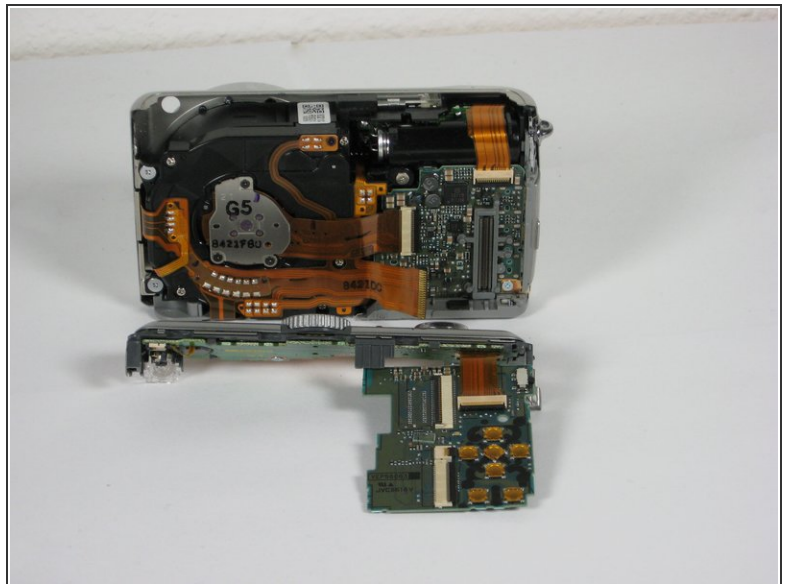
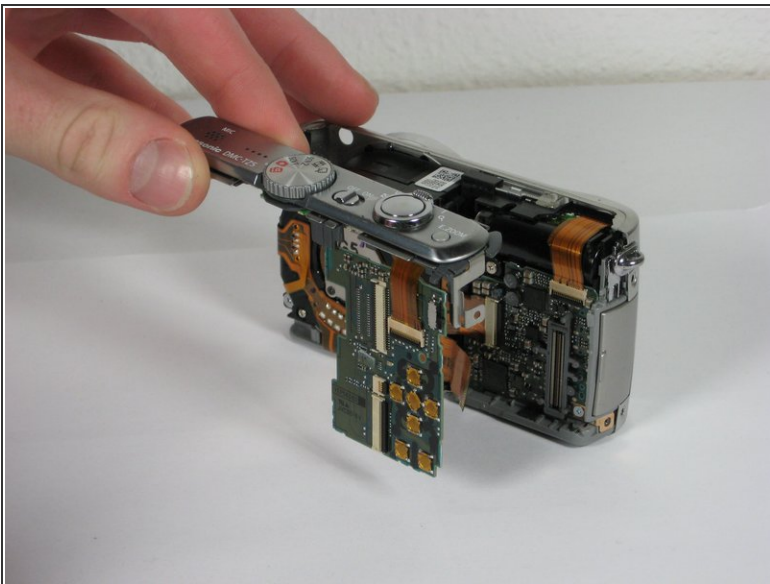
- Use the spudger to remove the ribbon cable connecting the lens casing to the circuit board by lifting up the black clip.
- Carefully remove the function switch cover. This unit snaps on and off.

Step 9



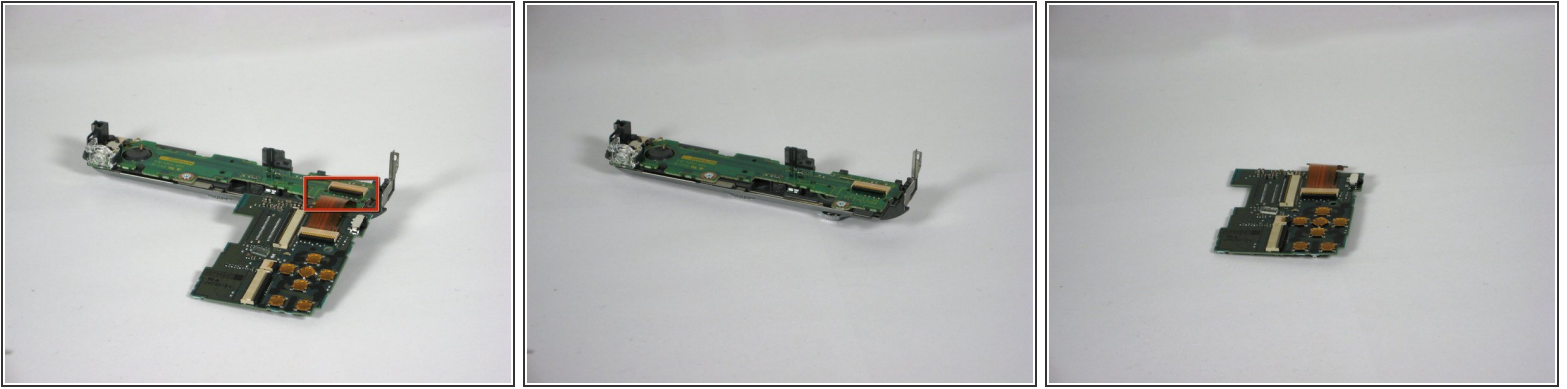
- Carefully unsnap the front logic board from the rear logic board using a spudger.

Step 10



- Slide the entire top part of the camera that is attached to the logic board, horizontally away from the camera.

Step 11



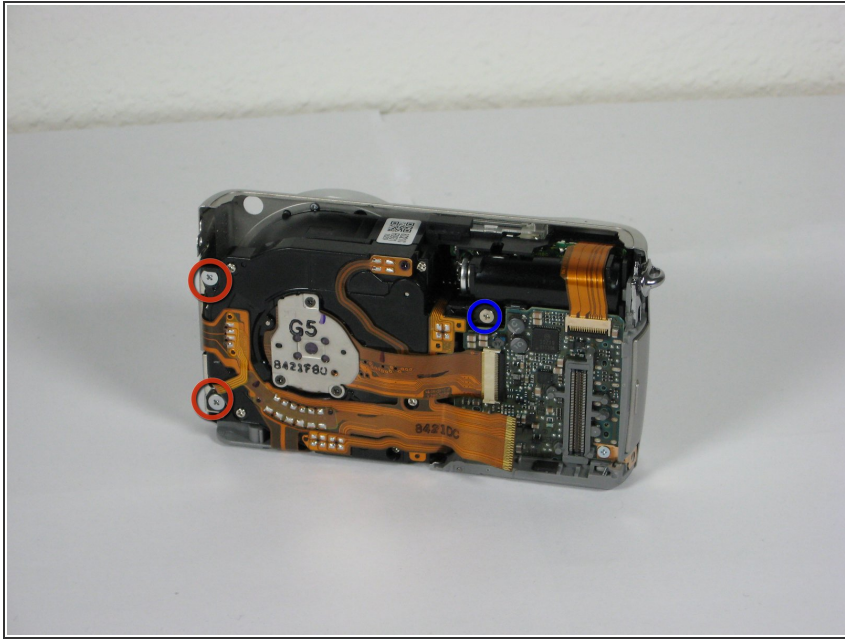
- Remove the ribbon cable from the top connection panel by unlocking the black clip with a spudger.
- This leaves you with the logic board and the top connection panel separate and free from the camera

Step 12 — Camera Lens Assembly



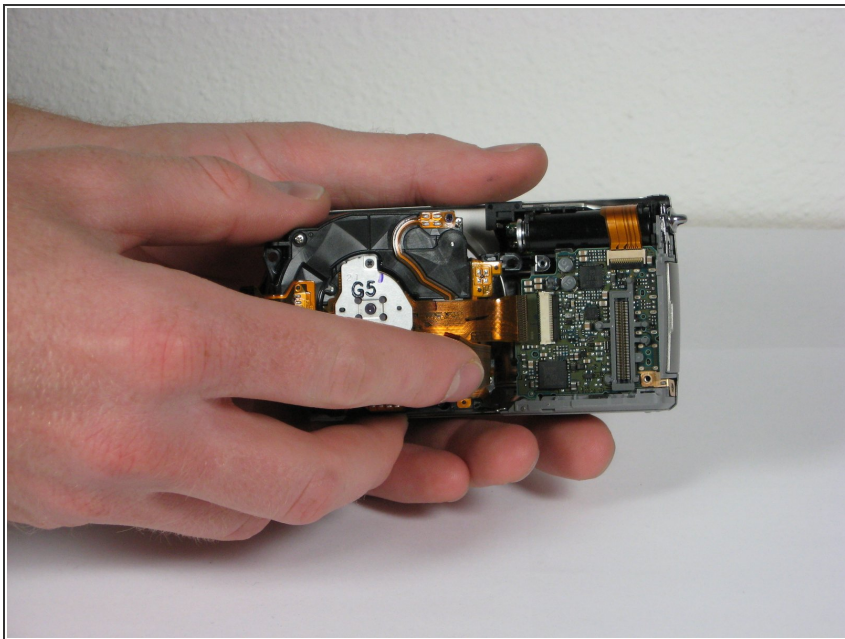
- Use a spudger to detach the ribbon cable from the circuit board. Lift the black clip up to unlock it as before.

Step 13



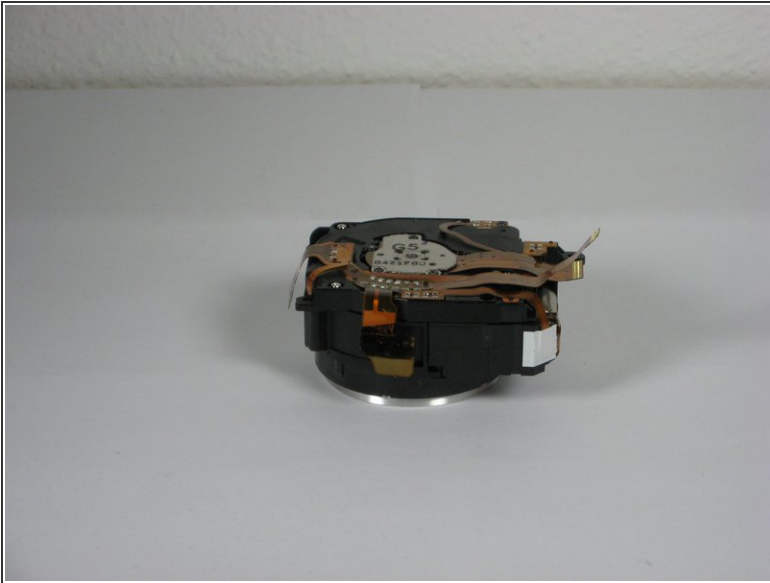
- Remove the 3 screws holding the lens assembly in place.
 - The two screws on the left are 4.5mm with washers.
 - The single screw on the right is 4mm.

Step 14



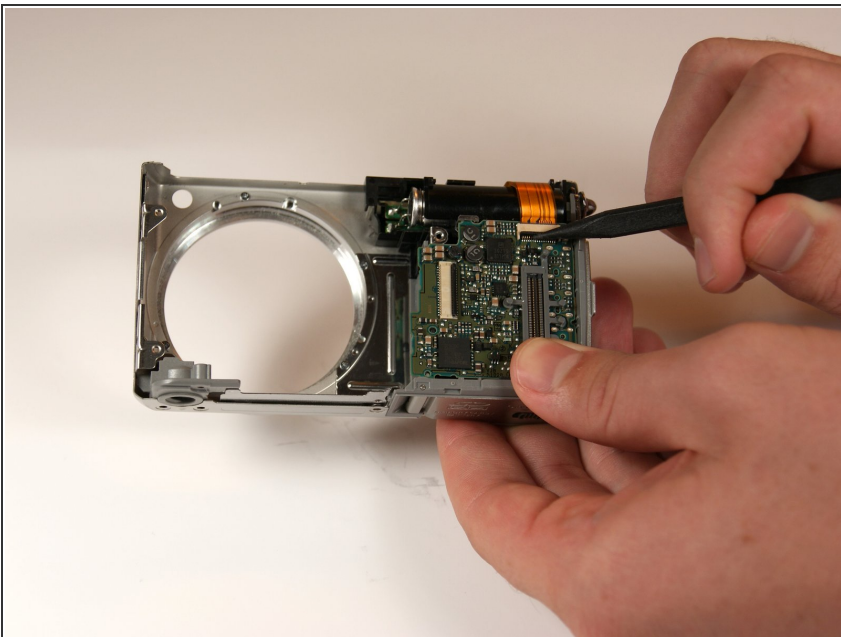
- Push the lens assembly slightly toward the circuit board, and pull the left side out of the casing first. You will have to wiggle this out gently.

Step 15



- Remove the entire assembly out of the casing.
 - The ribbons on the left and bottom of the assembly simply rest on the camera housing.

Step 16 — AV port circuit board



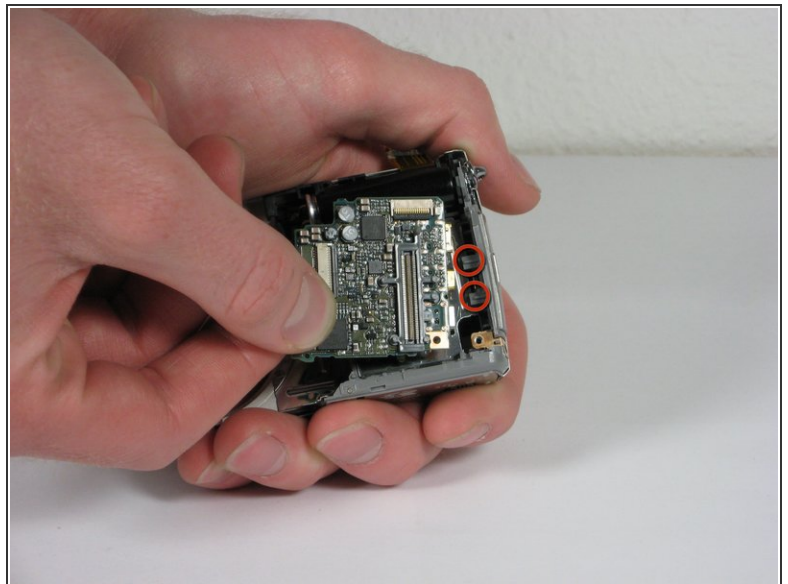
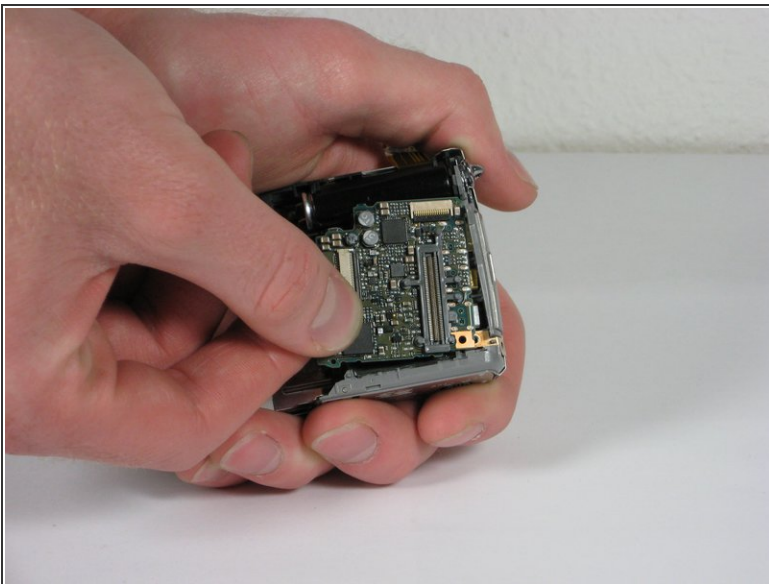
- Use the spudger to unclip the top ribbon cable from the circuit board.

Step 17



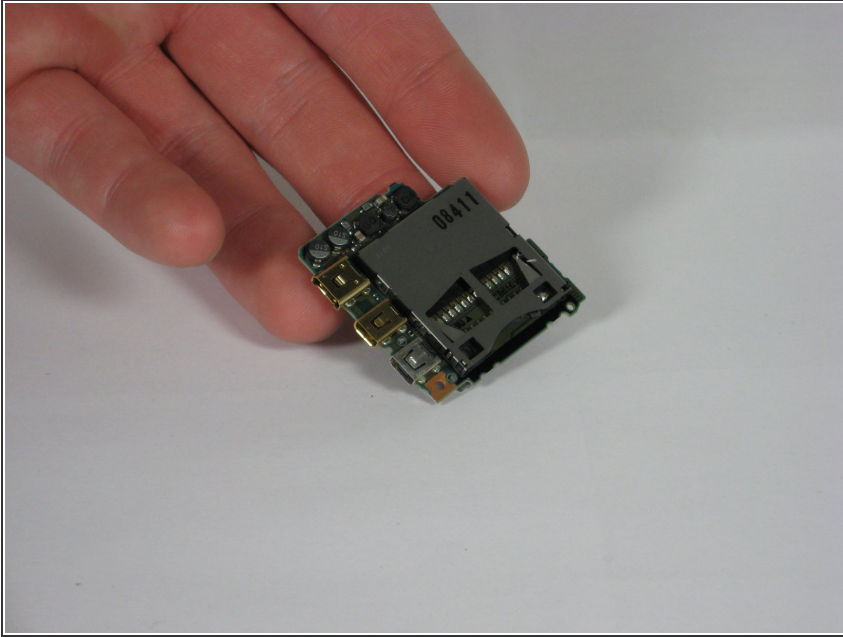
- Remove the single 2mm screw in the bottom right corner of the circuit board

Step 18



- Gently slide the circuit board out away from the port connections. Pull it toward where the lens used to be. Some wiggling may be necessary to remove.
- ⚠ The circuit board is fitted into slots attached to the side of the camera. Do not angle upwards to remove.

Step 19



- Take note of how the slots fit into the circuit board for easy replacement.

To reassemble your device, follow these instructions in reverse order.