



Acer Aspire One ZG5 Speakers Replacement

This guide gives instructions to install new speakers in your Acer Aspire One ZG5.

Written By: Doug Gallatin



INTRODUCTION

This guide will walk you through how to replace the Acer Aspire One ZG5 speakers. The speakers will need to be replaced if you find your computer making no noise.

Speakers are used in computers to generate sound to create audio output for the listeners.

Please power off your device and remove the battery before performing this repair. This guide requires moderate skill.



TOOLS:

- [Phillips #00 Screwdriver](#) (1)
- [Phillips #0 Screwdriver](#) (1)
- [Phillips #1 Screwdriver](#) (1)
- [Spudger](#) (1)



PARTS:

- [Laptop Battery for Acer Aspire ZG5 Series](#) (1)

Step 1 — Battery



- Turn the netbook upside down with the battery at the top, facing away from you.

Step 2



- Unlock the battery by sliding the switch located near the left hinge to the left "unlocked" position.

Step 3



- Slide the latch located on the opposite hinge from the lock while pushing the battery up.

Step 4 — Wireless Card



- Gently loosen the two Phillips #0 screws in the small panel that covers the wireless card.
- ⓘ These screws are built into the panel and aren't meant to be completely removed.

Step 5



- Lift up the panel and remove it from the case.

Step 6



- Disconnect the two antenna cables from the left side of the wireless card.

Step 7



- Remove the single 3.9 mm Phillips #1 screw from the bottom left of the wireless card.

Step 8



- Gently lift up the left side of the wireless card and slide the card out of its socket.

Step 9 — Keyboard



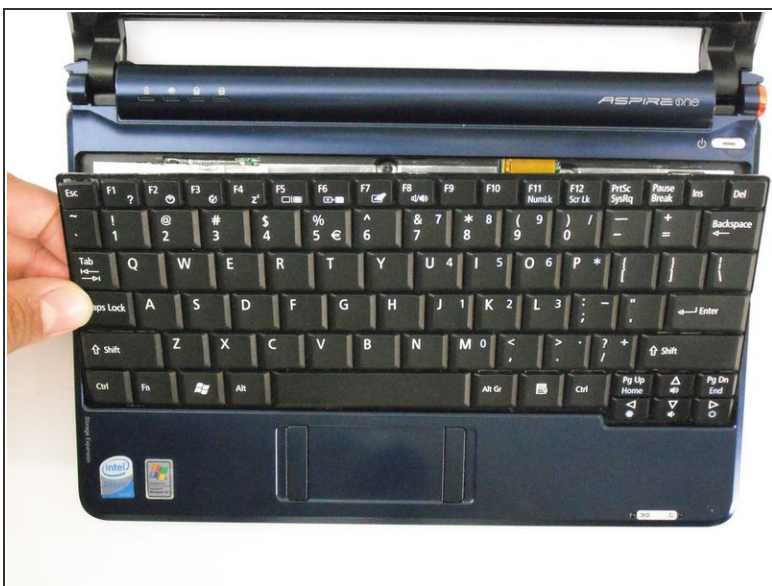
- Turn the netbook over and open the display so that the keyboard is facing you.

Step 10



- There are three tabs located on the top of the keyboard.
- Start with the spudger pointing towards the display and pry up to push each tab off the keyboard.
- As you move to the next tab, ensure the previous tab doesn't reset itself.

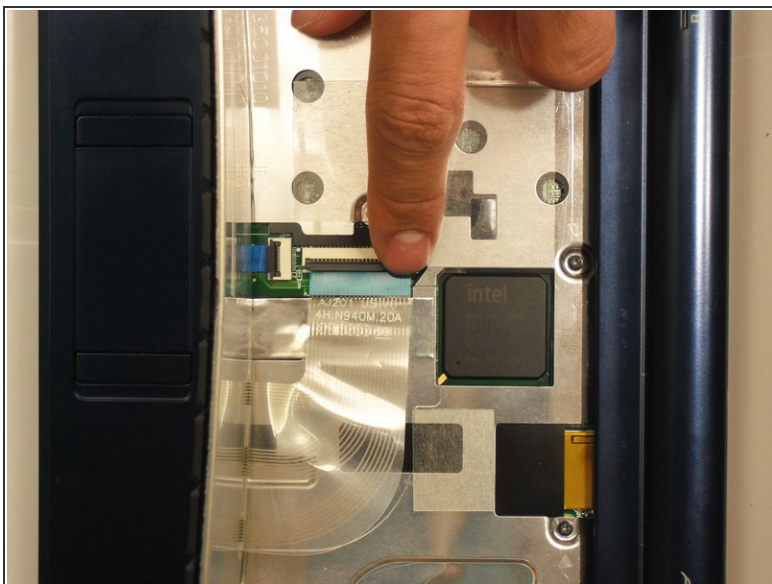
Step 11



- Lift top of keyboard up. If it doesn't lift easily, there may be tabs on the sides - use the tool to ease them aside and/or shift the keyboard from side to side.

⚠ There is a short ribbon cable connecting the keyboard to the netbook.

Step 12



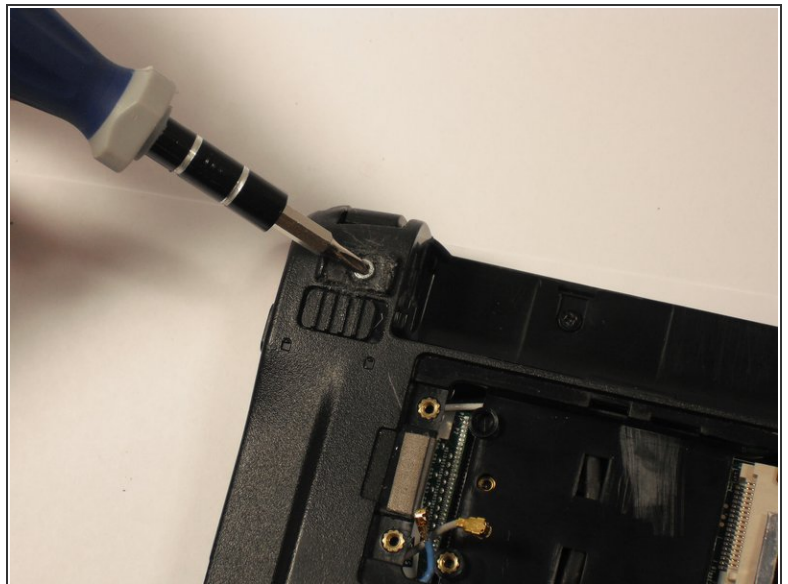
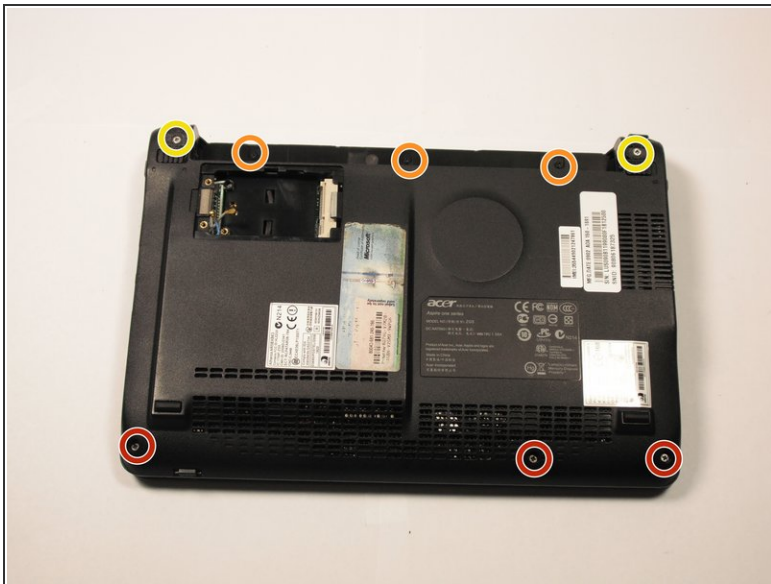
- Disconnect the ribbon by lifting the black plastic hinge and removing the clear blue cable.

Step 13 — Top Case



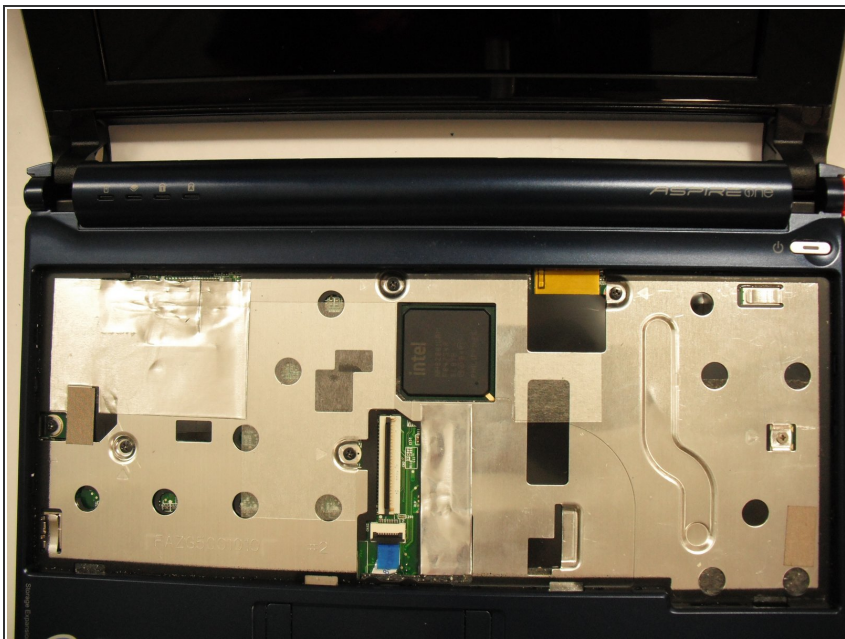
- Close the display and turn the ZG5 over so that the battery compartment faces away from you.

Step 14



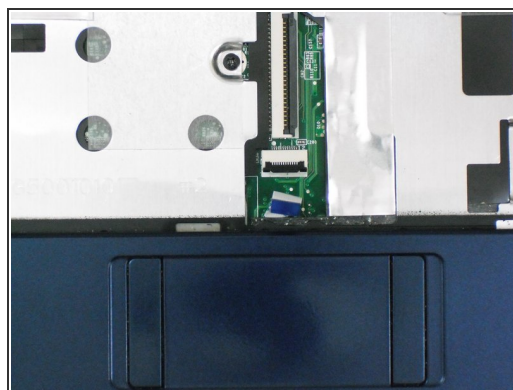
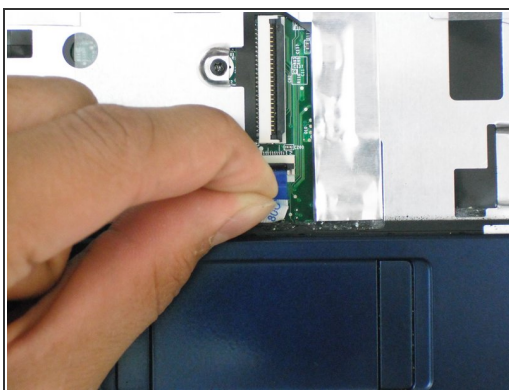
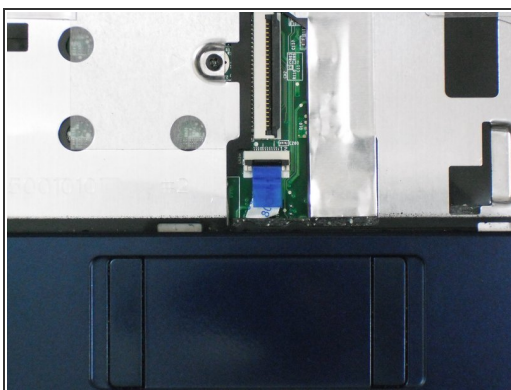
- Remove three 5.8 mm Phillips #0 screws from the bottom of the case
- Remove three 3.9 mm Phillips #1 screws from the battery compartment.
- Remove two 5.8 mm Phillips #0 screws from underneath the feet near the hinges.

Step 15



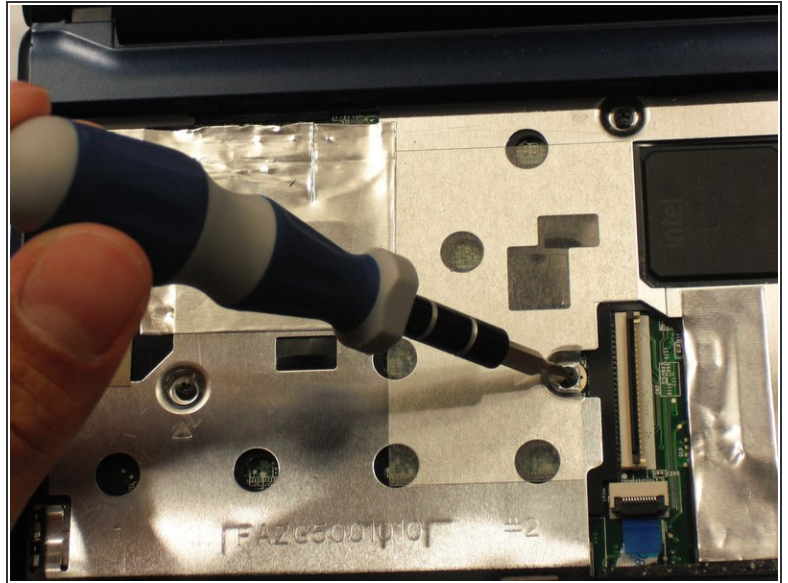
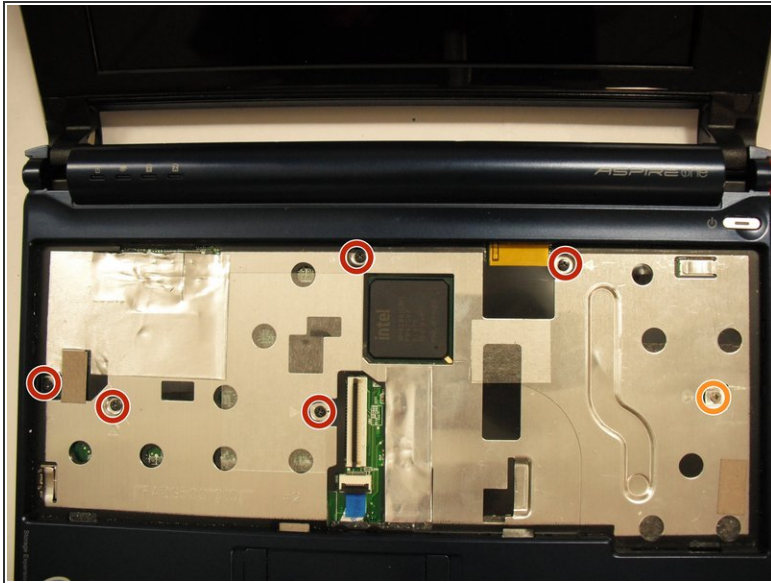
- Turn the netbook back over and open the display with the keyboard cavity facing you.

Step 16



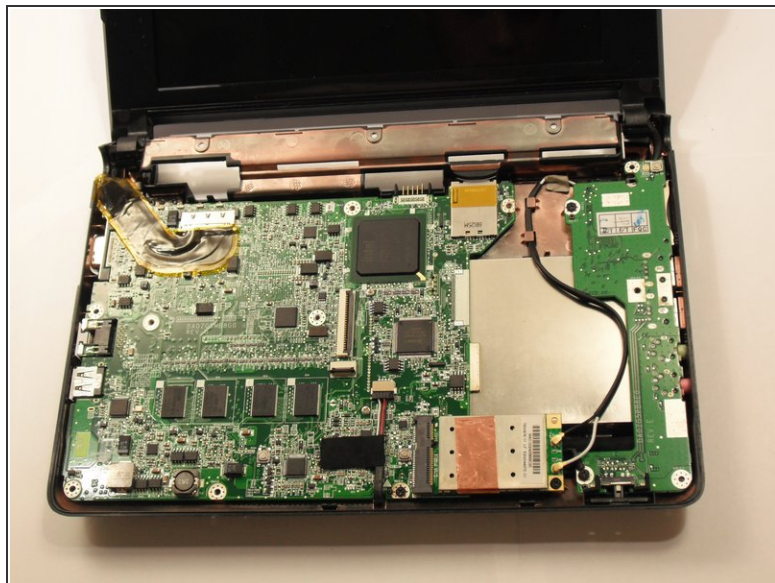
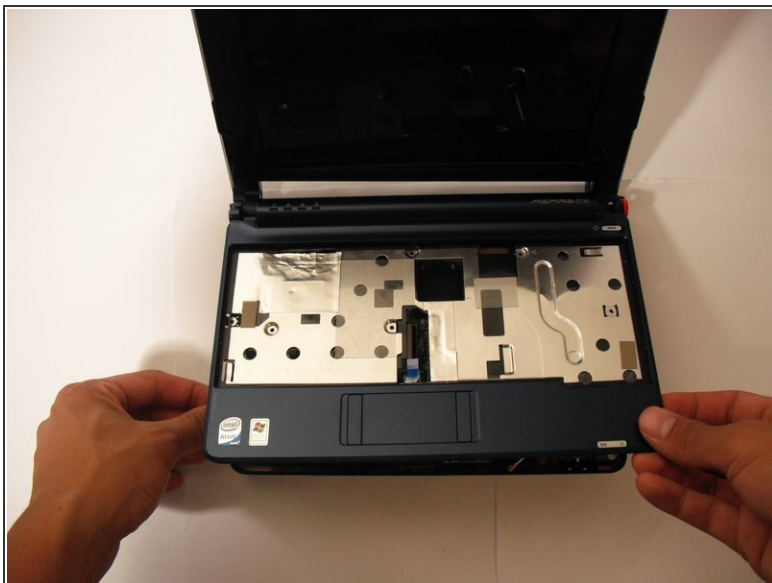
- Flip up the retaining flap on the trackpad ribbon cable ZIF connector.
- Using the blue tab, pull the trackpad ribbon cable from its socket on the motherboard.

Step 17



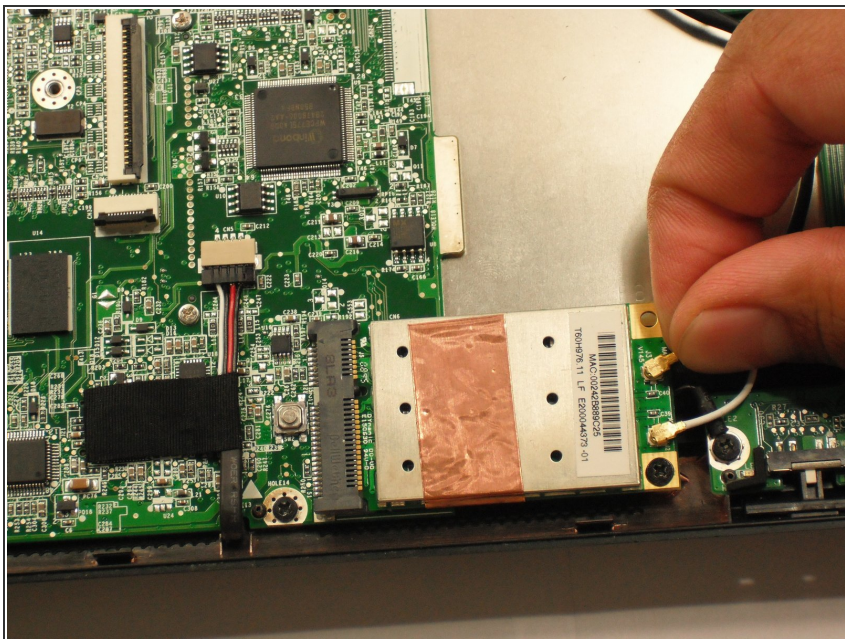
- Remove the five black 4.7 mm Phillips #0 screws from the metal casing.
- Remove the single silver 4.3 mm Phillips #00 screw from the right side of the metal casing.

Step 18



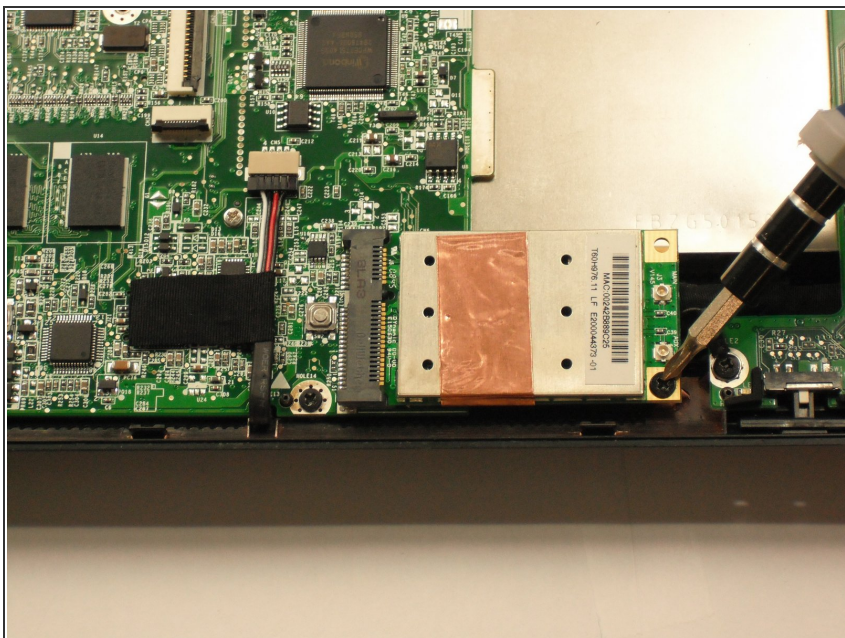
- Starting at the red rings along the hinge, insert a spudger or plastic opening tool into the seam between the two halves of the case.
- Slide the spudger toward the front of the device, releasing the small clips that hold down the top case.
- Gently lift off the top case.

Step 19 — Internal Wireless Card



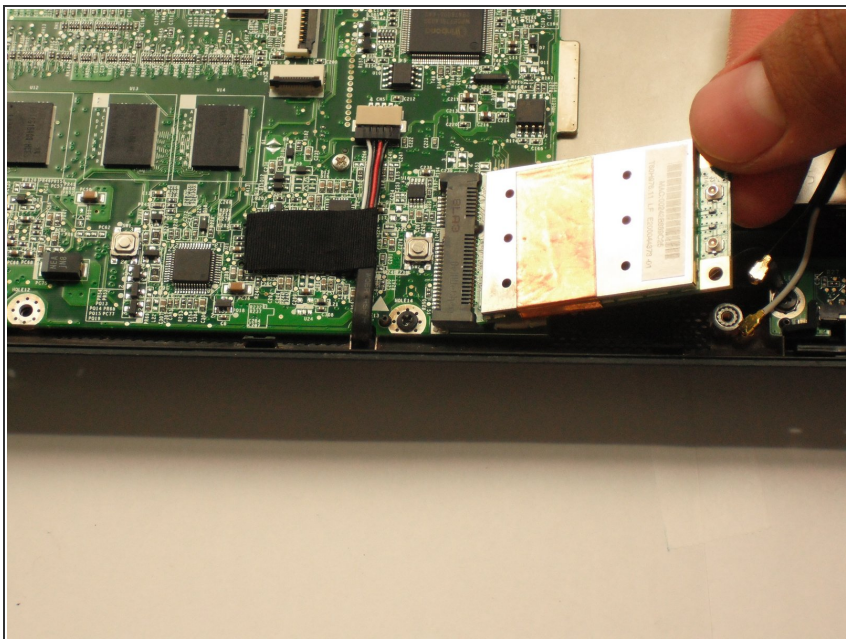
- Disconnect the two antenna cables from the right side of the wireless card.

Step 20



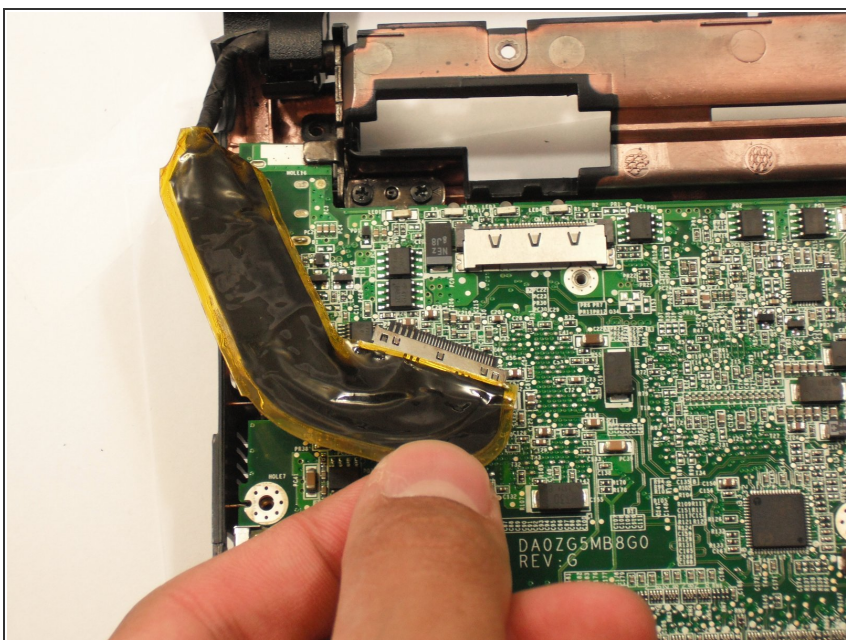
- Remove the single 3.9 mm Phillips #1 screw from the wireless card.

Step 21



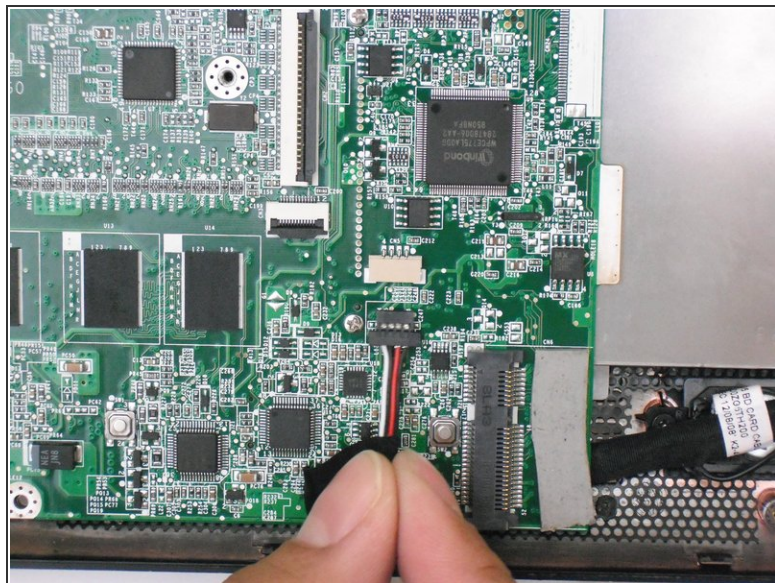
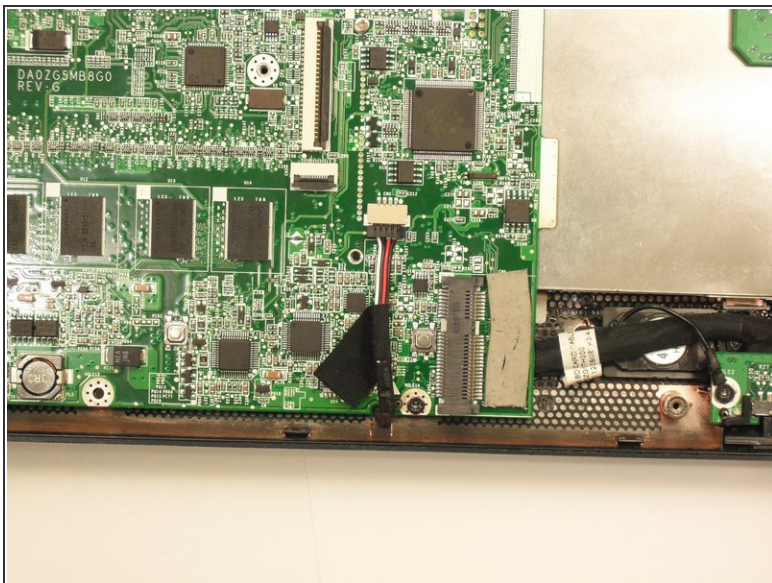
- Gently pull the wireless card to the right and slide it out of its socket.

Step 22 — Motherboard



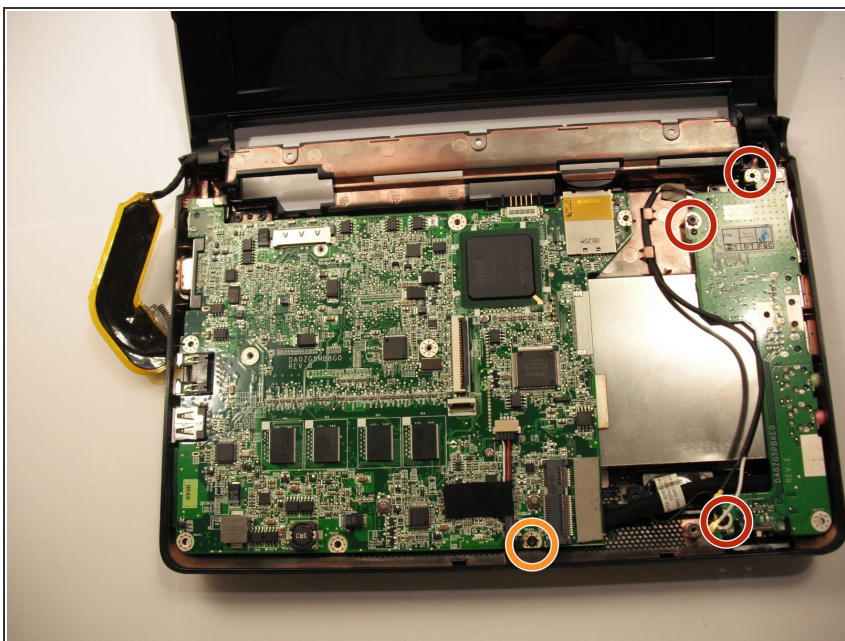
- Disconnect the display cable from the top left of the motherboard.

Step 23



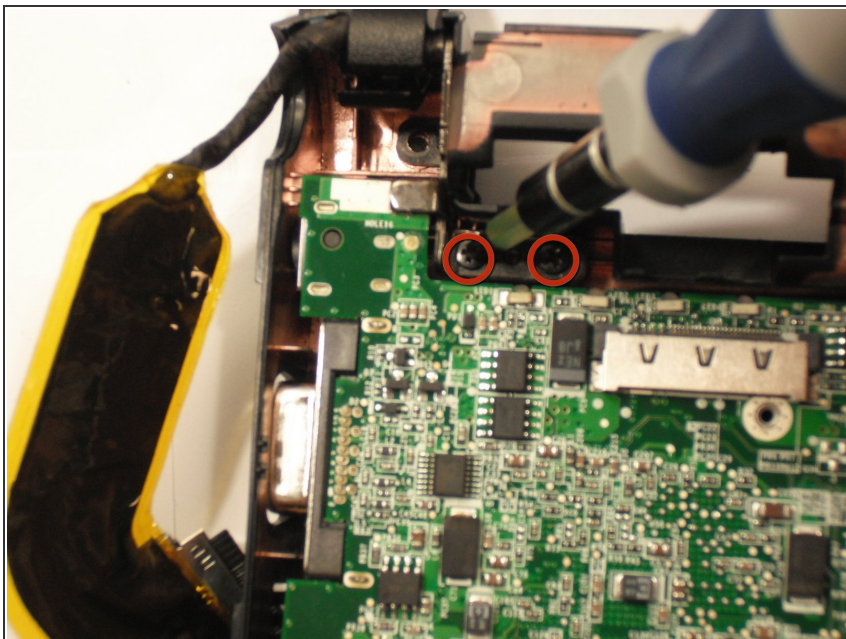
- Disconnect the speaker cable from its socket on the motherboard.

Step 24



- Remove three 3.9 mm Phillips #1 screws from the small I/O board.
- Remove a single 3.9 mm Phillips #0 screw from the front of the motherboard.
- ⓘ Some laptops may instead have a single 4.7 mm Phillips #0 screw.

Step 25



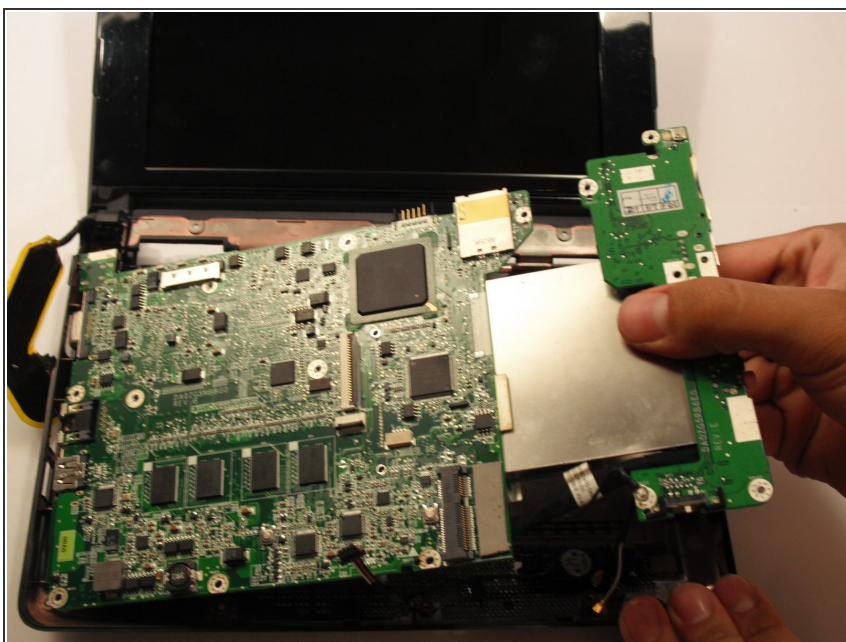
- Remove the two 4.7 mm Phillips #1 screws that connect the display to the motherboard.

Step 26



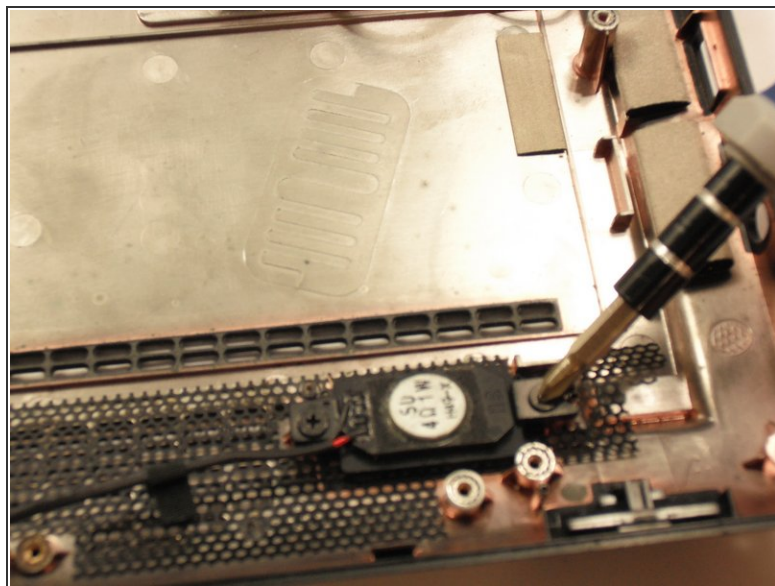
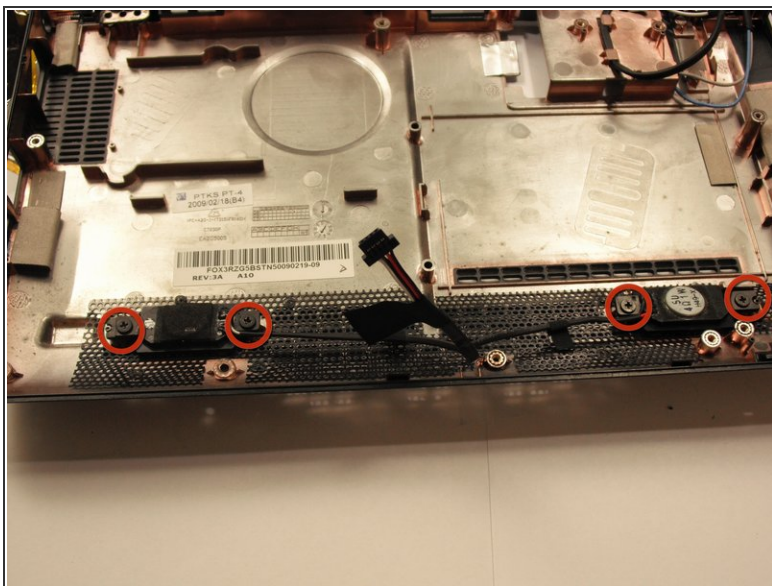
- Gently lift the I/O board up from the right side of the case.
- ⓘ The I/O board is attached to the motherboard by a short cable.

Step 27



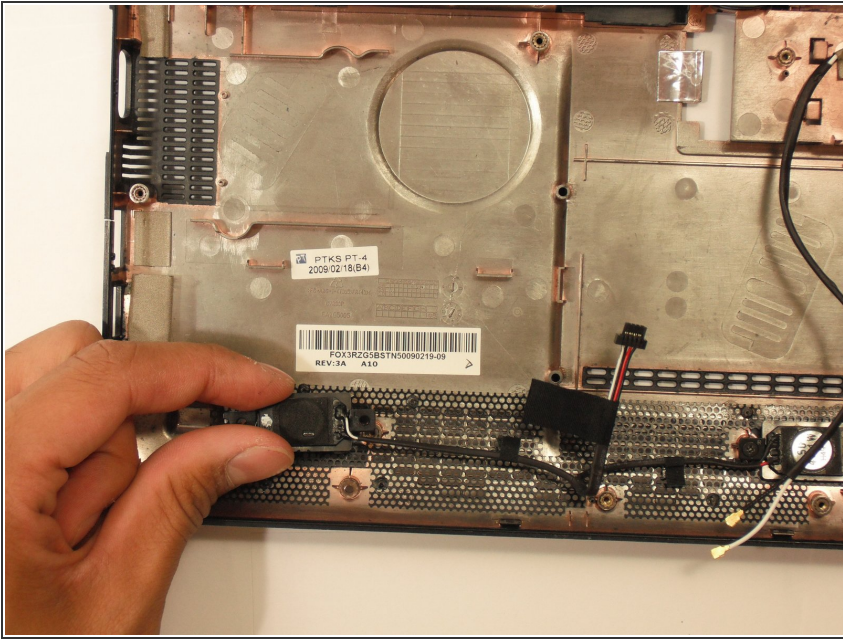
- Lift the entire motherboard assembly out the case.

Step 28 — Speakers



- Remove the four 3.9mm screws.

Step 29



- Pull the speakers gently away from the case or they may be damaged.

To reassemble your device, follow these instructions in reverse order.