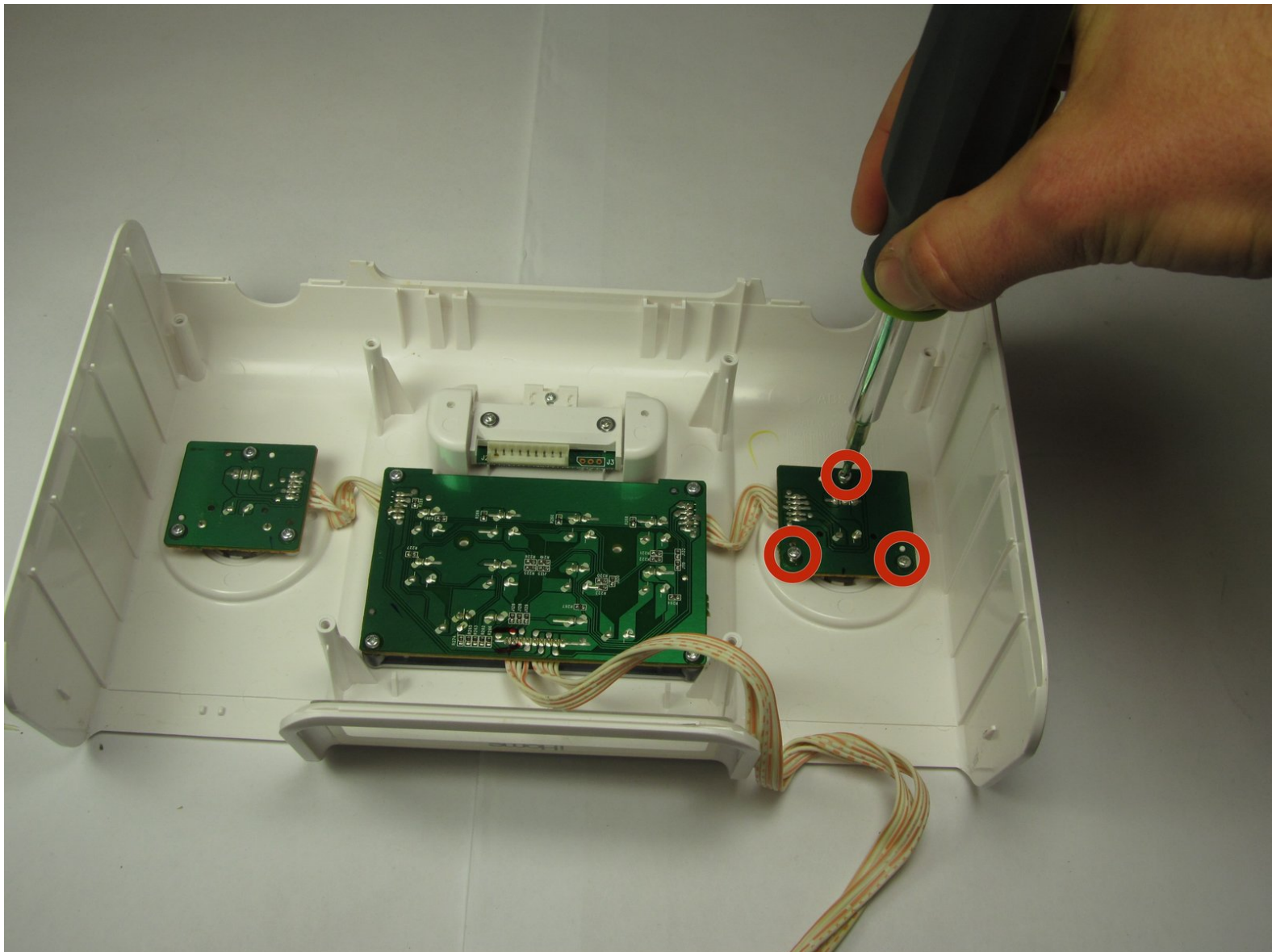




# iHome iH9 Volume/Tuning Dials Replacement

This guide will show you how to replace the volume or tuning dial.

Written By: Samantha



## INTRODUCTION

Is your device's dial sticking or not rotating at all? Access either the tuning or volume dial located on the top of the iHome iH9 using this guide. From there, you can clean the dials or replace them if they are broken.

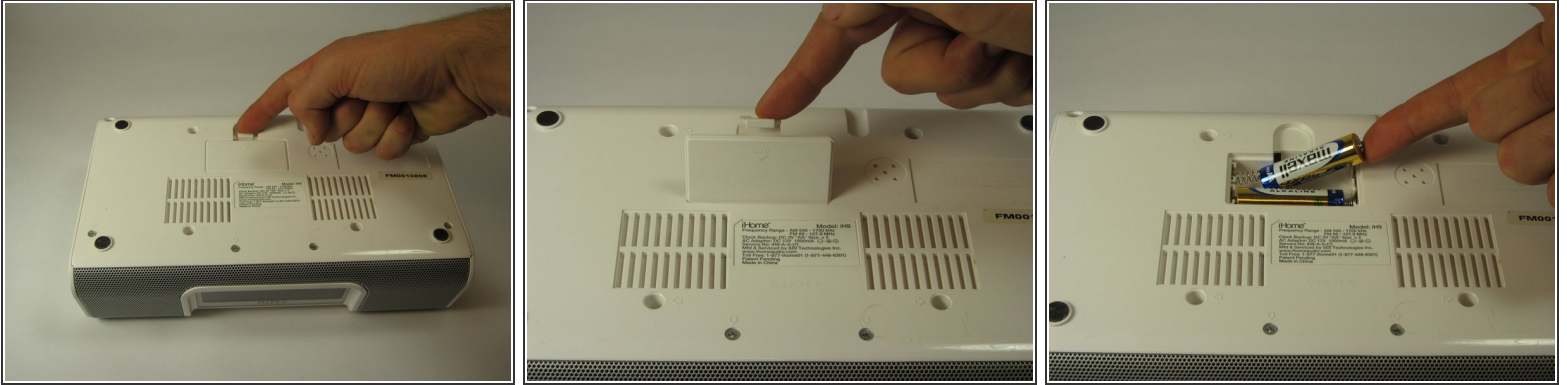
It is best to do this on a flat surface with plenty of space. This replacement involves removing many screws, so keep track of them to ensure easy reassembly. You can organize the screws by placing them on a magnetic pad immediately upon removal.



### TOOLS:

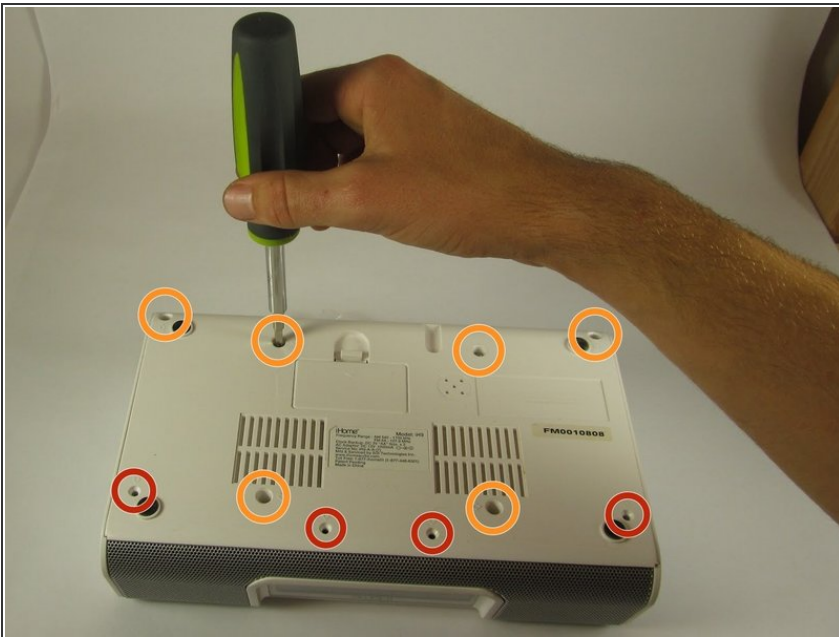
- [Phillips #2 Screwdriver](#) (1)
  - [iFixit Opening Tools](#) (1)
  - [Flush Cutter](#) (1)
  - [Phillips #0 Screwdriver](#) (1)
-

## Step 1 — Backup Batteries



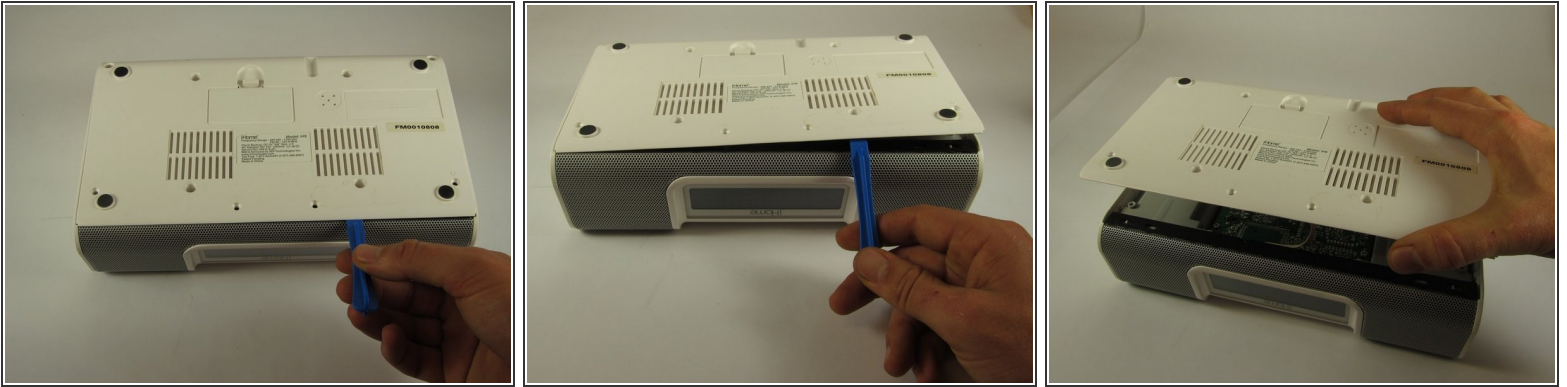
- Pull the tab towards you and lift up to remove the battery cover.
- Remove the two AA batteries.

## Step 2 — Opening the iHome iH9




- Unscrew the four 8mm Phillips #2 screws.
- Unscrew the six 25mm Phillips #2 screws.
- Reinstall the backup battery cover so it is out of the way.

## Step 3

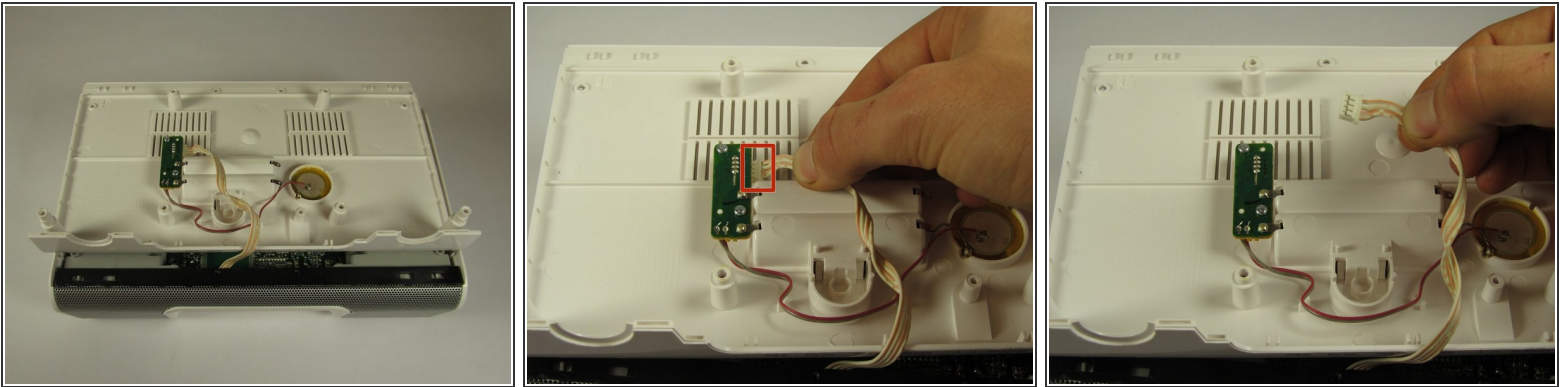


- Pry the backplate up with a plastic opening tool between the back plate and the speaker grill.

 Be careful when lifting the bottom plate up; there is a short white and orange 4-pin connector attached to its underside.

- Lift the bottom plate up while making sure the connector remains attached.

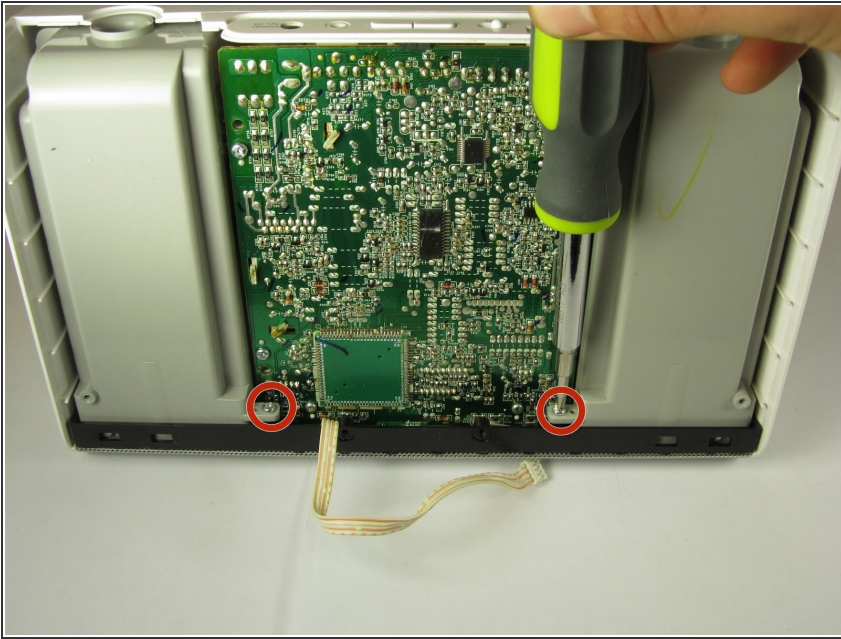
## Step 4



- Use your hands to flip the backing plate away from you and rest it upside down on the iH9.
- Unplug the white and orange 4-pin connector by pulling it in the direction of the wires.
- Set the backing plate aside.

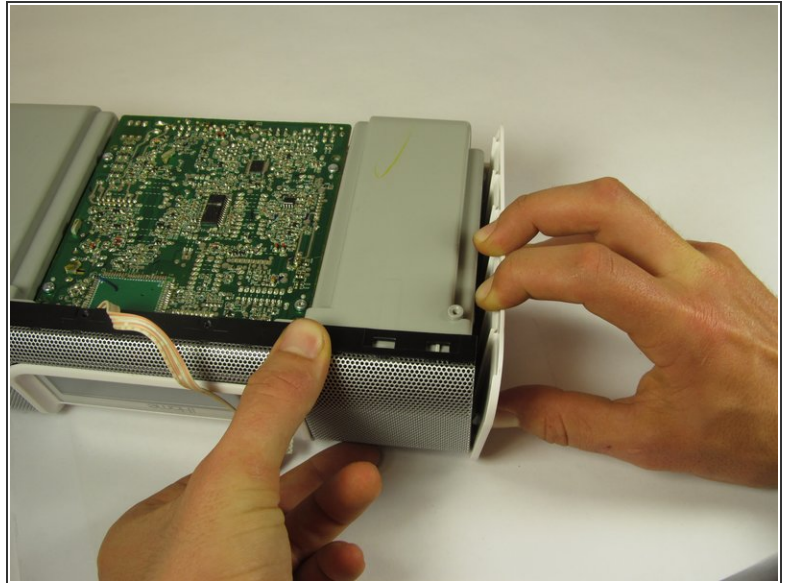
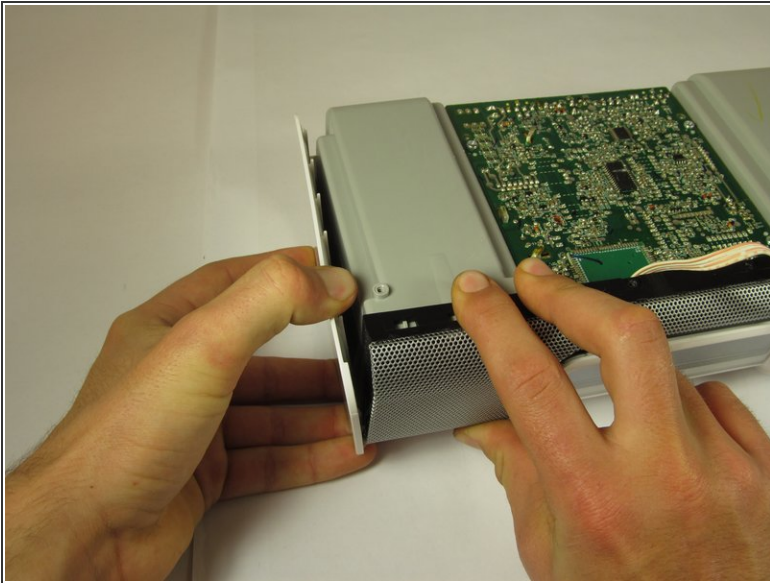


## Step 5



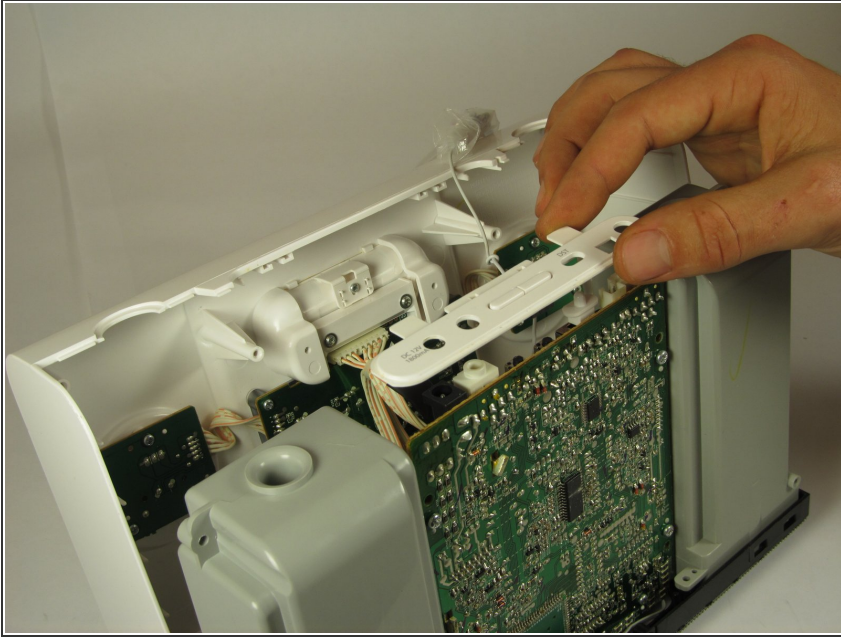
- Place the device so that the speaker grill is face down.
- Remove the two 10mm Phillips #2 screws on interior sides of the speaker housings.

## Step 6



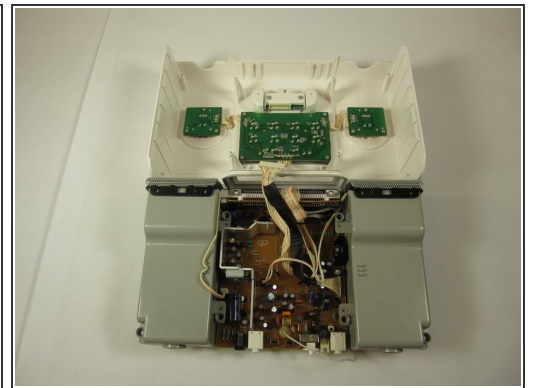
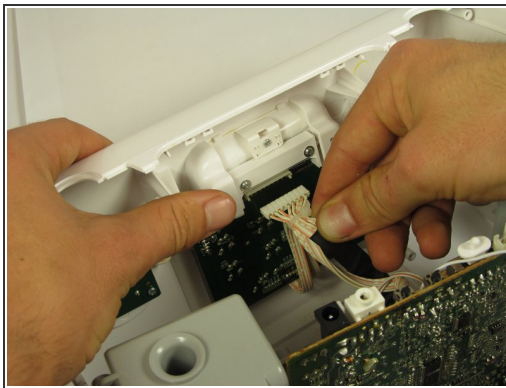
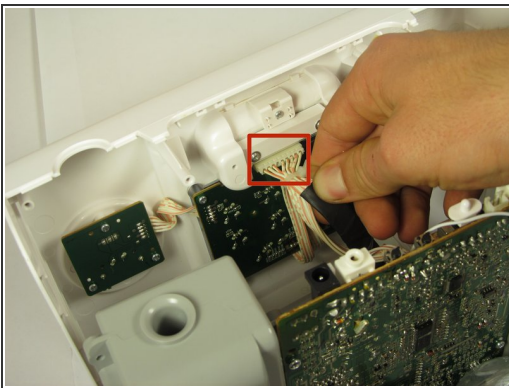
- Place the iH9 upside down.
- ⚠ Wires connect the core assembly to the housing; do not attempt to pull the core assembly completely out.
- Using both hands, pull the housing siding away from the device while simultaneously lifting the motherboard and speaker assembly straight up.
- Repeat for the other side.

## Step 7



- Stand the iH9 on its grill.
- Separate the motherboard and speaker assembly by rocking it back and forth and pulling the assembly towards you.
- Remove the small back panel.

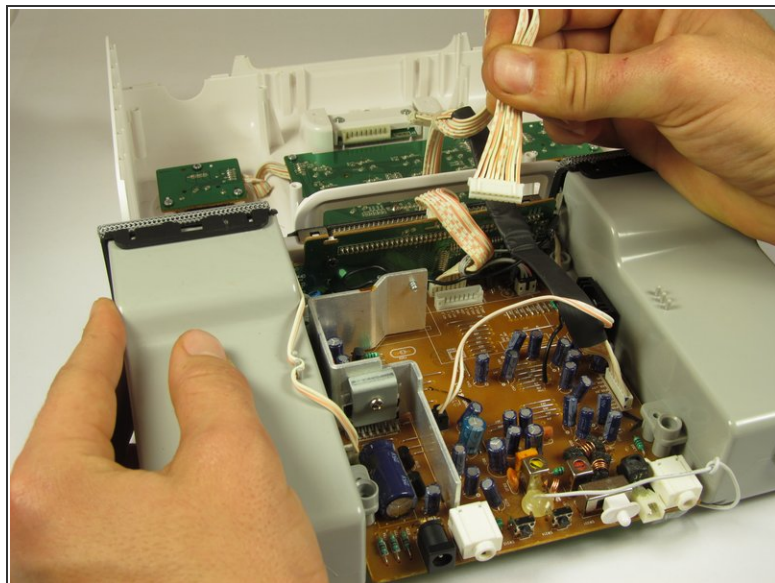
## Step 8



- Firmly pull the wide 9-pin connector with black covering on the underside of the upper housing to unplug it.
- Lay the housing and core assembly flat and close to each one another.

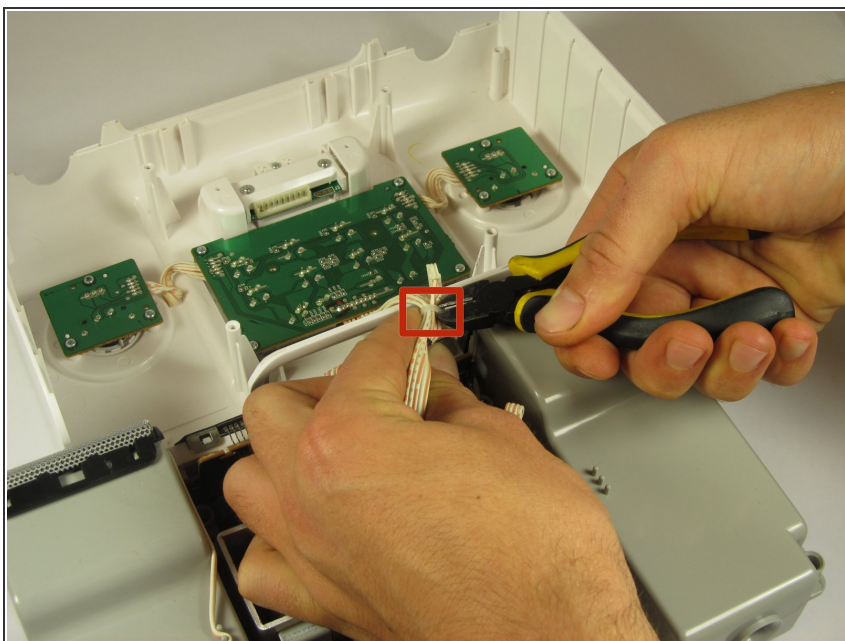


## Step 9



- Unplug the narrow 9-pin connector from the motherboard.

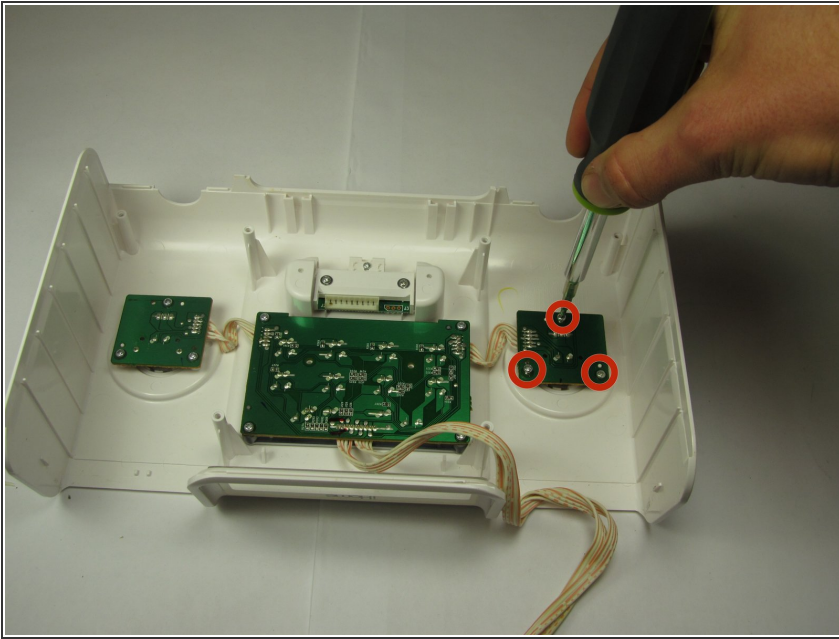
## Step 10



- Cut the zip tie holding the wires together with a wire cutter. The two sides of the device housing are now fully separated.

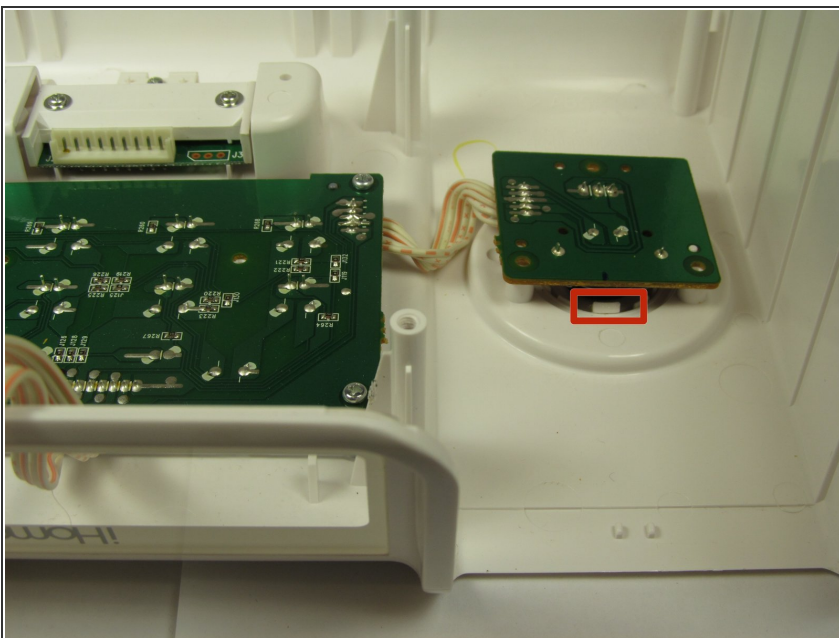


## Step 11 — Volume/Tuning Dials



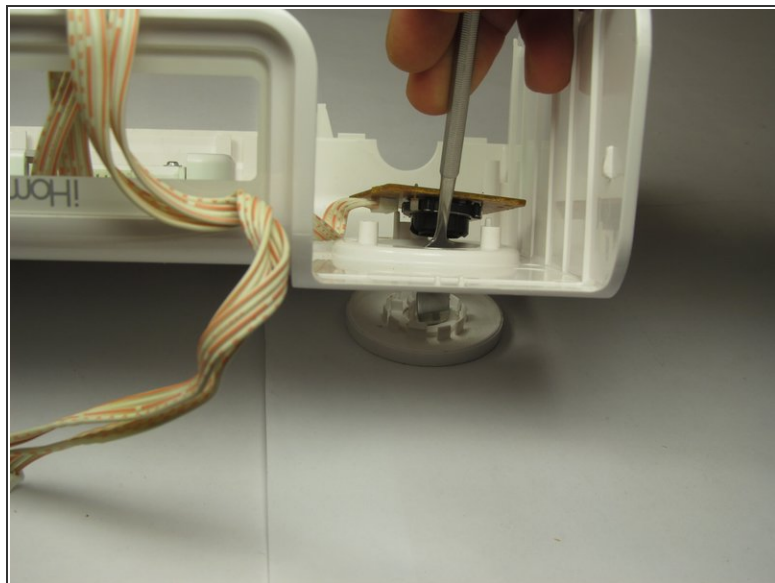
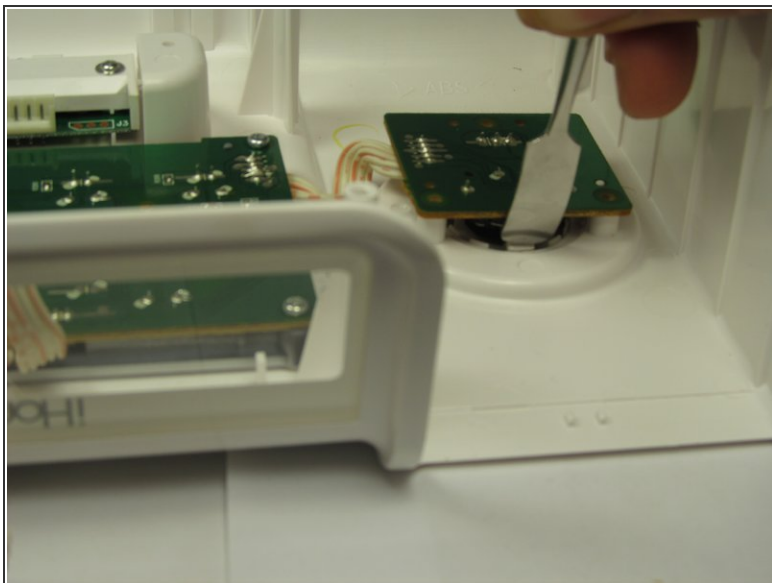
- Take the top cover off and flip it so the buttons are face down.
- Remove the three 8mm Phillips #0 screws on the back of the dial circuit board.

## Step 12



- Use one hand to tilt the front edge of the cover up.
  - Use the other hand to rotate the dial from underneath until you see one of larger tabs on the back side of the dial.
- i** There are two large tabs which are located on opposite sides of the dial, between the circuit board and the cover.

## Step 13



- Use the nylon or metal spudger tool to push one of these larger tabs inward.
- After pressing tab inward, forcefully push down on back of dial.
- ⓘ Pushing down will pop the whole circuit board, button, and dial assembly apart.

To reassemble your device, follow these instructions in reverse order.