



TI-Nspire CX Battery Replacement

Learn how to replace the battery in a TI-Nspire CX.

Written By: Jim Kerman



INTRODUCTION

If your TI-Nspire CX calculator isn't powering on after being charged, or appears to need charged more often or for longer than usual, you may need to replace the battery. Use this guide to replace the calculator's internal rechargeable battery.

The rechargeable battery may become damaged or faulty with repeated use and charging cycles. A faulty battery will store less energy or no energy at all.

Step 3 requires you to disconnect and remove the old battery. Before removing the old battery, inspect it for damage such as leaking or appearing puffy. Damaged batteries are a fire hazard. If the battery appears damaged, you must [take appropriate precautions](#).

Before using this guide, be sure to power off the calculator completely.



TOOLS:

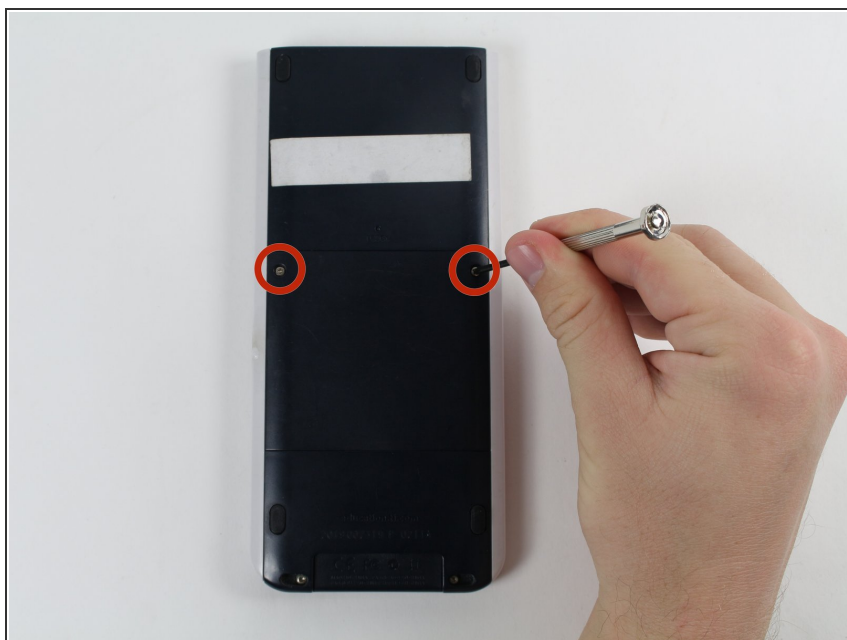
- [Phillips #0 Screwdriver](#) (1)
- [Spudger](#) (1)



PARTS:

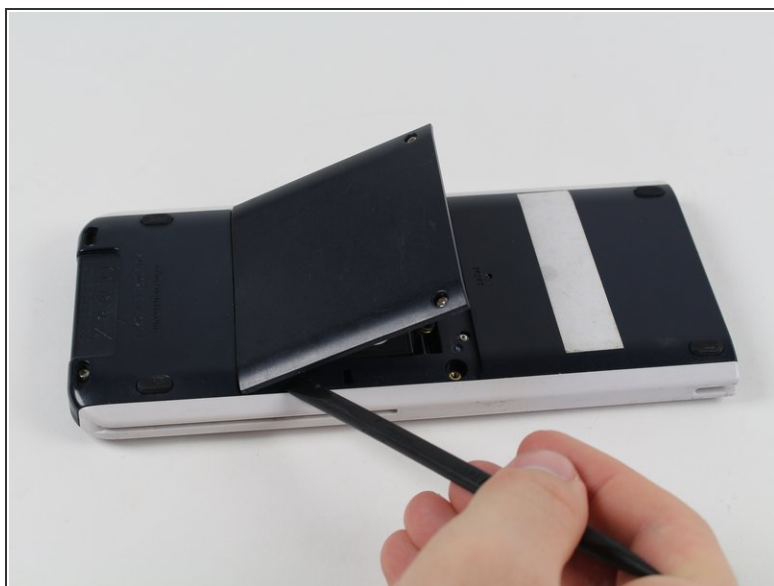
- [TI-Nspire Rechargeable Battery](#) (1)

Step 1 — Battery



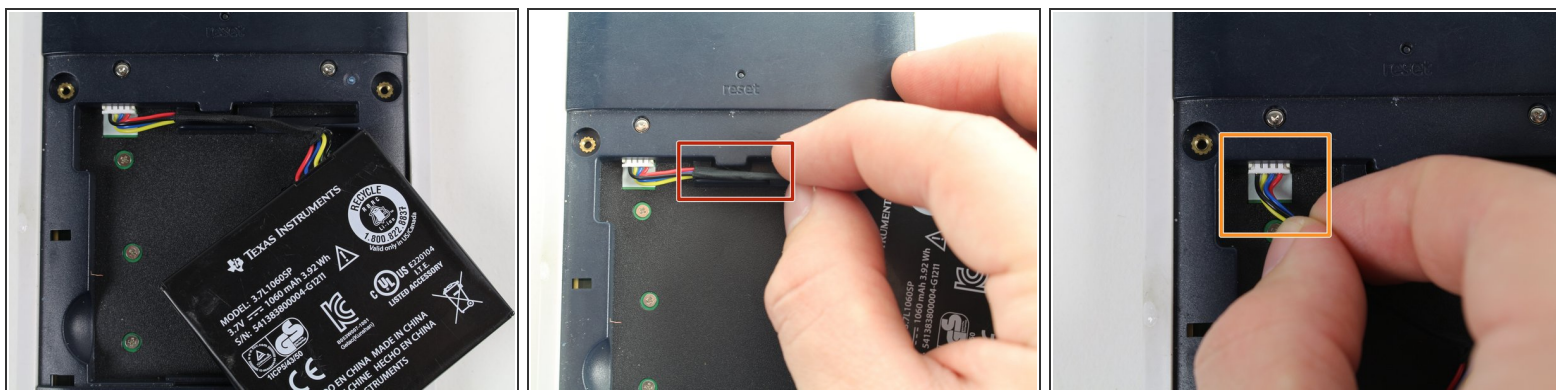
- Use a Phillips #0 screwdriver to loosen the captive screws on the back plate of the calculator.
- ⓘ The screws do not come all the way out. Simply twist them until you are able to remove the back plate.

Step 2



- Remove the back plate using the spudger or by hand.

Step 3



- Carefully disconnect and remove the old battery.
- Unhook the wire from the tab.
- Carefully pull out the connector.
- ① Grip the wire close to the top and pull away.

Step 4



- Plug in the new battery.
- ☑ Make sure to put the wire back in the same way. You should see 4 metal connections on top

Step 5



- Position the new battery and tuck the wire under the tab.

Step 6



- Replace the back plate and the 2 screws.

Now charge your calculator and power it up. If replacing the battery does not solve your problem, it may be a problem with your charging cord or the internal sockets.

