



Speaker Bose SoundDock Motherboard Replacement

Do you enjoy great sounds, but can't connect...

Written By: Dalton Alexandre



INTRODUCTION

Do you enjoy great sounds, but can't connect your iPod to your dock? Replace your motherboard with this easy-to-use guide. Clear some space though, you'll have a few small parts you don't want to lose.



TOOLS:

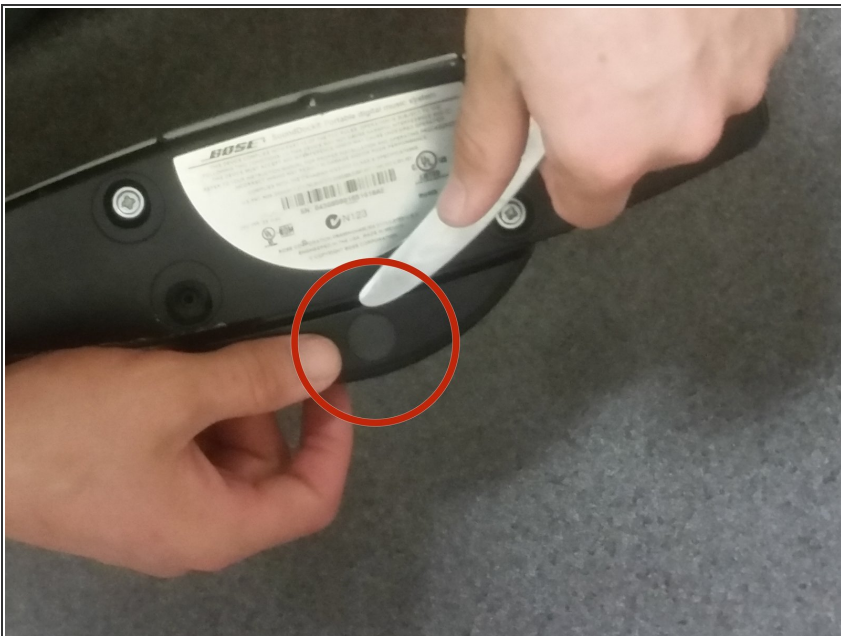
- [Phillips #2 Screwdriver](#) (1)
 - [1.5 mm Flathead Screwdriver](#) (1)
 - [iFixit Opening Tool](#) (1)
-

Step 1 — Bose SoundDock Motherboard



- Remove the battery by pressing your finger down on the center button and twisting it counter-clockwise.
- Remove battery and set it aside.

Step 2



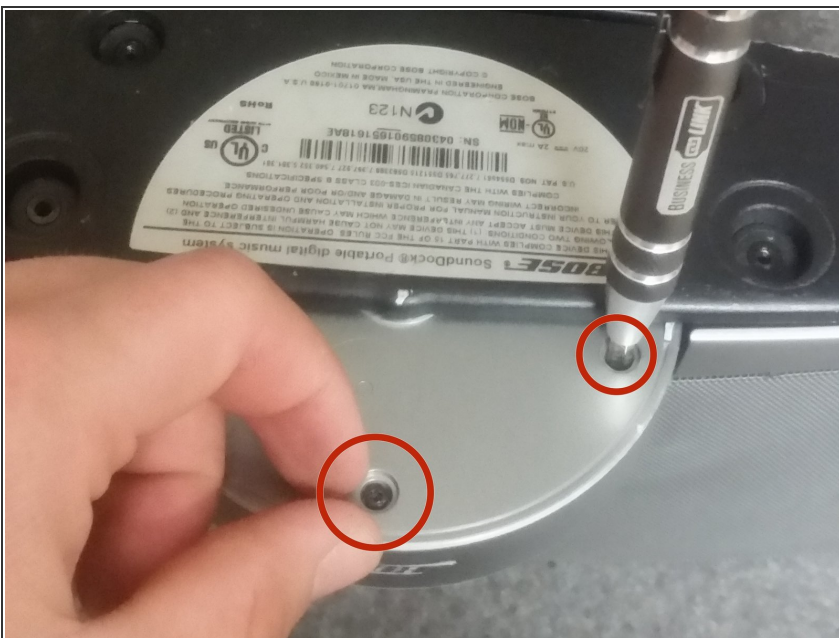
- Use a plastic scraper to remove the rubber gasket from the bottom of speaker system and set it aside.

Step 3



- Use a standard sized Phillips Screwdriver to remove the four screws on the bottom of the speaker system.

Step 4



- Using a smaller flat head screw driver, unscrew the semi-circle plate from bottom to expose the motherboard.

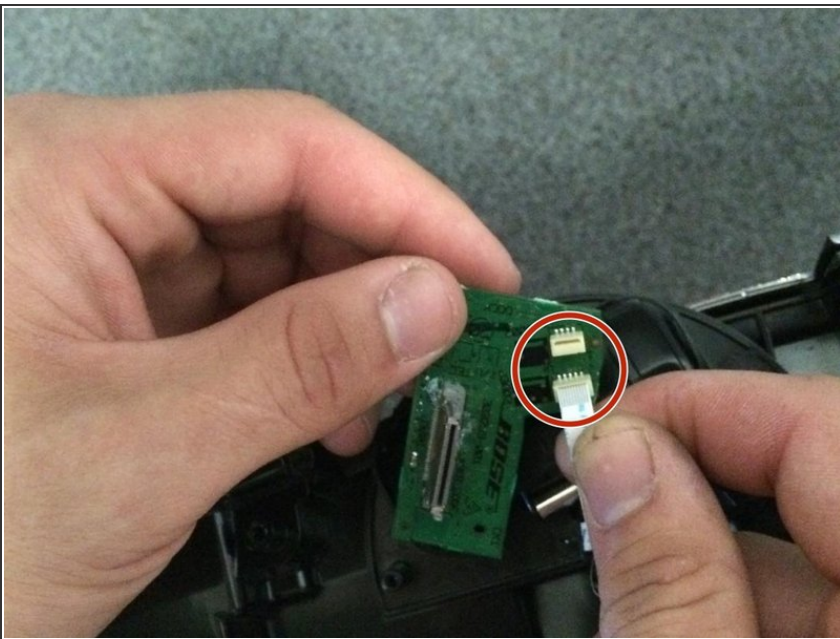
⚠ Once the components are unscrewed, the plastic dock frame may fall out.

Step 5



- Gently pull both ribbon cables out of the motherboard.

Step 6



- Replace it with new motherboard by plugging in the thinner wire into the small slot, and the larger wire into the wider slot.
- Reverse steps 1 through 4 to reassemble dock.

To reassemble your device, follow these instructions in reverse order.