



Written By: Mitchell Zehr



INTRODUCTION

Is the CD drive on your desktop computer not working? Use this guide to replace the malfunctioning CD drive in eight easy steps.



TOOLS:

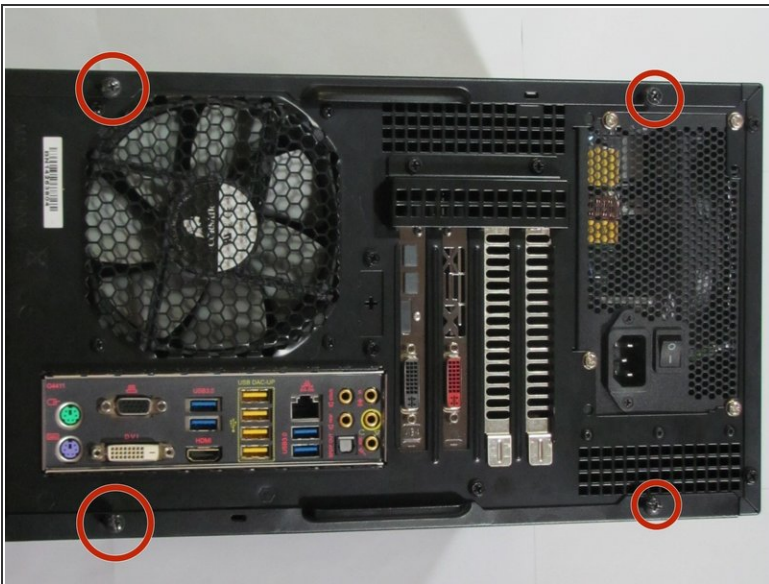
- [Screwdriver](#) (1)
-

Step 1 — Optical Drive



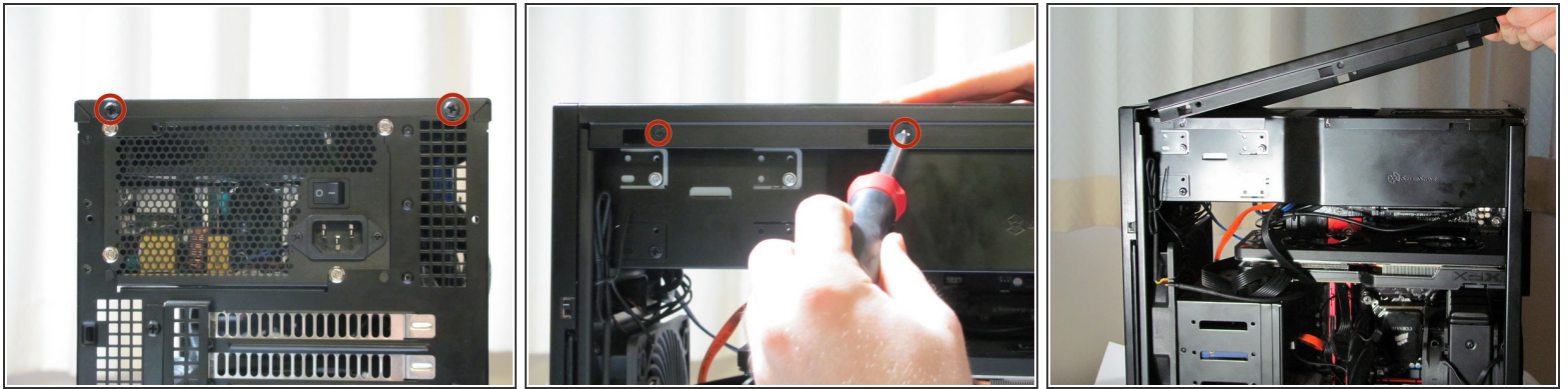
- Find a large table or flat non-carpeted space to work.
 - Unplug all external cables, including the power cable, from your computer.
- ⚠ Touch a metal piece of your computer case in order to release any built up static electricity. Make sure to do this frequently throughout the replacement.

Step 2



- Find the screws that are holding together the side of your computer case and unscrew them.
- Slide the side panel of the computer case toward the back of the case and remove it.
- Repeat for second panel.

Step 3



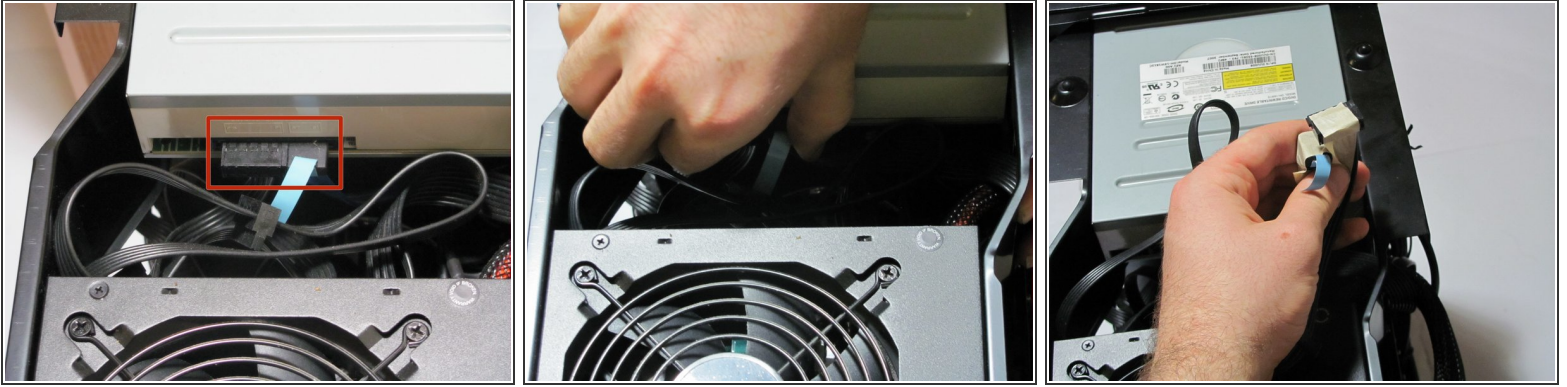
- Depending on the case, It may be necessary to remove the top panel in order to get to the CD drive. If you can access the drive without removing the top, skip this step.
- On the back of the computer, unscrew the screws connecting the top panel to the case.
- Inside the computer, Unscrew the screws connecting the top panel to the case.
- Slide the top panel backward and lift it off the case.

Step 4



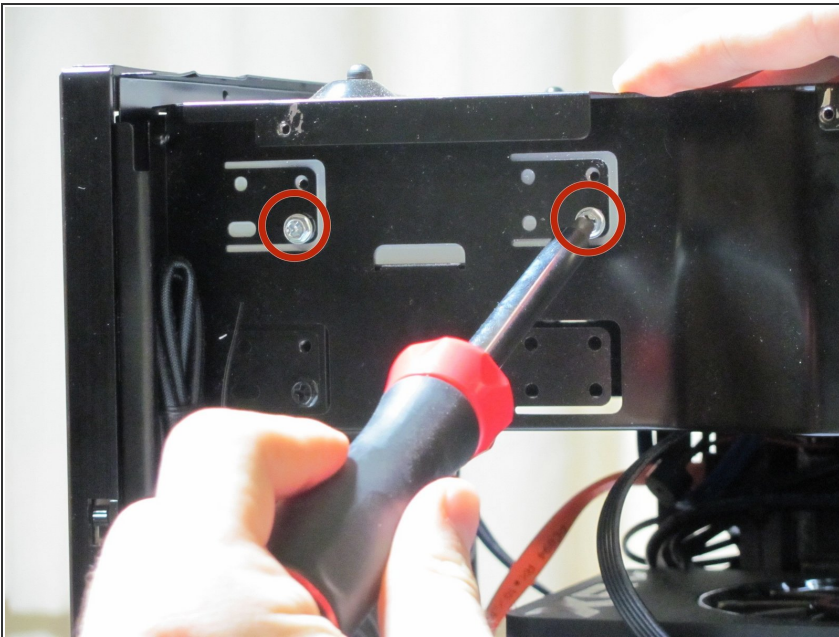
- Locate the CD drive within the computer case.

Step 5



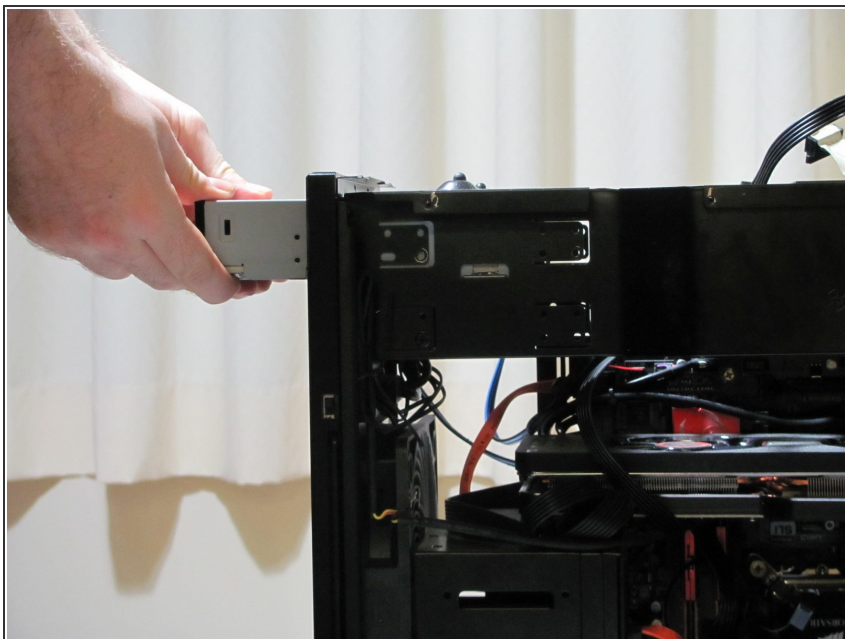
- Locate the cables attached to the back of the CD drive.
- Remove the cables. In order to do this gently but firmly grasp the cables and pull backwards.
- ⓘ I recommend marking the cords you unplug with a piece of tape so you can easily find them again later.
- ⓘ If the cables are unreachable, you may need to do the next two steps before this one.

Step 6



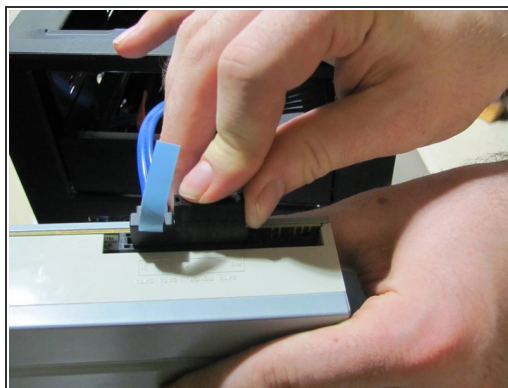
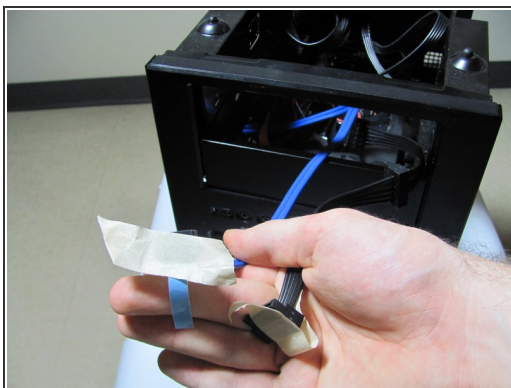
- Locate and unscrew the screws holding the CD drive to the case.

Step 7



- Slide CD drive out of the front of the case.

Step 8



- Get your new CD drive.
- Pull the taped cables through the opening for the CD drive.
- Remove the tape from the cables.
- Plug the cables into the new CD drive.
- Slide the new CD drive back into the front of the case.

To reassemble your device, follow these instructions in reverse order.