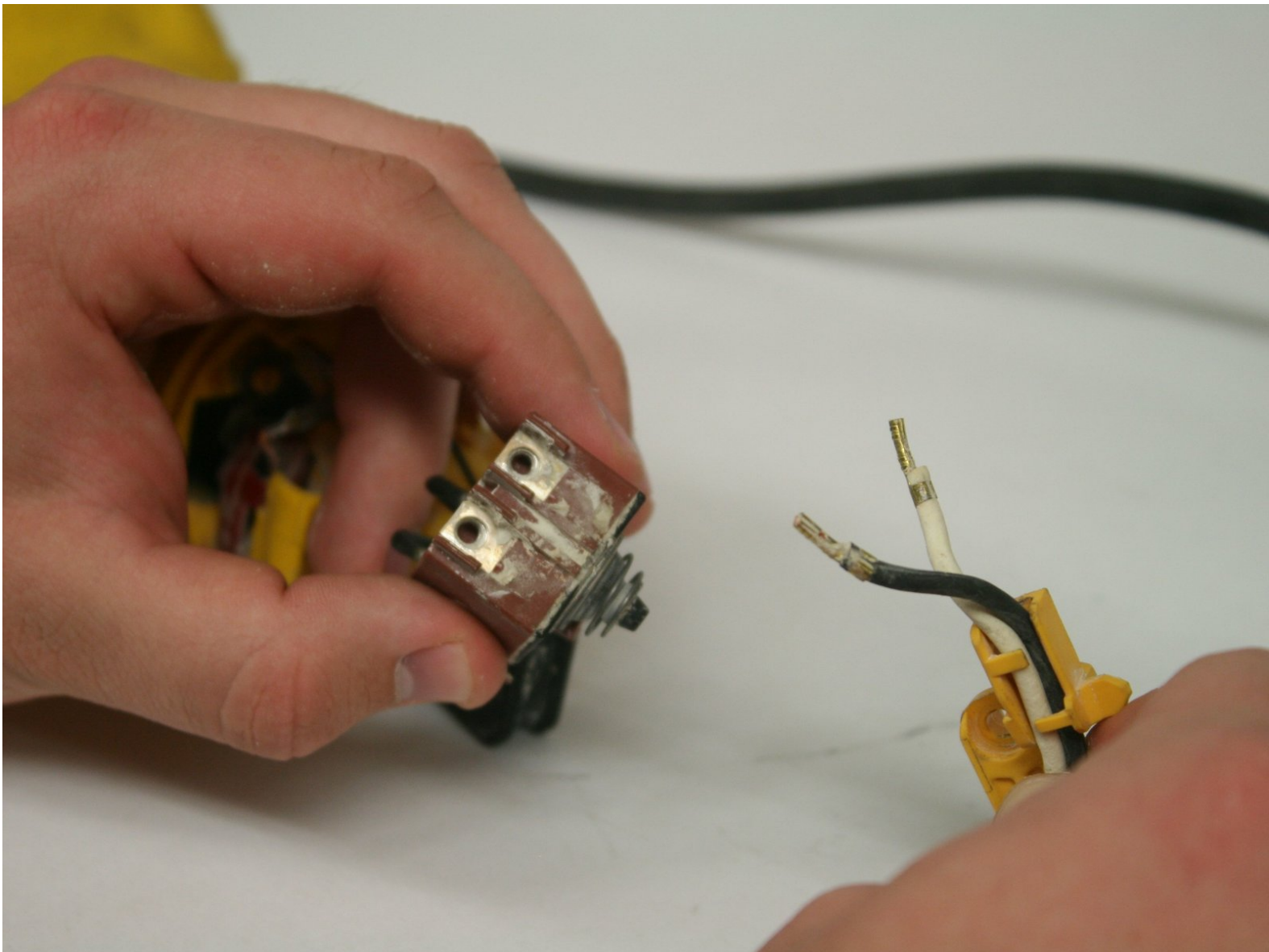




DeWalt D28110 Power Cord Replacement

A torn or malfunctioning power cord is dangerous and may be the reason for loss of power. This guide explains how to replace the entire cable.

Written By: Andrew



INTRODUCTION

This guide will take you through removing the back panel assembly and disconnecting the power cable from the inner electric components.

TOOLS:

- [JIS Driver Set](#) (1)
 - [Spudger](#) (1)
 - [T15 Security Torx Screwdriver](#) (1)
-

Step 1 — Disassembling DeWalt D28110 Back Panel Disassembly



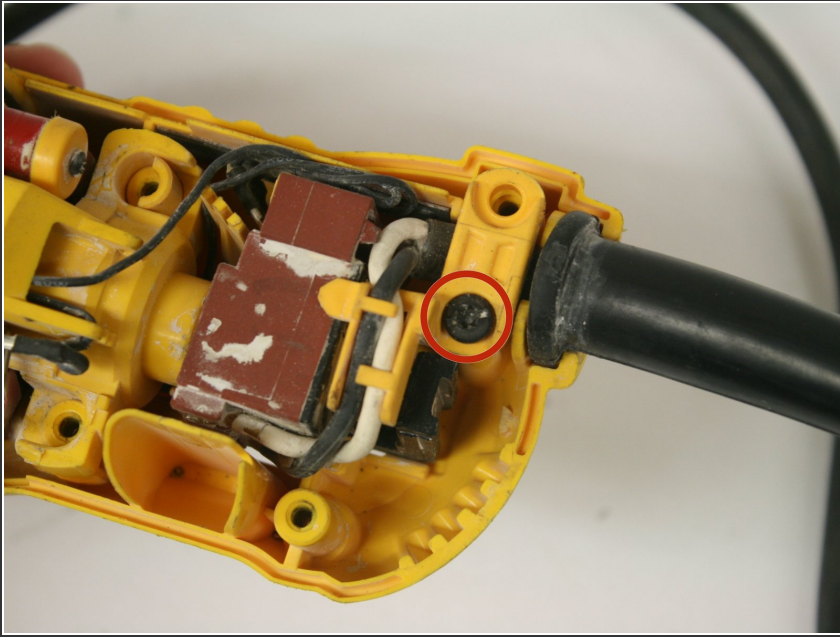
- Using the T-15 screwdriver, remove the four 22-mm torx screws holding the back panel in place.
- ⚠ Unplug the grinder before any disassembly.

Step 2



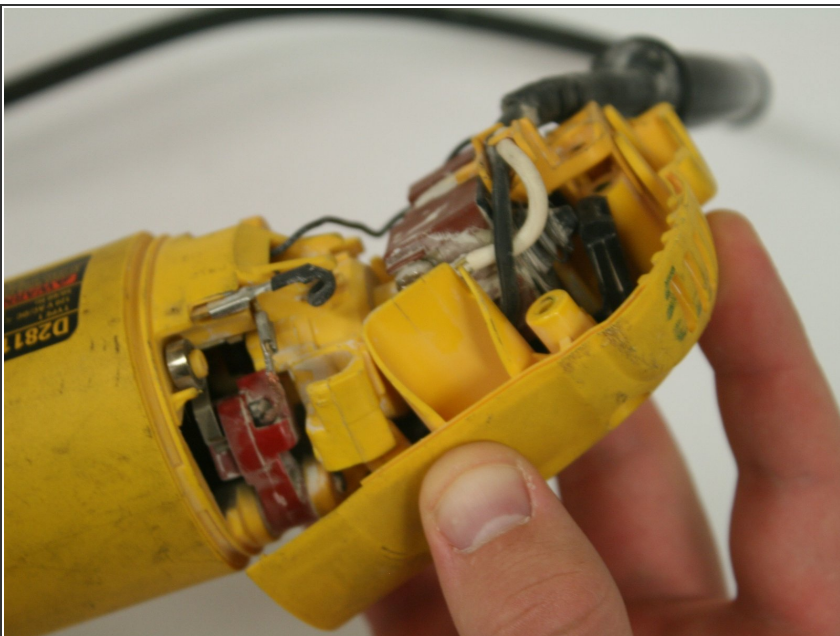
- Use the edge of the spudger to loosen and remove the back panel.

Step 3



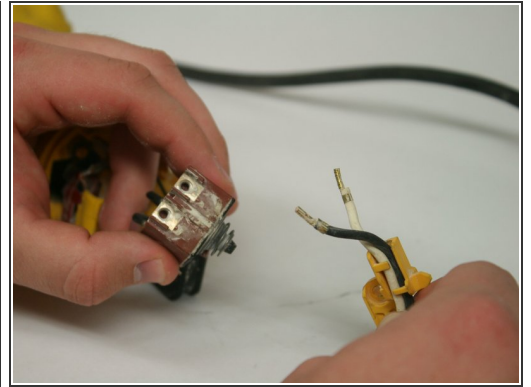
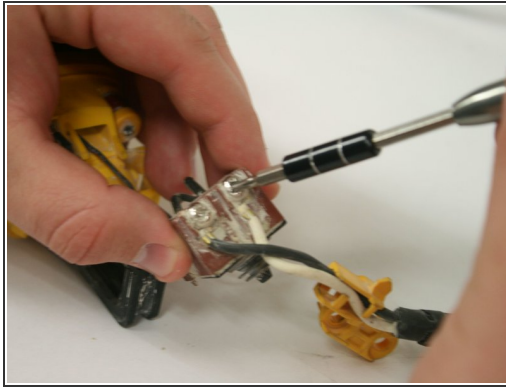
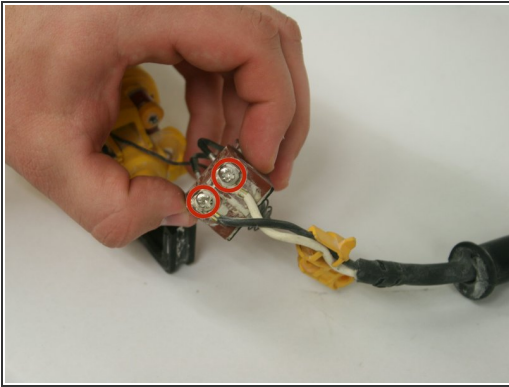
- Remove the single 20-mm torx screw holding the rear panel in place.

Step 4



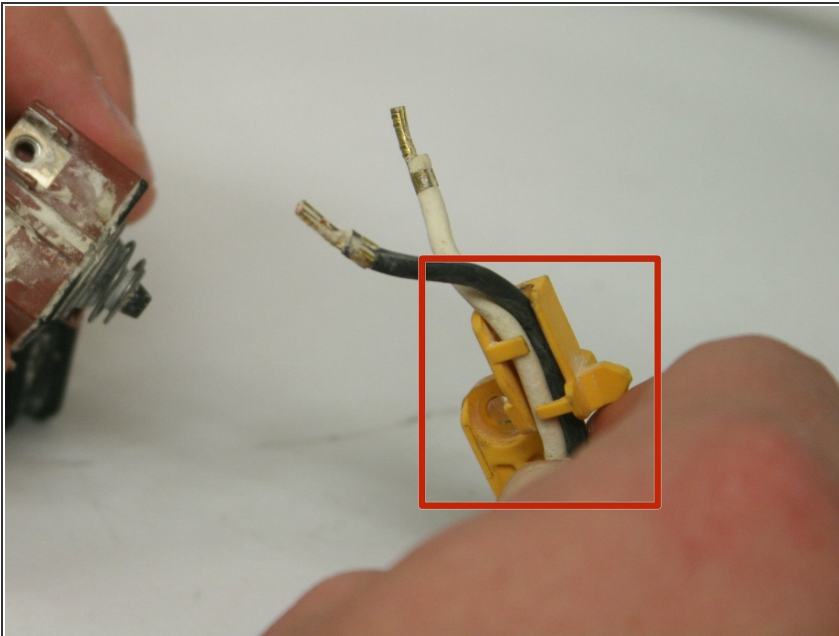
- Pull back the rear side of the back panel.

Step 5 — Power Cord



- Locate the red switch box.
- Using the J-10 screwdriver, unscrew the screws and detach the wires.
 - ☑ Be sure to remember under which screw the "ground" wire (black) goes.

Step 6



- Unthread the two wires from the power cord clamp.

To reassemble your device, follow these instructions in reverse order.