



DeWalt D28110 Brush Arm Replacement

The brush arm holds the brushes in place that electrically connect the armature rotor. Replacing this may fix a grinder that won't spin consistently.

Written By: Kean Wee



INTRODUCTION

This guide will walk you through replacing the plastic arms holding the brushes in place. These are both located at the base of the brush motor and are required for electrical connection.



TOOLS:

- [Spudger](#) (1)



PARTS:

- [DewaltD28110 Brush Arm](#) (1)

Step 1 — Disassembling DeWalt D28110 Back Panel Disassembly



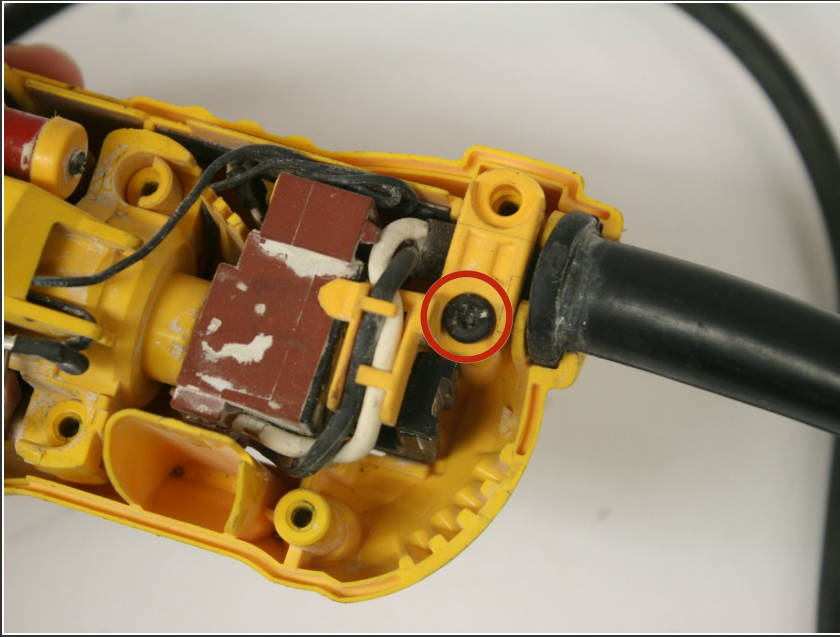
- Using the T-15 screwdriver, remove the four 22-mm torx screws holding the back panel in place.
- ⚠ Unplug the grinder before any disassembly.

Step 2



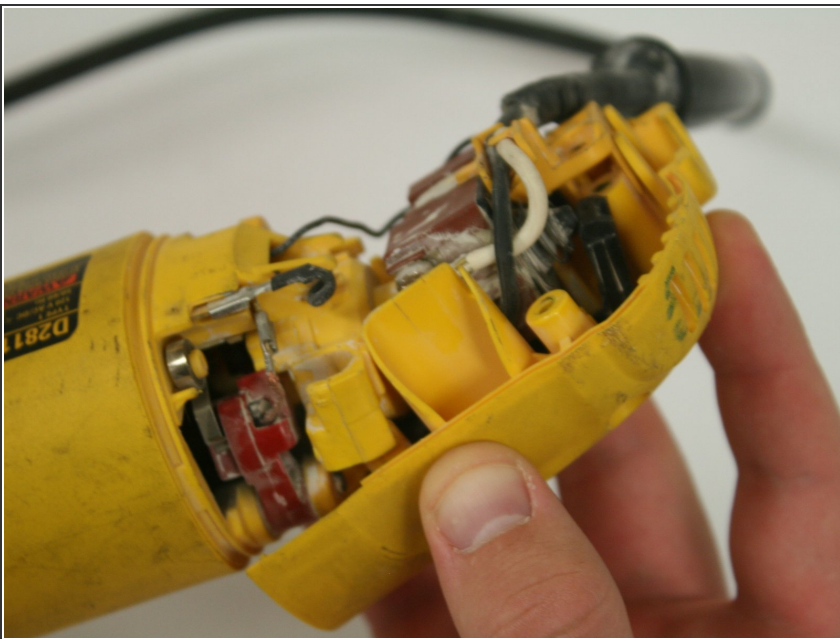
- Use the edge of the spudger to loosen and remove the back panel.

Step 3



- Remove the single 20-mm torx screw holding the rear panel in place.

Step 4



- Pull back the rear side of the back panel.

Step 5 — Brush Arm



- Using the T-6 screwdriver, unscrew torx screw holding the arm in place.

Step 6



- Gently remove the arm from the assembly.

To reassemble your device, follow these instructions in reverse order.