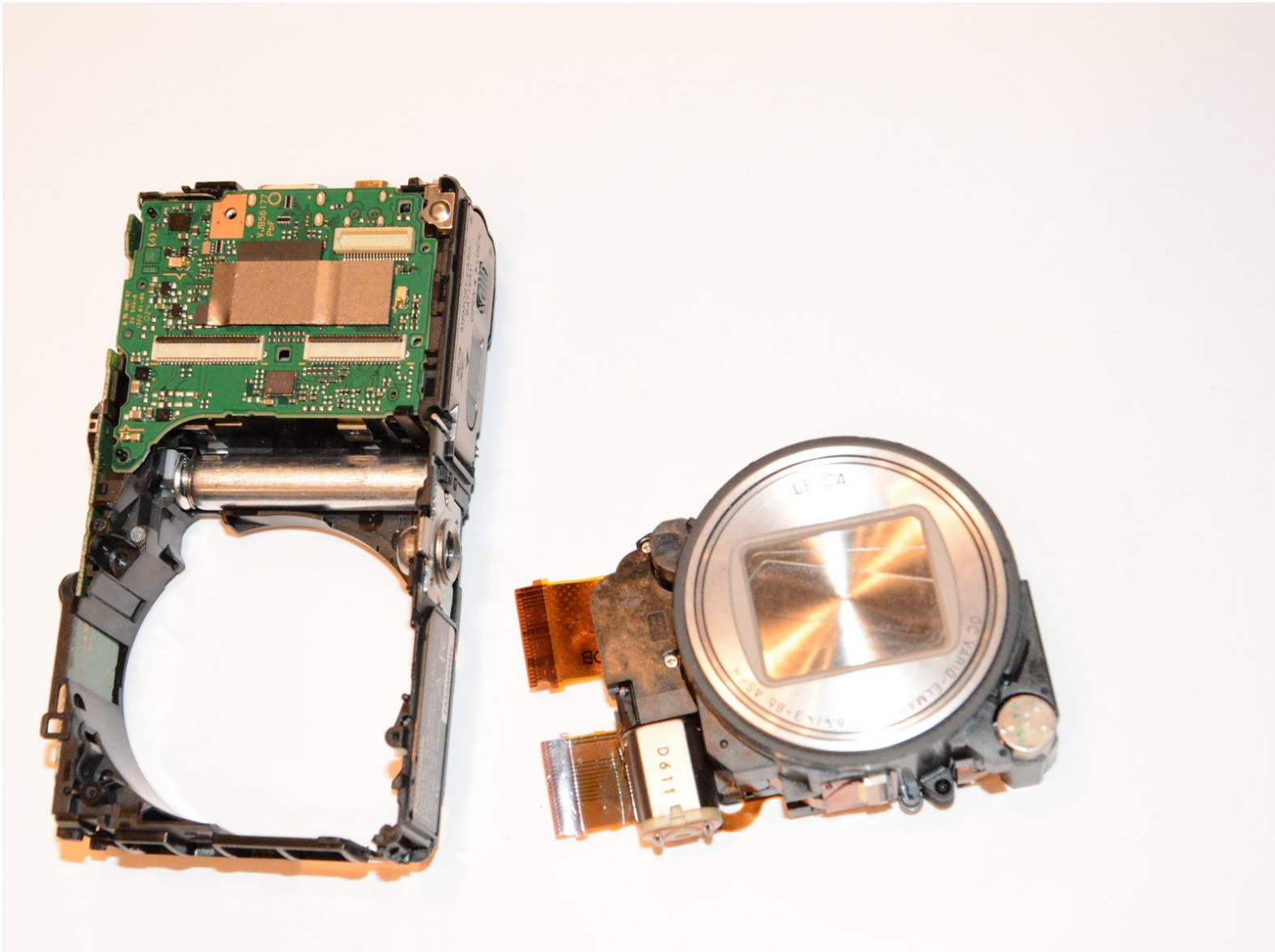




Panasonic Lumix DMC-ZS25 Lens Replacement

How to replace the entire camera lens.

Written By: Abbas Khan



INTRODUCTION

Use this guide to replace the camera lens of your Panasonic Lumix DMC-ZS25. It will describe the procedure to disassemble your camera in order to replace the lens.



TOOLS:

- [Phillips #00 Screwdriver](#) (1)
 - [Spudger](#) (1)
 - [iFixit Opening Tools](#) (1)
-

Step 1 — Camera lens



- Open the four 3.40 mm screws from the right and left sides of your Panasonic Lumix Camera.
- Remove the two 2.60 mm screws located next to the battery.

Step 2



- Use the iFixit opening tool to open the outer cover of your device.
 - The easiest place to open your device is from the HDMI port.
- ⚠ Gently open it to avoid breaking the cover.

Step 3

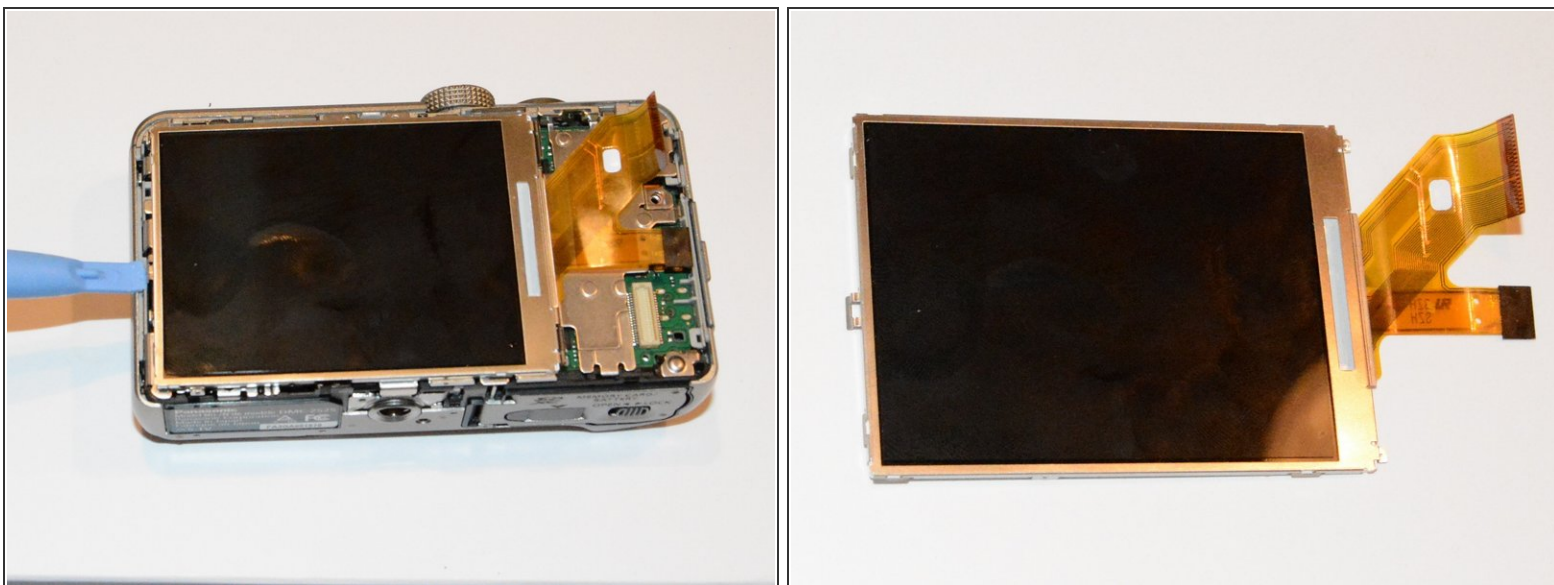


- Use a spudger to detach the ribbon cable.

⚠ Be careful when using the spudger, as it can cause damage to the ribbon.

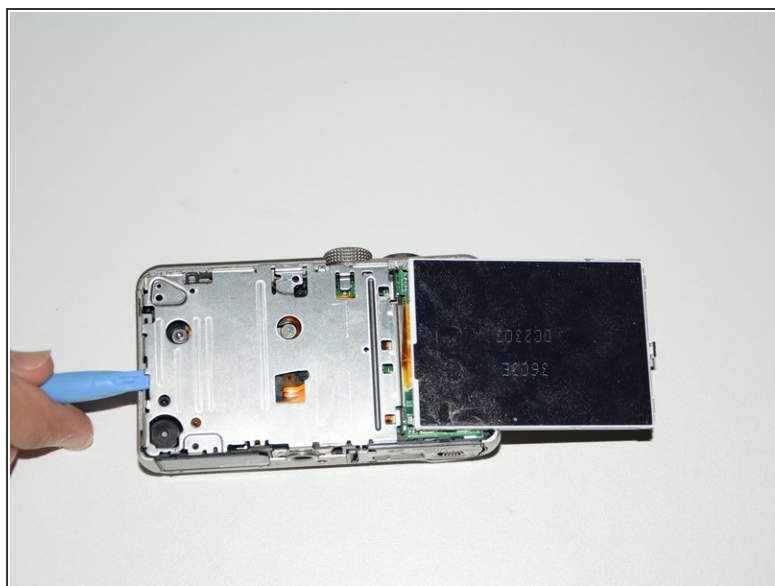
- After releasing the screen cable, use the iFixit opening tool to lift the button board.
- Once you hear a "click" sound, you have successfully opened the buttons board.

Step 4



- Remove the screen using the iFixit opening tool.

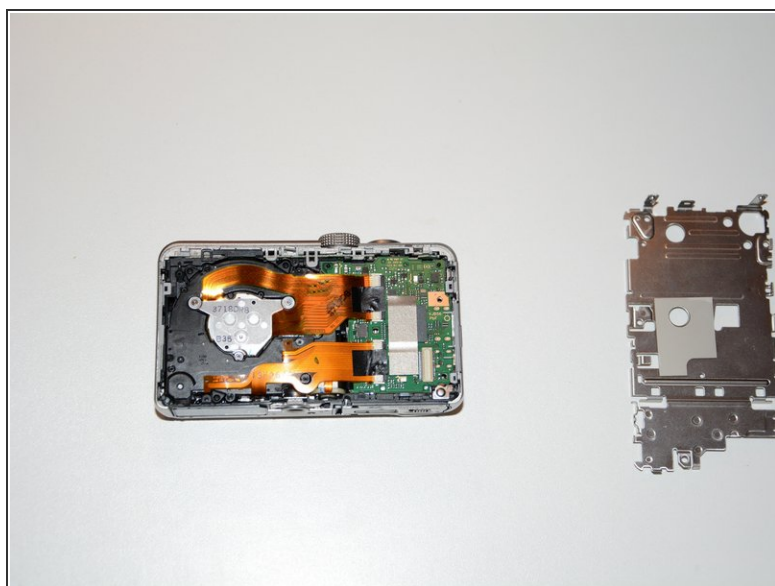
Step 5



- Open the two 4.20 mm screws to remove the inner cover located beneath the screen.

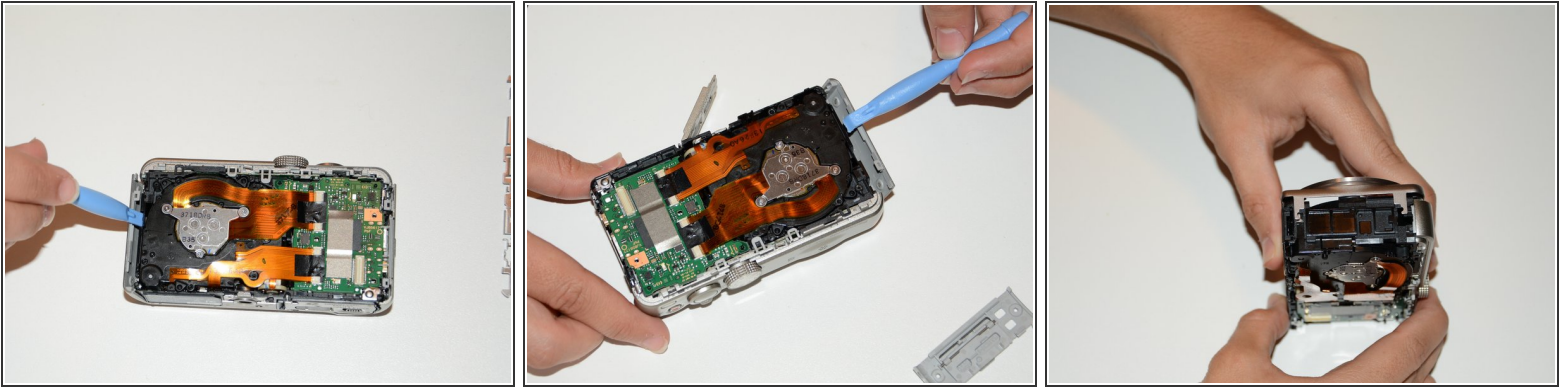
⚠ Use the iFixit opening tool to assist in safely removing the inner cover.

Step 6



- Separate the device into two pieces as shown.

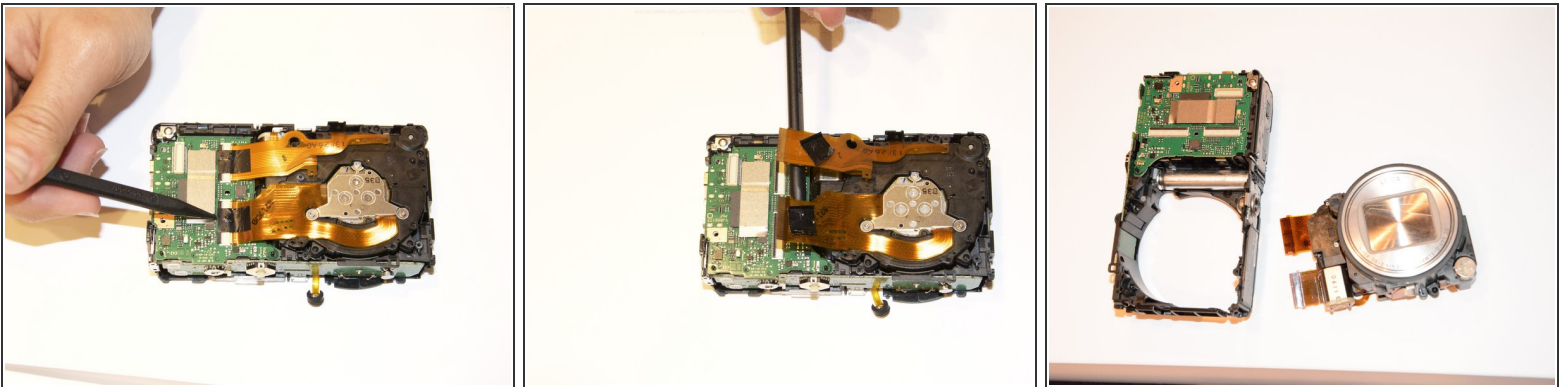
Step 7



- Remove the side cover using the iFixit opening tool.

⚠ Exercise caution when you remove the front cover as damage to the device can occur.

Step 8



- Use the spudger to unlock the screen cables from the circuit board. Carefully, lift up the black clip up to release the cables.
- Use your hands to remove the lens.

To reassemble your device, follow these instructions in reverse order.