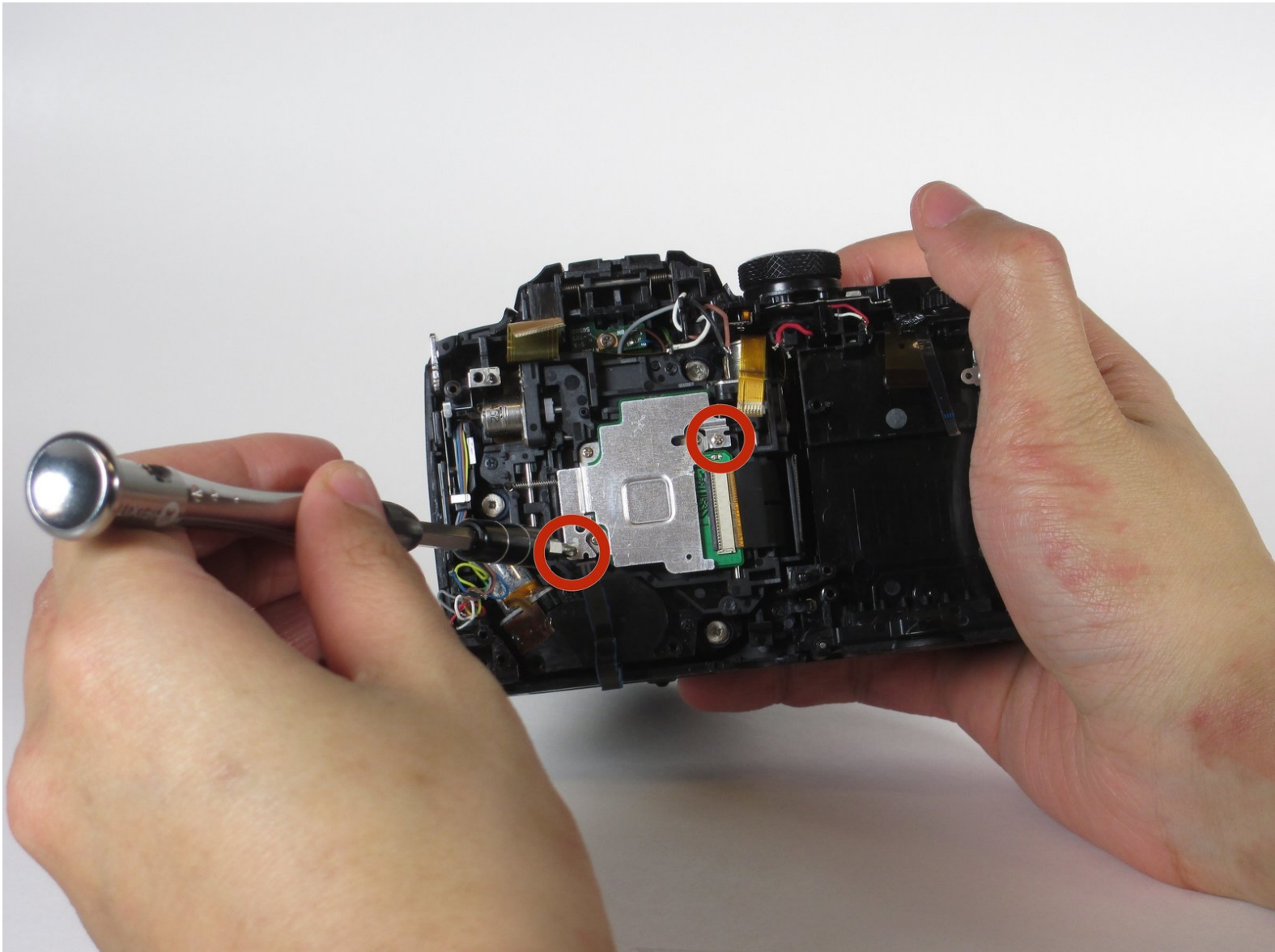




# Nikon COOLPIX P500 Image Sensor Replacement

This guide demonstrates how to remove the image sensor from a Nikon COOLPIX P500 camera.

Written By: Kevin Scott



---

# INTRODUCTION

This guide demonstrates how to remove the image sensor from your Nikon COOLPIX P500 camera.

---



## TOOLS:

- [Spudger](#) (1)
  - [Phillips #00 Screwdriver](#) (1)
  - [Soldering Iron](#) (1)
-

## Step 1 — Motherboard



- Remove all the marked screws using a PH00 screwdriver.
- Remove the two 3mm screws on the grip.
- Remove the two 4mm screws on the side opposite the grip.
- Remove the three 4mm screws on the base of the camera.
- Remove the four 3mm screws on the base of the camera.

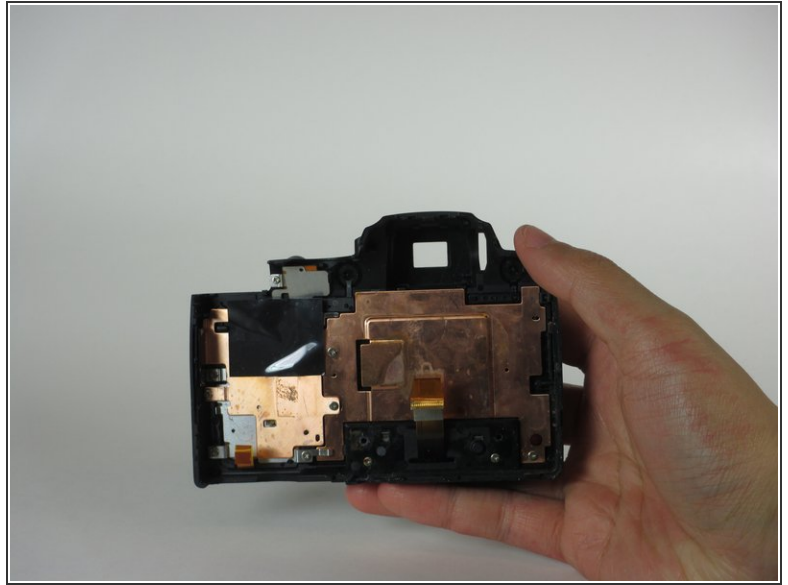
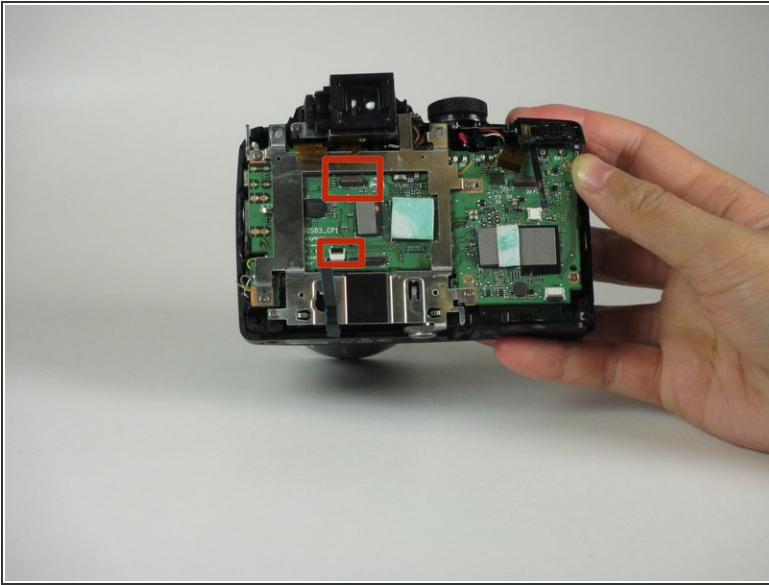
## Step 2 — Removing hidden screws



Open the flash module of the camera.

- Remove the 2mm screw from the microphone metal grid using a PH00 screwdriver.
- Remove the 4mm screw that was under the metal microphone grid using a PH00 screwdriver.

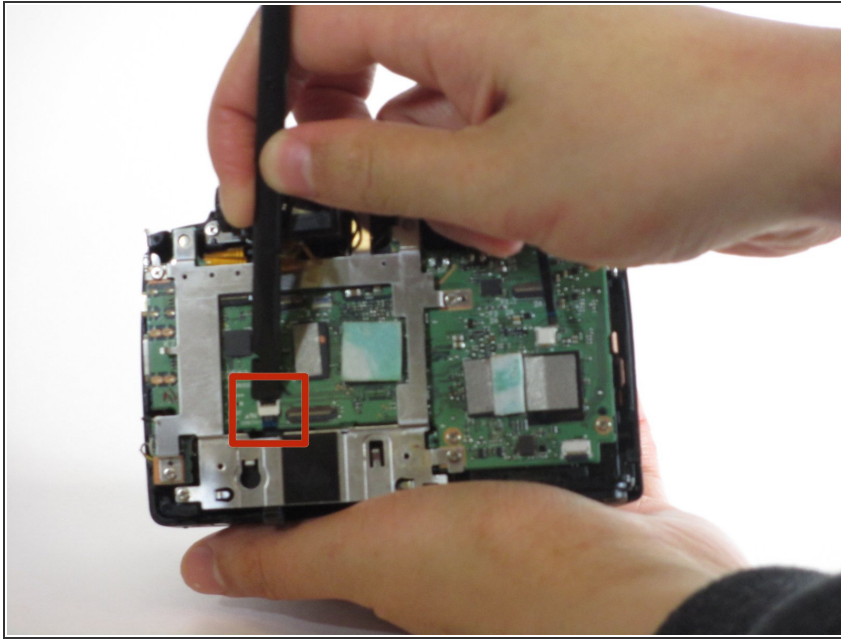
## Step 3



- Separate the two parts of the body of the camera slightly.
- Release the two cables by lifting up their respective clips with a spudger.
- ⓘ Make sure not to pull too hard because there are connector ribbons.
- ⓘ Detach the connector ribbons before fully separating the camera into two pieces.
- ⓘ These pictures were taken after the connector ribbons were released and the camera was separated into two parts. You will need to release the connector ribbons while the camera is still in one piece before you can separate it like the pictures.

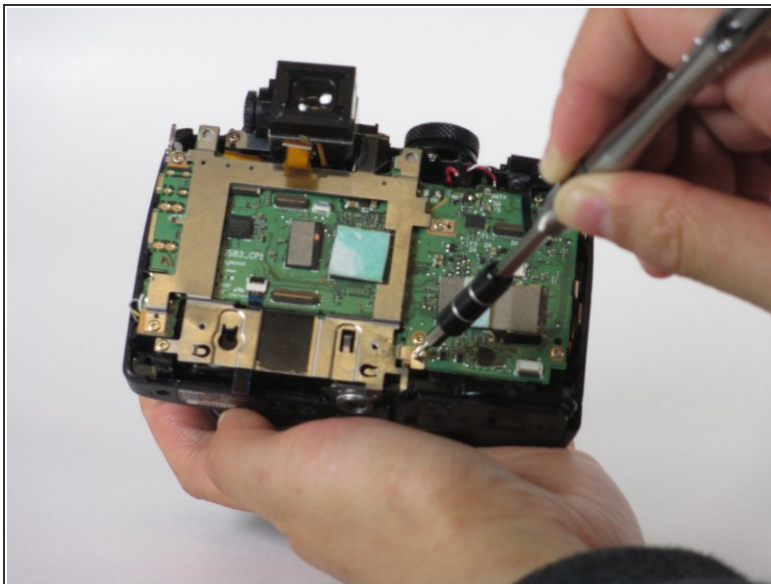


## Step 4



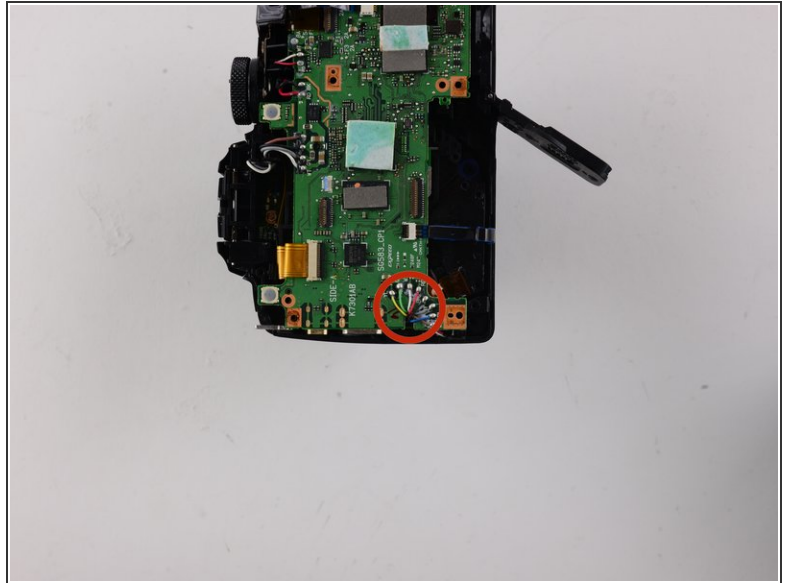
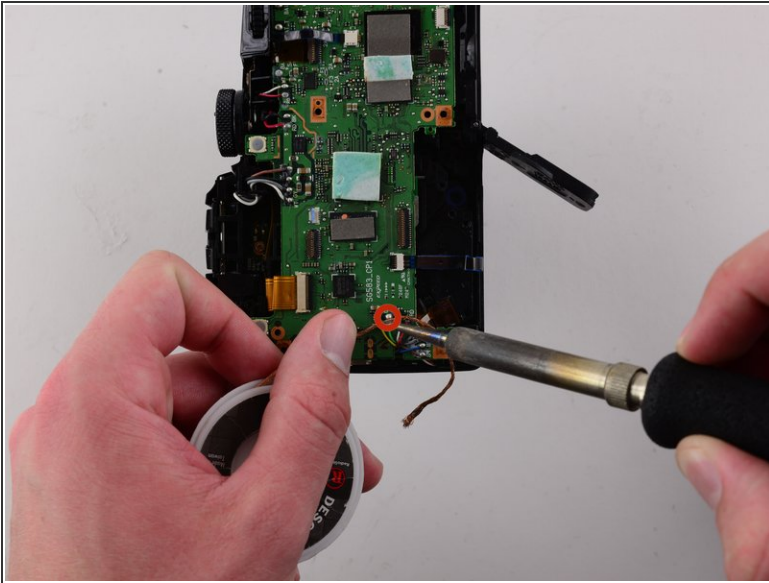
- Use a spudger to flip up the cable lock in order to release the ribbon.

## Step 5



- Use a PH00 screwdriver to unscrew the four labeled 3mm metal screws on the metal backing.
- Remove the four labeled 4mm screws connected to the motherboard.
- Remove the metal support.

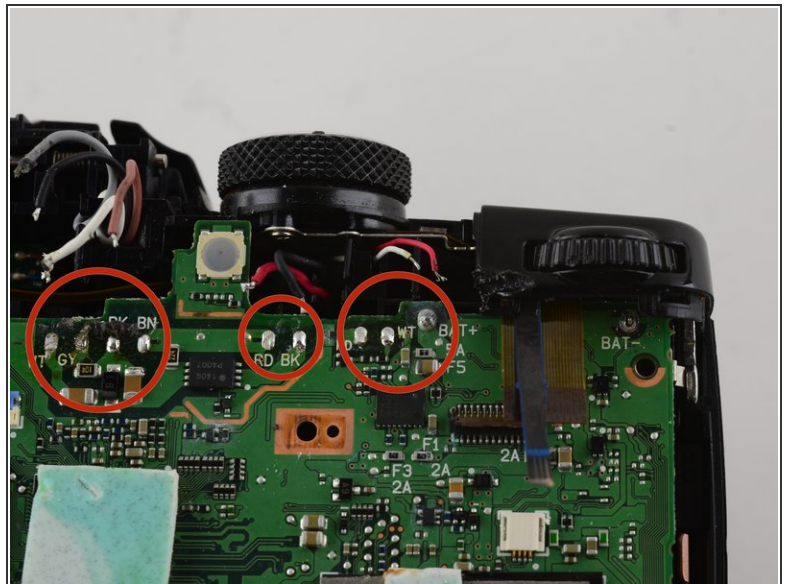
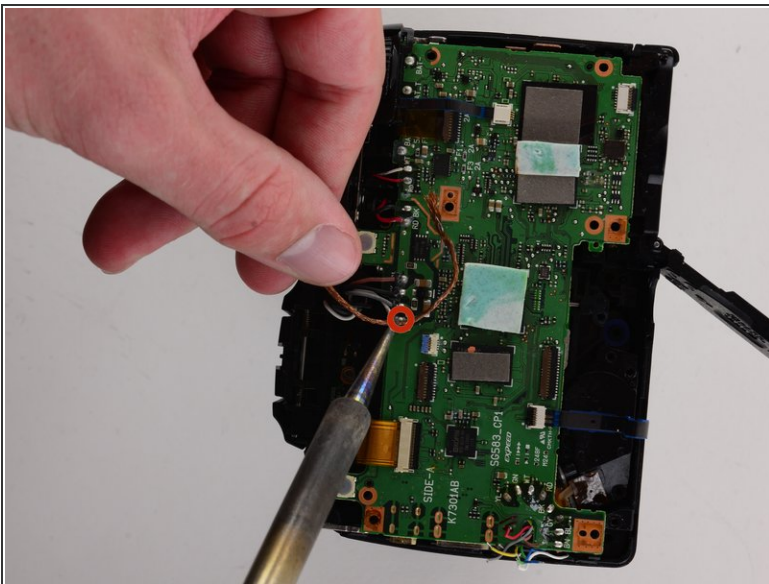
## Step 6



- Desolder the labeled soldering points.

⚠ Soldering irons are very hot. They can damage your device and inflict physical harm if proper care is not taken.

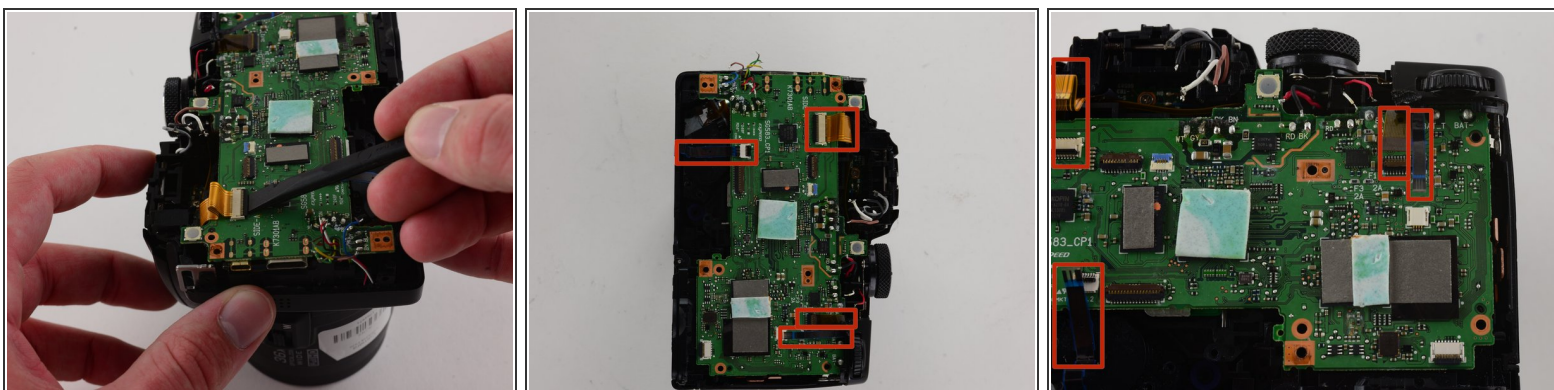
## Step 7



- Desolder the labeled soldering points.

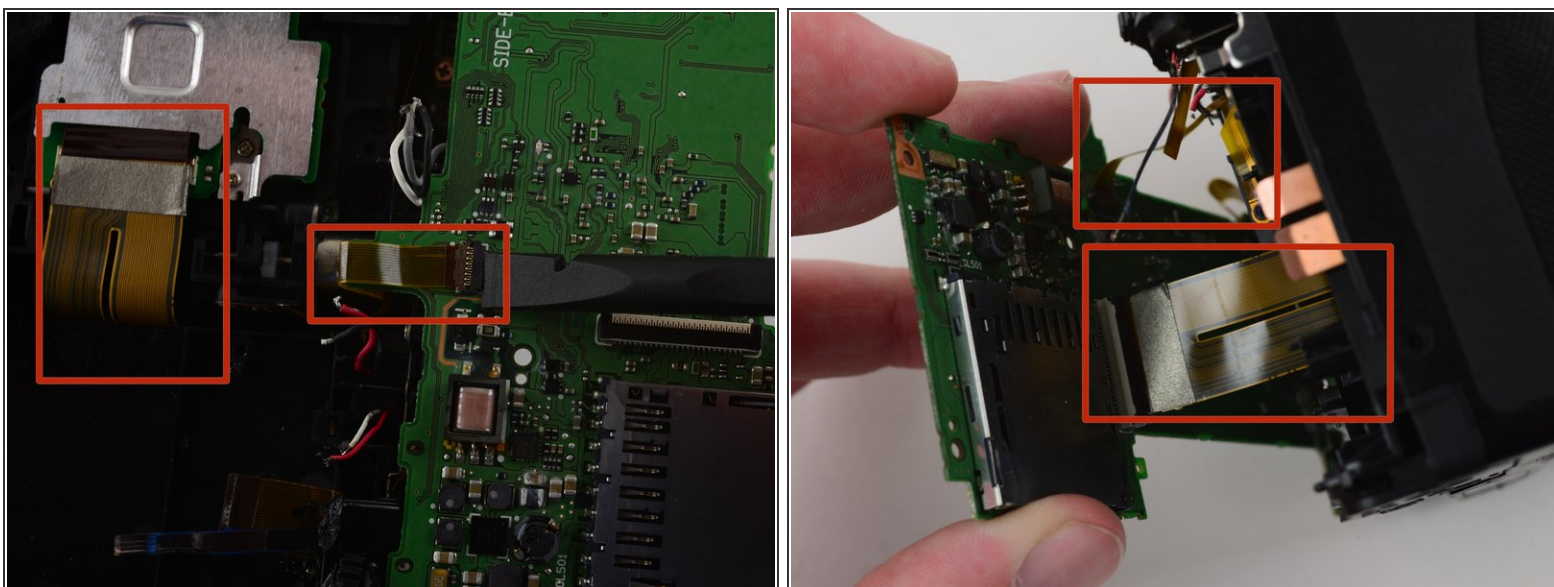


## Step 8



- Use a spudger to unlock the labeled connector ribbons.
- Disconnect the labeled connector ribbons.

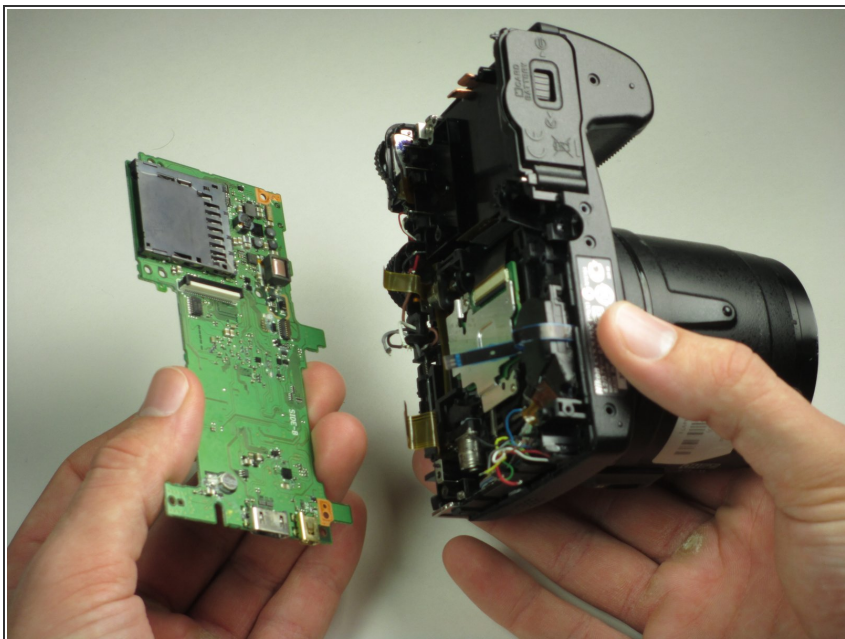
## Step 9



- Use a spudger to unlock the two connector ribbons.
- Disconnect the two connector ribbons.

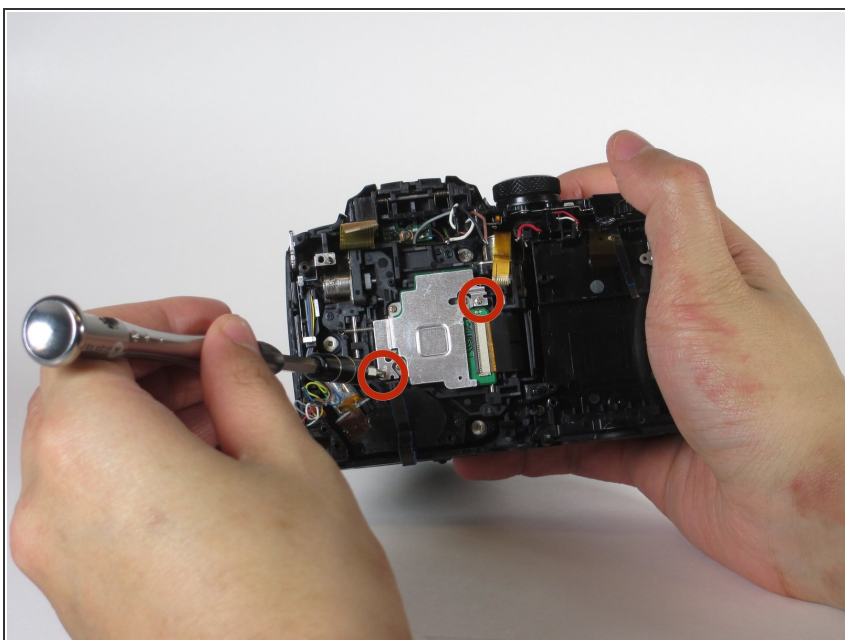


## Step 10



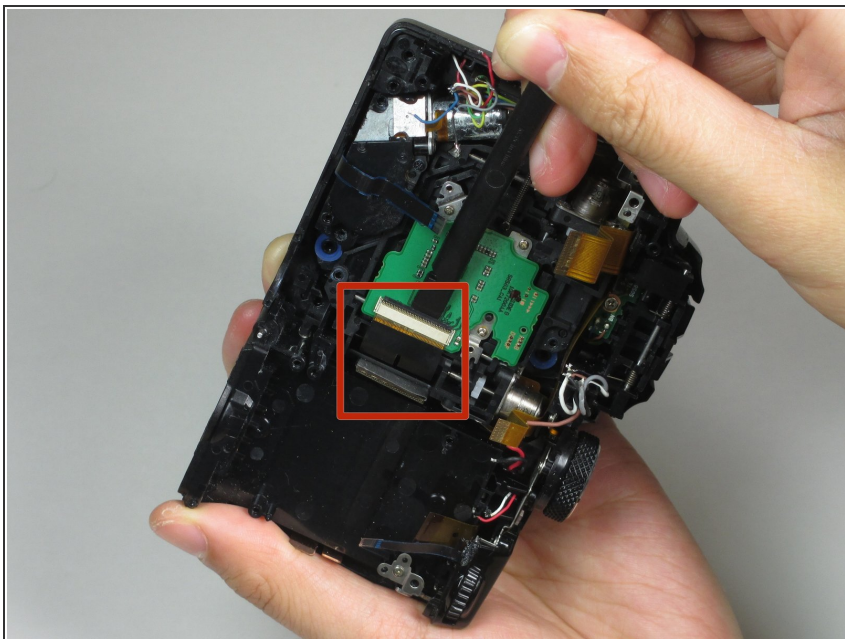
- Remove the mother board from the camera.

## Step 11 — Image Sensor



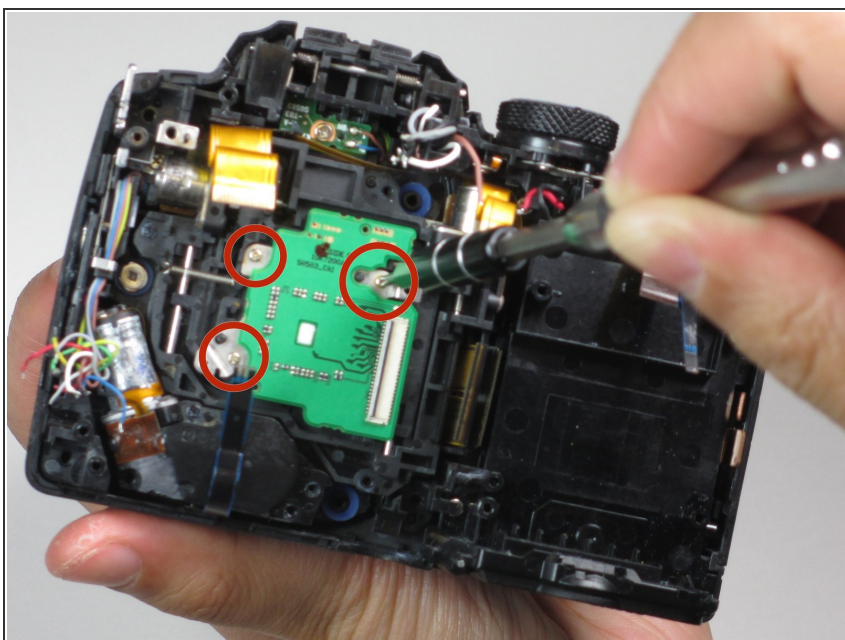
- Use a PH00 screwdriver to remove the two 2mm metal screws from the image sensor cover.

## Step 12



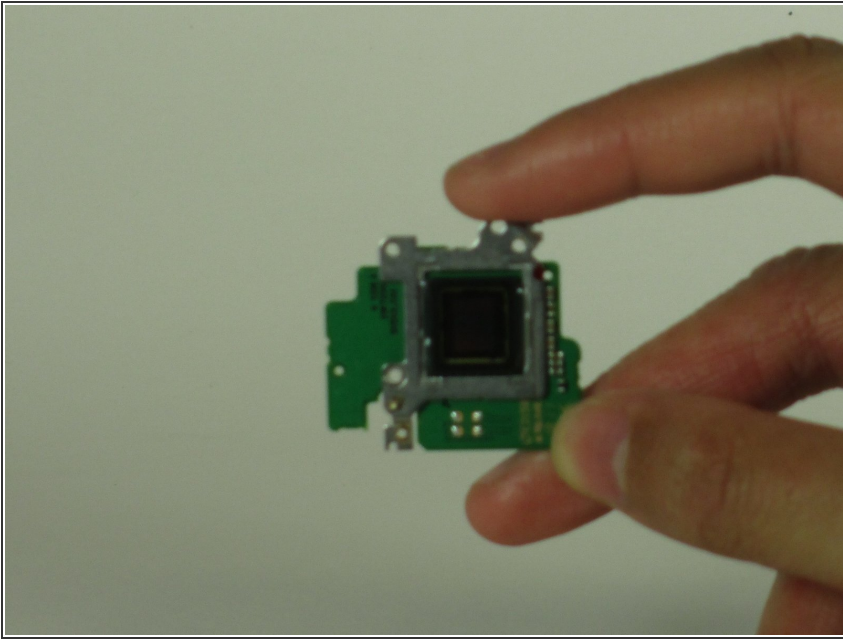
- Use a spudger to unlock the connector ribbon.

## Step 13



- Use a PH00 screwdriver to remove the three 3mm screws holding the image sensor down.

## Step 14



- Remove the image sensor.

To reassemble your device, follow these instructions in reverse order.