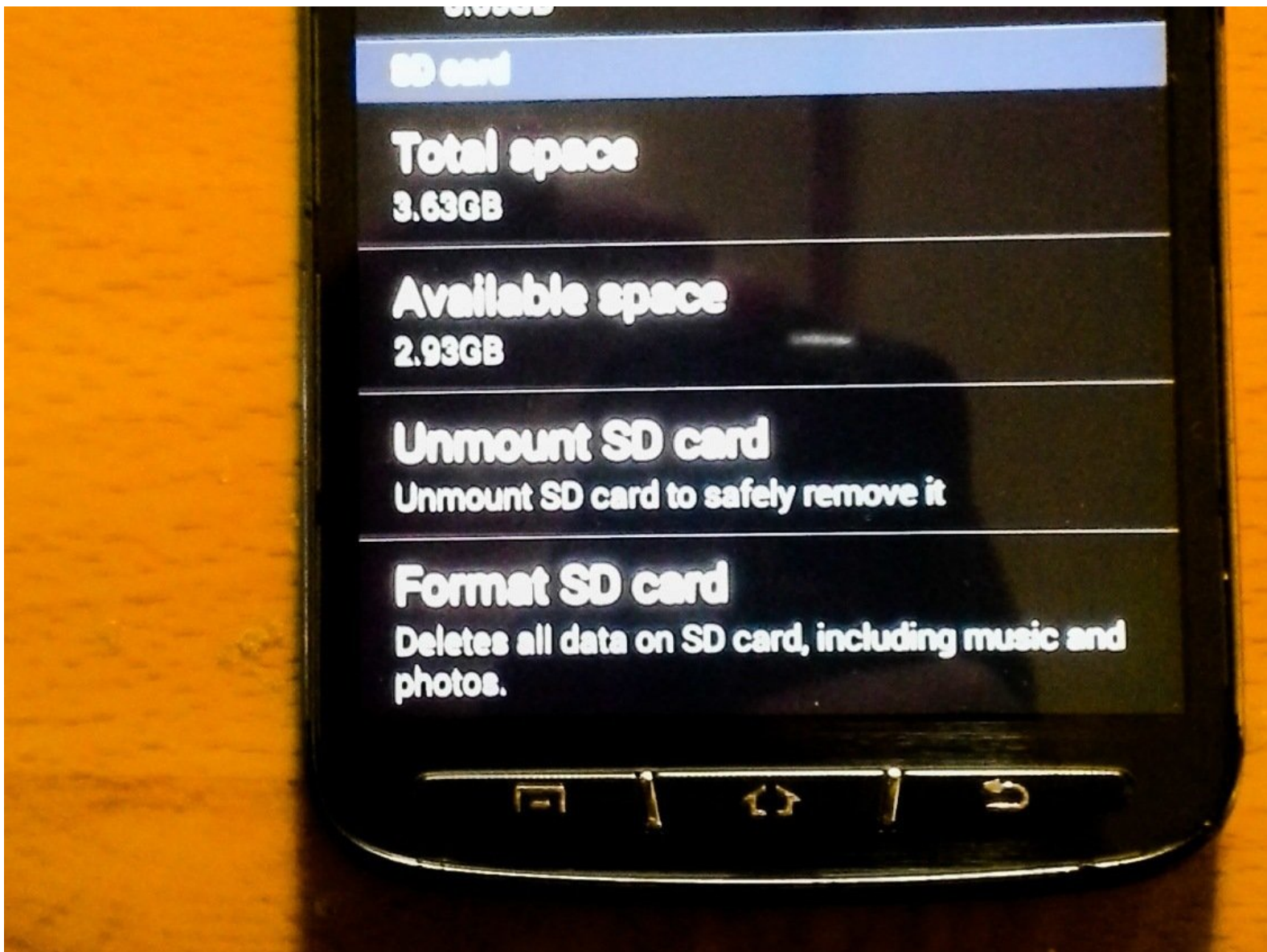




# Disassembling Samsung Galaxy S4 Active

In this guide I will show you how to COMPLETELY disassemble your S4 Active. So that if you are ever making any repairs, you won't unintentionally damage your phone.

Written By: Tucker Cunningham



# INTRODUCTION

While disassembling my S4 Active to replace my rear camera, I accidentally broke my mid-frame. ( broken mid-frame = no longer water resistant ) This is due to the fact that I couldn't find a complete disassembly guide for the Samsung Galaxy S4 Active to show me the proper way to remove it. I've got new parts coming in the mail. So while I wait, I figured I would make this guide so that no one else has to damage their phone!



## TOOLS:

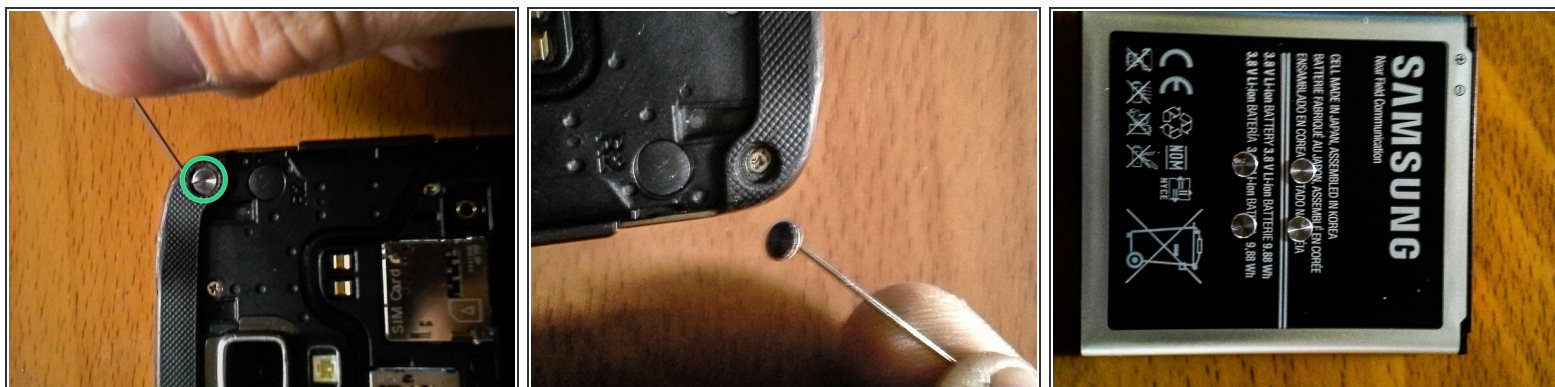
- [Phillips #00 Screwdriver](#) (1)
  - [Spudger](#) (1)
  - [iFixit Opening Tools](#) (1)
  - [Magnetic Project Mat](#) (1)
  - [Tweezers](#) (1)
  - [Phillips #0 Screwdriver](#) (1)
  - [Flathead 3/32" or 2.5 mm Screwdriver](#) (1)
-

## Step 1 — Disassembling Samsung Galaxy S4 Active



- First of all if you have a micro SD card you need to unmount it.
- Now you need to power off your device and then remove the back casing.
- Your next step is to remove the battery, SIM card, and your microSD.

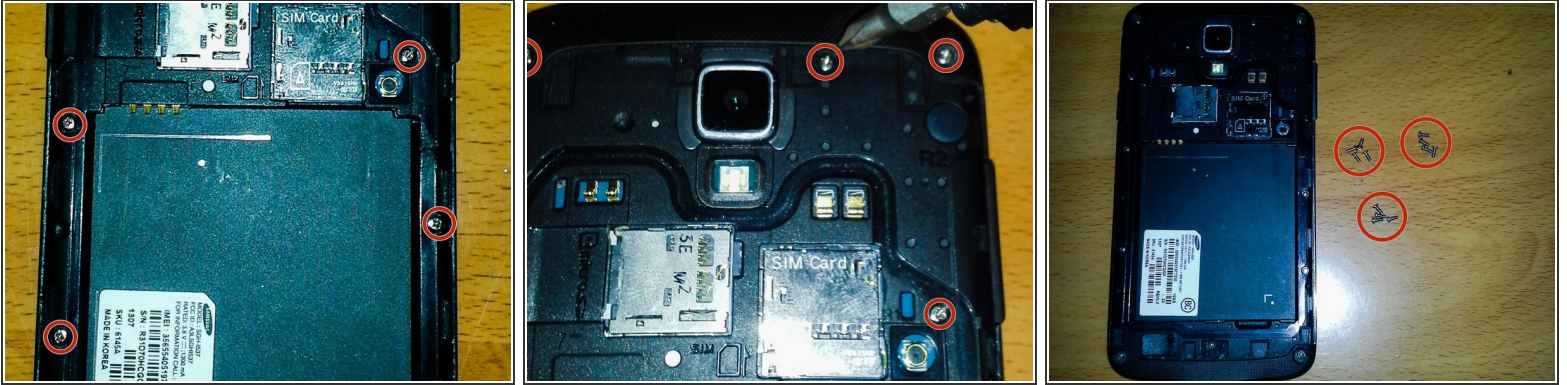
## Step 2 — Make all hardware accessible.



- Now you have to remove 12 screws from the mid frame. But first you must remove the 4 metal circles from the corners of your device.
- I found that a sewing needle is the easiest way to remove just about everything but the screws in your phone.
- I like to stick the 4 metal circles to my battery once removed so I don't lose them.

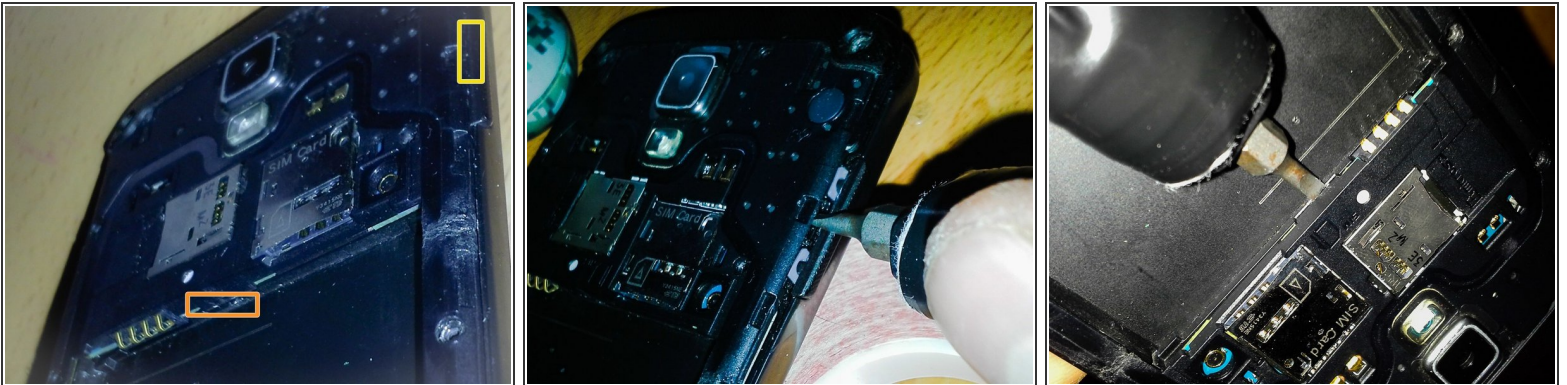


## Step 3 — Remove screws



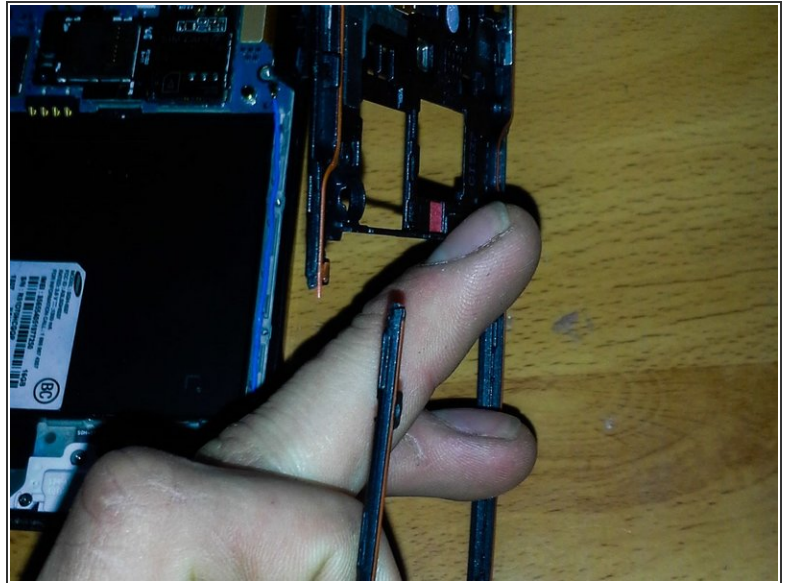
- Now take out the 12 midframe screws.
- Be sure to put them in some sort of container because they are impossible to find when they hit the floor!

## Step 4 — Security clips



- ⚠ Be very cautious when removing the midframe. There are 2 hidden security clips on it. (My midframe broke because I did not know about the security clips when I went to pull my midframe off)
- One of the clips is between your volume button and the midframe. Gently push a flathead screwdriver or a thin blade in between the frame and the volume button.
- The other clip is directly in between the SIM slot and the 4 prong battery terminal. You will see a gap at the bottom of it, lightly pry it up to disengage the clip.

## Step 5 — Remove midframe



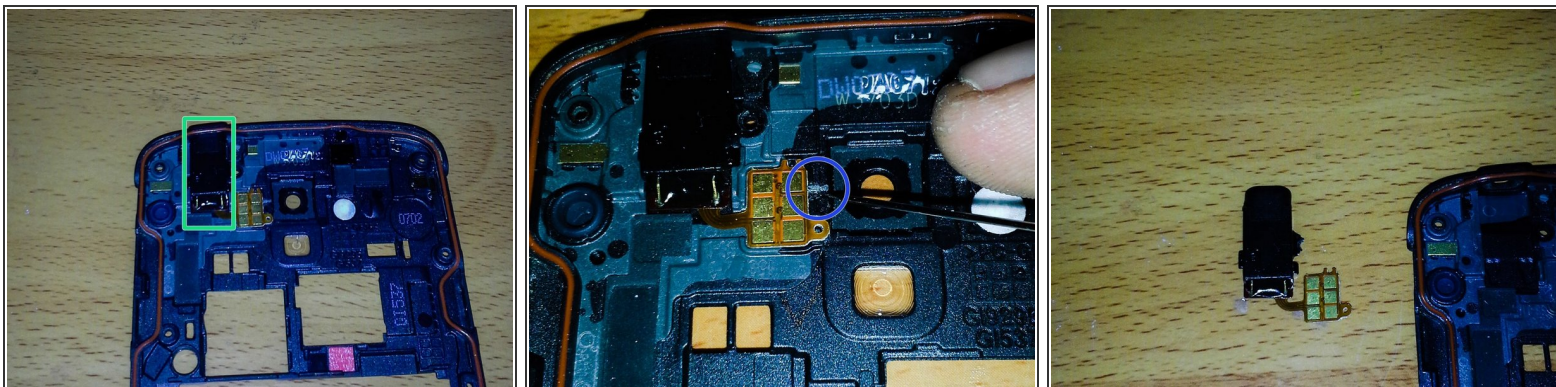
- As you pull the midframe off you will notice that your charging cover fell off the phone. No need to worry, it gets closed back in the phone during reassembly.

⚠ This is what happens when you don't disengage the security clips

- Now you can set the main frame aside because you have one more thing to do to the midframe



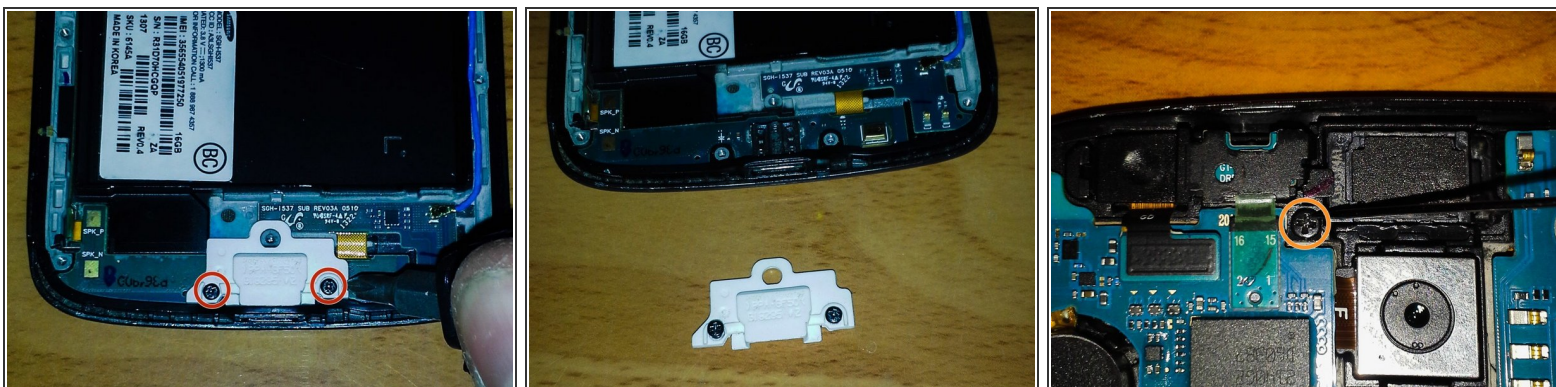
## Step 6 — Headphone jack



- Unlike the standard Galaxy S4, the headphone jack on the S4 Active is attached to the midframe instead of the mainframe.
- All removable flex cables will have an access slot to get a tool (I use a sewing needle) underneath the adhesive and pry it up.
- Once this is done you can remove whatever component is attached to the flex cable. In this case it is the headphone jack.

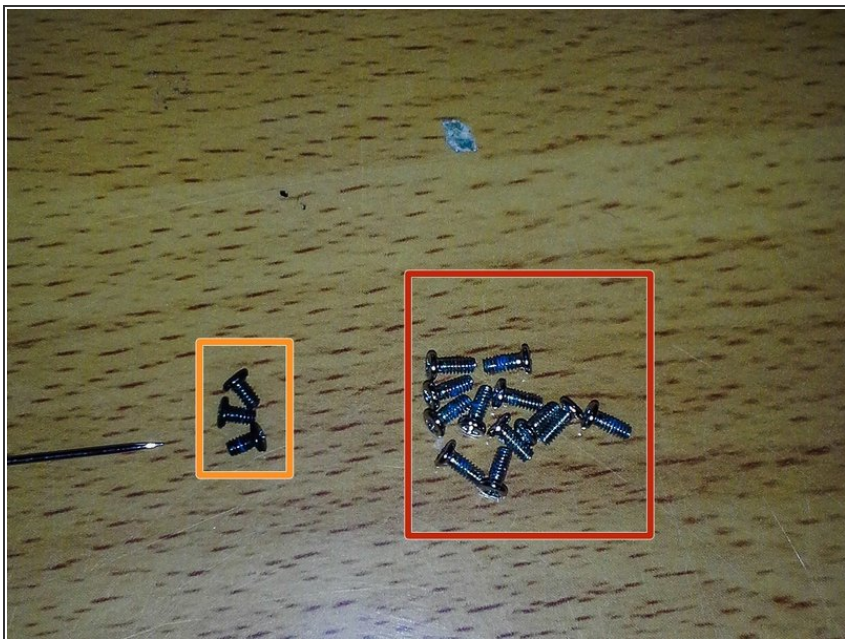
⚠ Always remember to be gentle with the flex cables to avoid rips and tears.

## Step 7 — Daughterboard and Motherboard screws



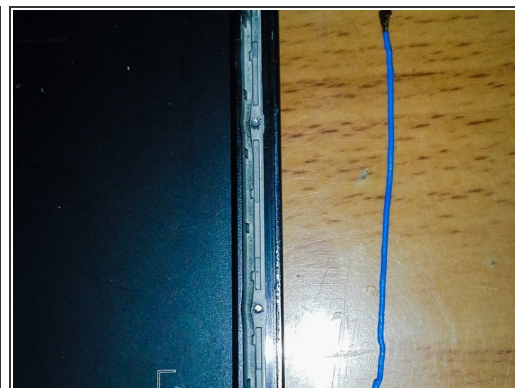
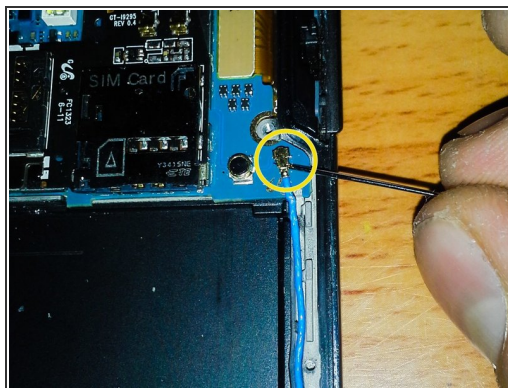
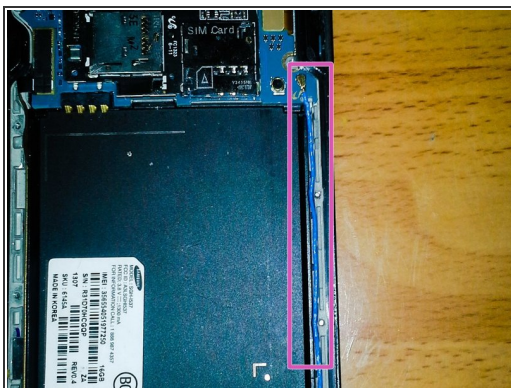
- There are 2 black screws anchoring down the daughterboard/USB charging dock. They are located in the white USB protector
- The final screw in your S4 Active is at the top of the motherboard, on the left side of the earpiece and rear facing camera.

## Step 8 — All 15!



- There is a total of 15 screws.
- 12 (stainless) Midframe screws.
- 3 (black) board screws.

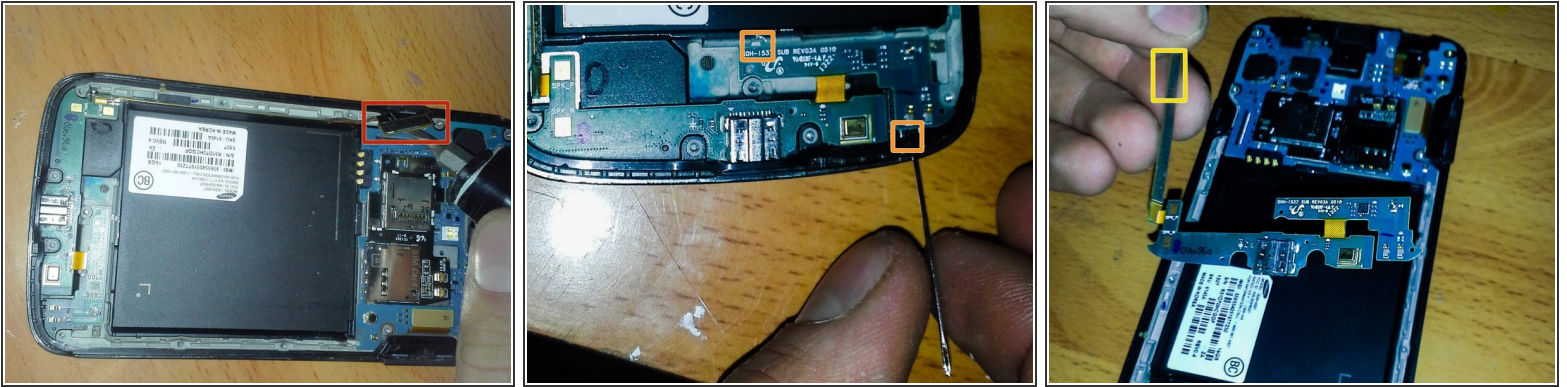
## Step 9 — Antenna



- The antenna runs from the motherboard down to the daughterboard.
- Disconnect both ends of the antenna and set it to the side

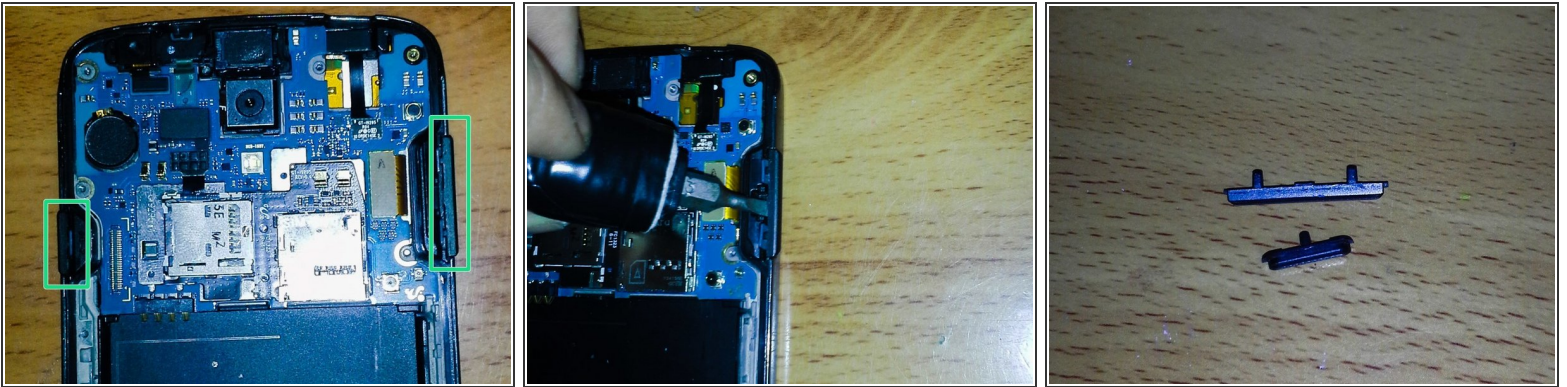


## Step 10 — USB charging port/Daughterboard



- Gently pry the flex cable connector from the motherboard.
- Find the 2 daughterboard access slots and pry the daughterboard from the phone.
- Grab the flex cable and pull the charging port and daughterboard out of the phone. (They are one piece and should come out without any resistance)

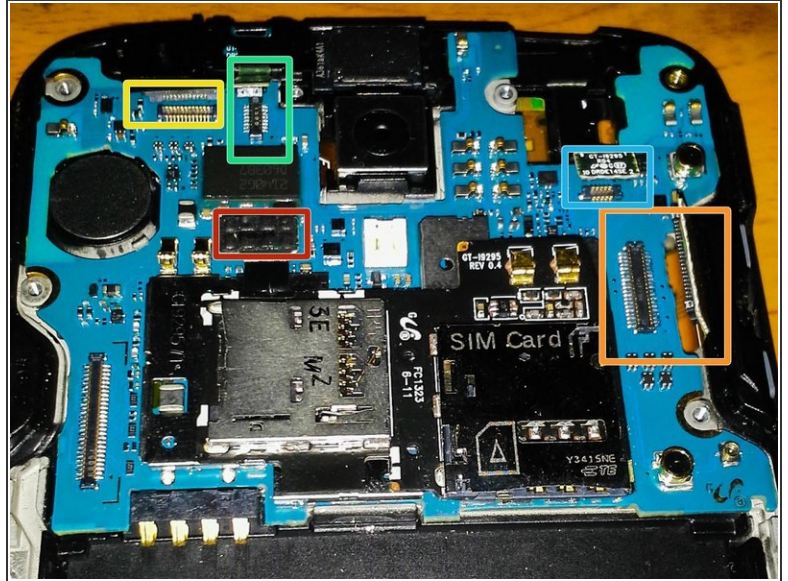
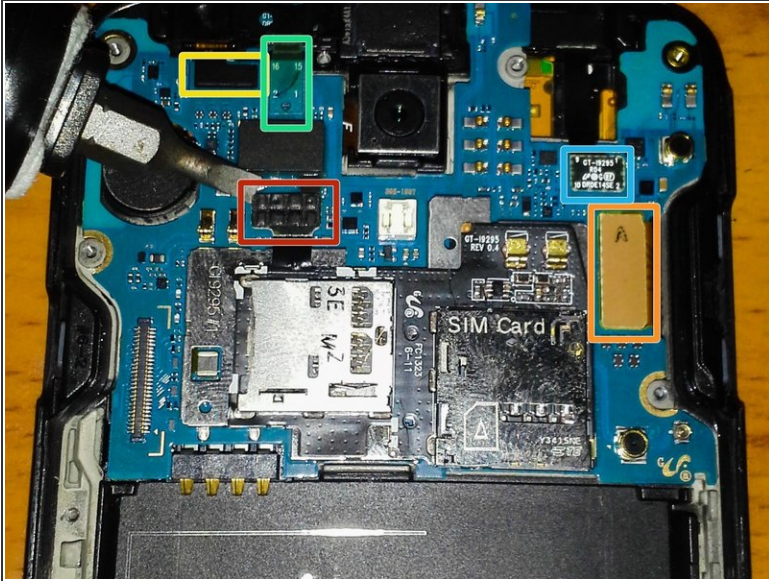
## Step 11 — Power/volume buttons



- These buttons come out fairly easily. Not so much going back in though.
- Just stick a pry tool behind the button and pop it out.



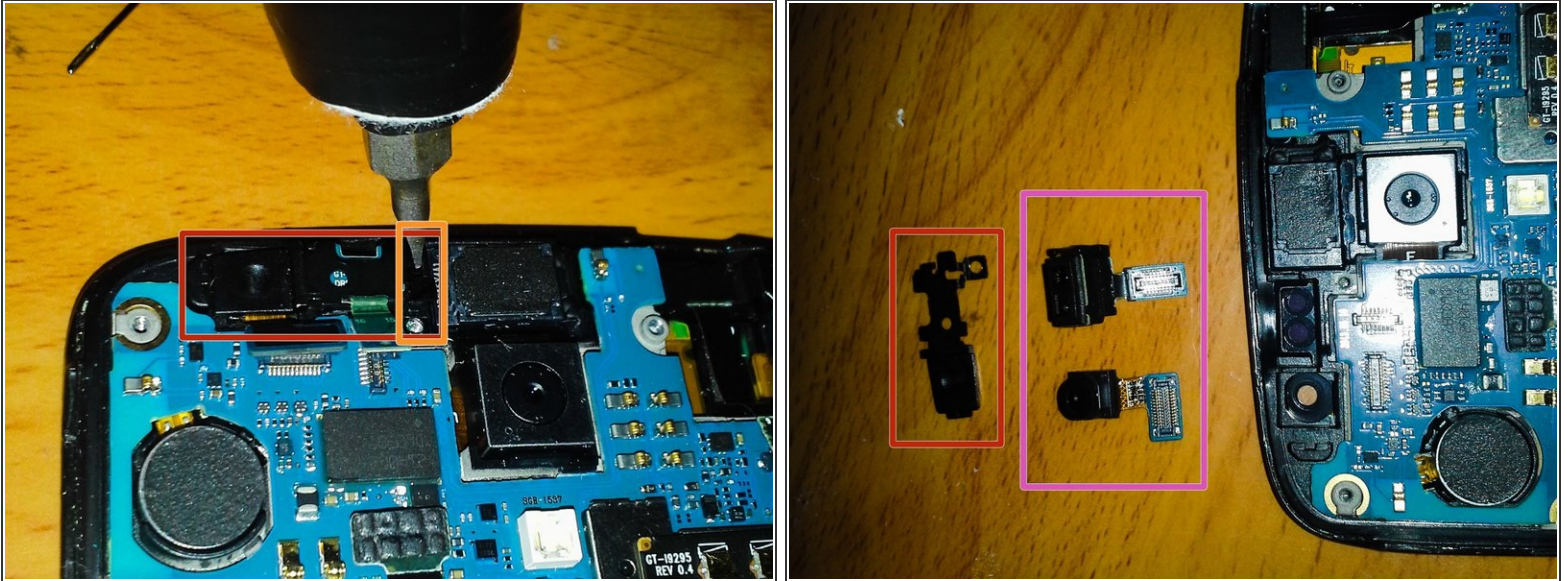
## Step 12 — Free the mother!



- Disconnect all cable connectors.
- SIM/SD Reader
- Digitizer
- Front Facing Camera
- Proximity Sensor
- LED Status Light/RGB Sensor Module

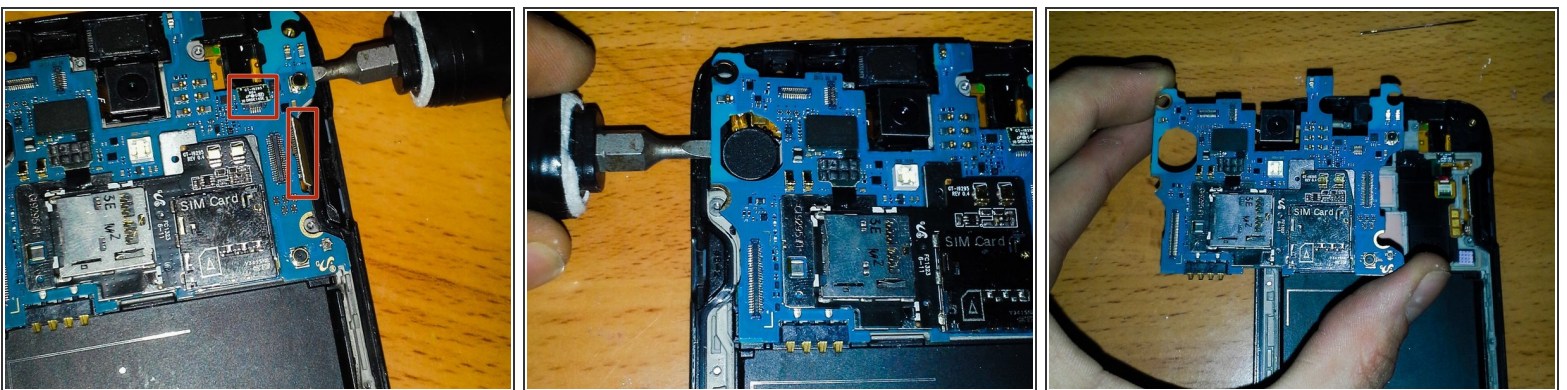


## Step 13 — Front camera and proximity sensor



- There is a (black) metal bracket holding down the Front Facing Camera and Proximity Sensor.
- Pry it off from the right side.
- Remove Proximity Sensor and Front Facing Camera.

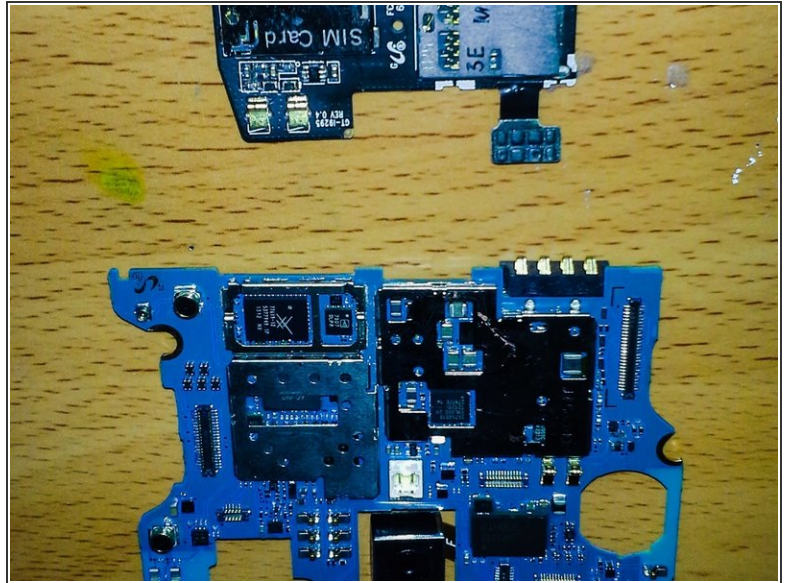
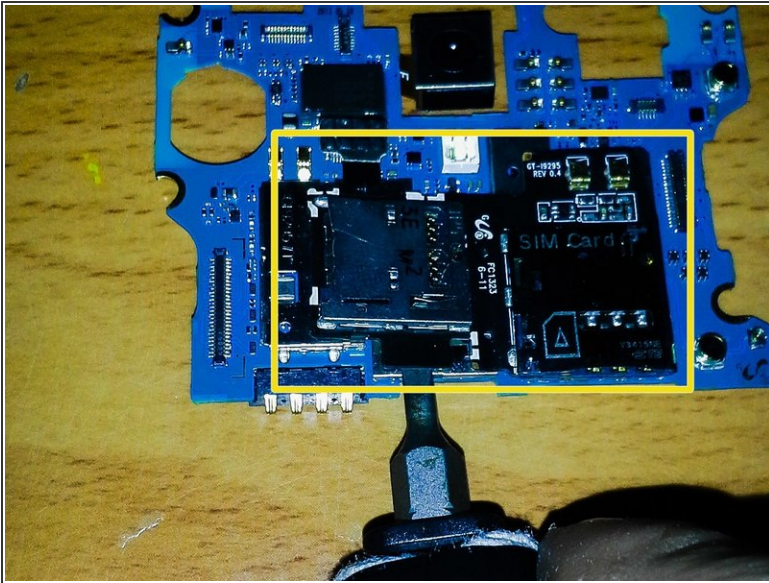
## Step 14 — Motherboard



- One side at a time, GENTLY pry the motherboard from the phone.
  - Do NOT snag/hit any remaining flex cables with the Motherboard as you remove it.
- ⚠ Only touch the motherboard on its edges to prevent ESD damage. (Electrostatic Discharge) It could potentially fry your motherboard.



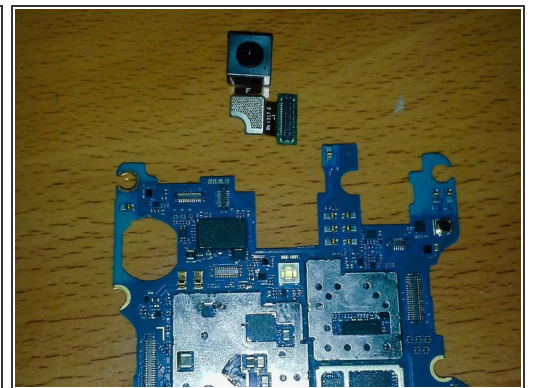
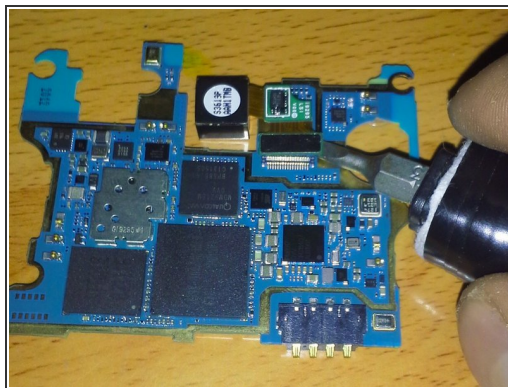
## Step 15 — SIM/SD Reader



⚠ Only remove this if you are actually replacing it! It doesn't come off or go back on easily.

- My SIM Reader is broke but, it is attached to the Micro-SD so I have to replace the whole Unit.

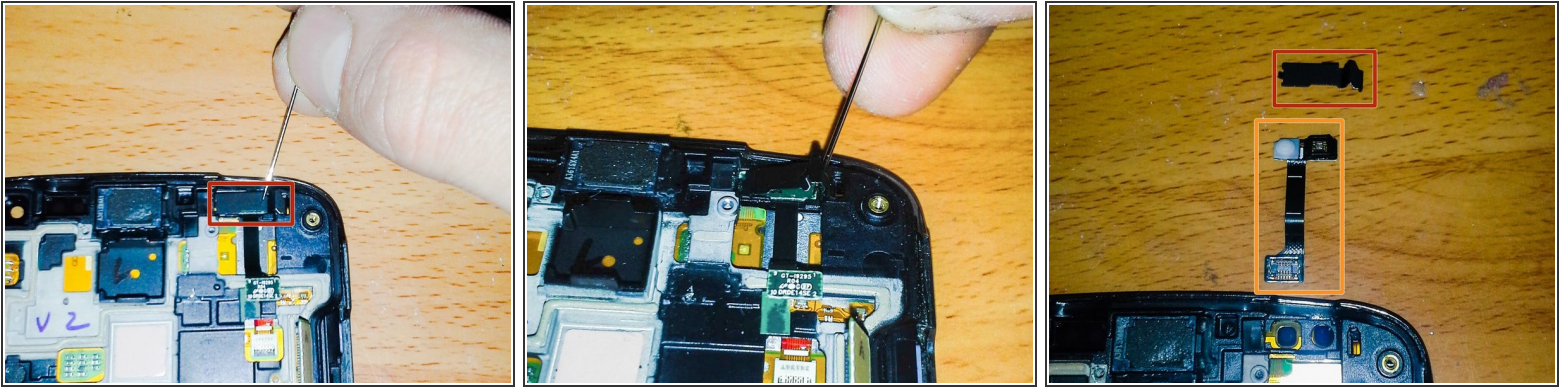
## Step 16 — Rear Facing Camera



- Turn the motherboard over and disconnect flex cable connector.
- ⓘ Set the motherboard off to the side in a safe spot until you reassemble your phone.

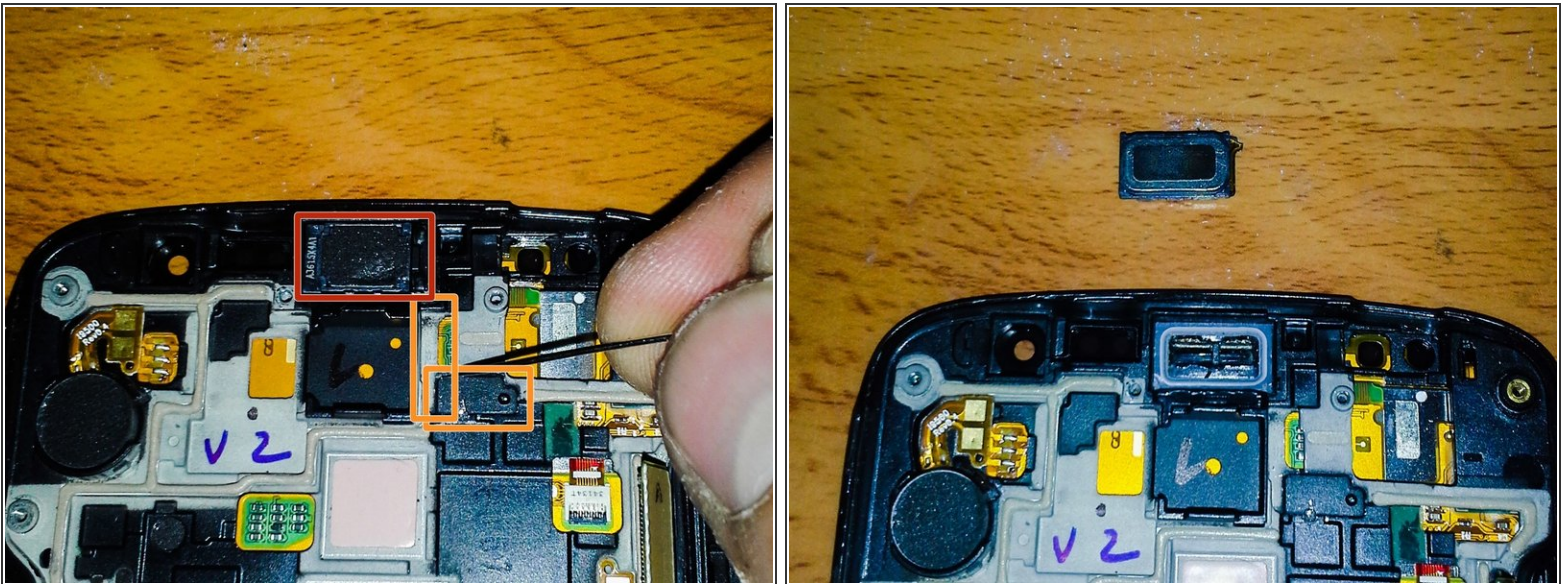


## Step 17 — LED STATUS LIGHT/RGB Sensor



- This component has a bracket holding it down as well, remove it the same way as the last one.
- Remove LED Status Light/RGB Sensor

## Step 18 — Earpiece Speaker

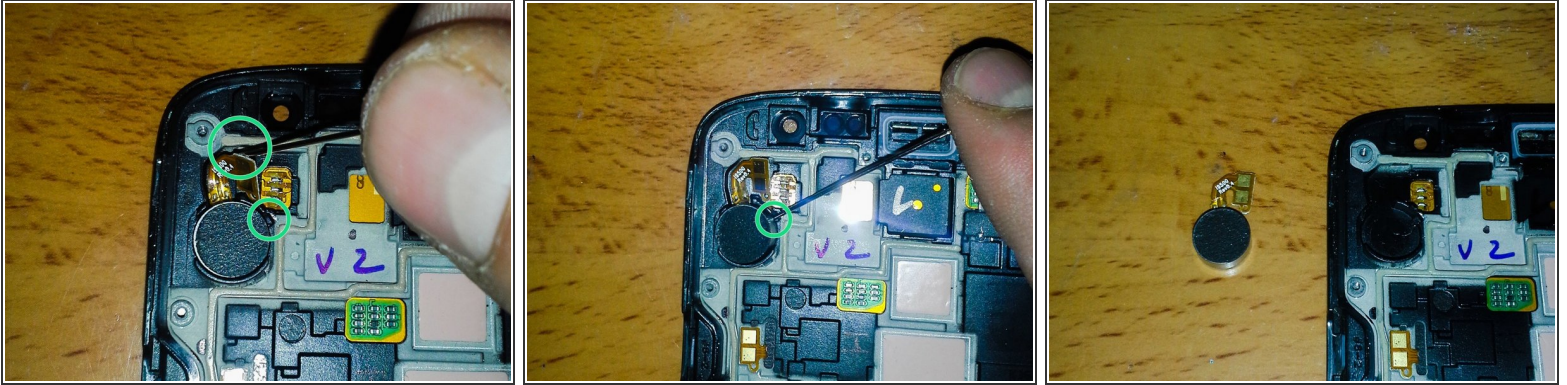


⚠ Broke my Earpiece Speaker. Ebay here I come!

- Proof as to why you need to be careful with flex cables.
- I would recommend using 2 prying tools on your Earpiece flex cable. The adhesive has a really strong bond to the phone. (the orange highlights where the flex cable should be)

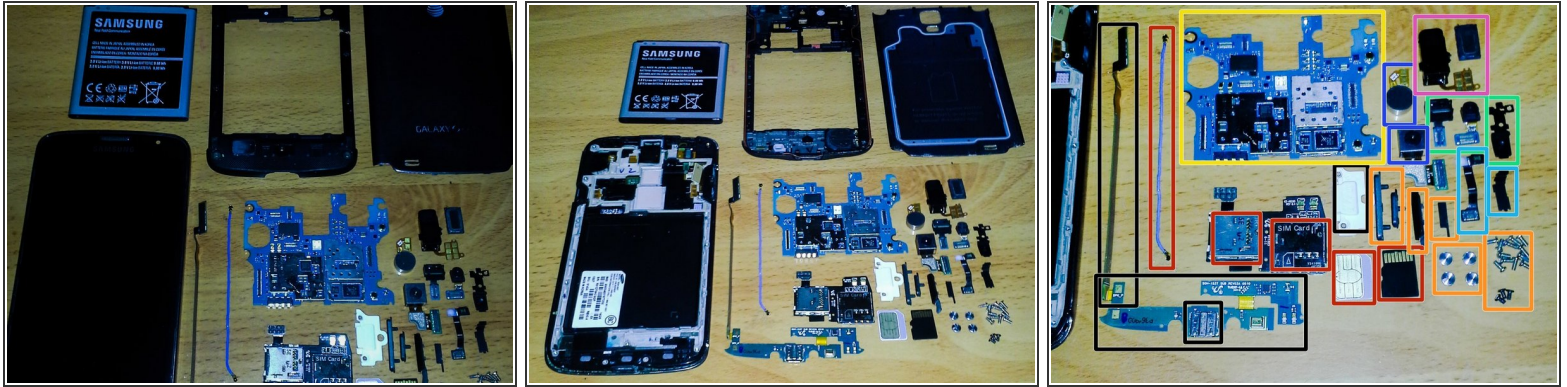


## Step 19 — VIBRATOR



- Look for the access slot under the flex cable AND the vibrator. Lot of adhesive under the vibrator.
- Remove vibrator.

## Step 20 — And thats a wrap!



- Daughterboard/USB Port/USB Protector/Flex Cable Connector.
- Antenna/SIM/SD Reader/SIM card/Micro-SD card.
- USB Water Cover/ Volume/Power Buttons/Screws and misc hardware
- Motherboard
- Front Facing Camera/Proximity Sensor/Bracket
- LED Status Light/RGB Sensor Module/Bracket
- Rear Facing Camera/Vibrator
- Headphone Jack/Earpiece Speaker

To reassemble your device, follow these instructions in reverse order.