



Kindle Voyage Ambient Light Sensor Replacement

The ambient light sensor is what lets you read...

Written By: Sean Yap



INTRODUCTION

The ambient light sensor is what lets you read in less-than-ideal lighting situations. It is attached to the motherboard near the battery and again at the top where it actually can get light from outside of the device.

TOOLS:

[Phillips #00 Screwdriver](#) (1)

[64 Bit Driver Kit](#) (1)

[iFixit Opening Tool](#) (1)

[Plastic Cards](#) (1)

[Tweezers](#) (1)

Step 1 — Back Panel



- Insert a plastic opening tool between the plastic panel shown on the device.
- Use the tool to pry the plastic away from the device.
- ⓘ There will be adhesive holding this piece of plastic to the device. You may have to pull pretty hard to get it separated.

Step 2



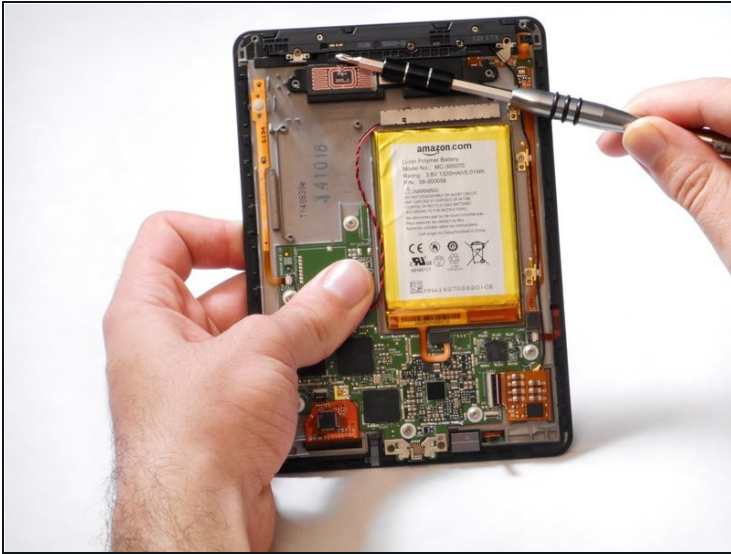
- Use an aluminum driver attached with a Phillips head size #00 to remove the four 3mm screws shown in the picture. For reassembly, note that the top two and bottom two screws are different sizes.

Step 3



- Once the screws are removed, the back panel can slide off the device.

Step 4



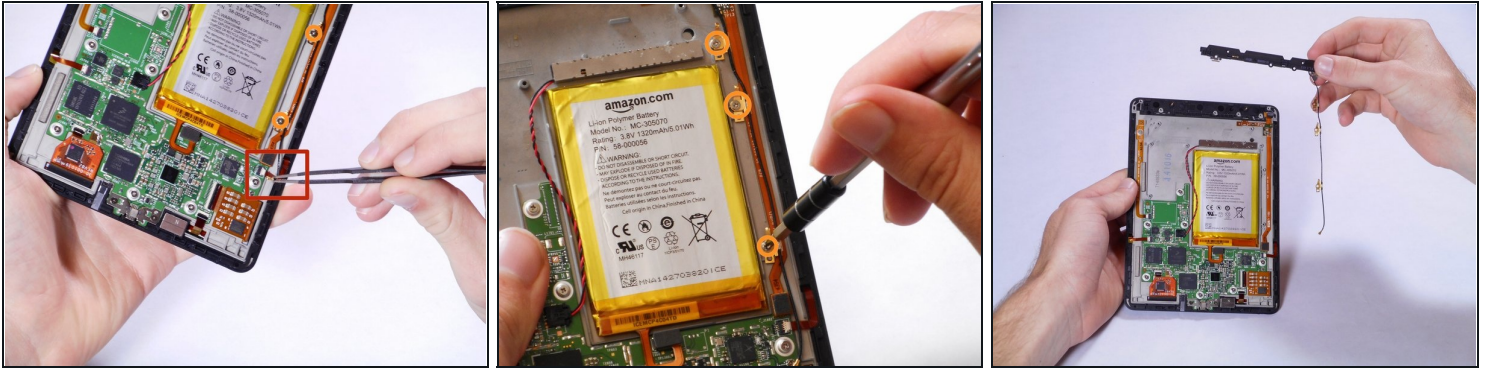
- Remove the magnetic component with the magnetic head of the aluminum driver.

Step 5 — Wifi Antenna



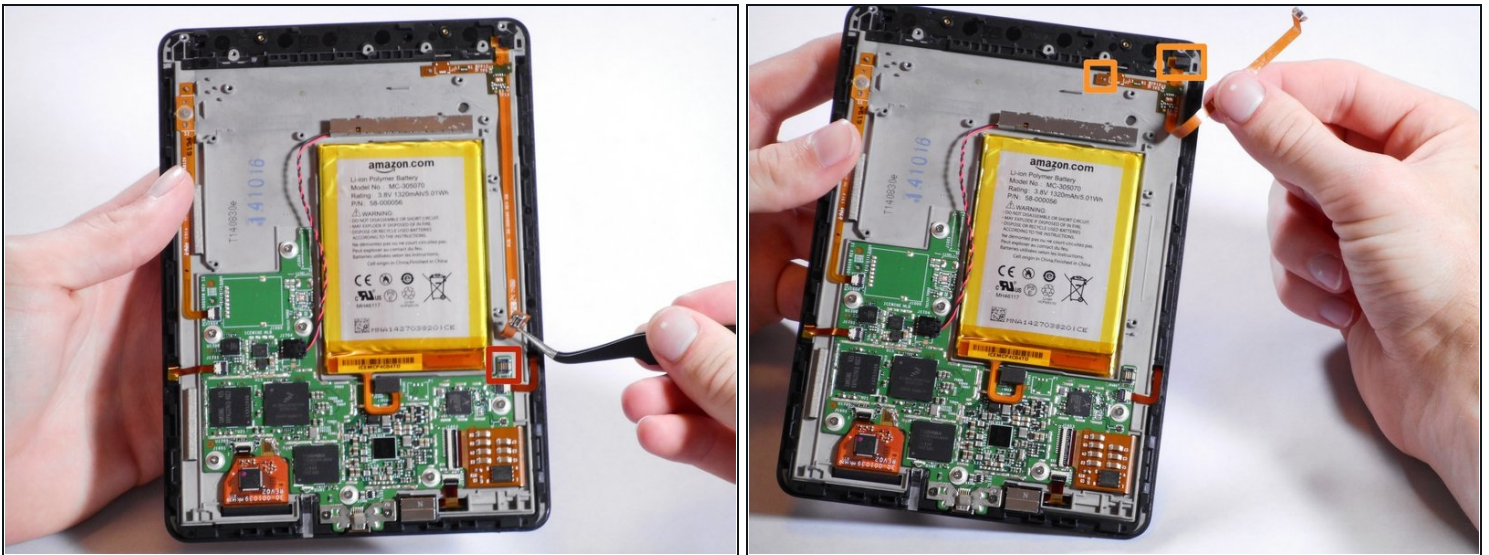
- Use an aluminum driver with Phillips head #00 to remove the four 3 mm screws shown in the picture.
- Use the same driver to remove the two 2.5 mm screws.

Step 6



- Using the [tweezers](#), undo the attached clip.
- Remove the three 3 mm screws holding down the rest of the antenna with an aluminum driver and the Phillips #00 head.
- You should now be able to simply take the WiFi bar off of the device.

Step 7 — Ambient Light Sensor



- Gently remove the connector to the motherboard using [tweezers](#).
- Continue to carefully pull the rest of the connector from the adhesive connecting it to the Voyage.
- Detach sensor from the top using fingers

To reassemble your device, follow these instructions in reverse order.