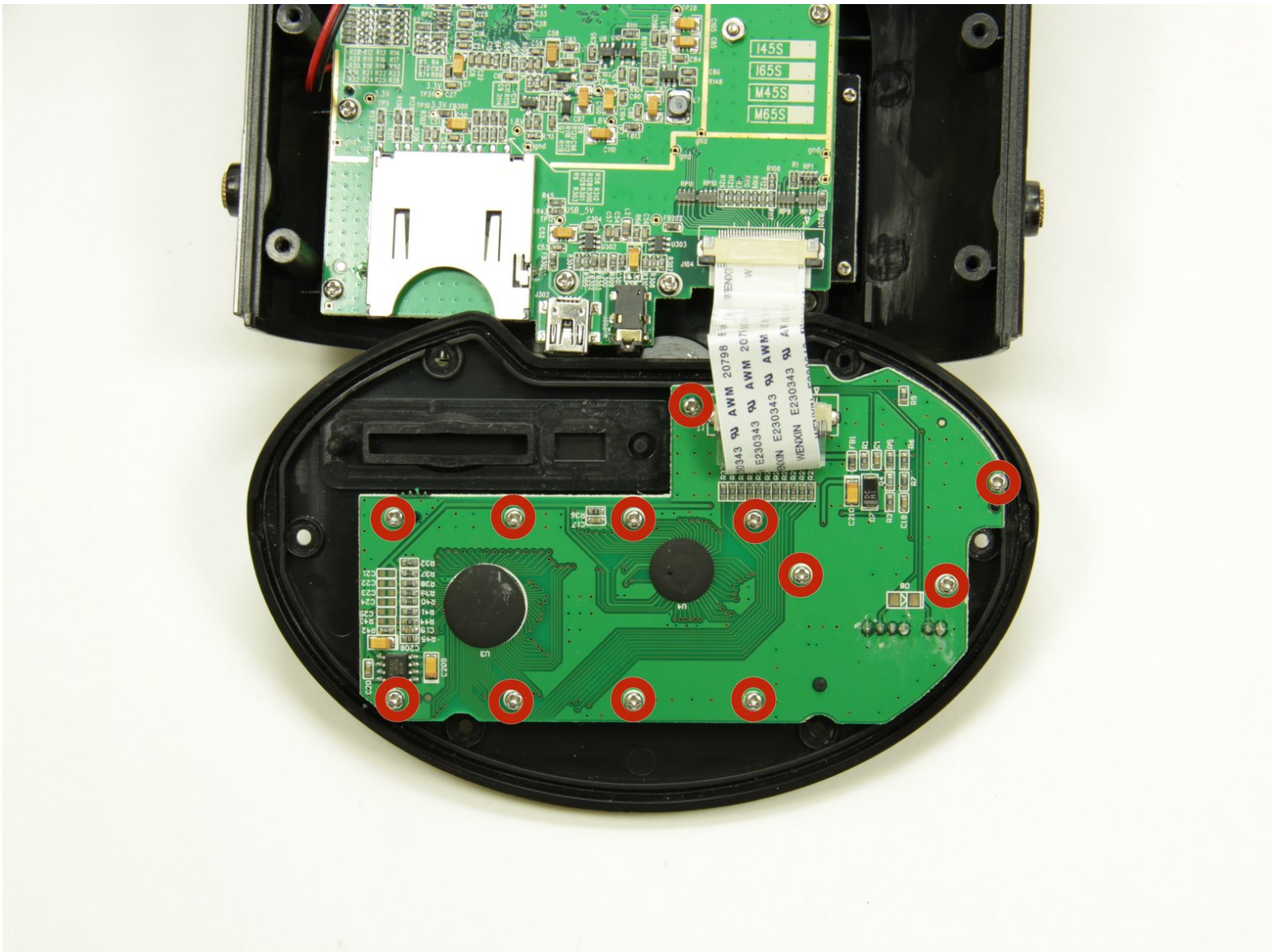




# Moultrie I45 GameSpy LCD Screen Replacement

Replacing the LCD Screen

Written By: Sean Hill



---

## INTRODUCTION

This guide outlines how to replace an LCD screen on the Moultrie I45 GameSpy camera

---



### TOOLS:

- [Phillips #000 Screwdriver](#) (1)
-

## Step 1 — Casing



- Using a Philips head screwdriver, remove the eight 6mm screws located at the bottom of the device.

## Step 2



- Remove the butterfly nut from the lid arm.

## Step 3



- Remove the lid-covering.

## Step 4



- Using a Phillips head screwdriver, remove the six 4mm screws from the face of the camera.

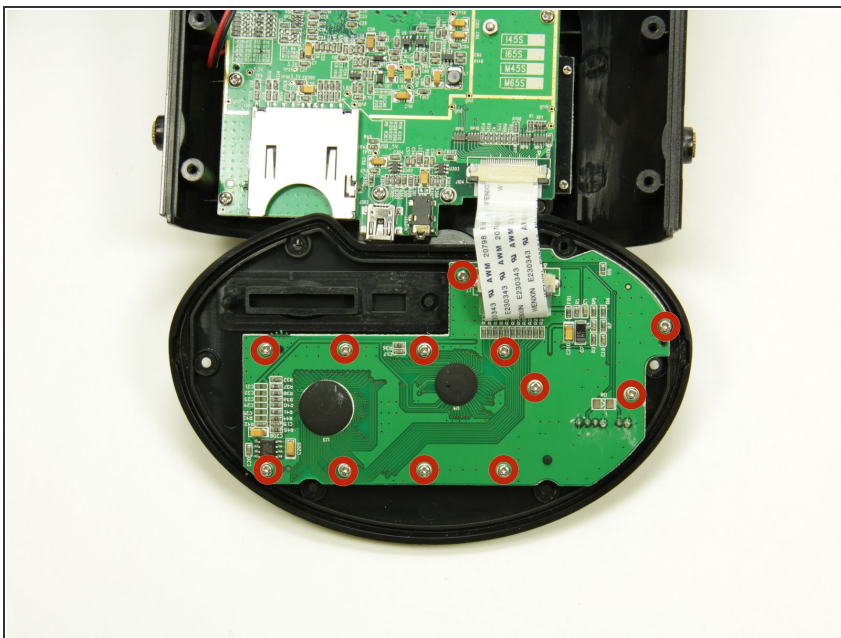


## Step 5



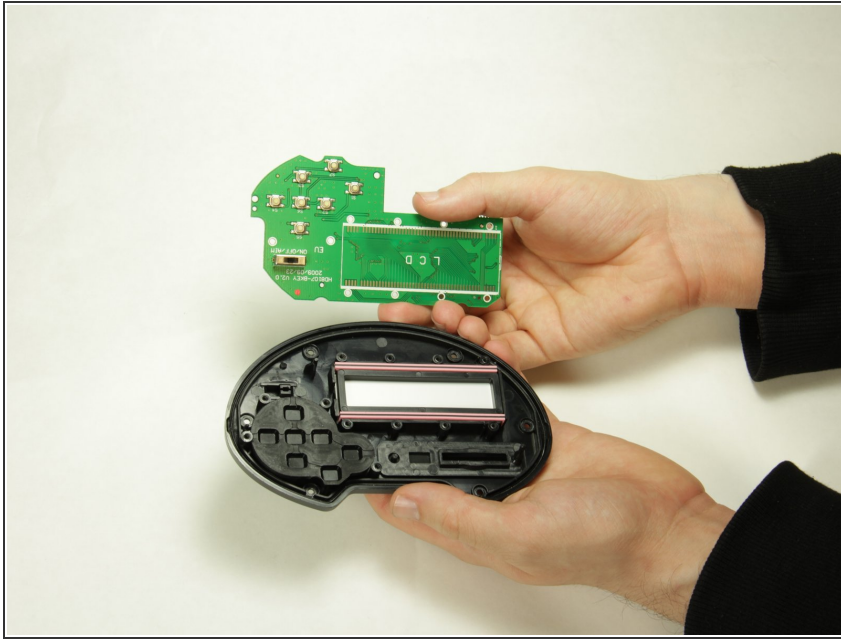
- Gently separate the two halves of the case.
- ⚠ The two halves are connected by a wire. Pulling too roughly can damage the wires and cause the camera to stop functioning.

## Step 6 — LCD Screen



- Using a Philips head screwdriver, remove the 12, 3mm screws from the board.

## Step 7



- Gently remove the circuit board from the face of the camera

## Step 8



- Remove the LCD screen.

To reassemble your device, follow these instructions in reverse order.