



Panasonic Lumix DMC-ZS25 Screen Replacement

How to replace your camera's screen, so you can look at the photos on the screen.

Written By: Abbas Khan



INTRODUCTION

These steps will guide to simply replace your camera's screen.



TOOLS:

- [iFixit Opening Tools](#) (1)
 - [Spudger](#) (1)
 - [Phillips #00 Screwdriver](#) (1)
-

Step 1 — Screen



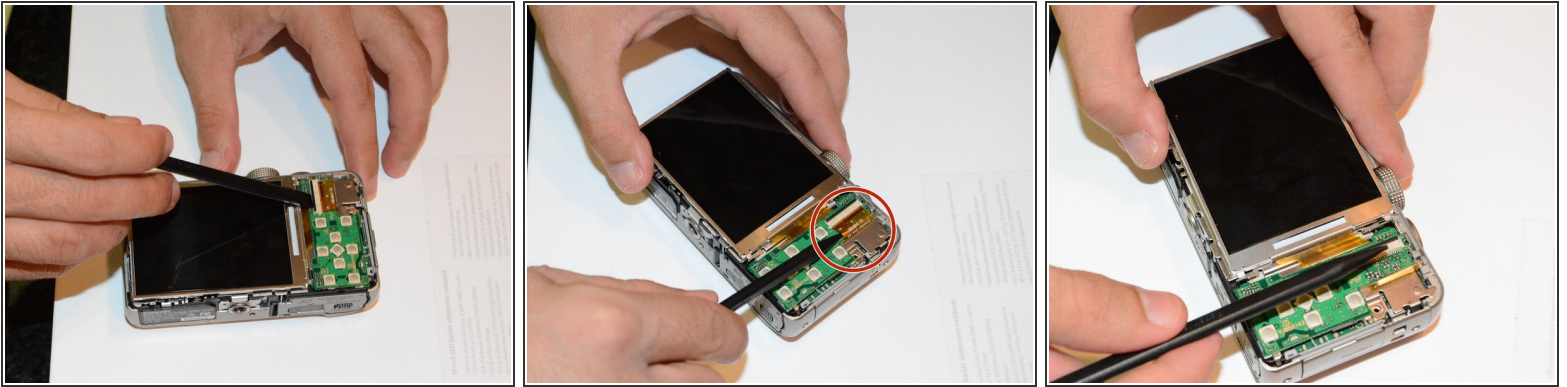
- Open the four 3.40 mm screws from the right and left sides of your Panasonic Lumix Camera.
- Remove the two 2.60 mm screws located next to the battery.

Step 2



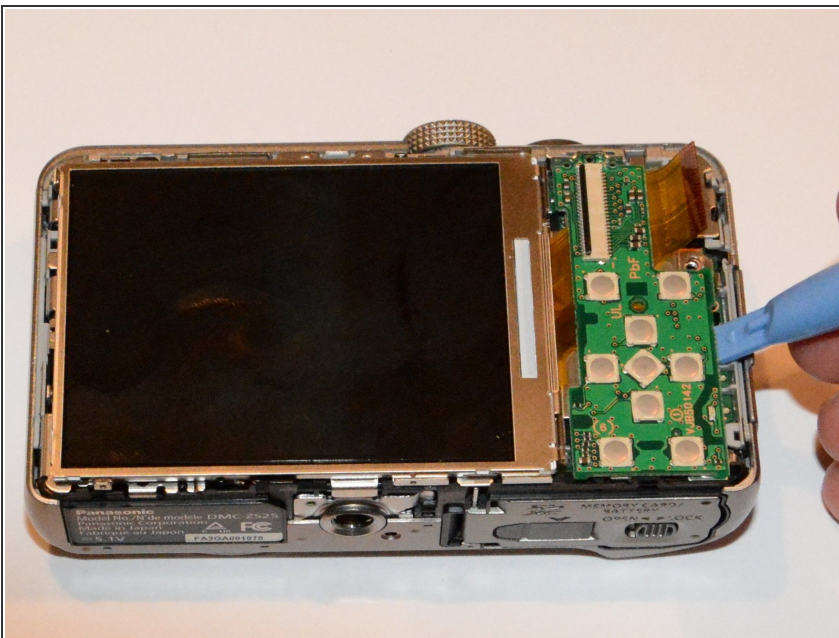
- Use the plastic opening tool to open the outer cover of your device from the HDMI port.
- ⚠ Open it carefully to avoid breaking the cover.

Step 3



- Use a spudger to carefully detach the ribbon cable without breaking it.

Step 4



- Use the plastic opening tool to lift and remove the buttons board as shown.

Step 5



- Carefully lift the screen using the plastic opening tool as shown.

To reassemble your device, follow these instructions in reverse order.