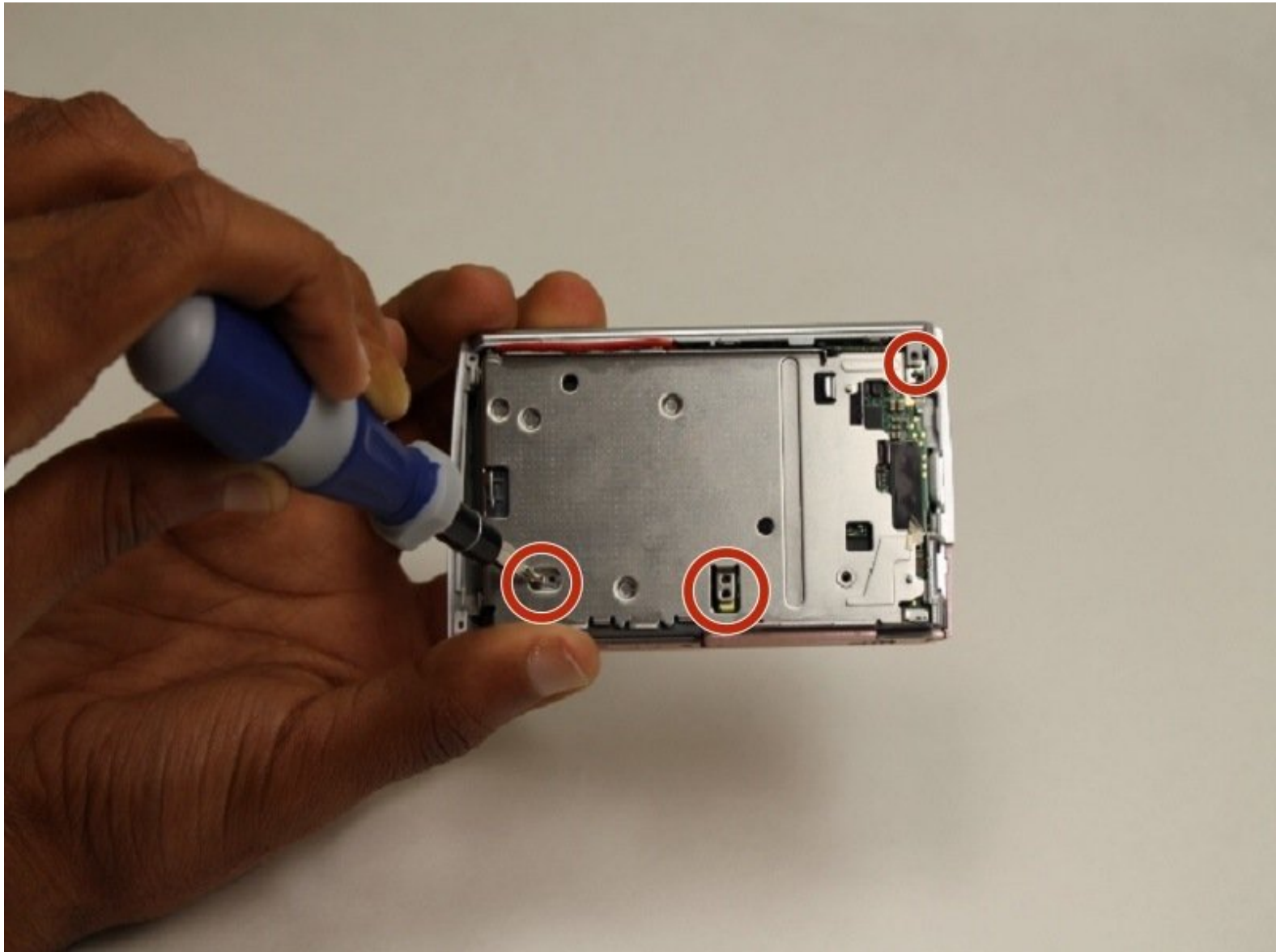




Sony Cyber-shot DSC-W510 Lens Zoom Unit Replacement

Replacing the lens zoom unit. Replacement unit costs about \$20.

Written By: kyle



INTRODUCTION

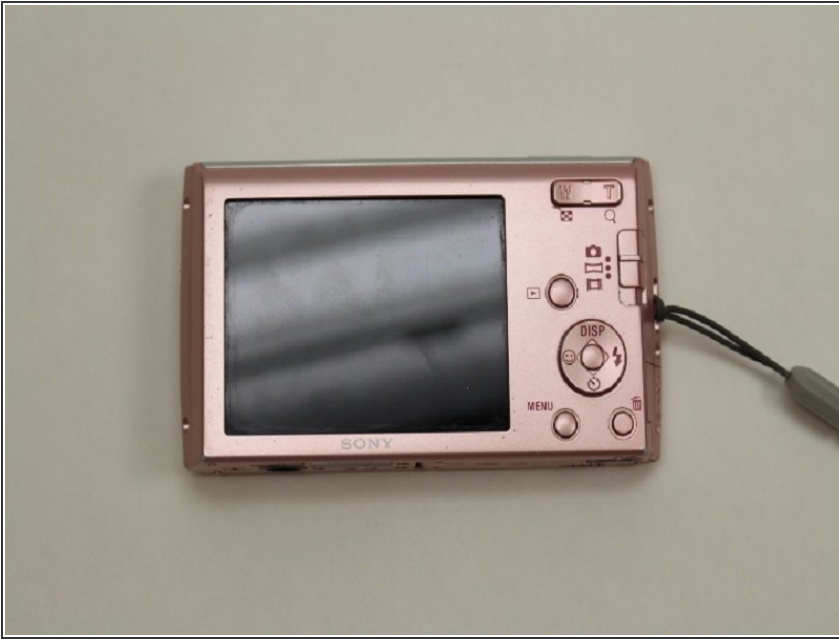
How to replace the lens zoom unit of a Sony Cyber-shot DSC-W510.



TOOLS:

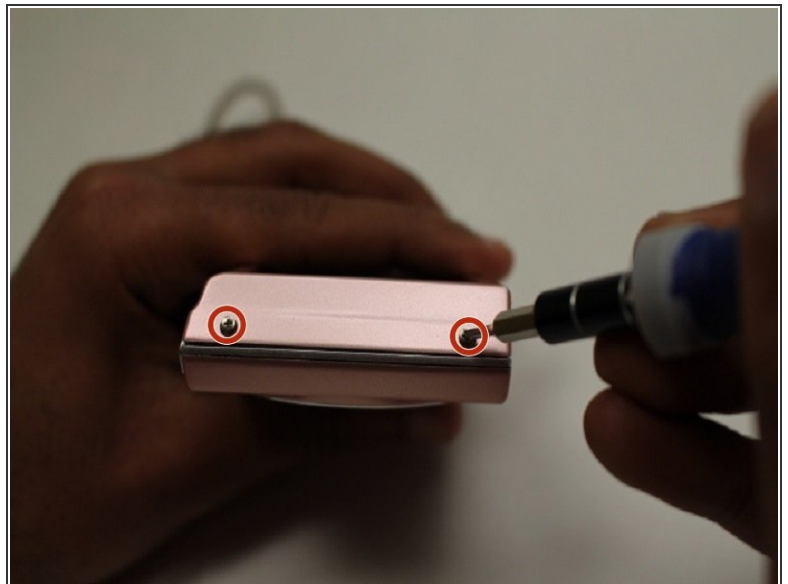
- [Phillips #00 Screwdriver](#) (1)
 - [iFixit Opening Tools](#) (1)
-

Step 1 — LCD Screen



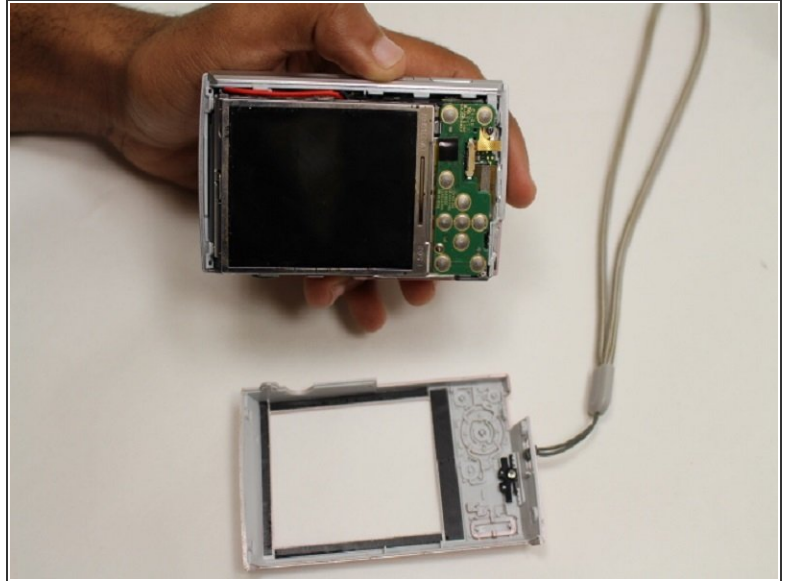
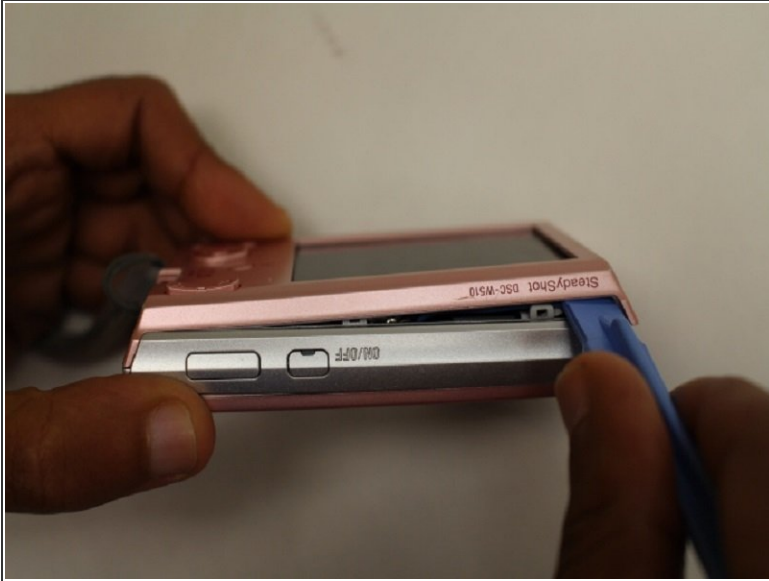
- Place the Sony Cyber-shot DSC-W510 on the magnetic project mat. This will help keep the small screws organized.

Step 2 — Unscrew



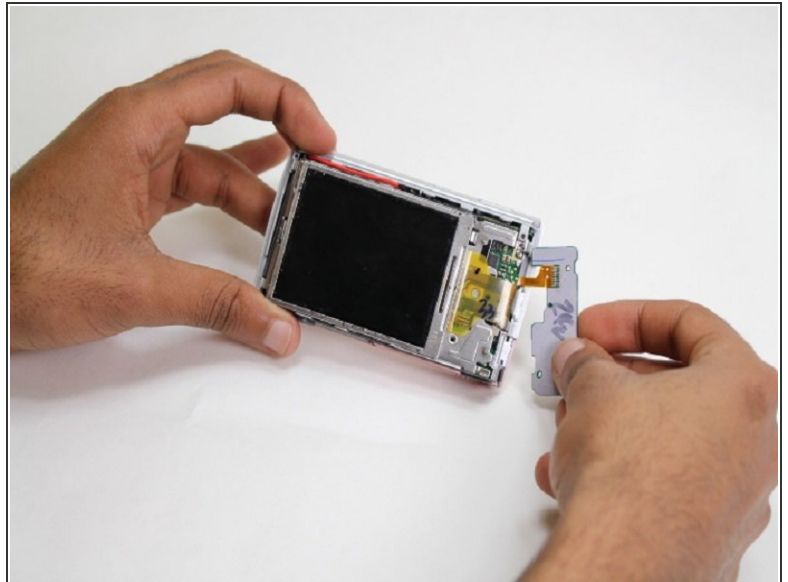
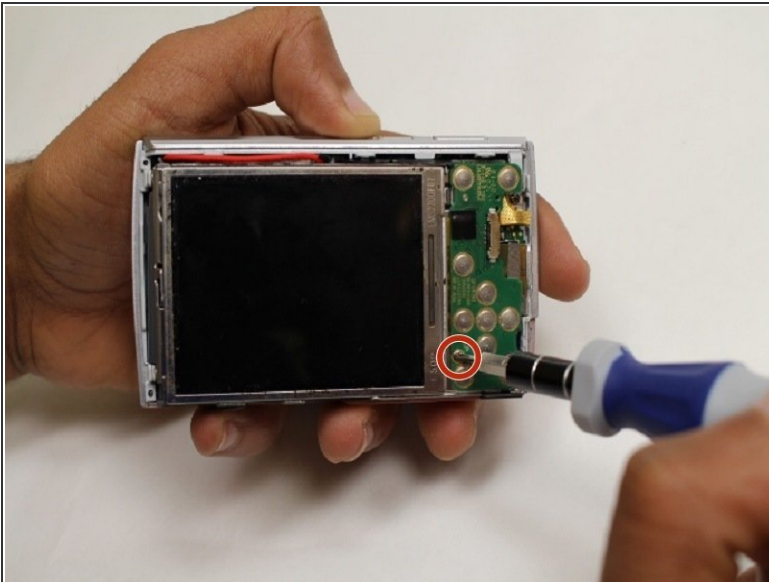
- Using the Phillips #00 screwdriver, unscrew the outside screws from the frame of the camera.
- There are five screws on the bottom of the camera and two on the side.
- ❗ If the screws are stripped, visit the [Removing a Stripped Screw Guide](#).

Step 3



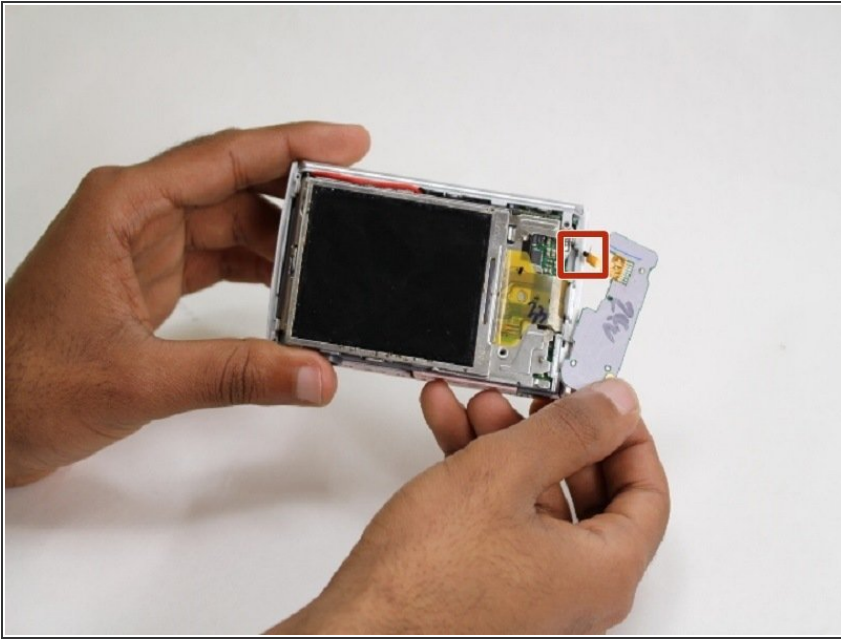
- Pry open the screen frame using a plastic opening tool.
- It may be necessary to start by prying at one end of the screen and moving around the edge of the screen frame, until it pops out.

Step 4



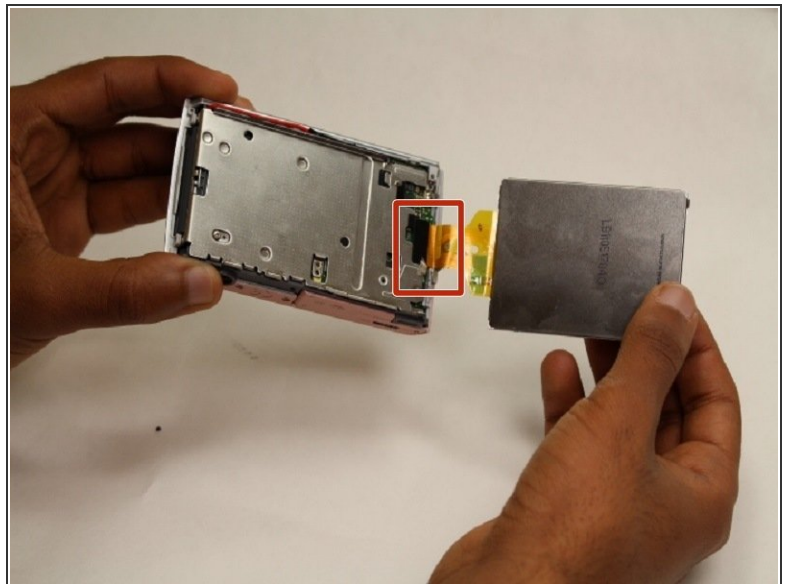
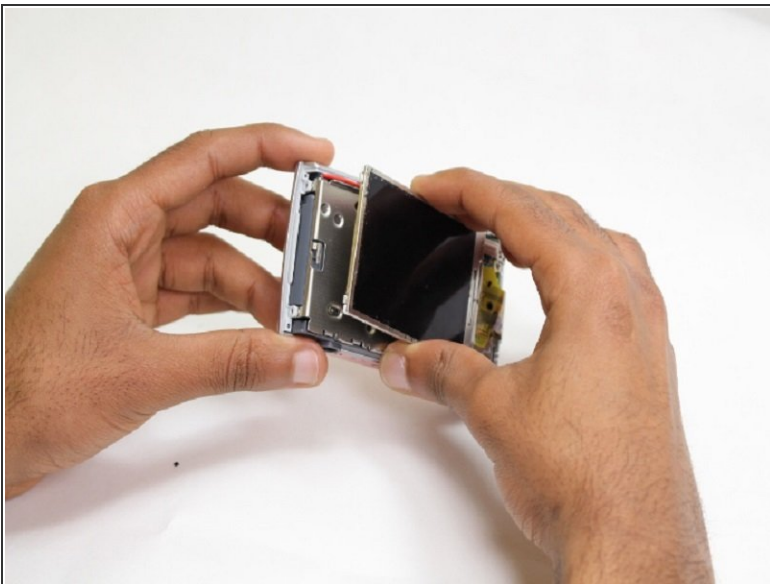
- Using the screw driver, unscrew the one screw on the control panel board.

Step 5



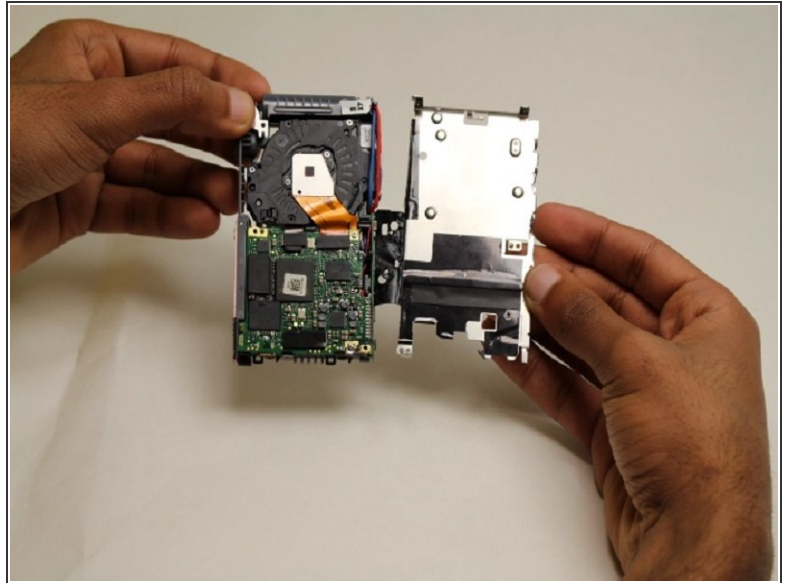
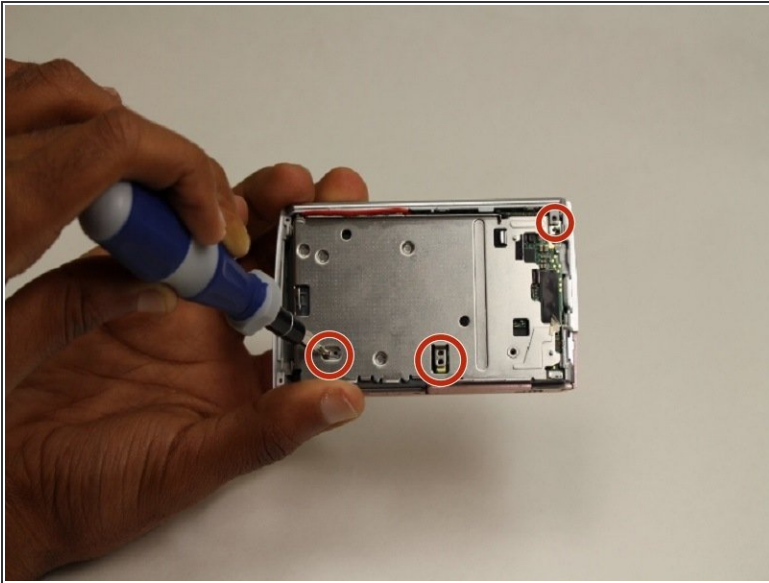
- Gently unplug the control panel from the motherboard outlet.

Step 6



- Using your hands, pry open the LCD screen from the metal board.
- Gently unplug the LCD screen from the motherboard.

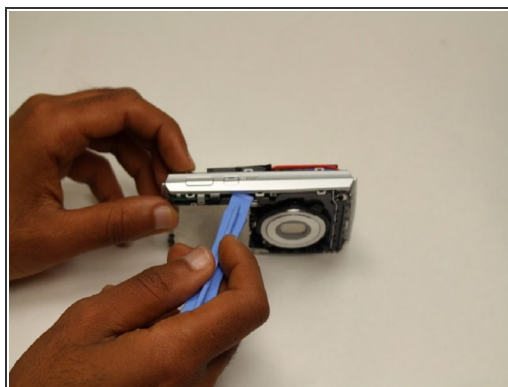
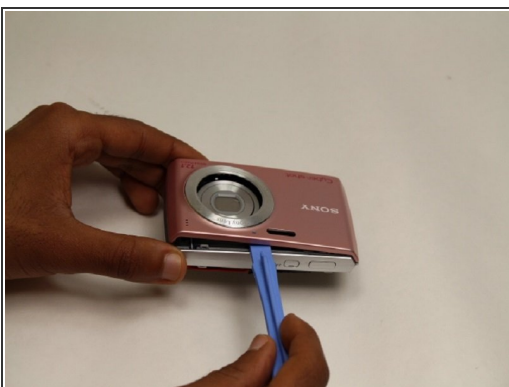
Step 7 — Lens Zoom Unit



- Remove the screws from the metal board using the Phillips #00 screwdriver.
- Pop apart the metal board using the plastic opening tool.
- Peel apart the black tape from the flash bulb.

⚠ Avoid touching the bulb as it will burn or shock if touched.

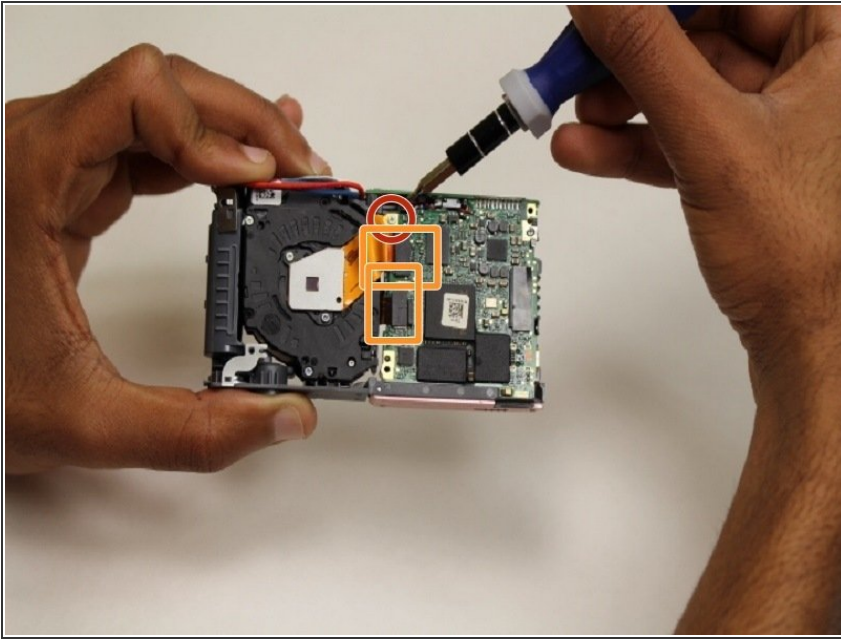
Step 8



- Pry open the remaining covers of the camera using the plastic opening tool.

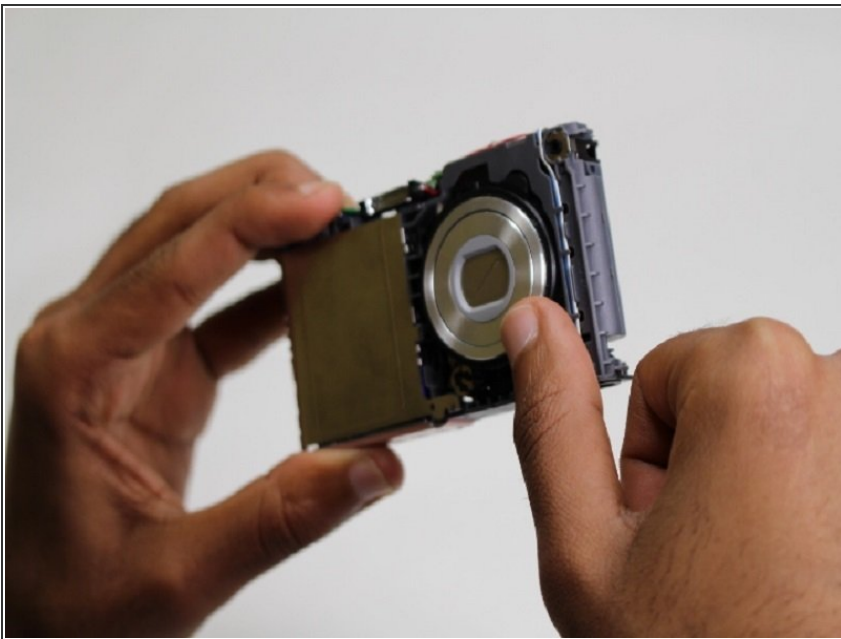
ⓘ Some parts may fall out during this process.

Step 9



- Unscrew the one screw from the motherboard.
- Disconnect the two links from the camera unit to the motherboard.

Step 10



- Pop out the lens zoom unit from the frame by using either your thumb or an opening tool.

To reassemble your device, follow these instructions in reverse order.