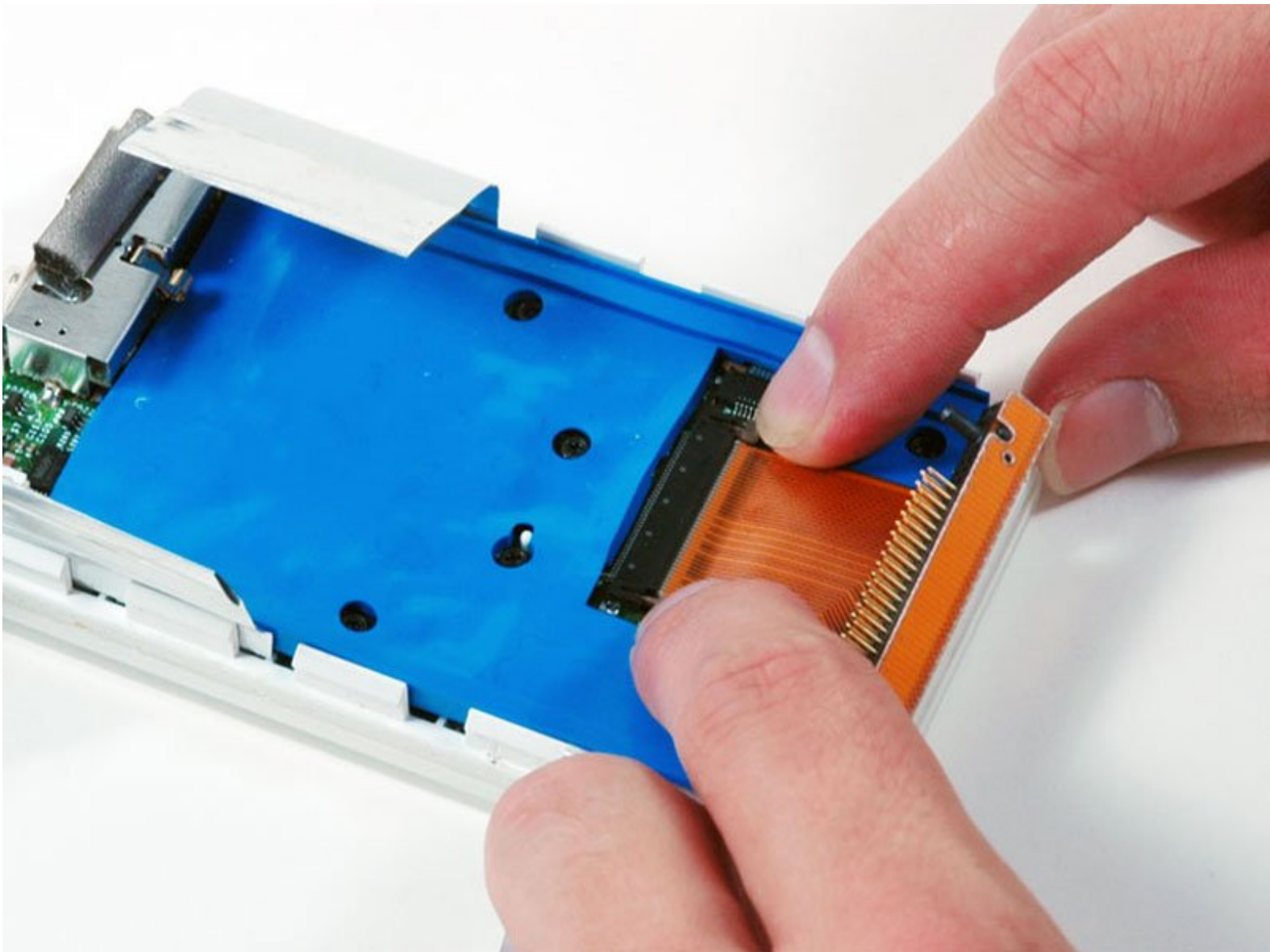




iPod 2nd Generation Hard Drive Cable Replacement

Written By: iRobot



INTRODUCTION

Connects the hard drive to the logic board.



TOOLS:

- [iFixit Opening Tools](#) (1)
-

Step 1 — Rear Panel



- ⓘ Before opening your iPod, ensure that the hold switch is in the locked position.

Step 2



- ⓘ Opening the iPod can be challenging. Don't get discouraged if it takes a few tries before the iPod is opened.
- Insert a plastic iPod opening tool in the seam between the white plastic front and metal back of the iPod. Once you've inserted the tool, run it along the seam to free the five tabs holding the iPod together.

Step 3



- Continue to run the opening tool along the side of the case until all five tabs have been released.

Step 4



- Work around the corner of the iPod and release the two tabs holding the iPod together near the dock connector.

Step 5



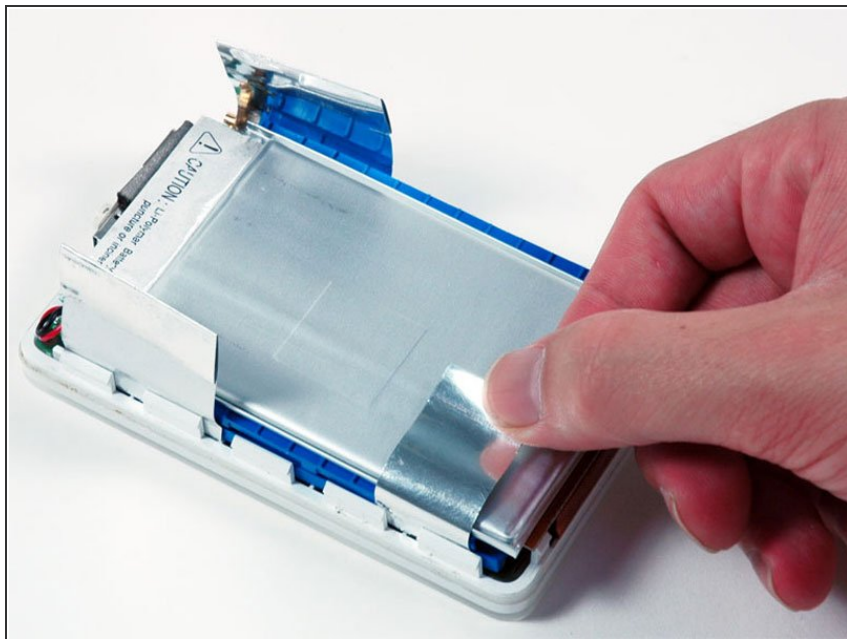
- Free the five tabs holding the iPod together on the other side. You may be able to free the tabs by gently wiggling the front panel of the iPod.

Step 6



- Lift the rear panel away from the iPod, making sure it doesn't catch on the headphone jack.

Step 7 — Hard Drive



- Peel up the metallic tape attached to the top of the battery.

Step 8



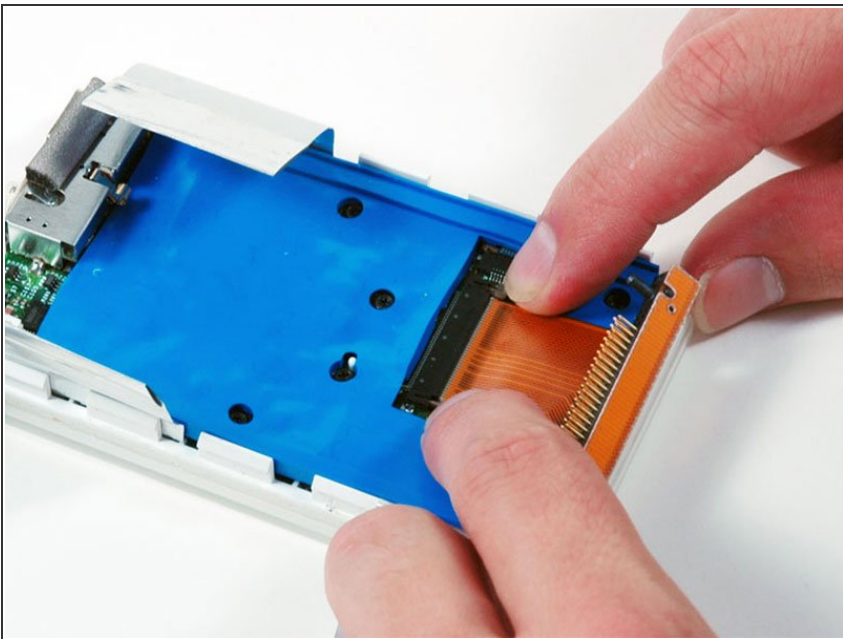
- Lift the battery up from the hard drive and lay it next the the iPod (it is still connected to the logic board).

Step 9



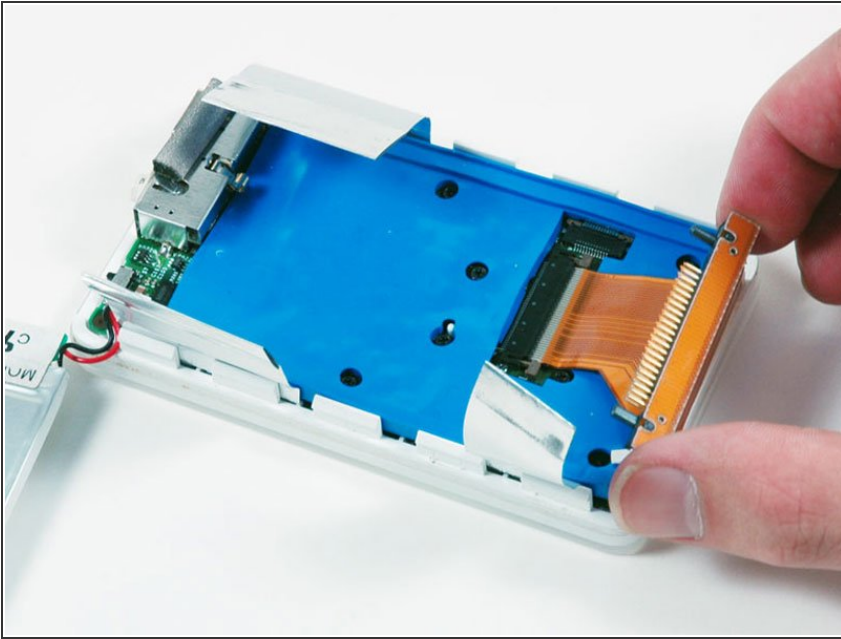
- Carefully disconnect the orange ribbon cable from the hard drive.
- If the cable doesn't come free easily, it may be helpful to gently wiggle the cable from side to side.
- Lift the hard drive out of the iPod.

Step 10 — Hard Drive Cable



- ⓘ For the following step, you only need to move the locking bar about 2 mm. Pushing too hard or too far will damage the connector.
- Loosen the connector by pulling the brown locking bar toward the hard drive cable using the tips of your fingers.

Step 11



- Slide the hard drive cable out of its connector.

To reassemble your device, follow these instructions in reverse order.