



Aiptek Pocket DVII 1.3M LCD Lens Assembly Replacement

If our lens replacement guide didn't resolve the problem, follow this guide to replace the lens assembly.

Written By: Gyoza Aba Hivatal





TOOLS:

- [Essential Electronics Toolkit](#) (1)
-

Step 1 — Lens Assembly



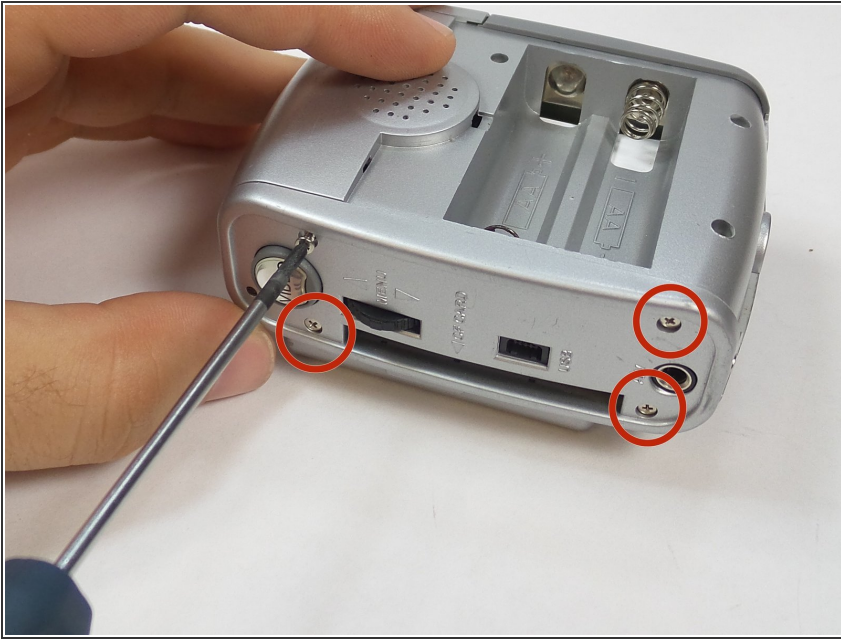
- Remove the battery cover.
- Remove the batteries.

Step 2



- Unscrew the three 4mm screws from the battery side of the device. Use a Phillips screw driver.

Step 3



- Remove the four screws from the back side.

Step 4



- Remove the sticky black dots.
- Remove the hidden screw.

Step 5



- Remove the two screws from the top side of the device.
- Remove the two screws from the bottom side of the device.

Step 6



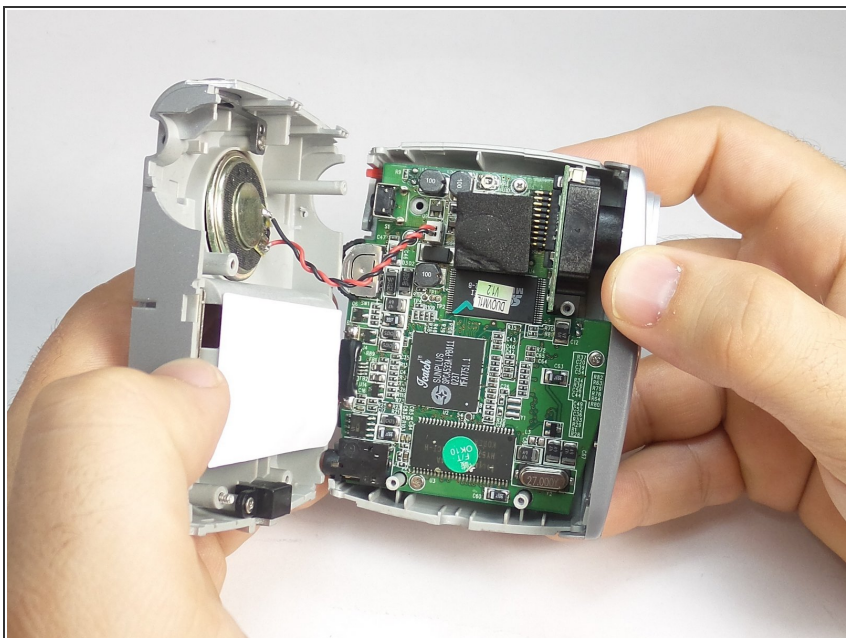
- Remove the rear cover.
- ⚠ Be careful not to lose the spring inside.

Step 7



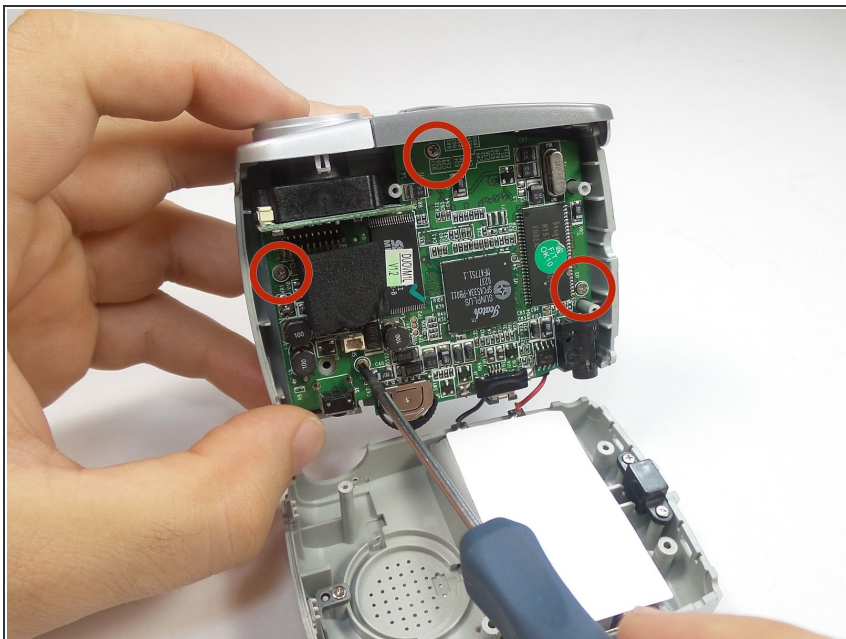
- Pull back the front cover so that you can dislodge the side cover.

Step 8



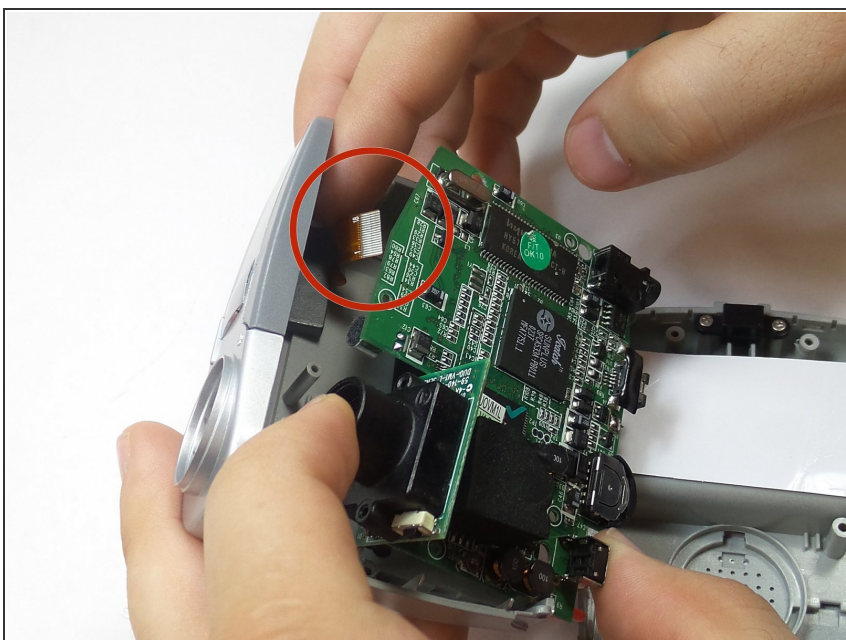
- Unfold the device and be careful not to tear the black and red power supply wires.

Step 9



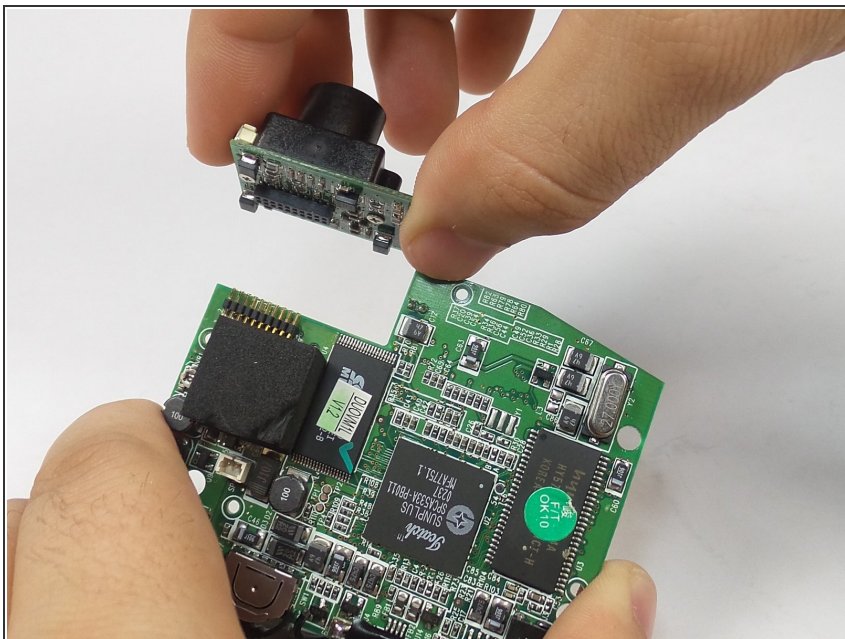
- Remove the four screws from the motherboard.

Step 10



- Take out the motherboard while disconnecting the flip screen's cable from underneath.

Step 11



- Replace the Lens Assembly board.

⚠ Be careful not to damage any of the pins. Pull the board linearly.

To reassemble your device, follow these instructions in reverse order.