



Panasonic Lumix DMC-ZS25 Power Button Replacement

How to Replace Your Panasonic Lumix DMC - ZS25 Power Button

Written By: Abbas Khan



INTRODUCTION

If your Panasonic Lumix DMC - ZS25 is not turning on because of the power button, use this guide to safely open the camera and replace the button.

As the camera is used more often, the power button can begin to fail due to the constant use of it.

Make sure the new power button is of the right size to ensure a successful replacement.

Before using this guide, make sure the camera is unplugged from any connection and inspect the camera for any defects or loose wiring.



TOOLS:

- [Tweezers](#) (1)
 - [iFixit Opening Tools](#) (1)
 - [Phillips #00 Screwdriver](#) (1)
 - [Spudger](#) (1)
-

Step 1 — Unscrewing your Panasonic Lumix



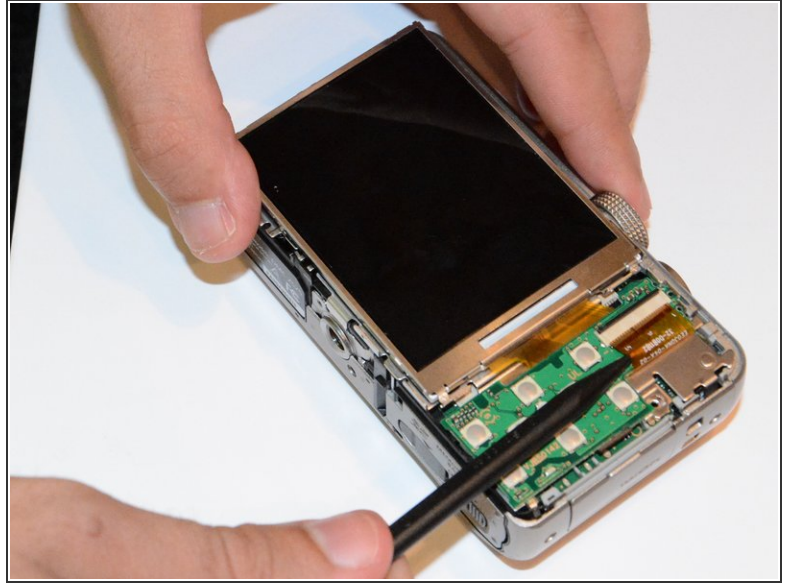
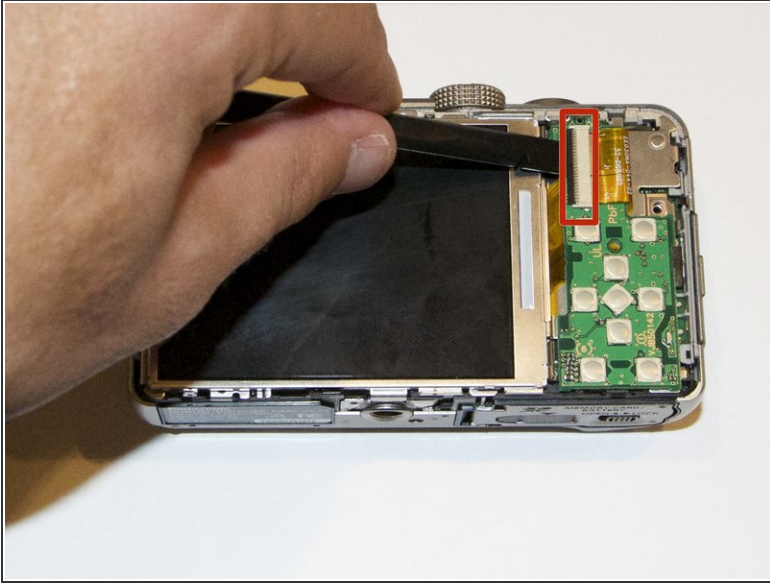
- Open the four 3.40 mm screws from the right and left sides of your Panasonic Lumix Camera.
- Remove the two 2.60 mm screws located next to the battery.

Step 2



- Use the plastic opening tool to open the outer cover of your device.
 - The easiest place to open your device is from the HDMI port.
- ⚠ Open it gently to avoid breaking the cover.

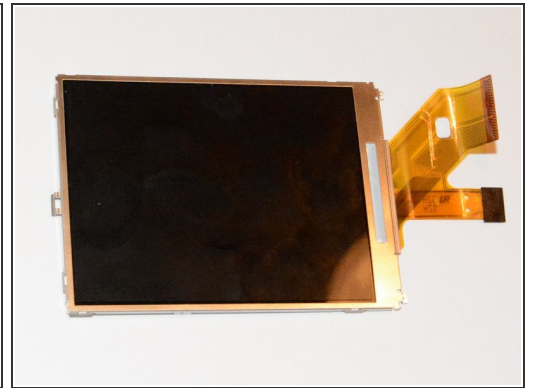
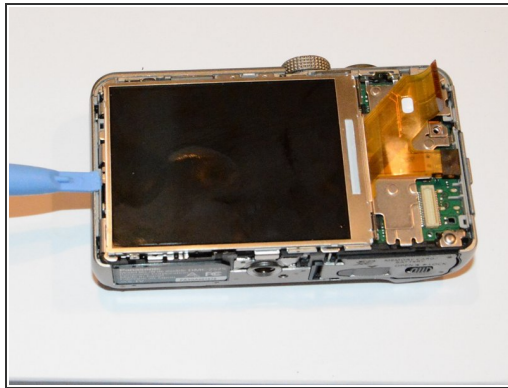
Step 3



- Use a spudger to detach the ribbon cable.

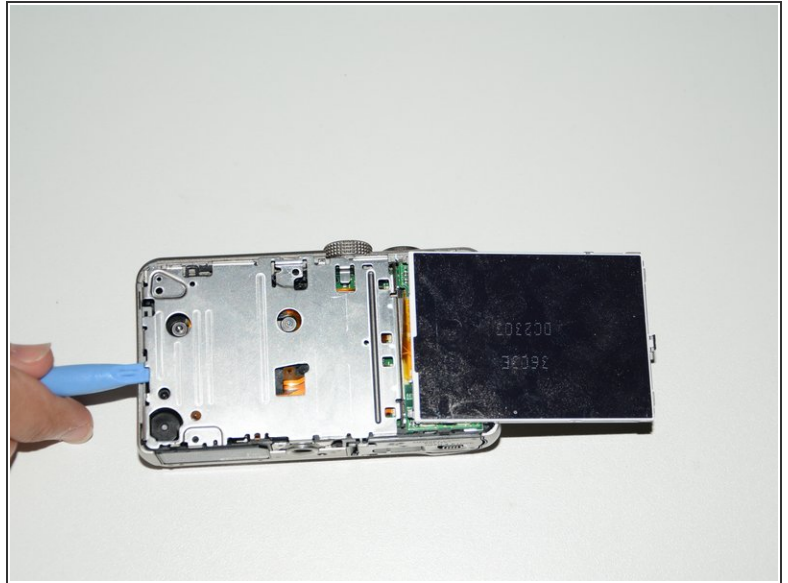
⚠ Be careful when you use the spudger because you do not want to break the the ribbon.

Step 4



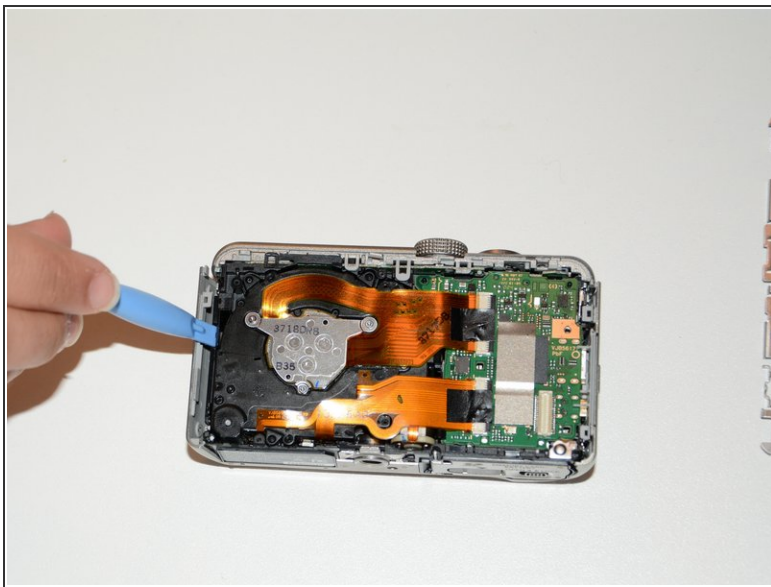
- Remove the button board using the plastic opening tool.
 - Remove the screen. Lift the screen from the right hand side.
- i** After your hear a "click" sound, you have successfully opened the screen.

Step 5



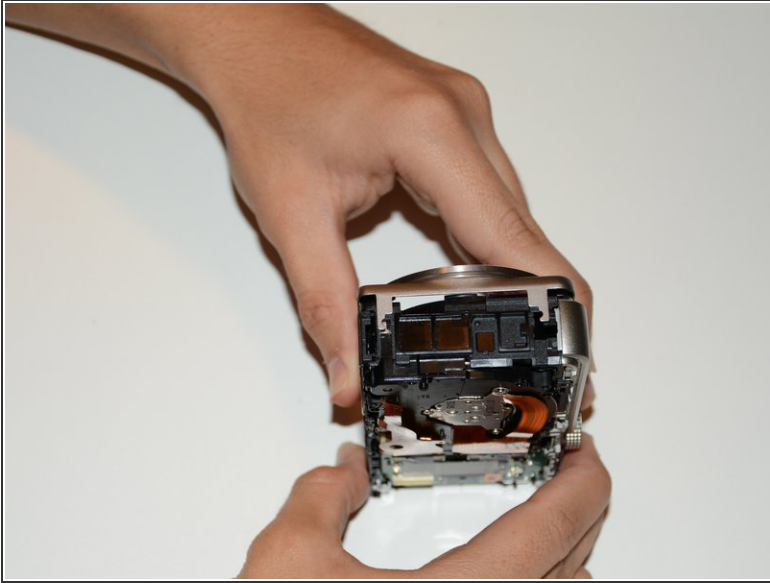
- Remove the two black screws that are located beneath the screen.
- Lift the metal cover using the plastic opening tool.

Step 6



- Use the plastic opener to remove the side covers.

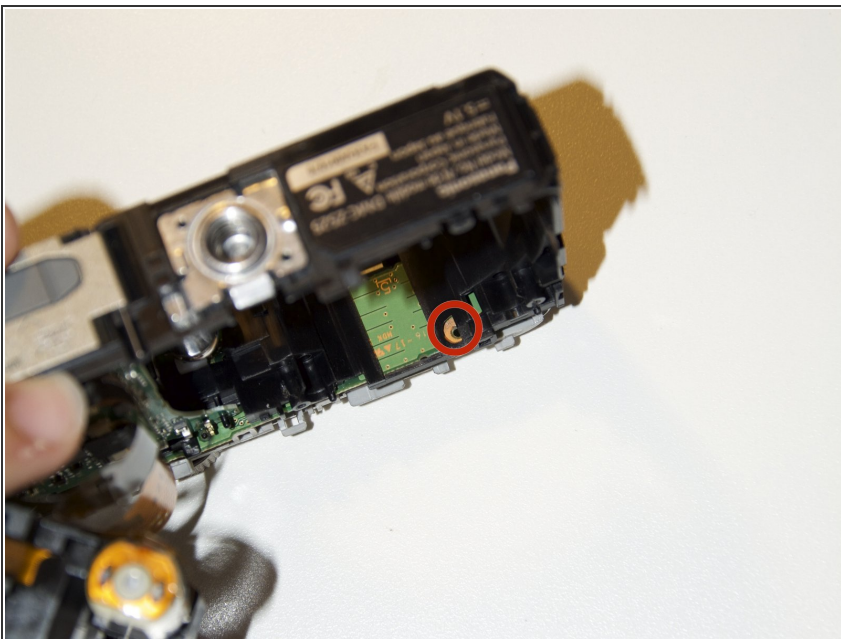
Step 7



- After removing the side covers, you will be able to take away the front cover with your hands.

⚠ Do not apply too much pressure on the outer cover of your device to avoid damage.

Step 8



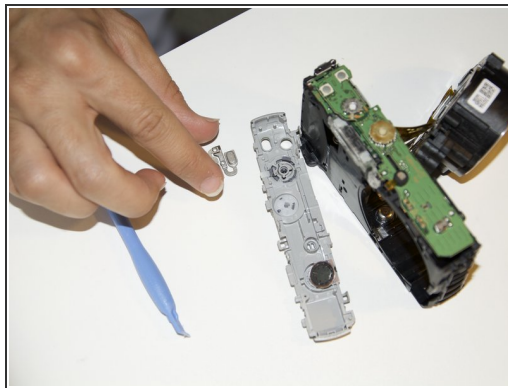
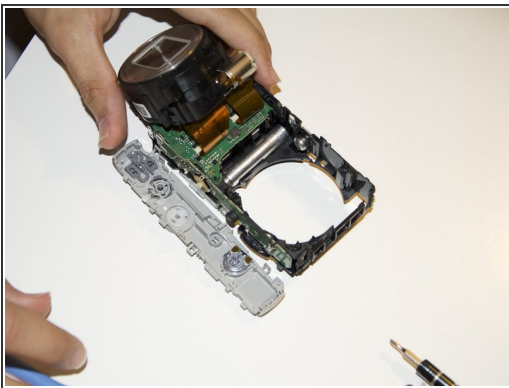
- To release the top cover of the camera, you need to open the 3.70 mm screw shown in the picture.

Step 9



- Remove the top cover using the plastic opening tool.

Step 10



- After removing the top cover of the camera, you will be able to easily remove the power button with your hand.

To reassemble your device, follow these instructions in reverse order.