



Canon PowerShot G11 LCD Screen Replacement

Replacing the LCD screen of your Canon PowerShot G11 LCD.

Written By: Pablo Martinez



INTRODUCTION

If the LCD screen of your Canon PowerShot G11 LCD is cracked or has stopped working you will need to replace it.

TOOLS:

- [Phillips #00 Screwdriver](#) (1)
 - [iFixit Opening Tools](#) (1)
 - [Tweezers](#) (1)
-

Step 1 — LCD Screen



- Remove the two 3.10mm Phillips #00 screws from the LCD case.

Step 2



- Open the LCD screen and turn it so the screen is facing the bottom of the camera, the screw is on the bottom of the LCD screen.
- Remove the 3.10mm Phillips #00 screw from the bottom end of the LCD screen.

Step 3



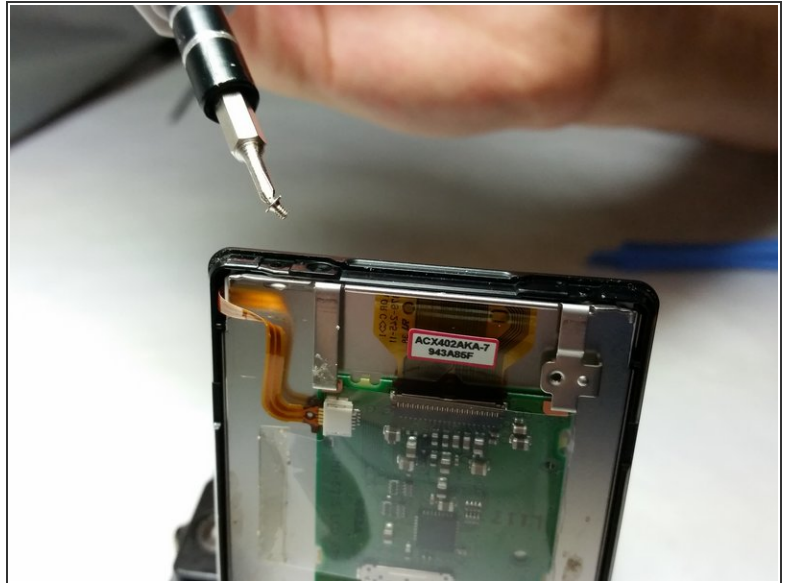
- Turn the LCD so that the screen is facing the top of the camera, the screw you need is on the bottom of the LCD screen.
- Remove the 3.10mm Philips #00 screw.

Step 4



- Use the plastic opening tool on the indent at the top of the LCD screen to pop off the LCD case.

Step 5



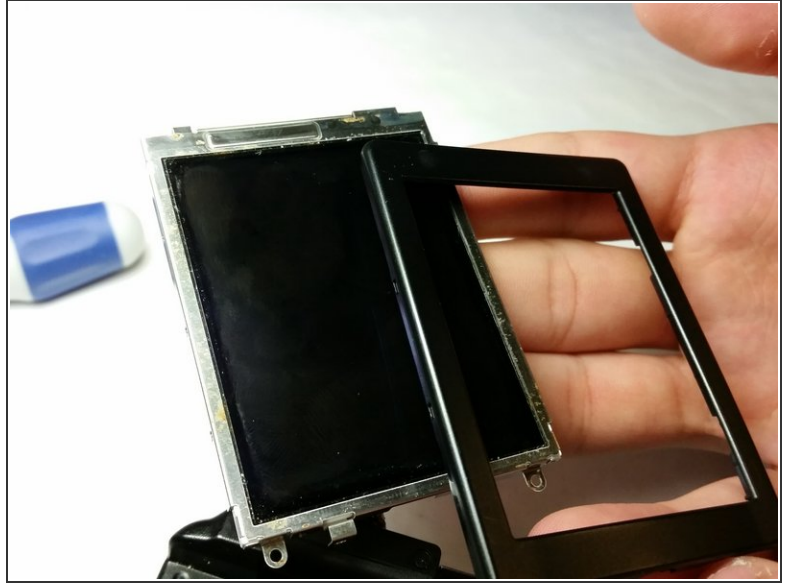
- Remove the 2.22mm Phillips #00 screw that is located next to the indent handle.
- ⓘ When the top screw is removed the small metal bracket will fall out, when reassembling the LCD screen remember to put it back on.

Step 6



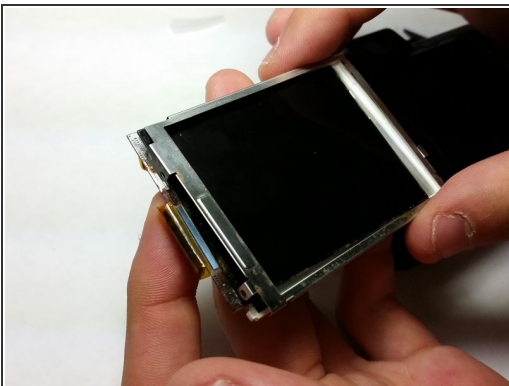
- Once the back panel is off remove the two 3.13mm Philips #00 screws.
- ⓘ There are magnets next the screws so when you reassemble the LCD screen make note of this, they will move the screws.

Step 7



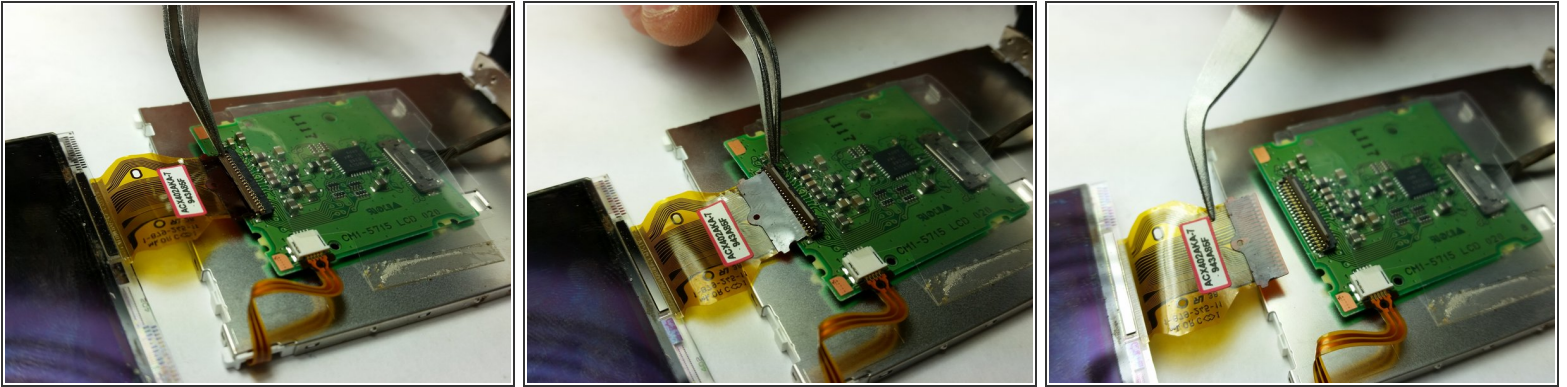
- On the bottom of the LCD screen carefully turn it so the screen is facing the top of the camera and remove the 2.22mm Phillips #00 screw.
- ⓘ Once this screw comes off the top case will come off and the LCD screen will be held by only the wires so handle it carefully so as not to damage the wires.

Step 8



- Remove the screen from the base of the LCD.
- ⚠ Do not pull because the wire strip is still attached to the LCD base.
- Do not remove this wire, it is not needed when replacing the screen.

Step 9



- Use the tweezers to lift the small brown plastic snap before you remove the wire.

To reassemble your device, follow these instructions in reverse order.