



Skytex SP728 Screen Replacement

How to replace the front screen.

Written By: Michelle Strickland



INTRODUCTION

This guide will show how to take the device apart and how to identify components that need to be removed to replace the screen.



TOOLS:

- [iFixit Opening Tools](#) (1)
 - [Tweezers](#) (1)
 - [Phillips #00 Screwdriver](#) (1)
-

Step 1 — Case



- Make sure the device is powered off
- Rotate the device so the ports and screws face you

Step 2



- Using a small phillips screwdriver, unscrew both end screws

Step 3



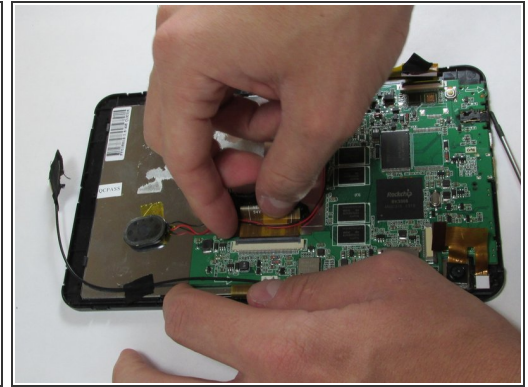
- Using a plastic opening tool, work your way around the edge of the device, separating the case from the rest of the device

Step 4



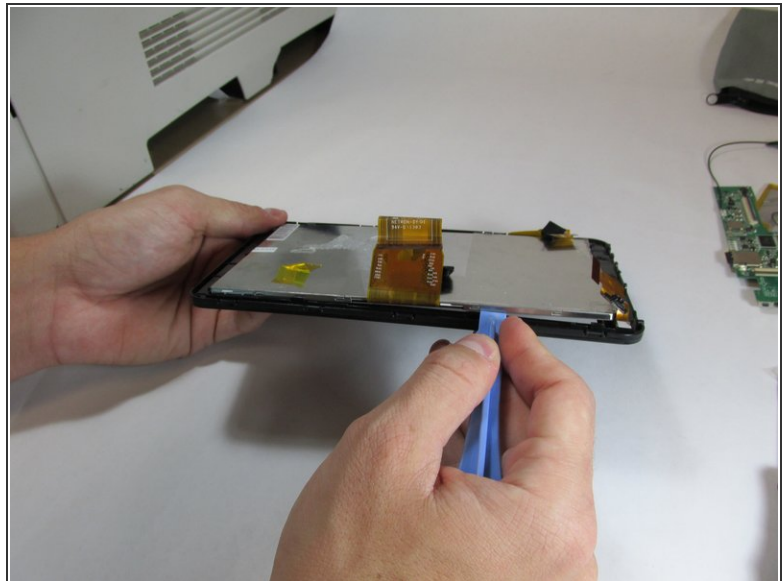
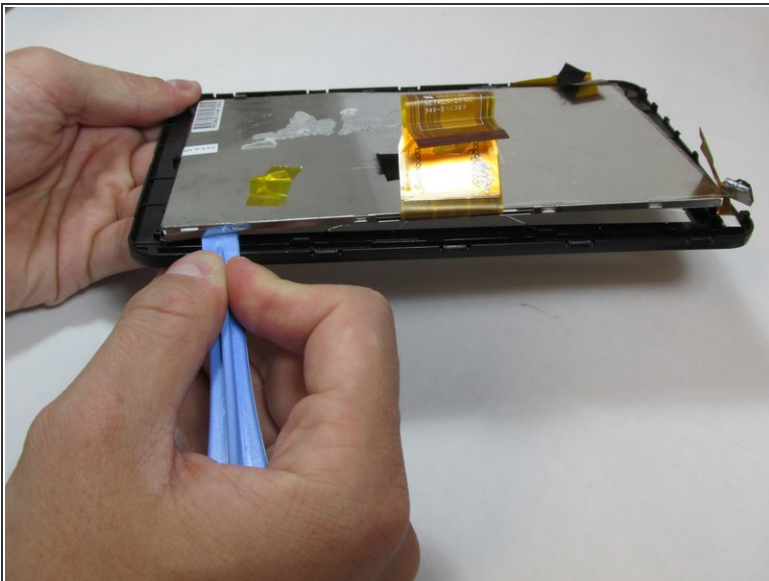
- Once the case has been loosened, pry the backing off gently with your hands.
- ⚠ Make sure to remove the case gently as extra force can break the clasps or the case itself.

Step 5 — Screen



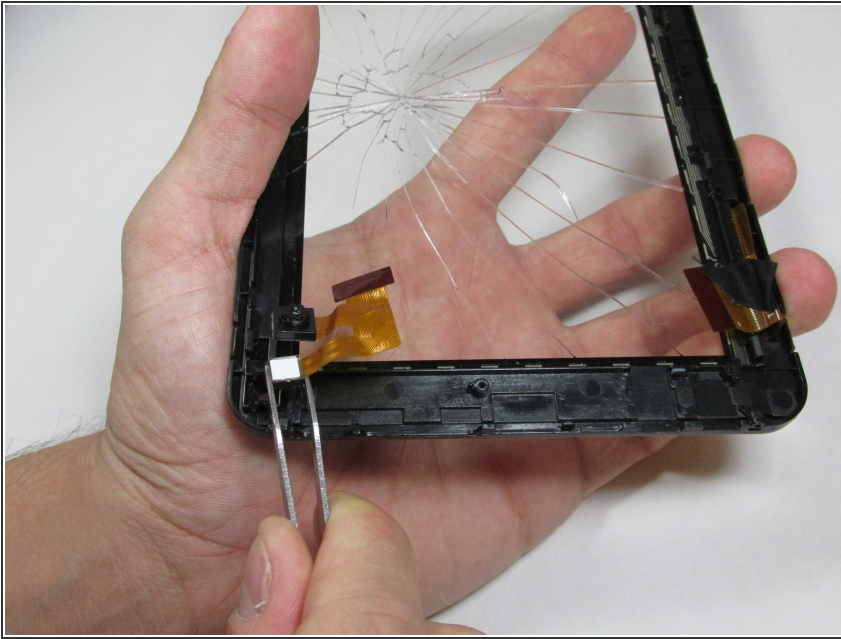
- Follow the [Case Replacement](#) to separate the tablet from its backing
- Using a small Phillips screw driver, unscrew all screws connecting circuit board to device
- Remove all tape connecting battery and circuit board to front case
- Detach all connector strips from the circuit board

Step 6



- Using the plastic opening tool, begin separating the front screen from the display

Step 7



- Once screen has been separated, use tweezers to remove front camera

To reassemble your device with a new screen, follow these instructions in reverse order.