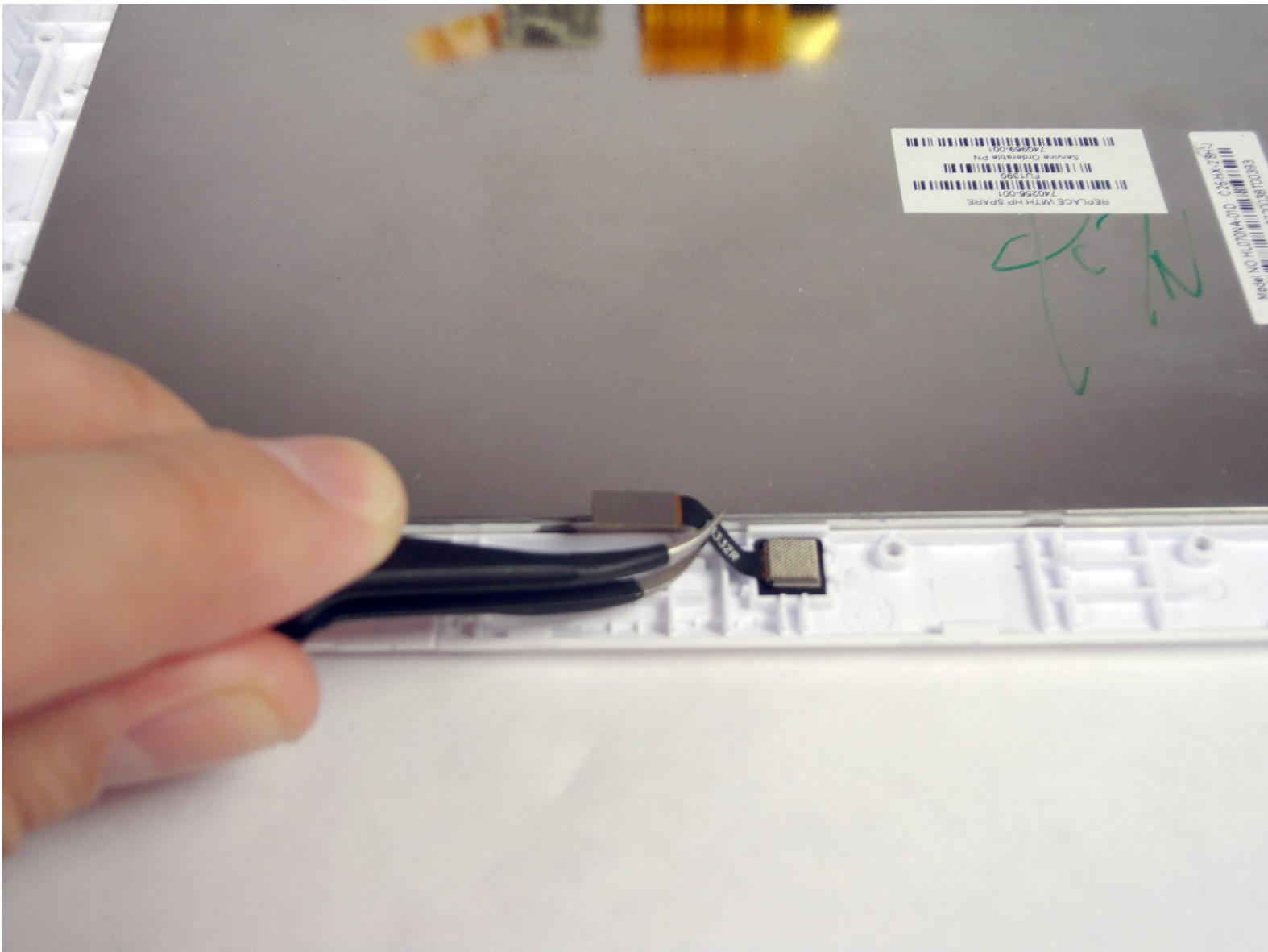




# HP 7 1800 Front Facing Camera Replacement

In this guide, you will be using a Phillips #00...

Written By: Trevor Shumate



---

## INTRODUCTION

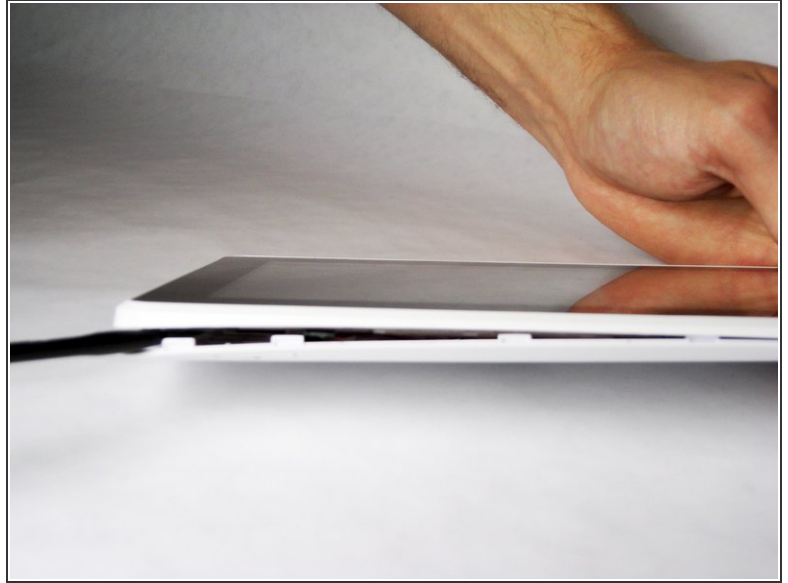
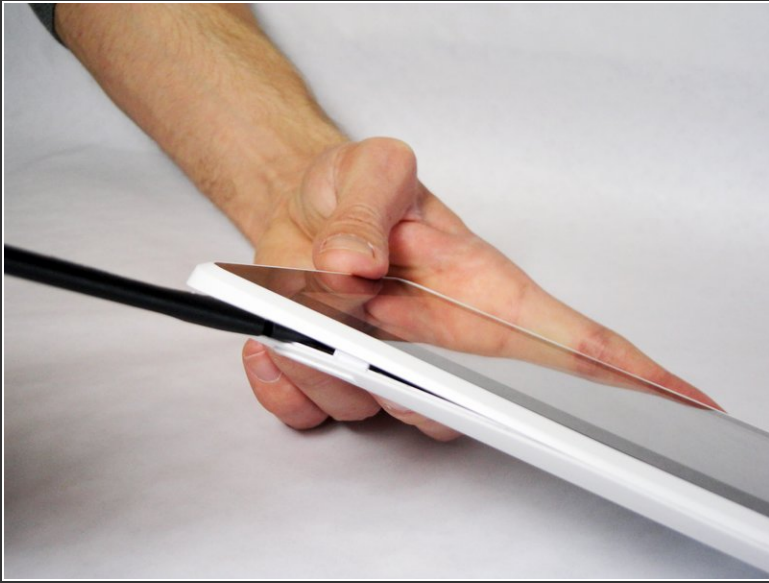
In this guide, you will be using a [Phillips #00 Precision Screwdriver](#) to remove the front facing camera.

---

### TOOLS:

- [Spudger](#) (1)
  - [Magnetic Mat](#) (1)
  - [Tweezers](#) (1)
  - [Phillips #00 Screwdriver](#) (1)
-

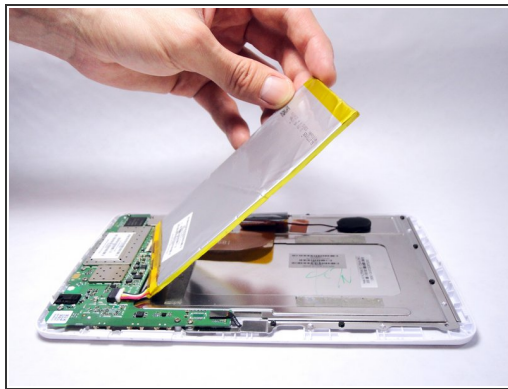
## Step 1 — Remove the back panel



- Carefully insert a Spudger into one of the corners of the tablet.
- Slide the Spudger along the edge popping the tabs out along the way.

⚠ Be careful not to break the tabs.

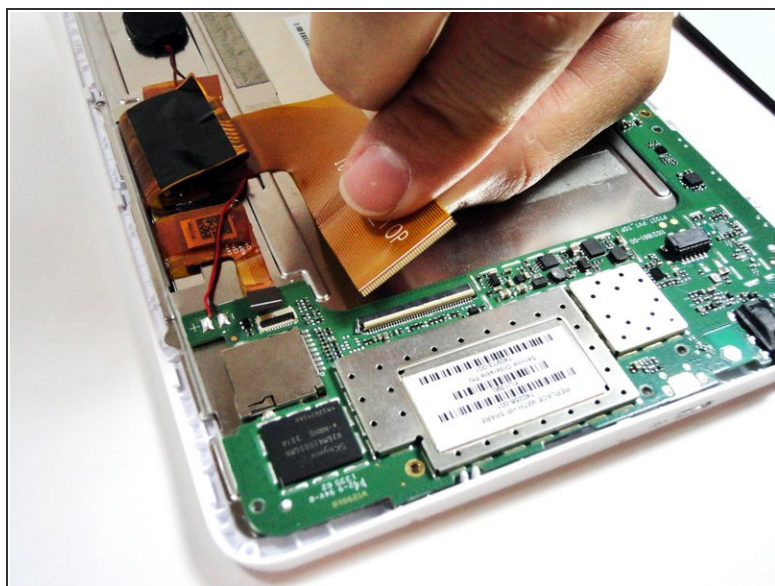
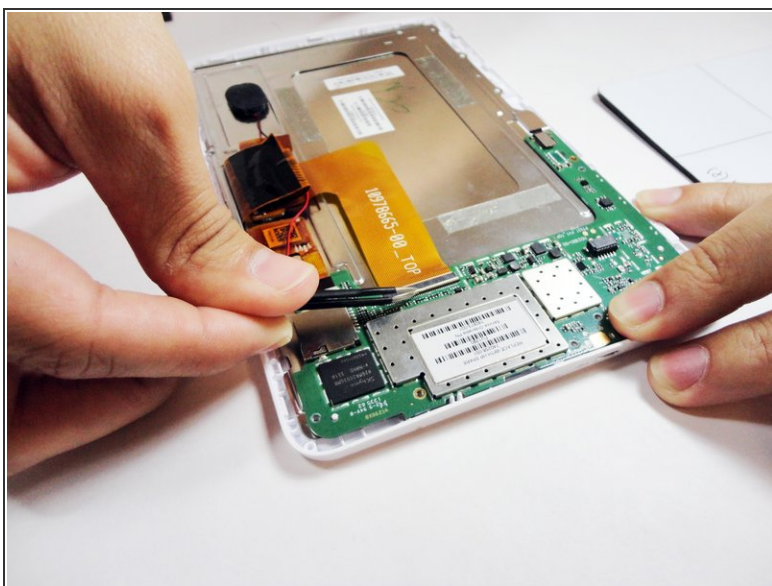
## Step 2 — Remove the battery



- Slide the Spudger under the battery to lift it off the adhesive.
- Gently pull the cable connection from the motherboard using tweezers.

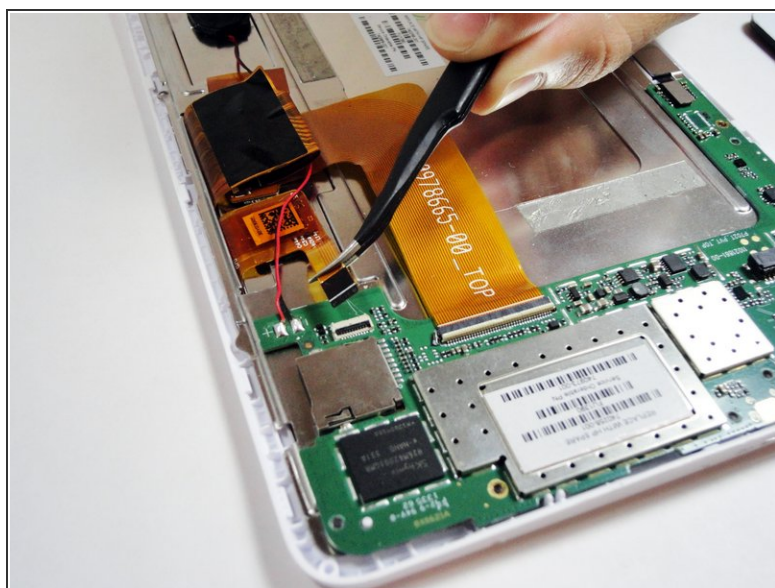
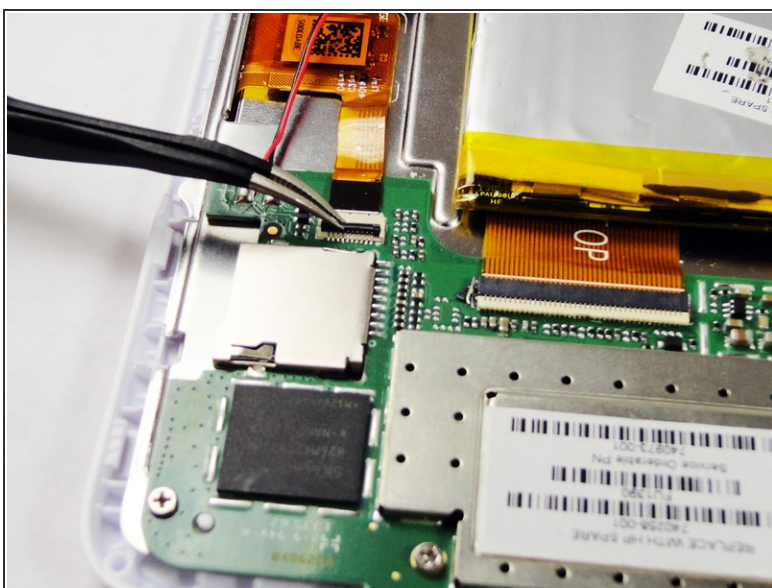


### Step 3 — Remove the large ribbon cable



- Remove the larger ribbon cable by gently flipping the beige latch and pulling it out with tweezers.

### Step 4 — Remove the smaller ribbon cable



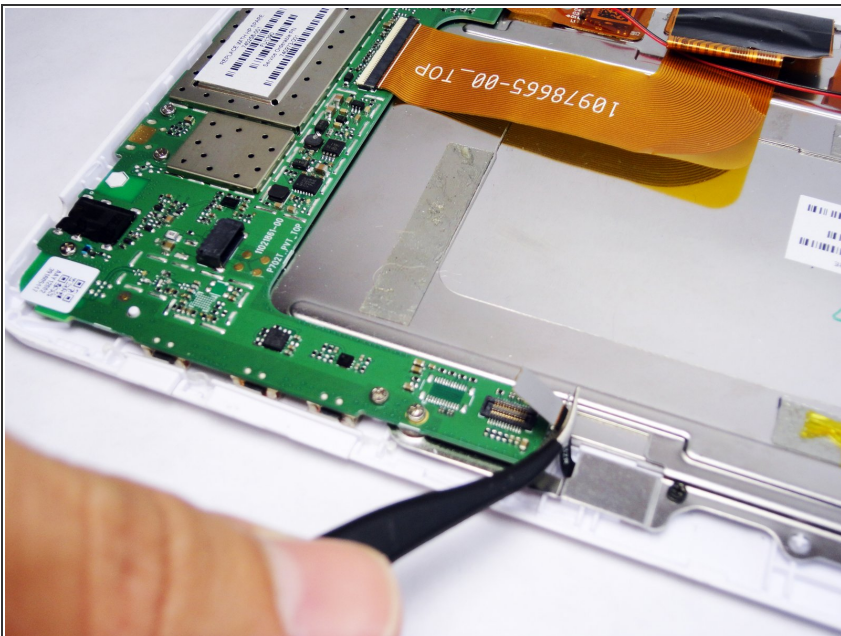
- Remove the smaller ribbon cable by gently flipping the black latch and pulling it out with tweezers.

## Step 5 — Unscrew the 7 silver screws from the logic board



- Remove the following 7 screws:
  - Six 4.17mm Phillips #00 around the motherboard.
  - One 2.67mm Phillips #00 next to the front facing camera.
- ⓘ The 2.67mm screw circled in yellow is notably shorter than the other 6 screws circled in red.

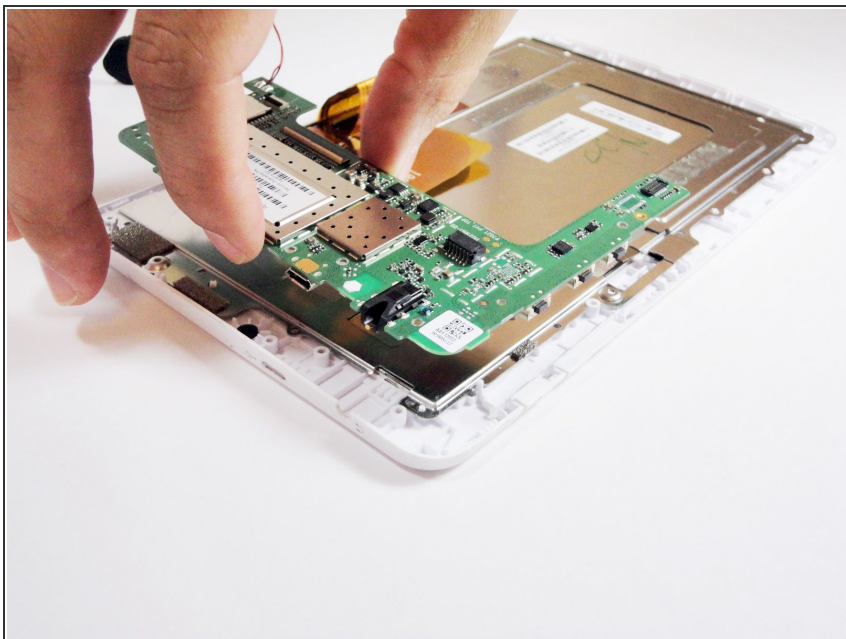
## Step 6 — Unplug the front facing camera from the logic board



- Gently pry the front facing camera plug up and off of the motherboard.

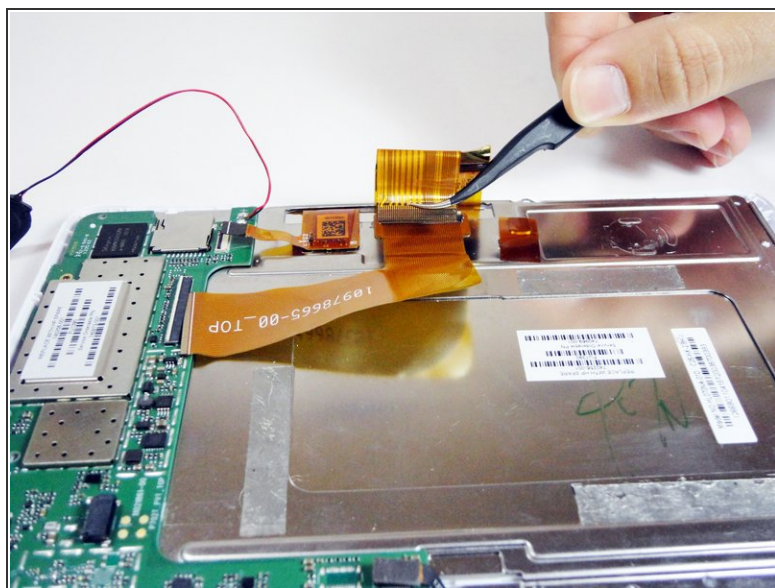
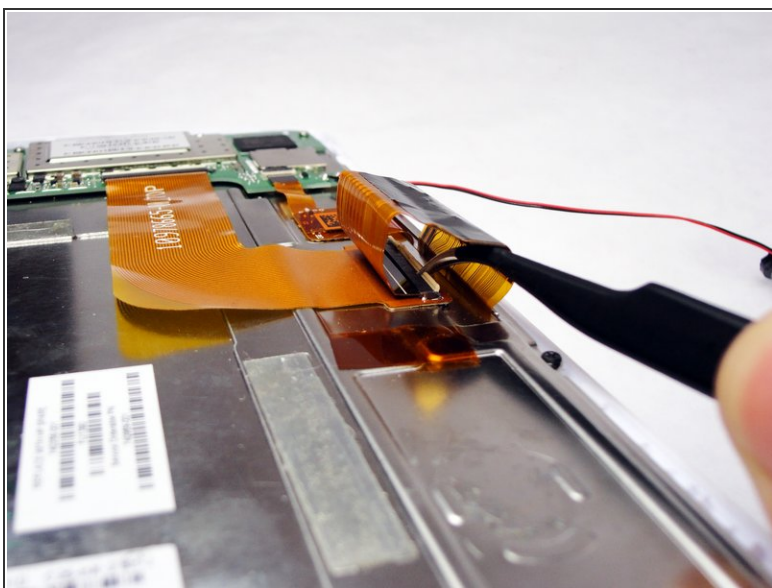


## Step 7 — Remove the logic board



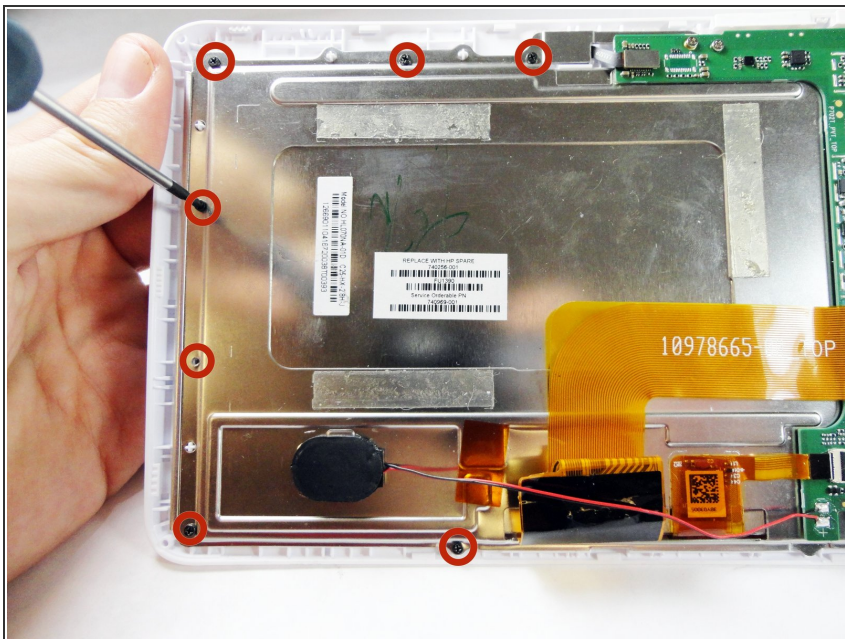
- Carefully lift the motherboard directly up.

## Step 8 — Remove the ribbon cable attached to the metal plate



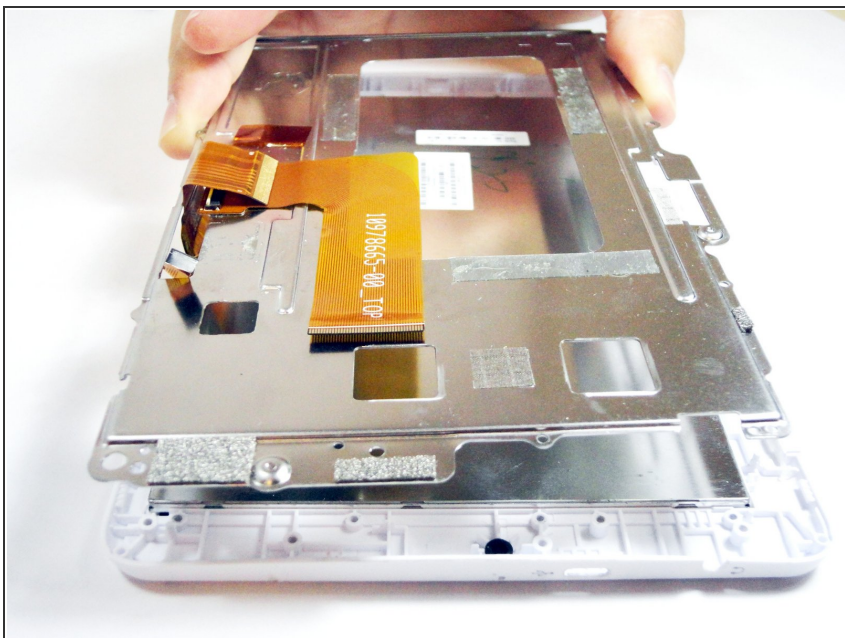
- On the metal plate inside of the device, there is a ribbon cable in a loop. Flip the white tab and pull the cable out.

## Step 9 — Unscrew the 7 black screws on the metal plate



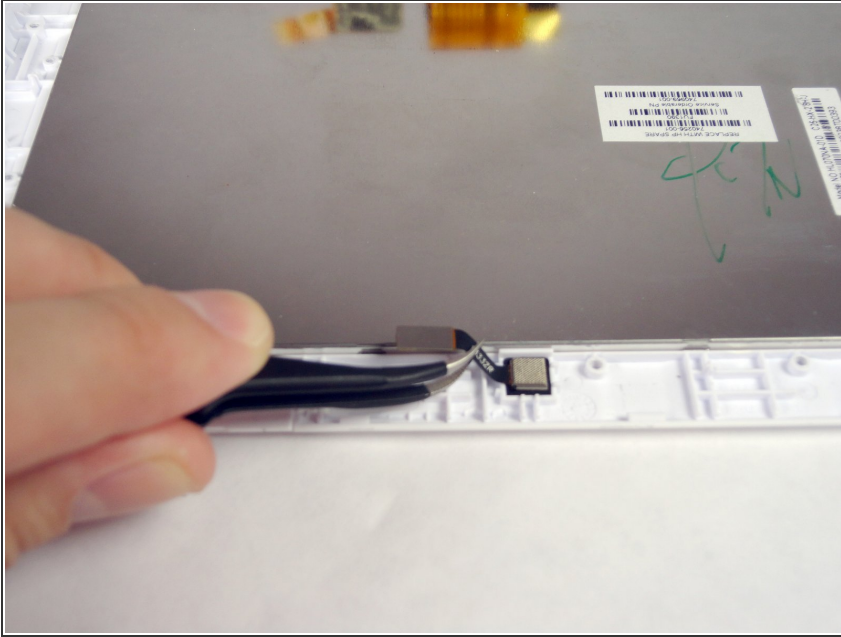
- Unscrew the following black screws:
  - Seven 2.82mm Phillips #00 around the metal casing.

## Step 10 — Remove the metal plate



- Gently lift the metal plate directly up.

## Step 11 — Remove the camera



- Gently remove the camera from the device with tweezers by lifting it up and out of its square hole.

To reassemble your device, follow these instructions in reverse order.