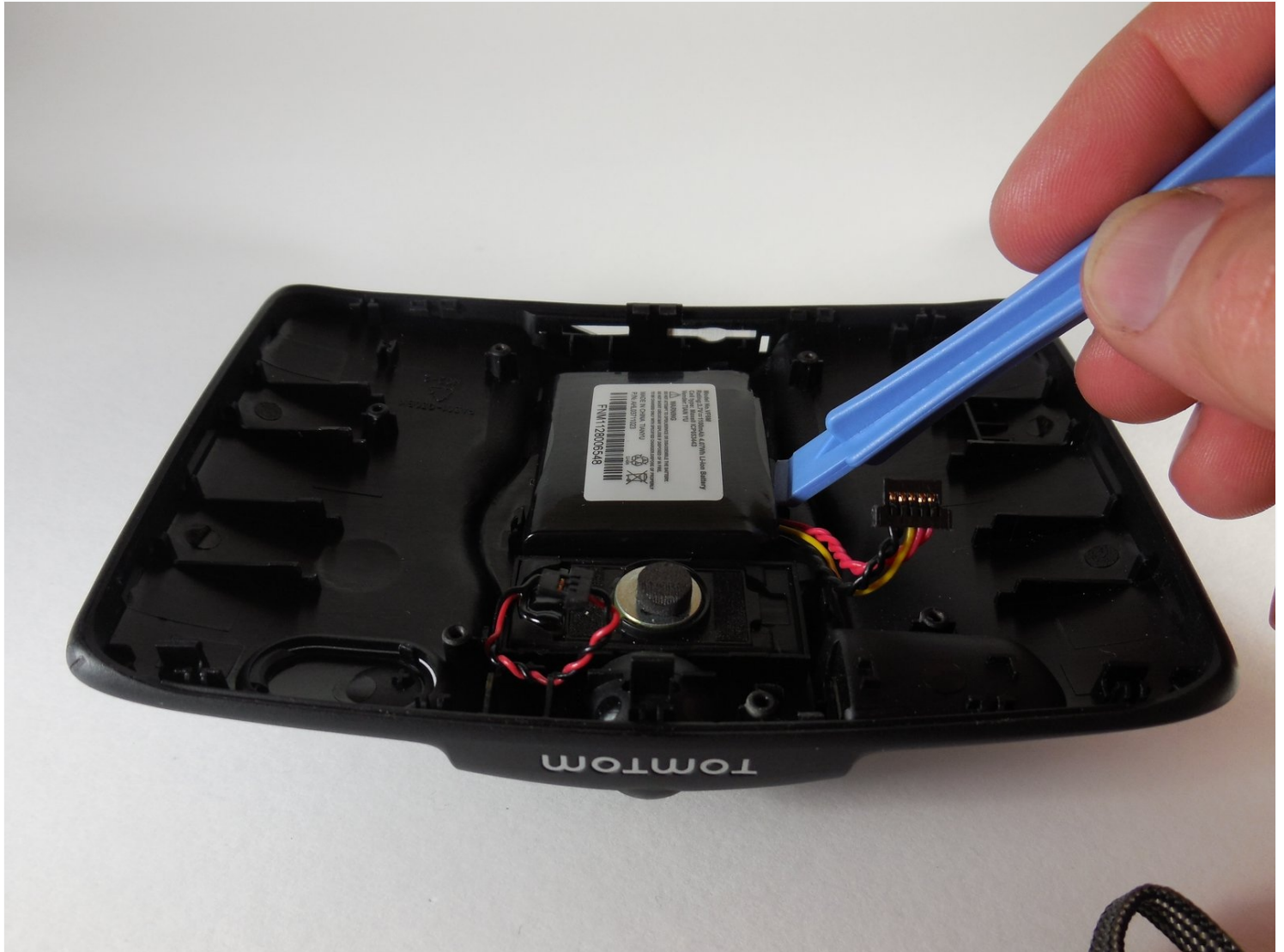




# TomTom GO Live 1535M Battery Replacement

If your TomTom Go Live does not seem to be...

Written By: Mathias Sagide



# INTRODUCTION

If your TomTom Go Live does not seem to be charging or hold said charge, then the battery needs to be replaced. This guide will show how to take this device apart and replace the battery without damaging the screen or cables.

---

## TOOLS:

[64 Bit Driver Kit](#) (1)

[Phillips #00 Screwdriver](#) (1)

[iFixit Opening Tool](#) (1)

[Tweezers](#) (1)

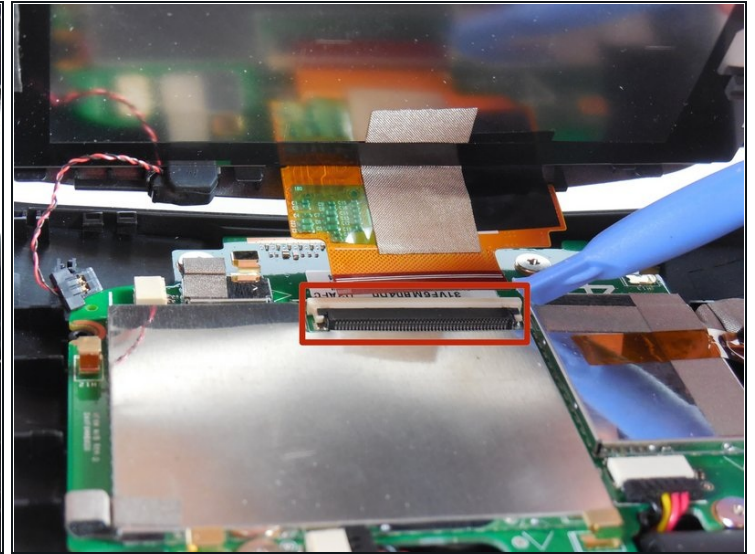
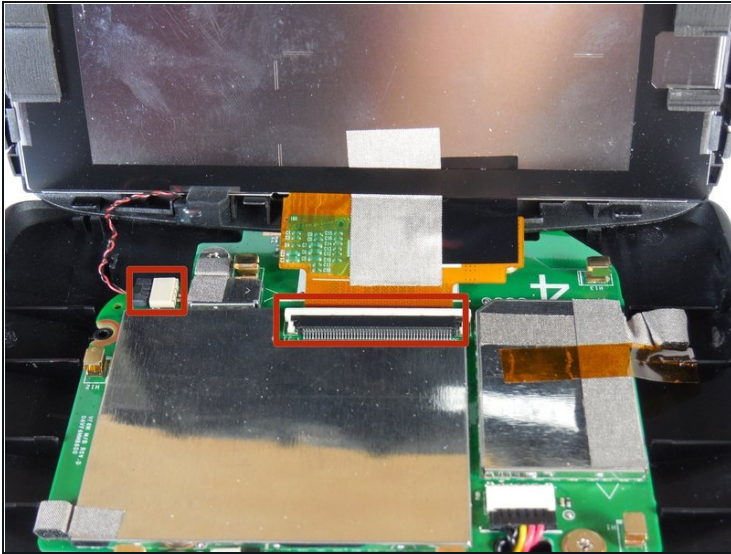
---

## Step 1 — Motherboard



- Slip a small opening tool underneath the screen, gently sliding it around the outside edge.
- ① It may be easier to start at the corners.

## Step 2



- Carefully remove the reset button cable (located on the left) and the ribbon cable.
- Remove the screen and set it aside.

## Step 3

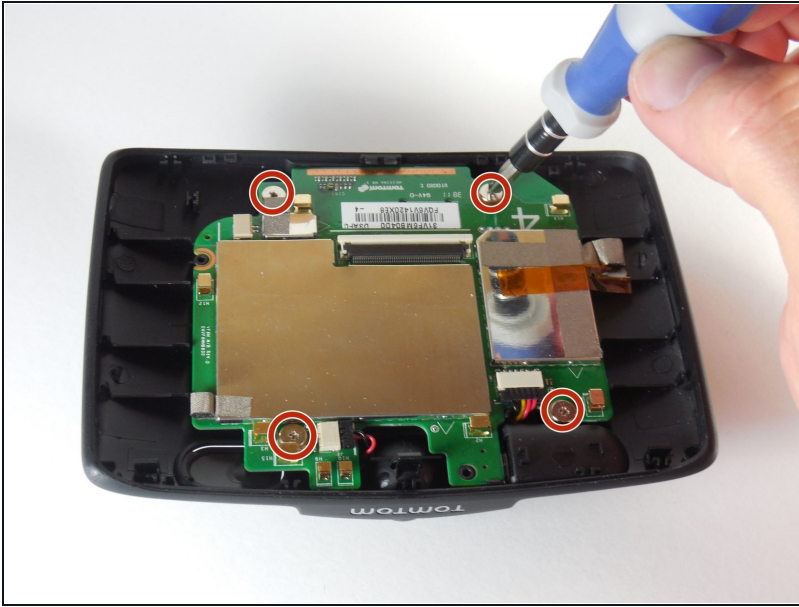


- Remove the logic board cables.

⚠ We highly advice that a pair of [tweezers](#) are used for this step to ensure no part is damaged.

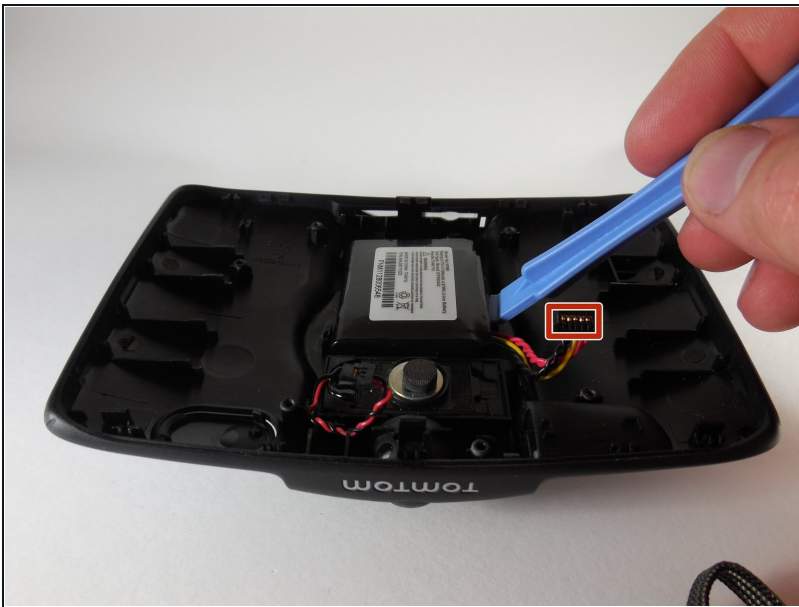


## Step 4



- Remove the 3.6mm screws with a Phillips Screwdriver.
- After removing the screws simply lift the logic board from the base.

## Step 5 — Battery



- Simply lift the battery up and out of the base.
- Remove the cable.
- Replace the battery.

To reassemble your device, follow these instructions in reverse order.