



TomTom GO Live 1535M Motherboard Replacement

Written By: Mathias Sagide



TOOLS:

[Phillips #00 Screwdriver](#) (1)

[Tweezers](#) (1)

[64 Bit Driver Kit](#) (1)

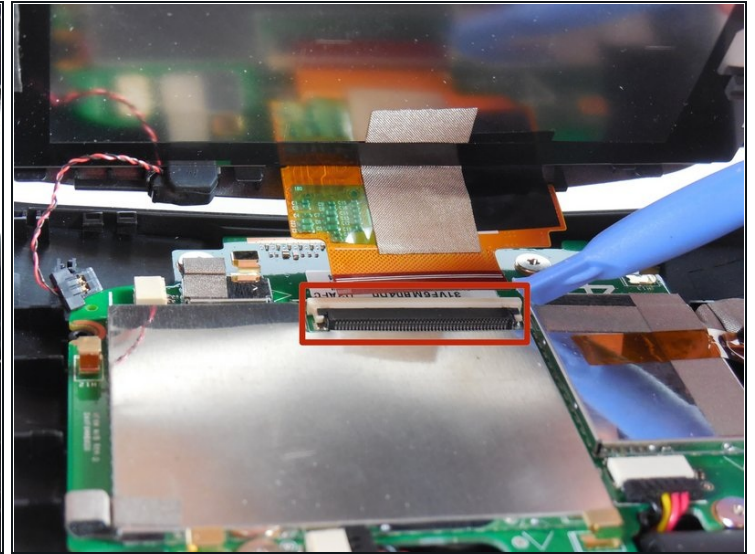
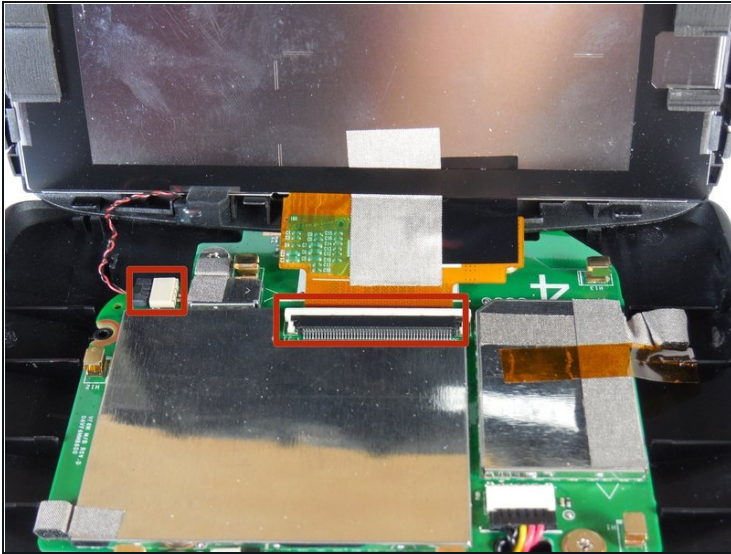
[iFixit Opening Tool](#) (1)

Step 1 — Motherboard



- Slip a small opening tool underneath the screen, gently sliding it around the outside edge.
- ① It may be easier to start at the corners.

Step 2



- Carefully remove the reset button cable (located on the left) and the ribbon cable.
- Remove the screen and set it aside.

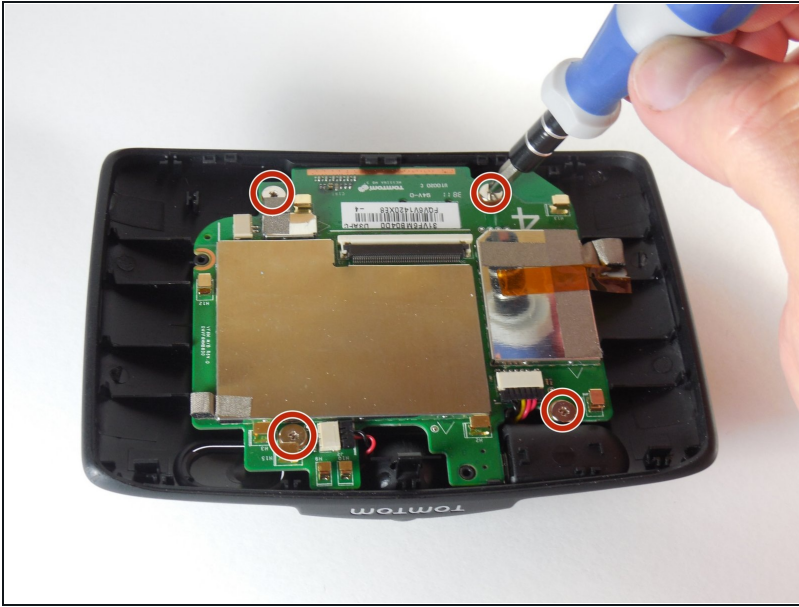
Step 3



- Remove the logic board cables.

⚠ We highly advice that a pair of tweezers are used for this step to ensure no part is damaged.

Step 4



- Remove the 3.6mm screws with a Phillips Screwdriver.
- After removing the screws simply lift the logic board from the base.

To reassemble your device, follow these instructions in reverse order.