



Skytex SP728 Battery Replacement

Use this guide to replace the battery of Skytex SP728

Written By: Galika Adhikari



INTRODUCTION

This repair guide will walk you through the primary steps of replacing the battery in the Skytex Skypad SP728.



TOOLS:

- [iFixit Opening Tools](#) (1)
- [Portable Soldering Iron](#) (1)
- [Phillips #0 Screwdriver](#) (1)
- [Phillips #00 Screwdriver](#) (1)



PARTS:

- [Skytex SP728 Battery](#) (1)

Step 1 — Case



- Make sure the device is powered off
- Rotate the device so the ports and screws face you

Step 2



- Using a small phillips screwdriver, unscrew both end screws

Step 3



- Using a plastic opening tool, work your way around the edge of the device, separating the case from the rest of the device

Step 4



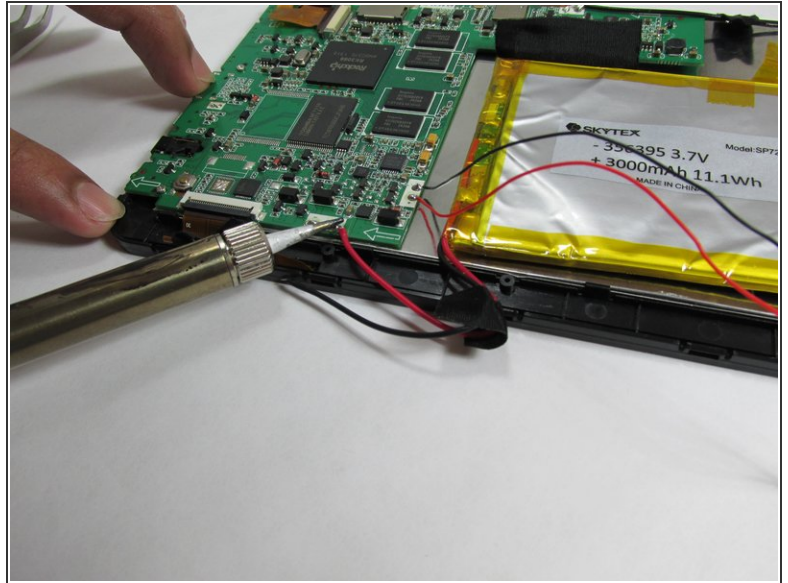
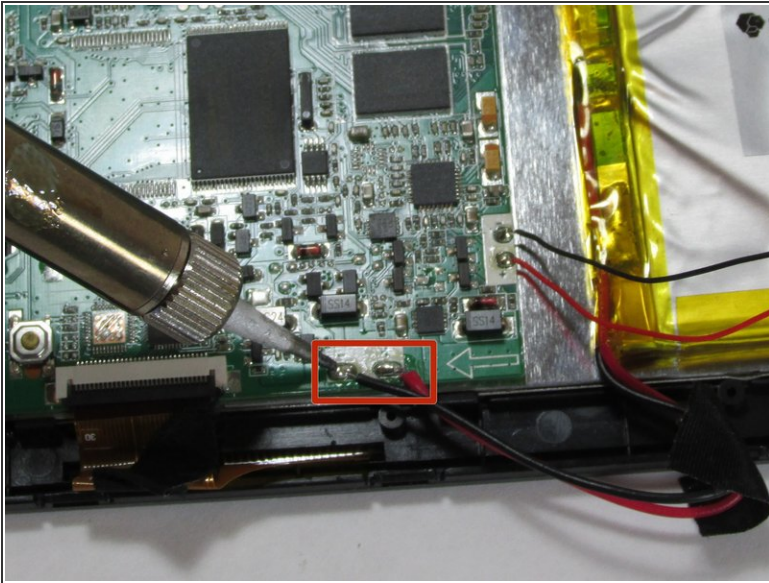
- Once the case has been loosened, pry the backing off gently with your hands.
- ⚠ Make sure to remove the case gently as extra force can break the clasps or the case itself.

Step 5 — Battery



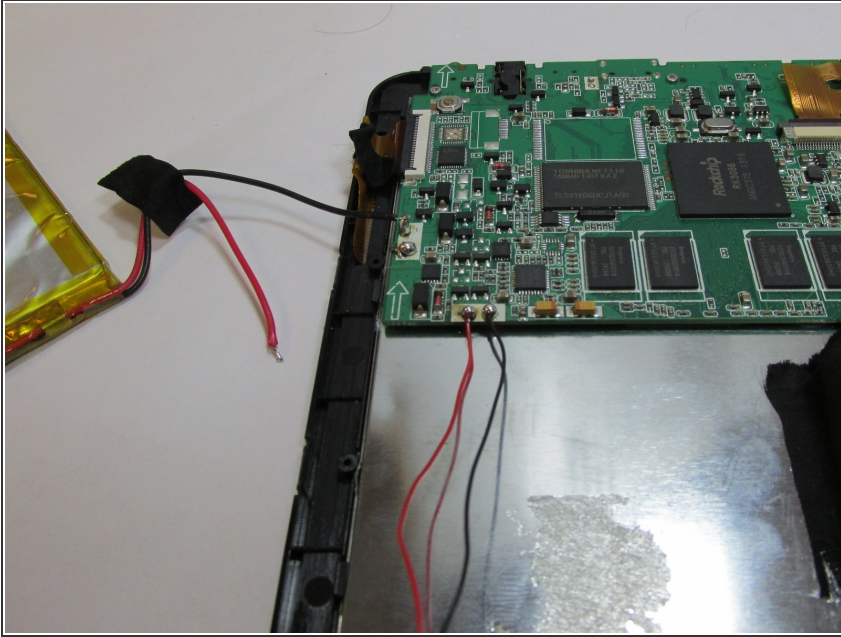
- Remove the yellow and black tape around the battery very carefully

Step 6



- Use the soldering iron and remove soldered connections to separate the wires connected to the battery from the circuit board.
 - Follow the link below for additional soldering information [How To Solder and Desolder Connections](#)
- ⚠ Soldering uses heat so make sure you are careful while doing it. Also, excessive heat can damage the components. So do not apply the soldering iron on a component for extended periods of time.

Step 7



- Using the plastic opening tool, lift up the battery from right edge and set aside.
- ⚠ Make sure that you take the battery out very carefully without bending it or damaging it as it contains toxic chemicals.
- ★ While soldering the wires for the new battery, remember that the red wire has to be connected to the positive terminal and the black wire has to be connected to the negative terminal.

To reassemble your device with a new battery, follow these instructions in reverse order.