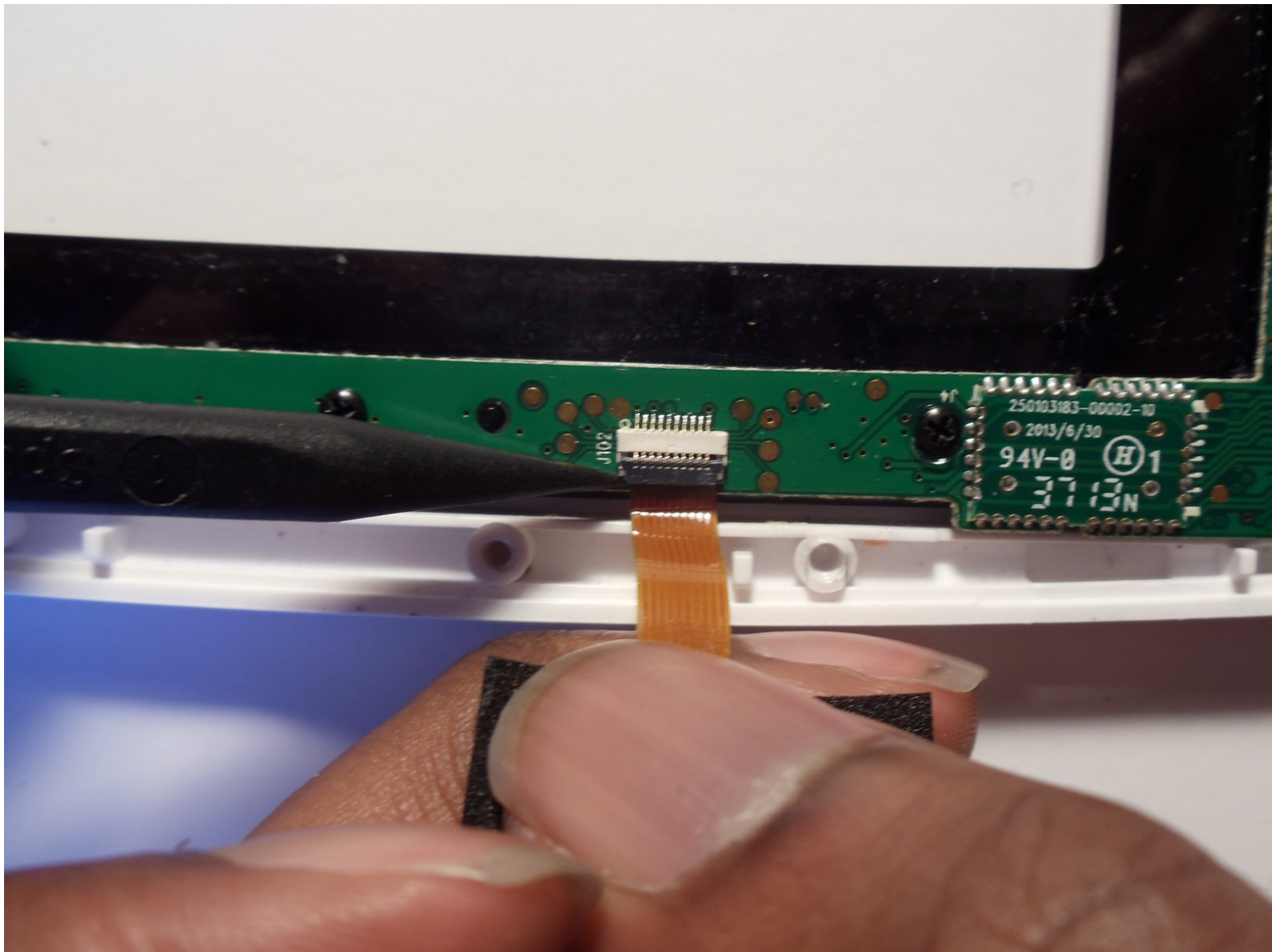




Oregon Scientific Meep! X2 Screen Sensor Replacement

This guide will show you how to replace the screen sensors within the Oregon Scientific Meep! X2 tablet

Written By: J'mel Henneman



INTRODUCTION

Use this guide to replace a damaged screen sensor in the Meep! X2 tablet.

TOOLS:

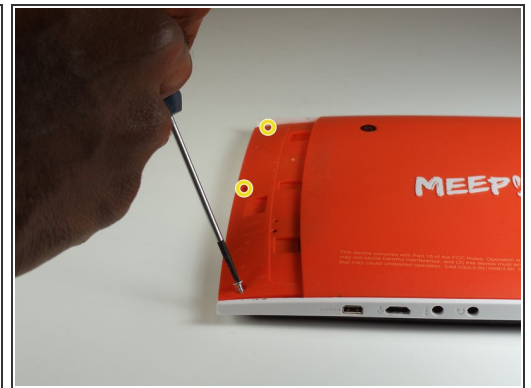
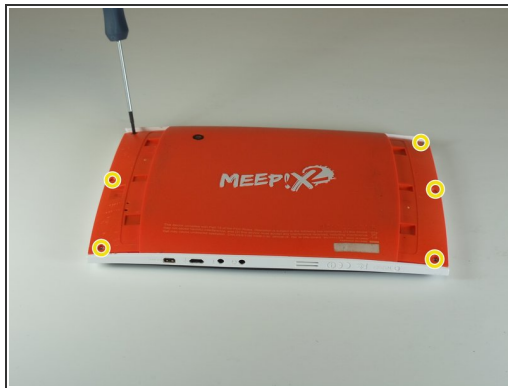
- [Phillips #00 Screwdriver](#) (1)
 - [iFixit Opening Tools](#) (1)
 - [Soldering Iron](#) (1)
 - [Spudger](#) (1)
 - [Tweezers](#) (1)
-

Step 1 — Rear Casing



- Remove the orange covers from the left and right sides of the device by sliding up against the tabs.

Step 2



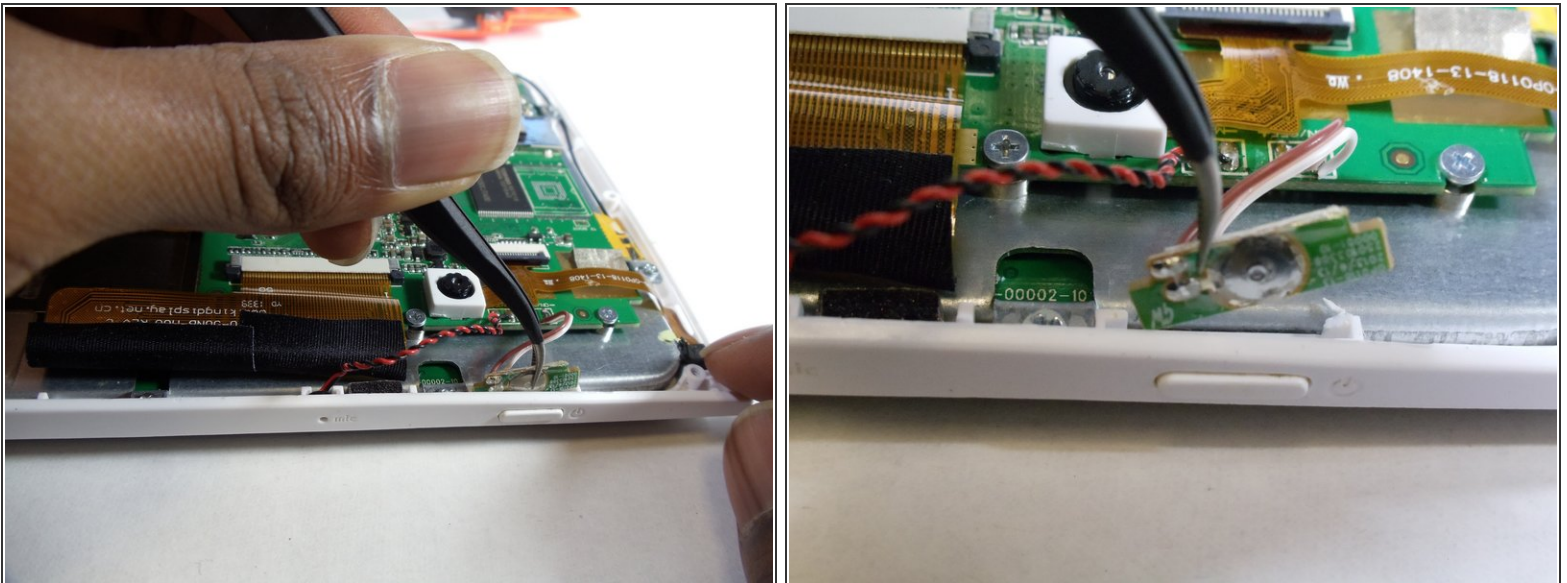
- You can remove the rear casing by unscrewing all six phillips #00(3.5mm x 4.5mm)screws from the left and right side of the device.

Step 3



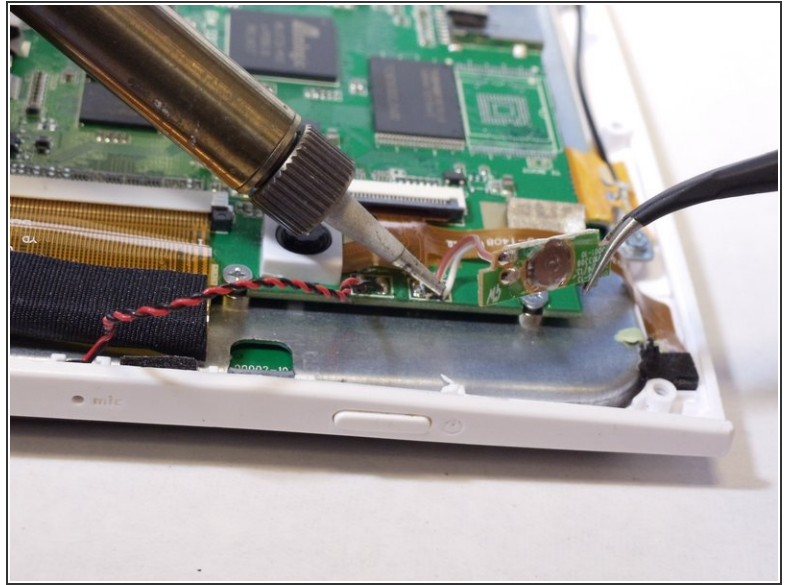
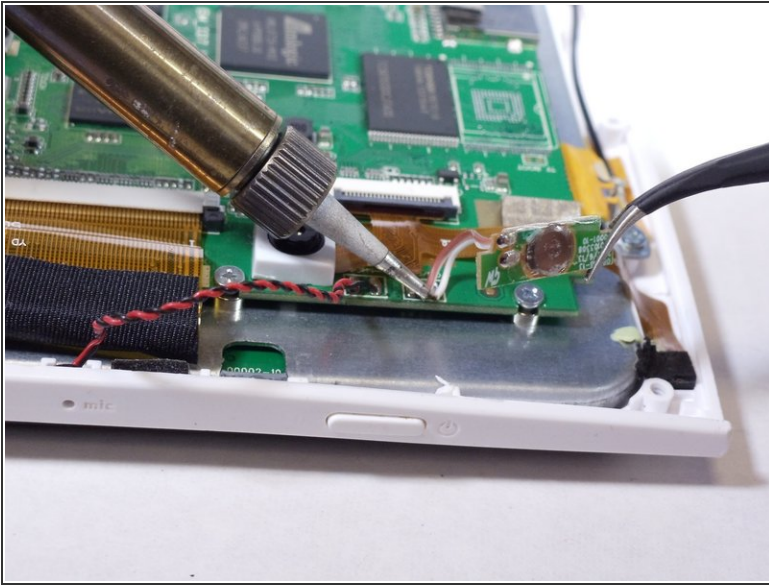
- Use the plastic opening tools to undo the clips around the edges of the device.

Step 4 — Power Button



- Use a tweezer to gently pull the power button sensor out of the case's slot.

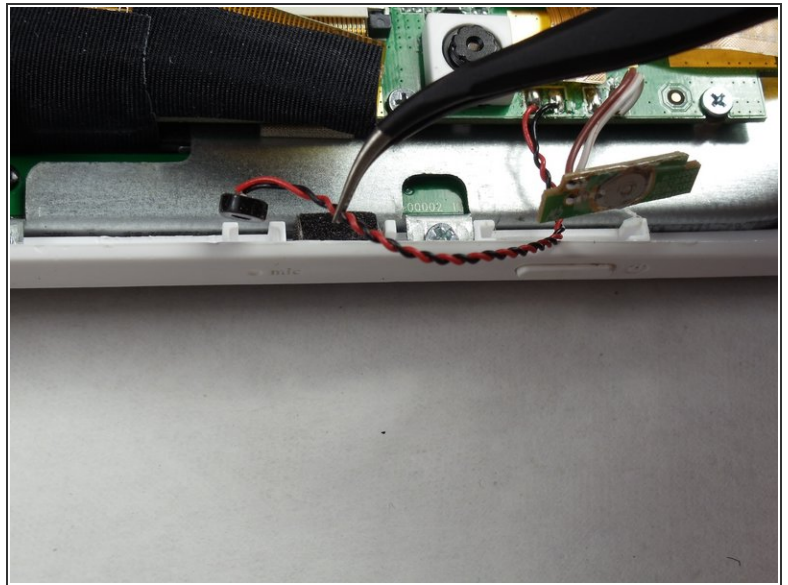
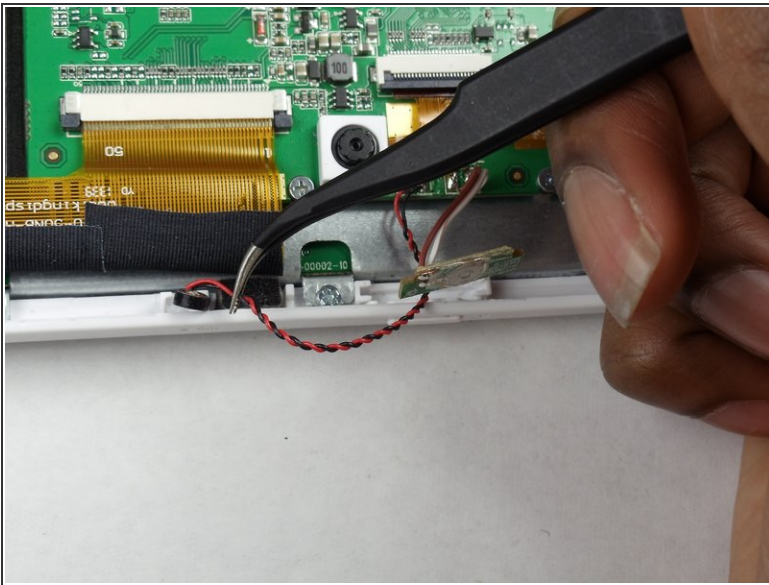
Step 5



- Use the soldering station to unsolder and remove the power button from the motherboard.

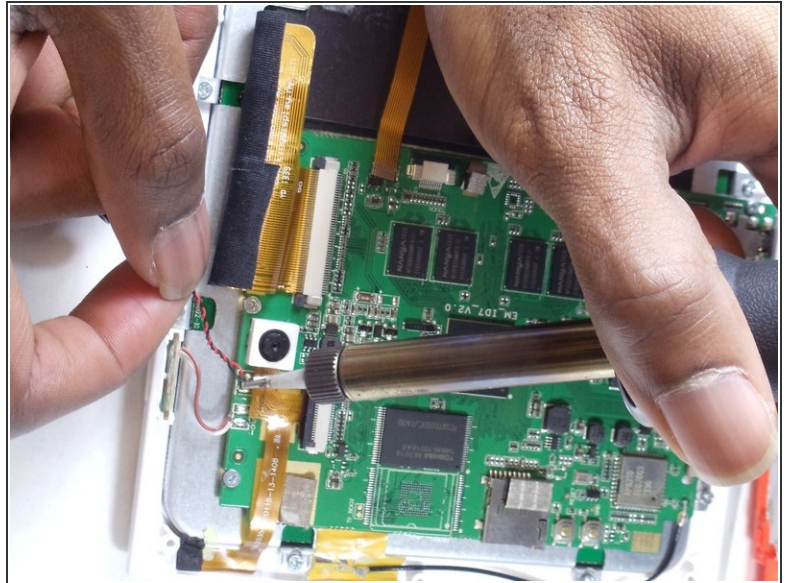
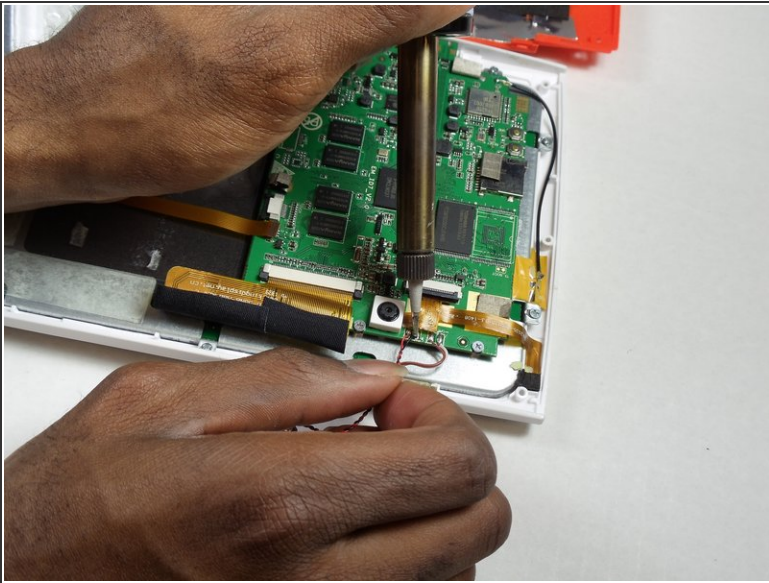
☞ In the case of screen or screen sensor replacement, disregard desoldering steps.

Step 6 — Microphone



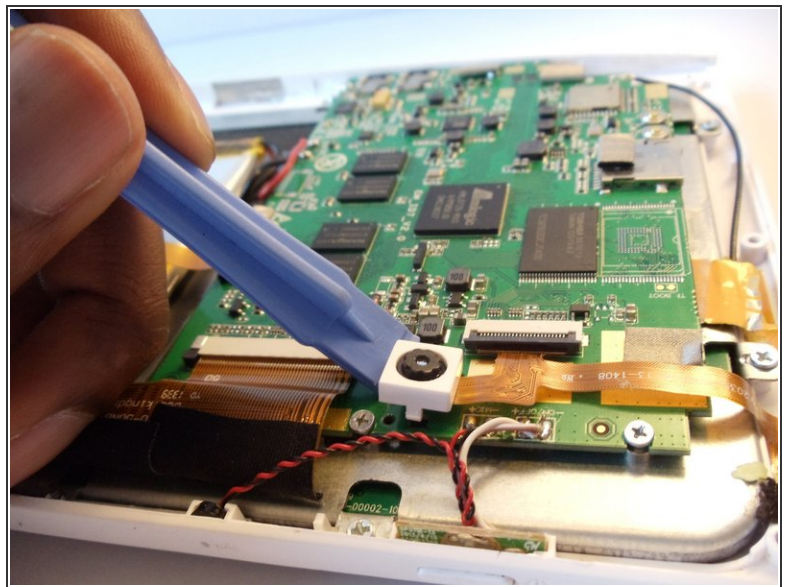
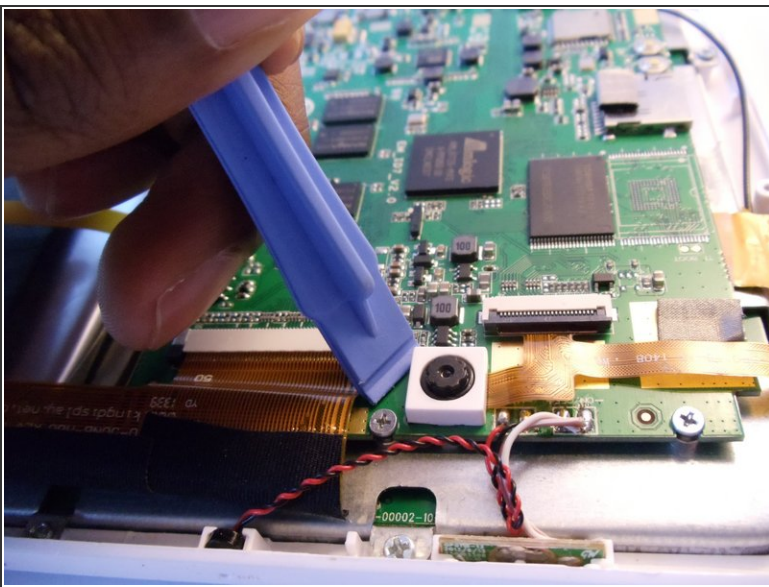
- Use your tweezers to gently remove the microphone from the slot in the casing.

Step 7



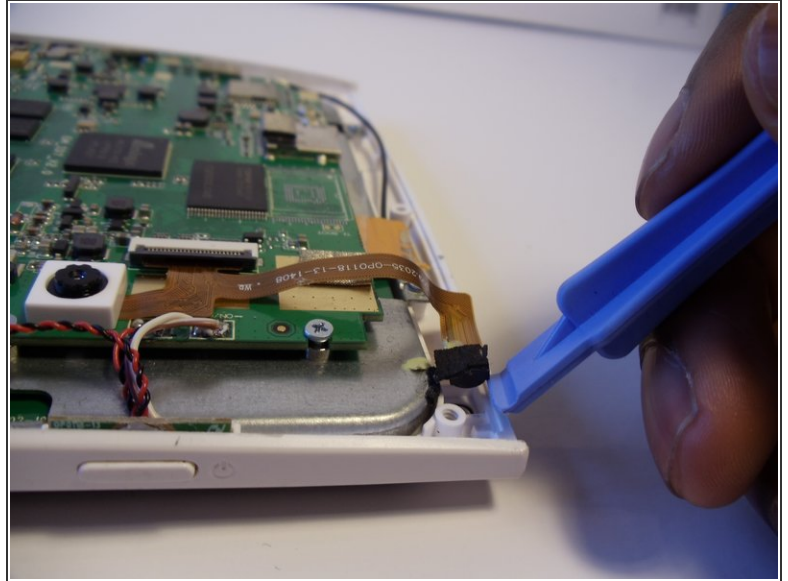
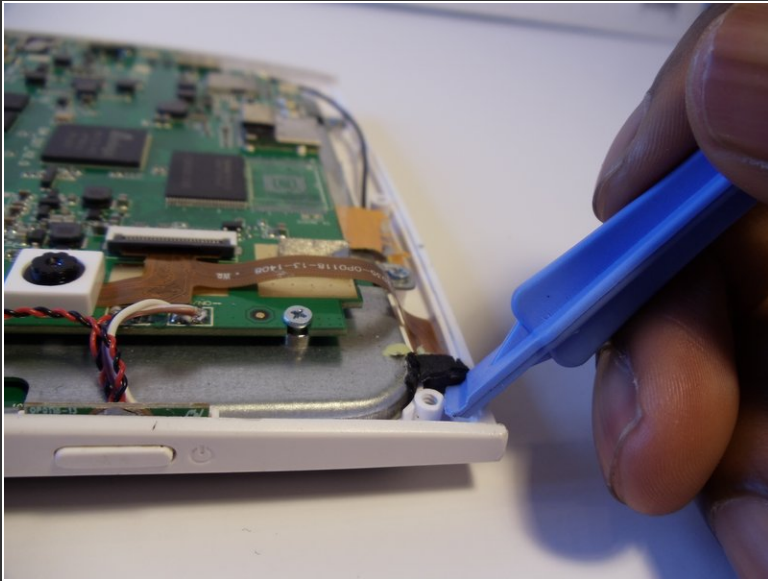
- Unsolder the microphone unit from the motherboard using the soldering station.
- ☒ In the case of screen or screen sensor replacement, disregard desoldering steps.

Step 8 — Cameras



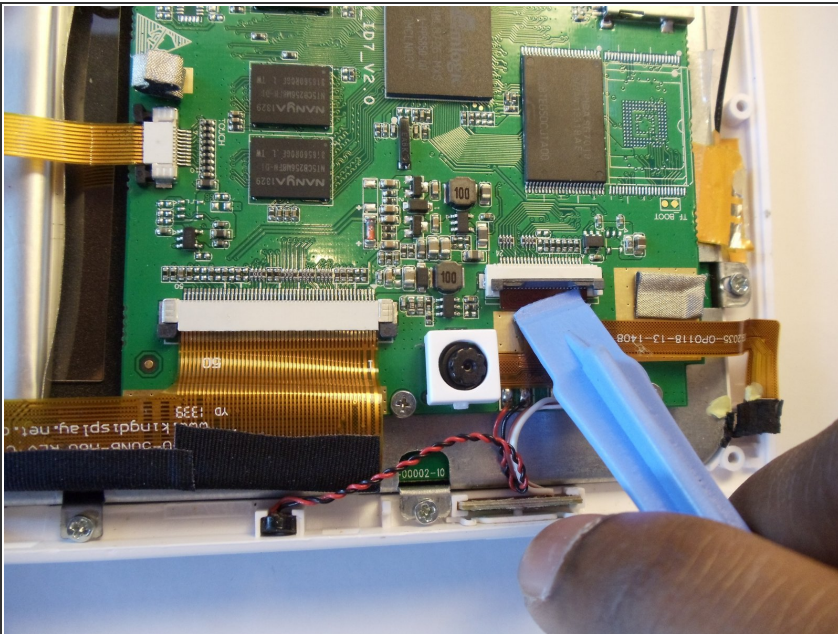
- Slip the plastic opening tool under the white, square enclosure of the camera and lift upward to unhook the camera unit from the motherboard.

Step 9



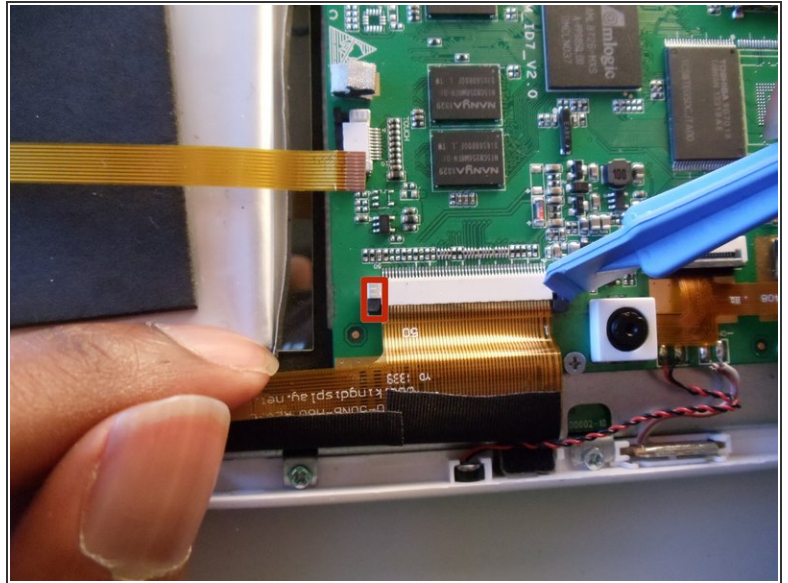
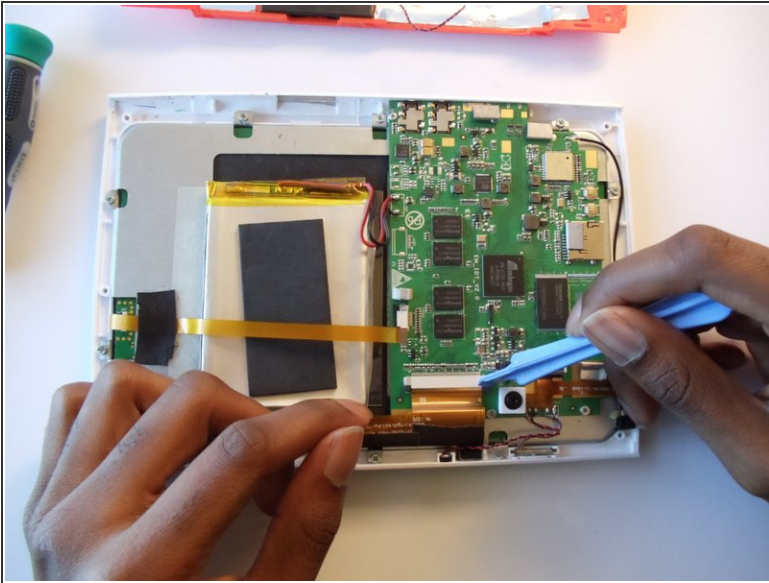
- Pry the second camera out of its slot with one of the plastic opening tools.
- ❗ Be sure to undo the black adhesive foam from the metal casing in order to remove the camera properly.

Step 10



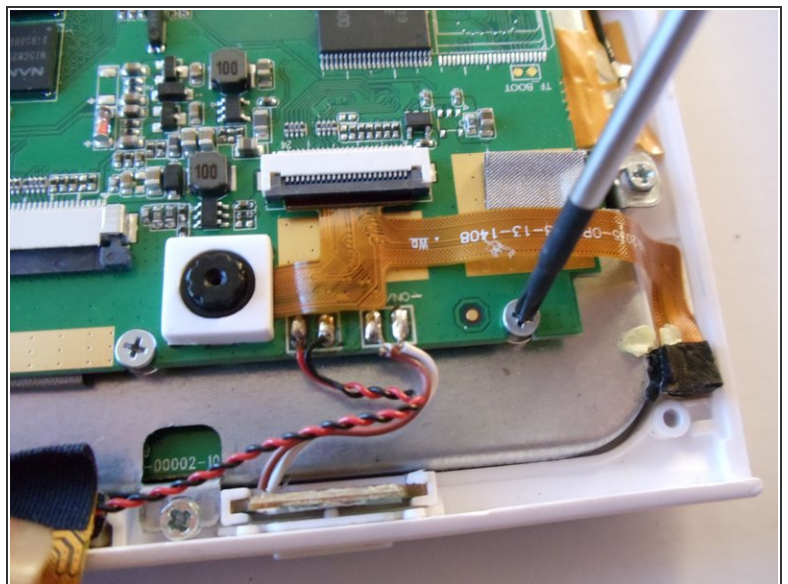
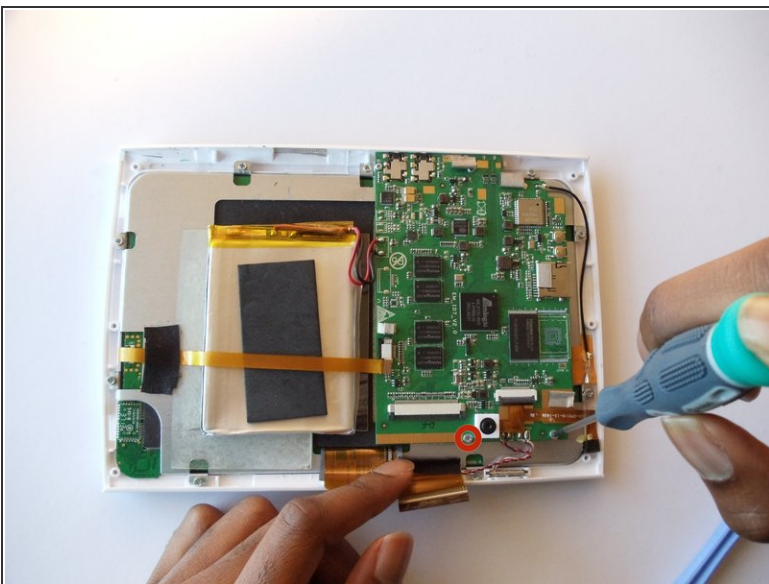
- Release the black security clip on the ribbon cable with your plastic opening tool.
- Gently disconnect the gold ribbon cable from the motherboard. The two cameras will remain attached to the ribbon cable.

Step 11 — Motherboard



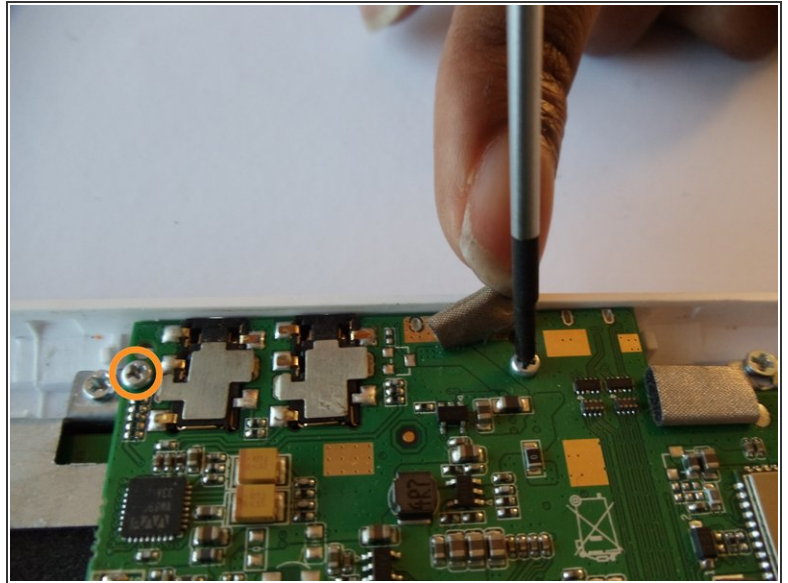
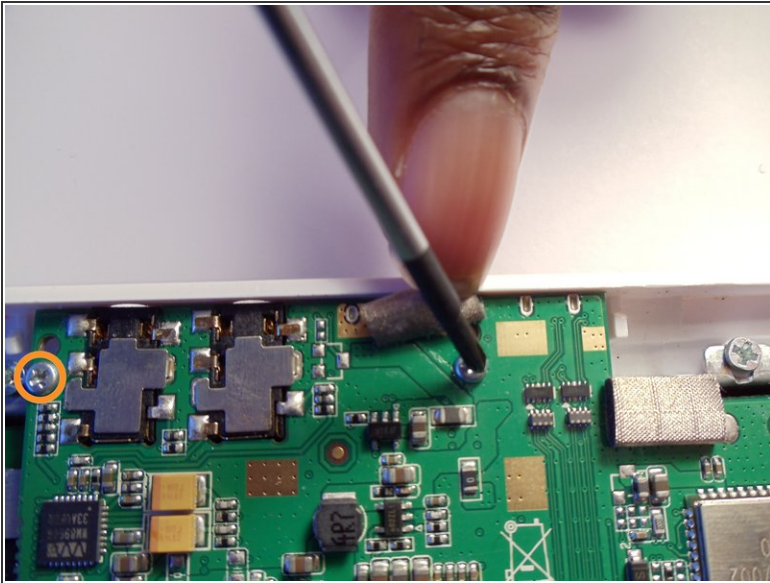
- Undo the security clips on the ribbon cable connection by placing the plastic opening tool between the black and white parts of the clip. Pull downward toward the gold ribbon cable.
- Once the left and right clips are undone, remove the gold ribbon cable from that connection by gently pulling it out.

Step 12



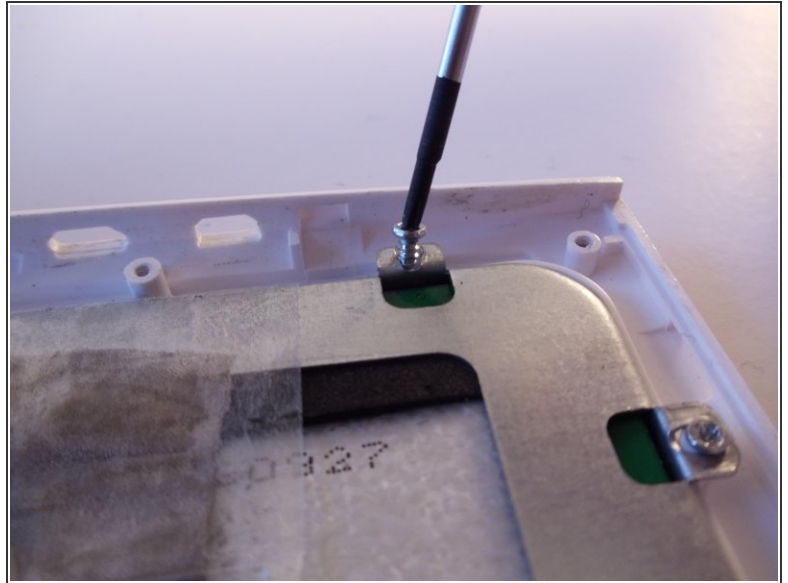
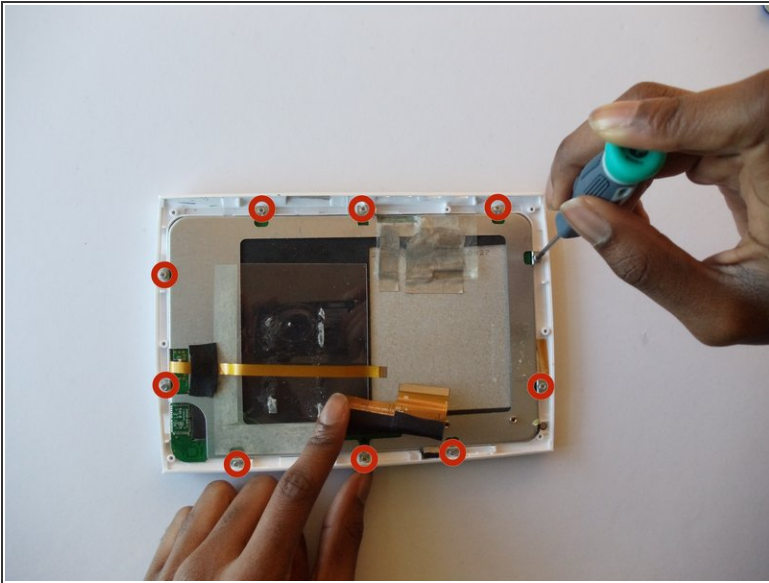
- Remove the two phillips #00 (4.5mm x 3mm) screws located on the motherboard.

Step 13



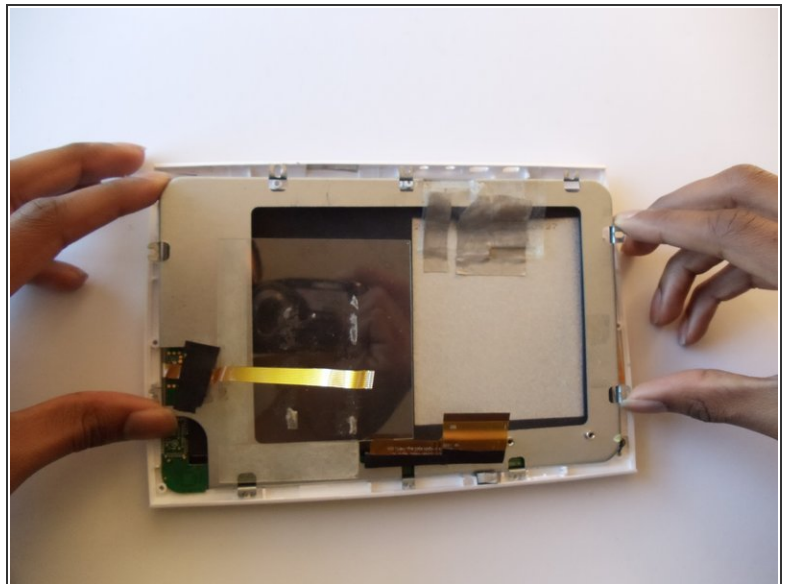
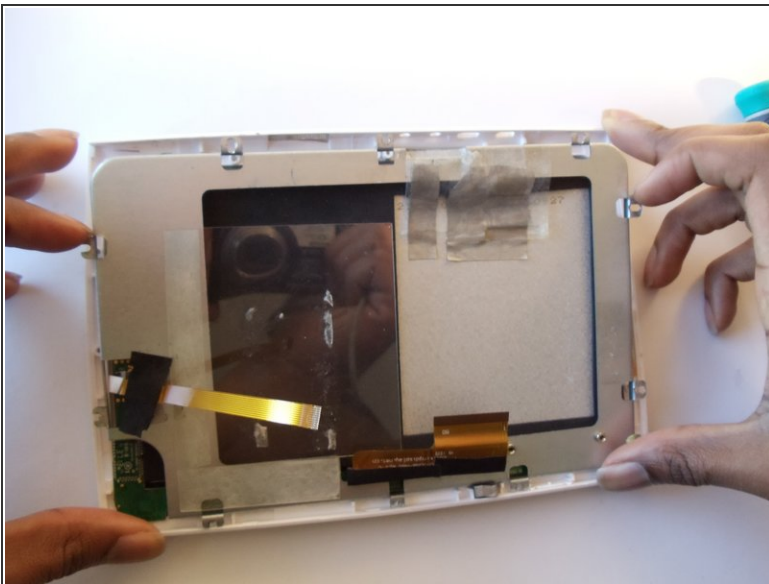
- Lift the silver, rectangular blocker in order to expose the right phillips screw #00 (4mm x 3.5mm).
- Unscrew the left and right phillips #00 (4mm x 3.5mm)screws.
- Once unscrewed, gently lift the motherboard from the rest of the device.

Step 14 — Screen



- Remove the 10 phillips #00(3.5mm x 4mm) screws around the metal framing of the screen.
- Leave the clear tape on the back of the screen until you are ready to remove it from the white plastic casing.

Step 15



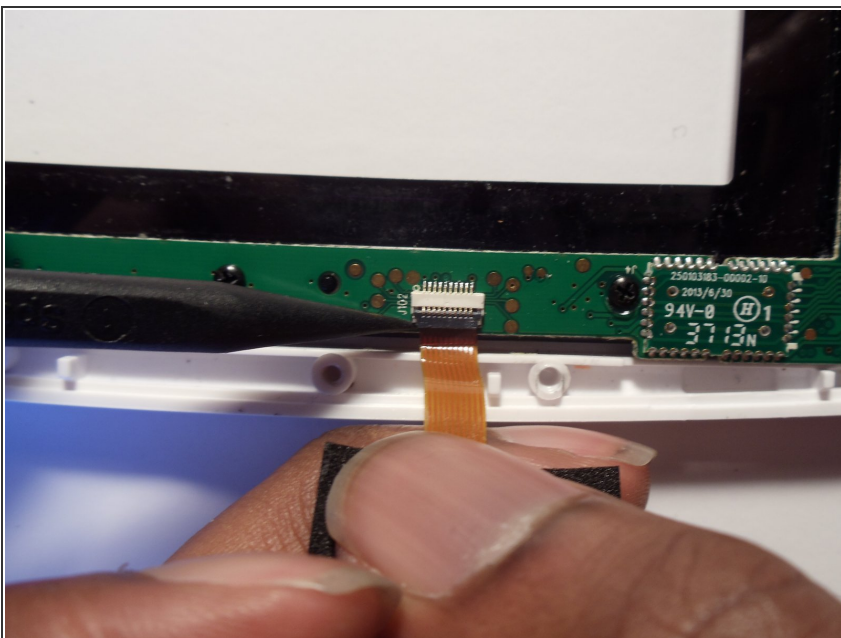
- Slowly remove the metal frame and screen from the white casing by gently pulling up on the ends of the metal frame.

Step 16



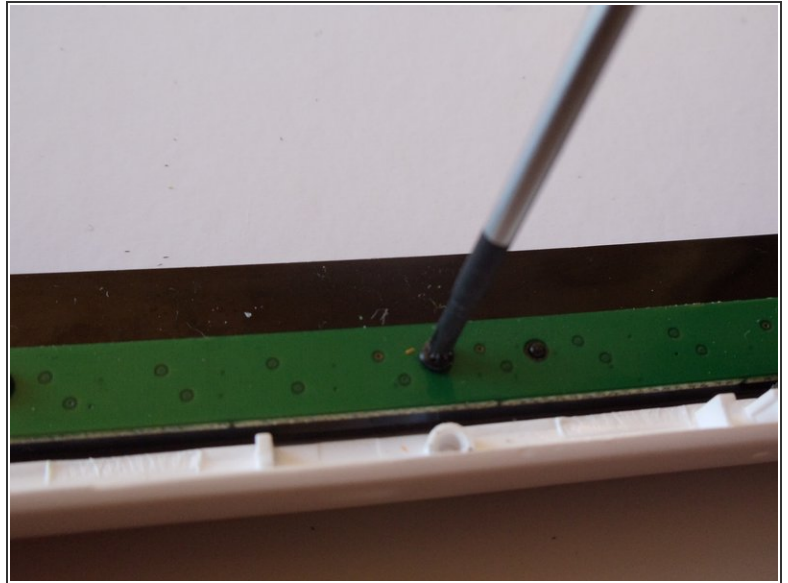
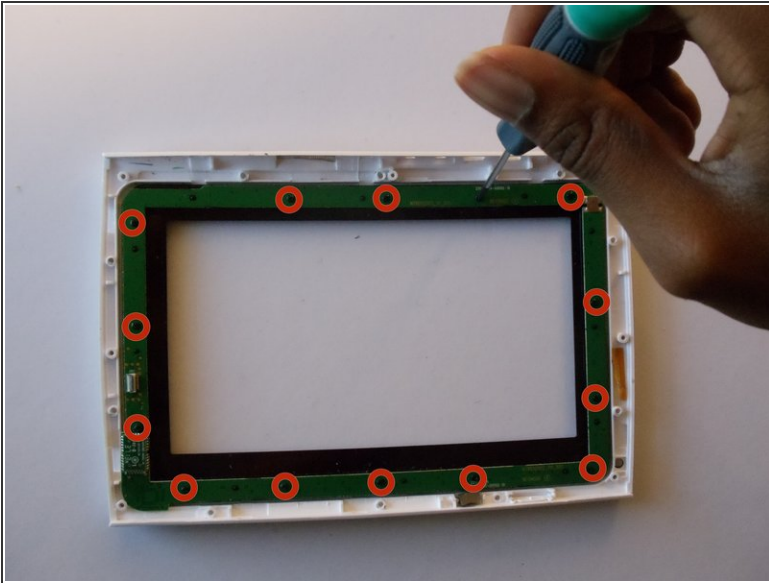
- Remove the plastic tape from the back of the screen.
- Carefully separate the screen from the metal framing.

Step 17 — Screen Sensor



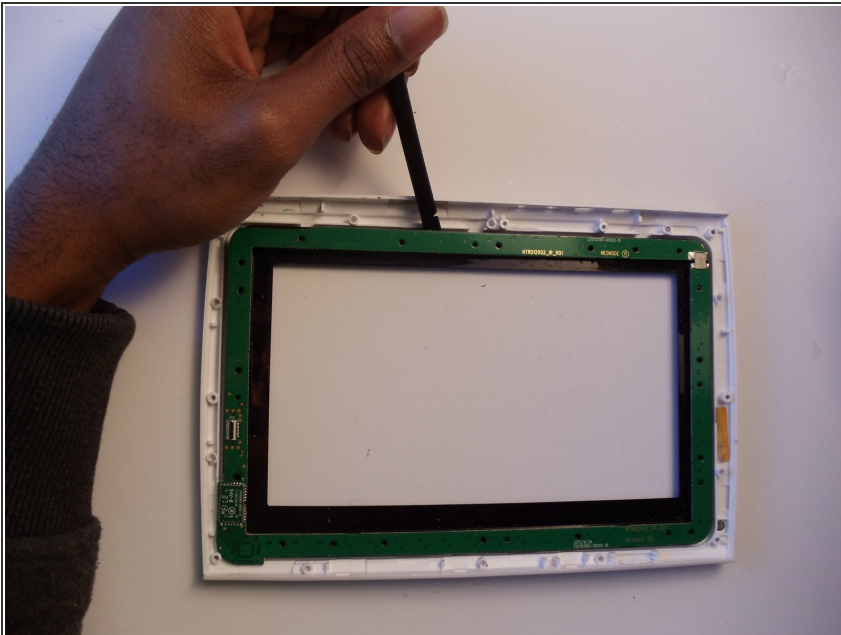
- Use the spudger to undo the ribbon cable security clip located on the far left of the screen sensor.

Step 18



- Unscrew each of the 14 black, phillips #00 (3mm x 3mm) phillips head screws from the screen sensor.

Step 19



- Use the spudger to gently undo the sensor from the white casing.

To reassemble your device, follow these instructions in reverse order.

This document was generated on 2020-11-16 02:59:04 AM (MST).

