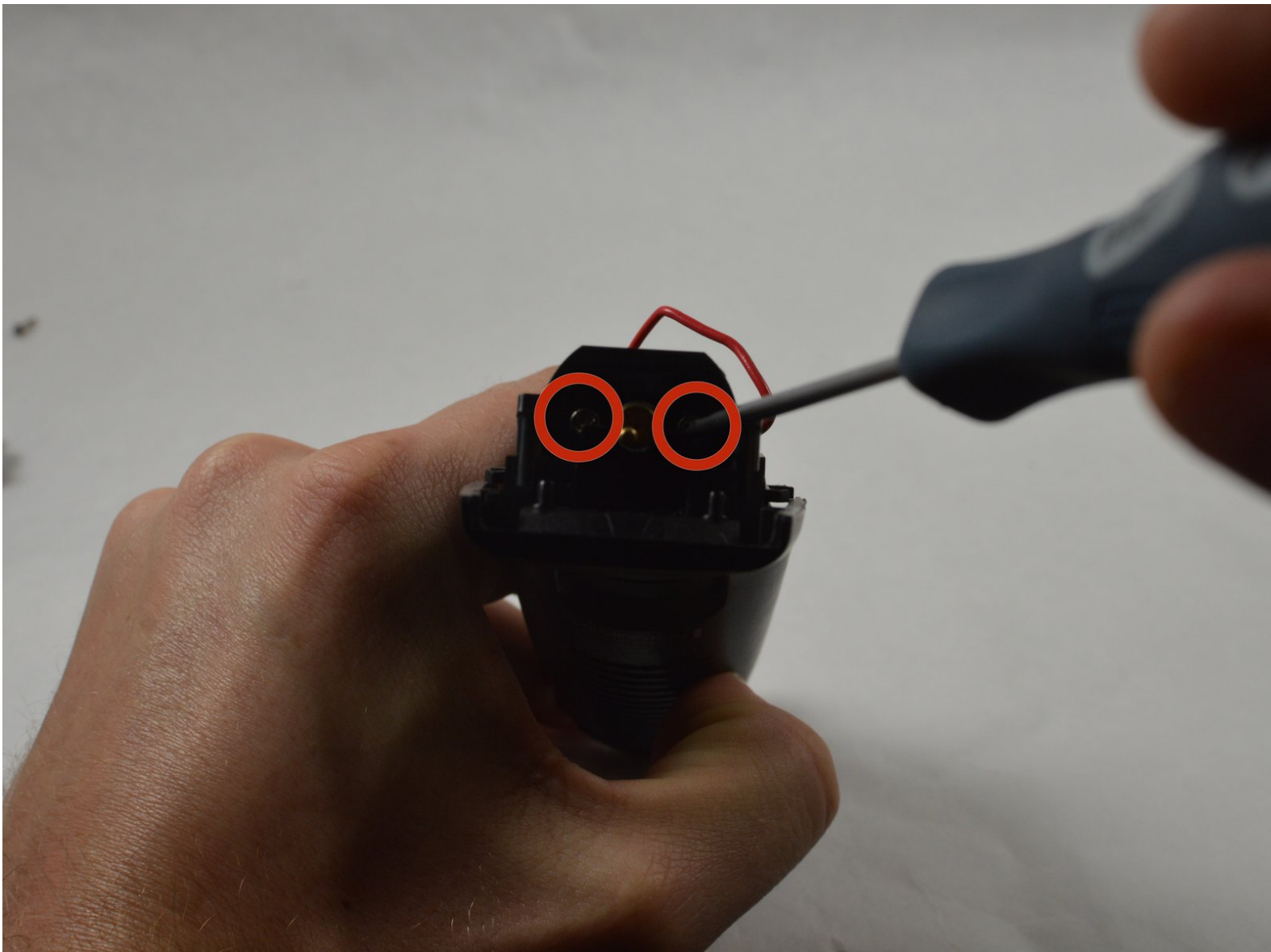




# Remington MB4040 Motor Replacement

Guide to replace the motor.

Written By: Cameron Carnahan



---

## INTRODUCTION

The motor controls the blade. If the motor is malfunctioning, the blade will not cut properly.

---

### TOOLS:

- [Heavy-Duty Spudger](#) (1)
  - [Phillips #00 Screwdriver](#) (1)
  - [iFixit Opening Tools](#) (1)
  - [Small Needle Nose Pliers](#) (1)
  - [Tweezers](#) (1)
  - [Soldering Iron](#) (1)
-

## Step 1 — Remove Blade Assembly



- Press the black button below the blade to remove the blade.

## Step 2 — Remove Back Cover Hardware



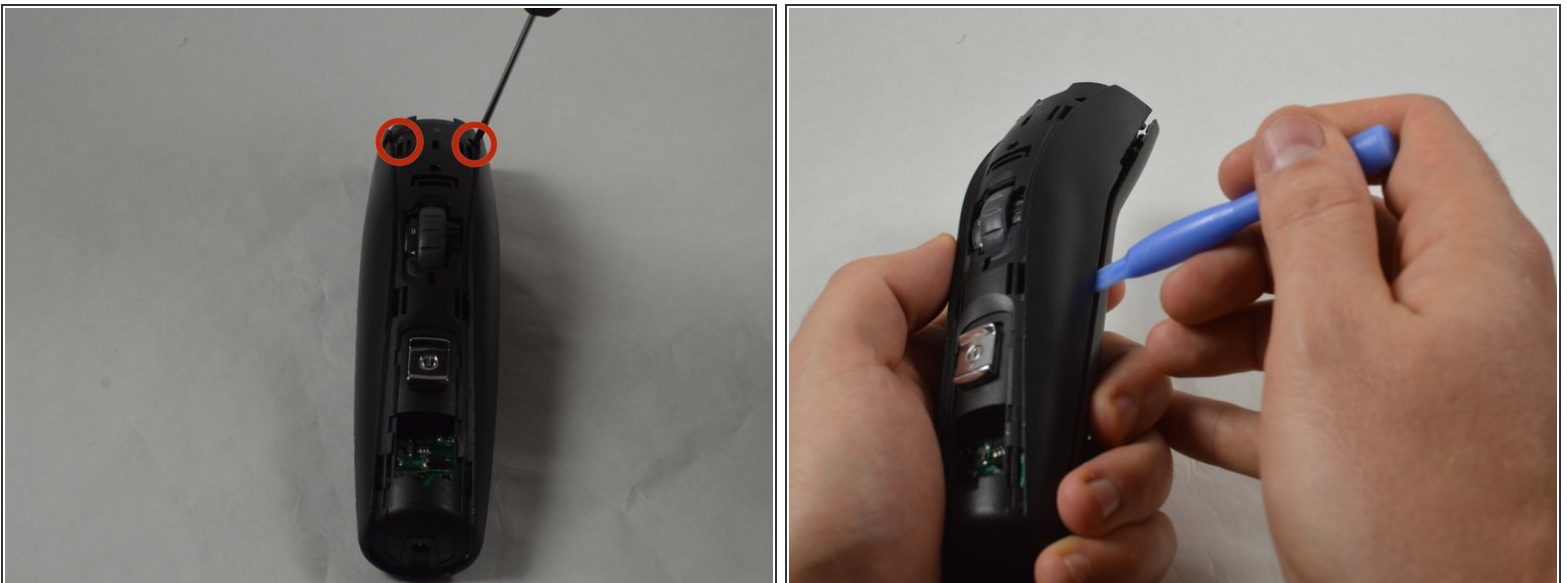
- Place the device so the back of the product is facing up.
- Remove the two 11.0 mm PH00 screws from the black plastic housing at the bottom of the device.

### Step 3 — Remove Front Cover Hardware



- Remove the chrome plated plastic piece by using the plastic opening tool to pry it from the housing assembly.
- Remove the small clear plastic piece that covers the zoom wheel numbers.

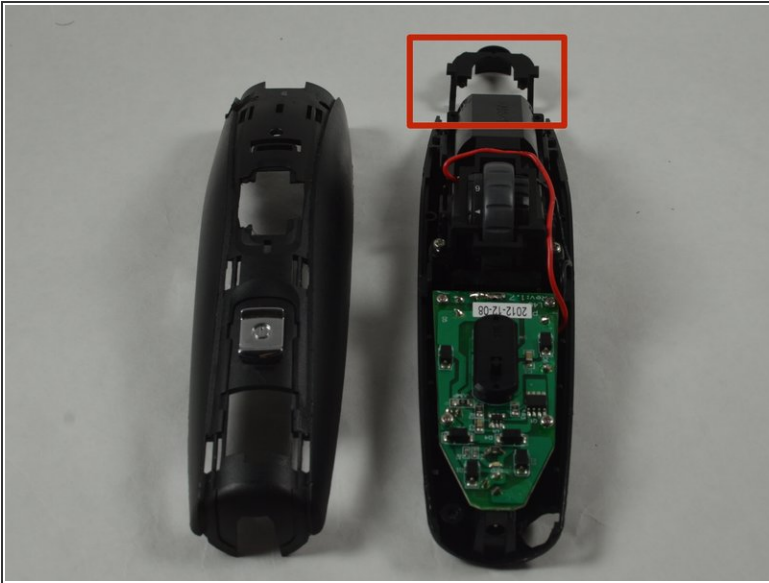
### Step 4 — Front Cover (cont.)



- Remove the two 16.0 mm PH00 screws from the front cover.
- Use the blue plastic opening tool to pry apart the two halves of the device.

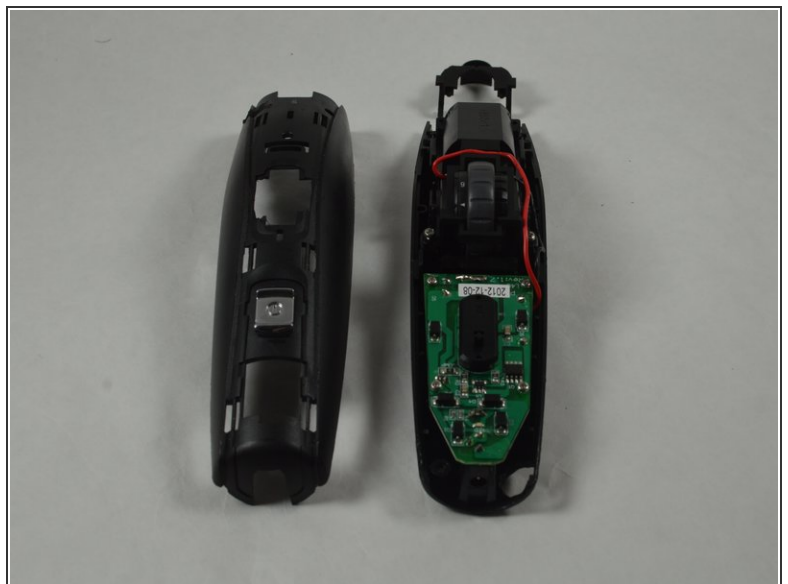


## Step 5 — Blade Button Removal



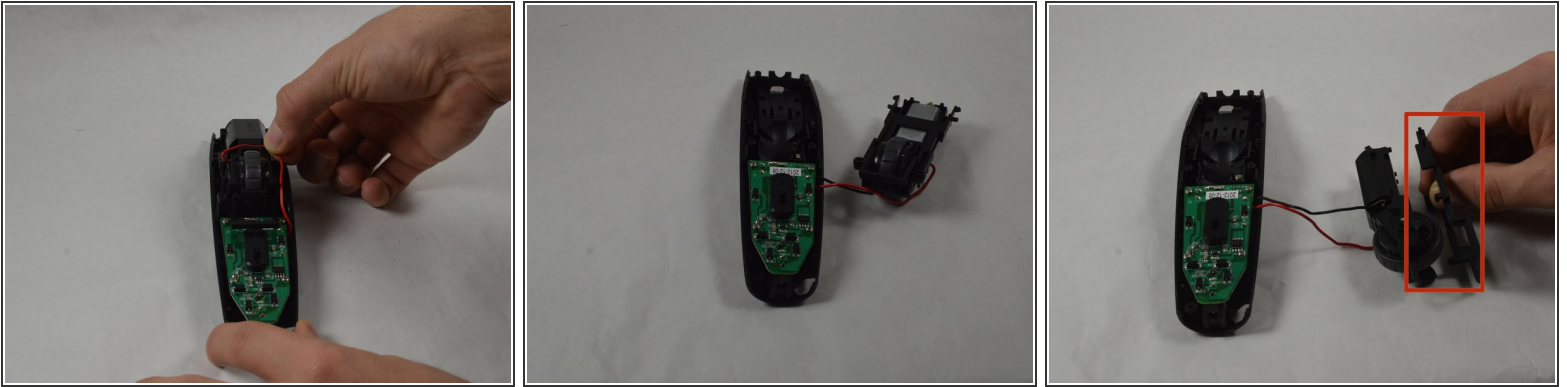
- Remove the black blade button and the two 10.0 mm springs, which are sandwiched between the cover assembly halves.
- ⓘ The blade button is sandwiched between the halves and the two springs may fall out when the halves are separated.

## Step 6 — Remove screws attaching the zoom wheel



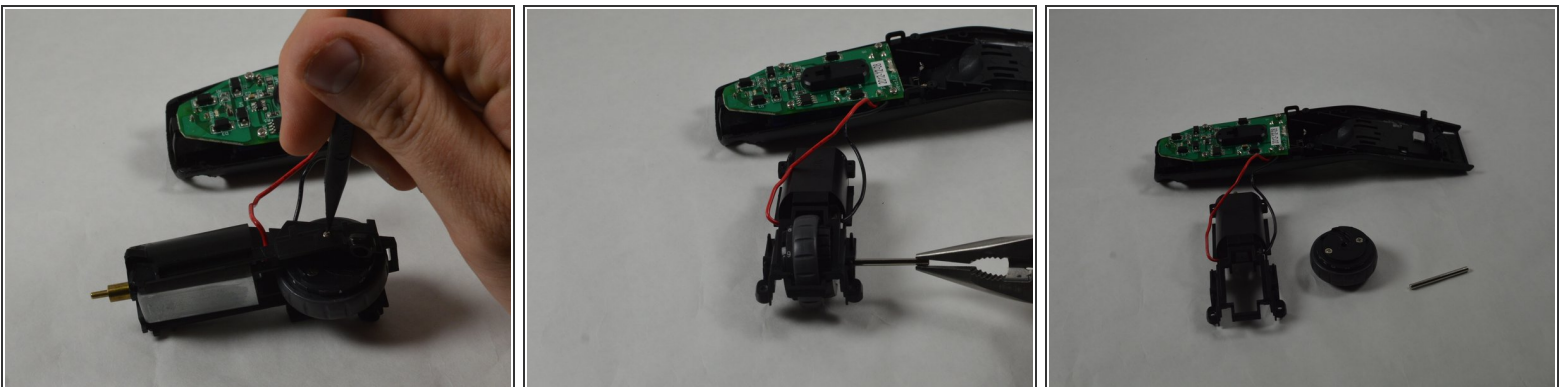
- Remove the two 11.0 mm PH00 screws that attach the zoom wheel to the plastic housing.

## Step 7 — Remove Zoom Wheel Assembly



- Remove zoom wheel assembly from housing using fingers.
- ⚠ Gently remove zoom wheel assembly because the red and black wires are attached and can easily be broken.
- ℹ This assembly also houses the motor.
- Remove the small black piece of plastic surrounding the zoom wheel. This will be referred to as the slider.
- ☑ When reassembling, make sure the pins on the slider are aligned inside the grooves of the wheel.

## Step 8 — Wheel removal



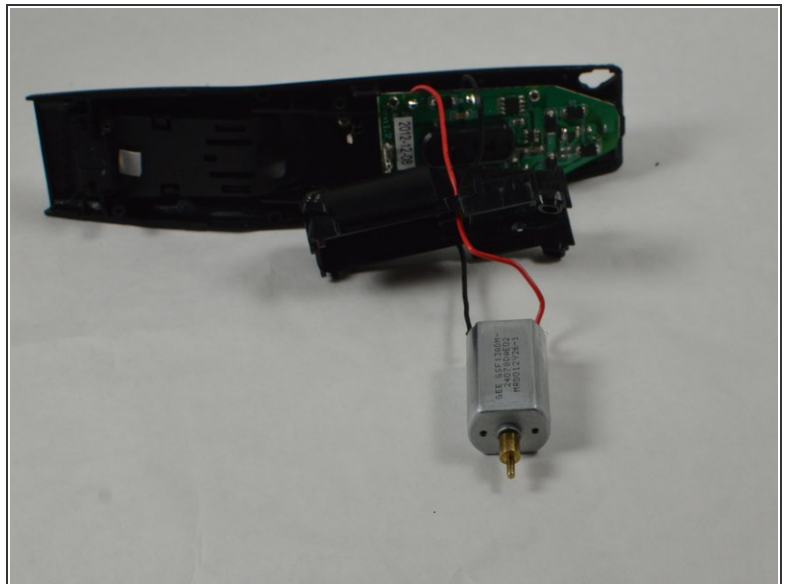
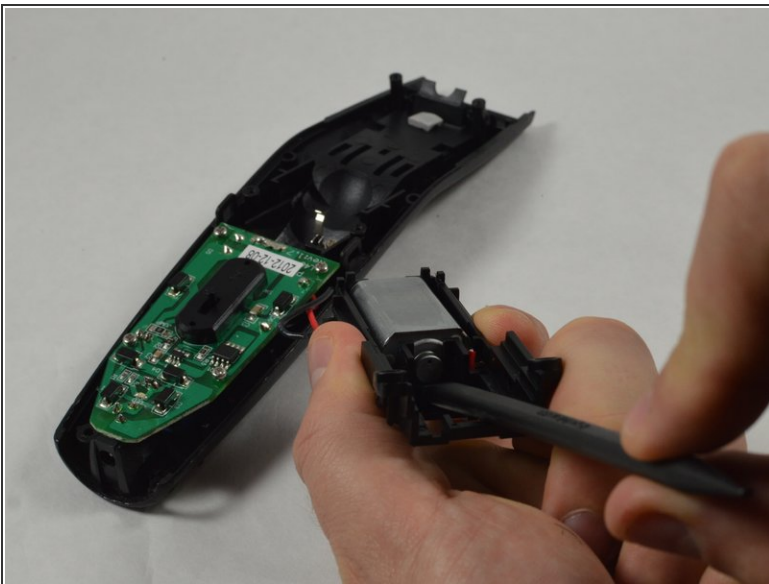
- A pin holds the wheel in place. Using a spudger (preferable metal) and a pair of pliers or tweezers remove the pin to unseat the wheel.

## Step 9 — Screw Removal



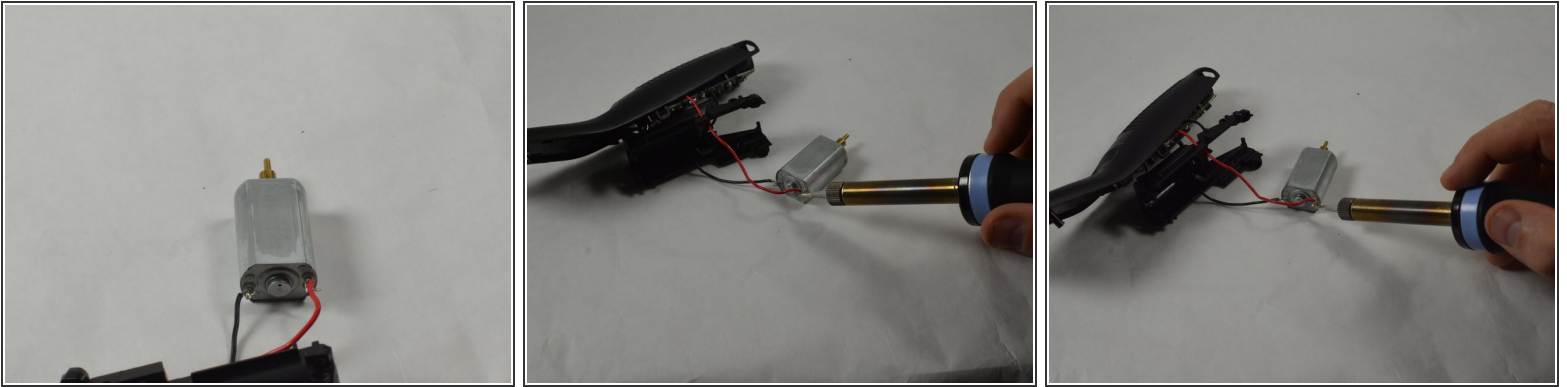
- Remove two 3.0 mm PH00 screws from the plastic housing.

## Step 10 — Remove Motor




- Remove the motor by carefully prying on the back side of the motor with a spudger.

## Step 11 — Remove Wires



- Remove the red and black wires from the motor.

 To install a new motor, the black and red wires must be soldered on.

To reassemble your device, follow these instructions in reverse order.