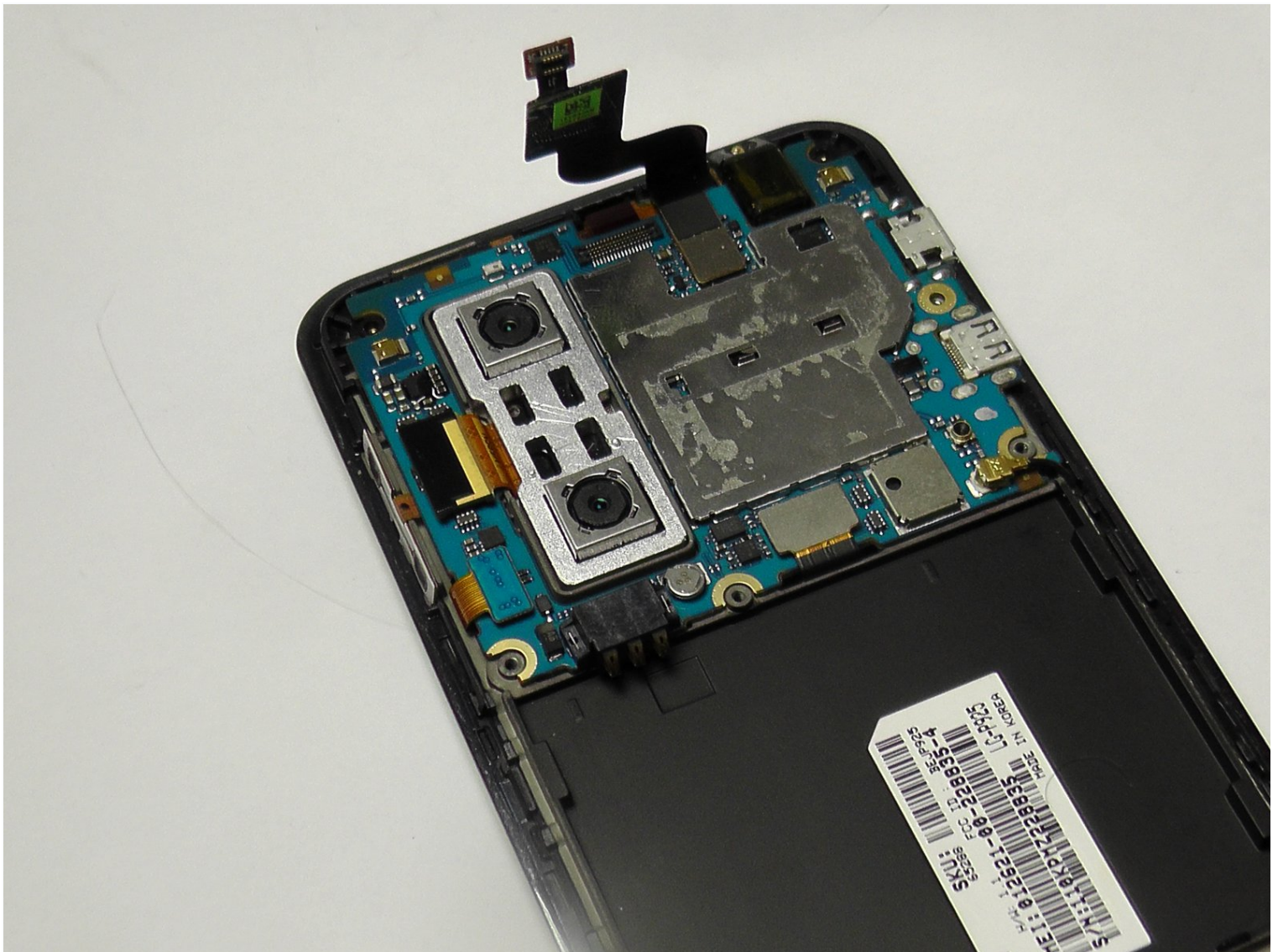




LG Thrill 4G Motherboard Replacement

For all electronics the motherboard is the is...

Written By: Luis Mena



INTRODUCTION

For all electronics the motherboard is the is central component required for operation. Owners of the LG Thrill 4G can use this guide to replace their devices motherboard, giving back life to their device.

TOOLS:

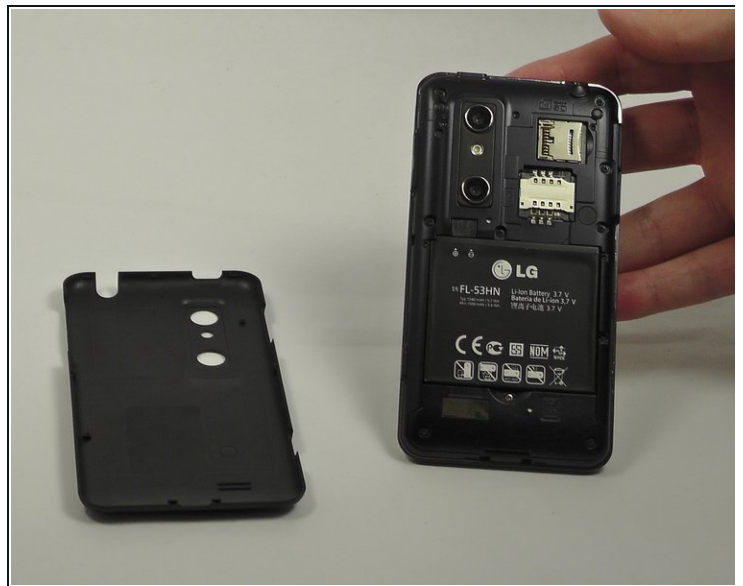
[iFixit Opening Tool](#) (1)

[Spudger](#) (1)

[Phillips #00 Screwdriver](#) (1)

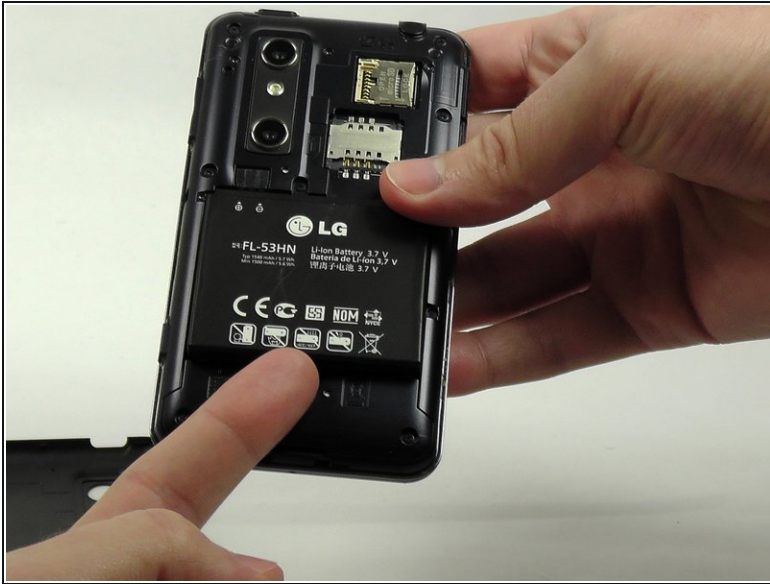
[Tweezers](#) (1)

Step 1 — Back Cover Removal



- Pry open the back cover by using a fingernail or a plastic opening tool.
- ① There is a small notch at the bottom of the cover for easy removal.

Step 2 — Battery Removal



- Remove the battery from the phone.
- ① There is a small ledge located at the bottom of the battery for easy removal.

Step 3 — Screw Removal



- Remove the three Philips #00 screws from the bottom of the phone.
- Two 5.5 mm screws
- One 4 mm screw

Step 4 — Speaker Removal



- Use your finger or opening tool to wedge the speaker out starting at the small notch at the bottom of the phone.

Step 5 — Buttons



- ① Remove the three buttons from the side and the top of the phone.
 - Power button
 - Volume button
 - 3D camera button

Step 6



- Place the plastic opening tool under the bezel at either bottom corner of the HDMI cover.

i This loosens both the HDMI and USB covers for easy removal.

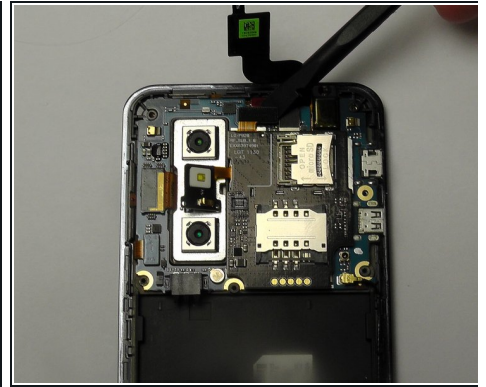
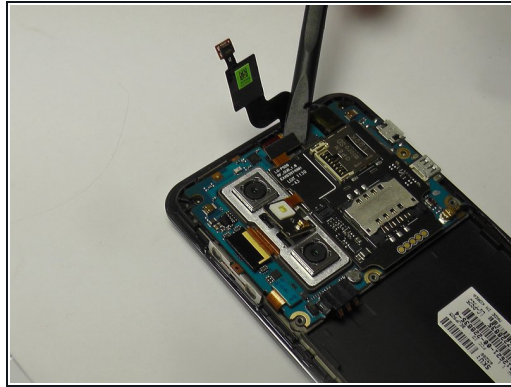
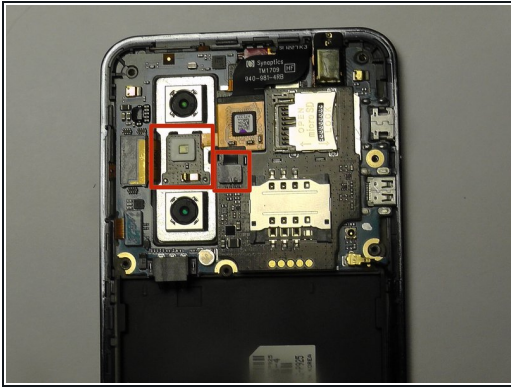
- USB Cover
- HDMI Cover

Step 7



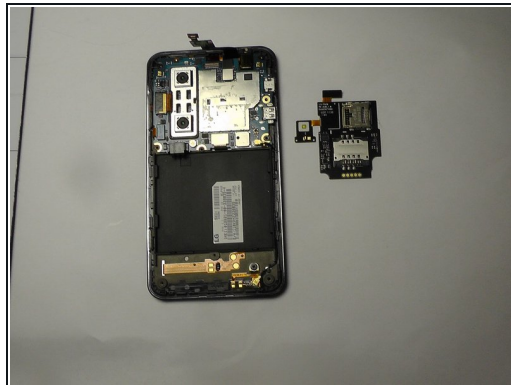
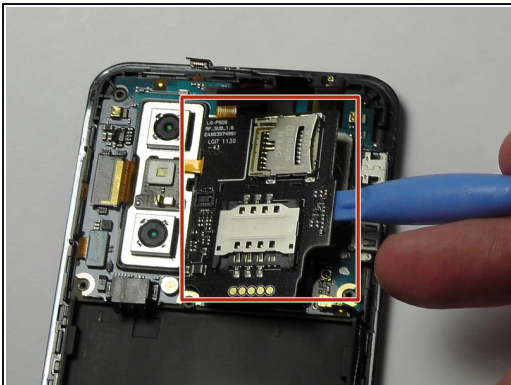
- Remove the six Phillips #00 screws within the mid-cover bezel.

Step 8 — Ribbon Cable Disconnection



- Utilize a spudger or plastic opening tool and gently disconnect the ribbon cable that is attached to the black micro-SIM card board.

Step 9 — SD/SIM Card Board Removal



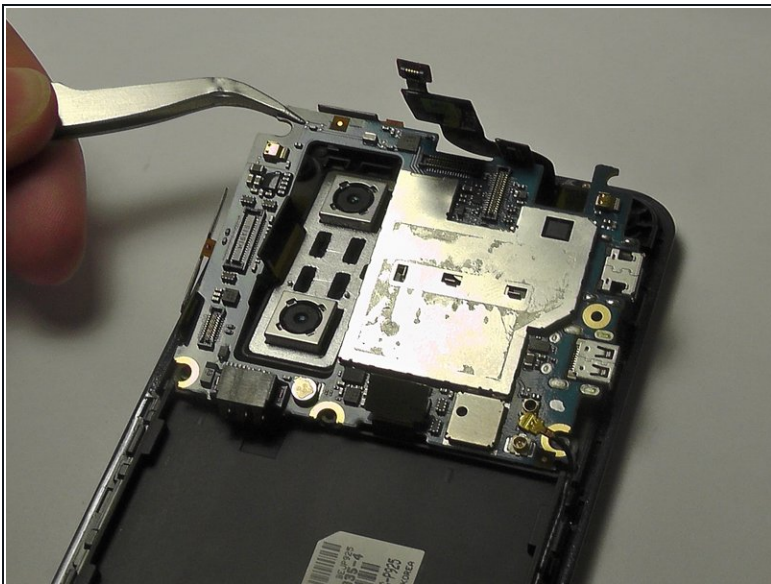
- Carefully pry the board up to detach it from its place in the phone.
 - Make sure to pry off the small tab connected to the camera unit as well.

Step 10 — Motherboard



- Use a plastic opening tool or spudger to gently disconnect the ribbon cables connected to the motherboard.
- Disconnect the antenna cable from the bottom right corner of the motherboard.

Step 11



- Use a spudger or pair of tweezers to grab the top left corner of the motherboard and gently lift it out, taking care to not damage any of the ribbon cables when removing.

To reassemble your device, follow these instructions in reverse order.