



HP Chromebook 14-Q010DX Hard drive Replacement

This guide will require removal of 1x3mm screws.

Written By: Kevin Piper



INTRODUCTION

This guide will require removal of 1x3mm screws.

TOOLS:

Phillips #00 Screwdriver (1)

iFixit Opening Tool (1)

Spudger (1)

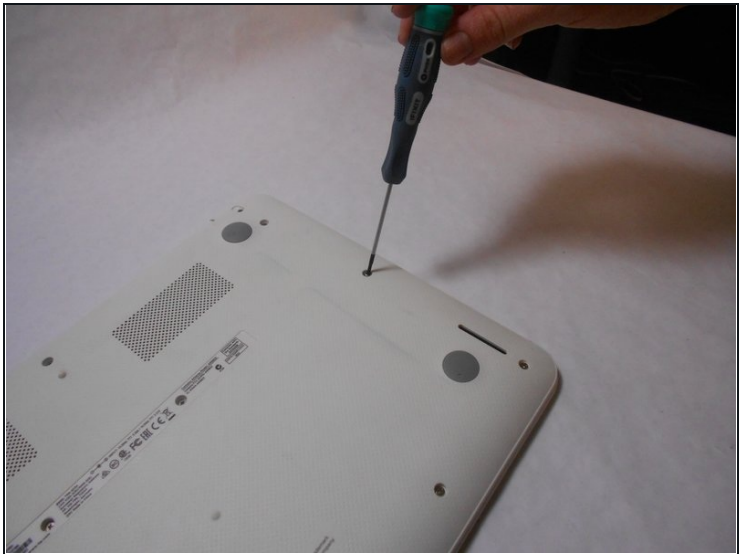
PARTS:

HP Chromebook 14-Q010DX Solid-state drive 32GB (1)

ONLY PURCHASE 1 PART. EITHER THE 32GB OR THE 16 GB.

HP Chromebook 14-Q010DX Solid-state drive 16GB (1)

Step 1 — Keyboard and Touchpad



- Flip the laptop with the base of the laptop is facing you.
- Using the #00 screwdriver, unscrew these screws.

Step 2



⚠ Warning! When prying open a laptop it could require some force, but it also has fragile connectors underneath. Use caution so as to avoid breaking these connectors.

- Start from the top right corner of the laptop and work clockwise with an iFixit opening tool or spudger to pry the keyboard from the frame of the laptop.

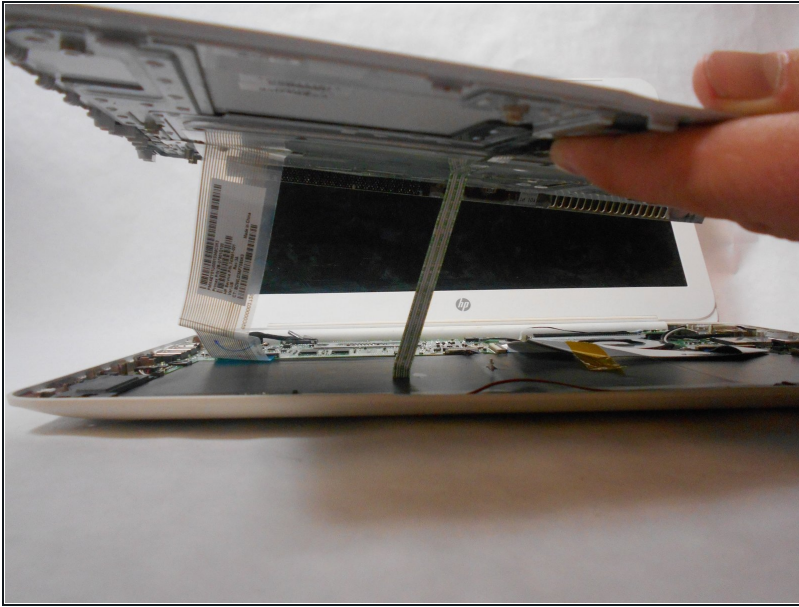
Step 3



⚠ Warning! Handle the flaps and ribbon cables with care to prevent damage.

- Gently pull the keyboard in the opposite direction of the screen, so the wires beneath are exposed.
- Lift the black flap and pull the blue ribbon gently towards you until it is disconnected.
- Lift the white flap and pull the blue ribbon towards you until it is disconnected.

Step 4



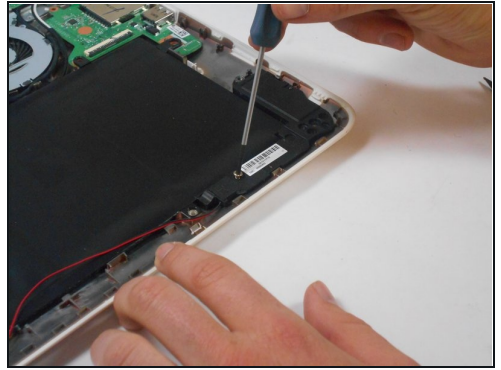
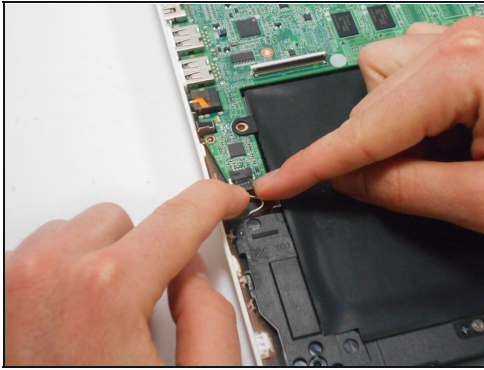
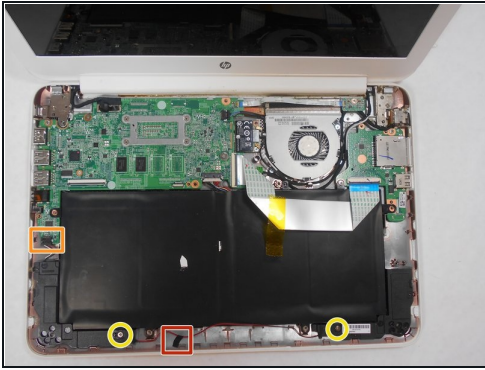
- Lift keyboard slightly and remove the strip gently to prevent damaging any parts.
- ① The tape has no function other than to keep the wire tucked away.

Step 5



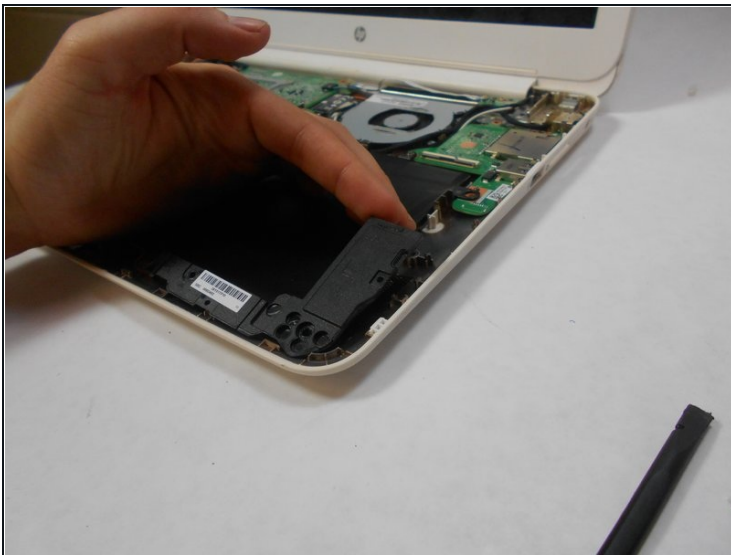
- Set aside the detached keyboard.

Step 6 — Speaker



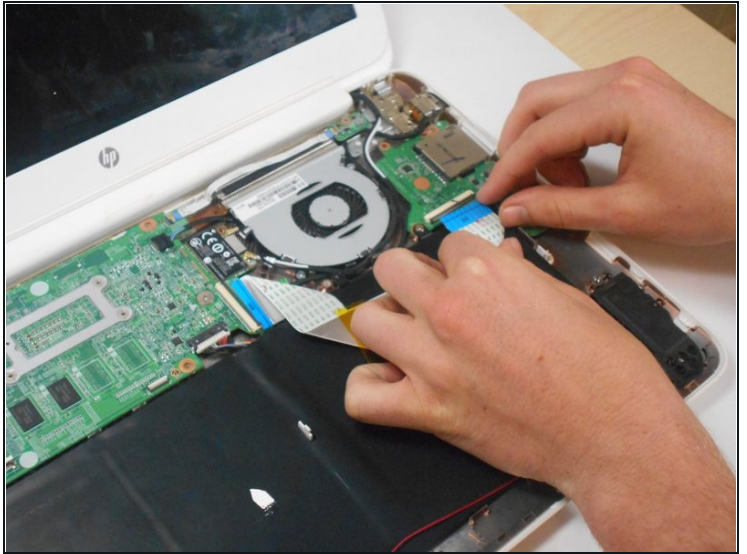
- Undo the black tape located on the bottom from the frame of the laptop.
- ⓘ The tape has no function other than to keep the wire tucked away.
- Using fingers or the spudger, slide out the black connector indicated on the left.
- Use a #00 screwdriver to remove the two screws.

Step 7



- Gently remove the speakers.

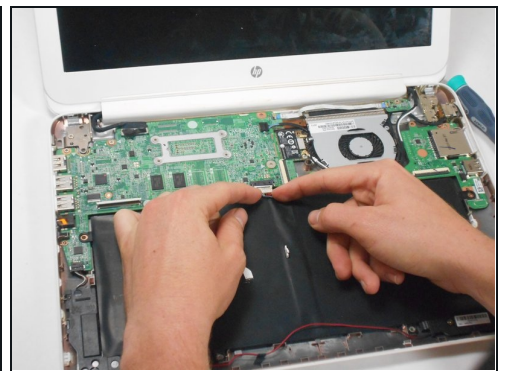
Step 8 — Battery



ⓘ Note the shape that this wire strip is resting at and that the blue tip of the strip goes into the right connector for reassembly.

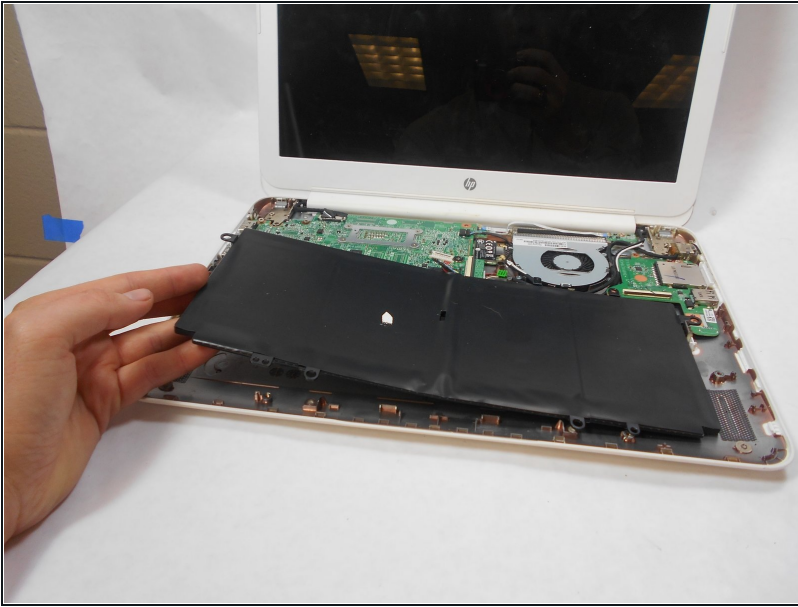
- Lift the black flaps and gently pull the strip out.
- Set the strip aside.

Step 9



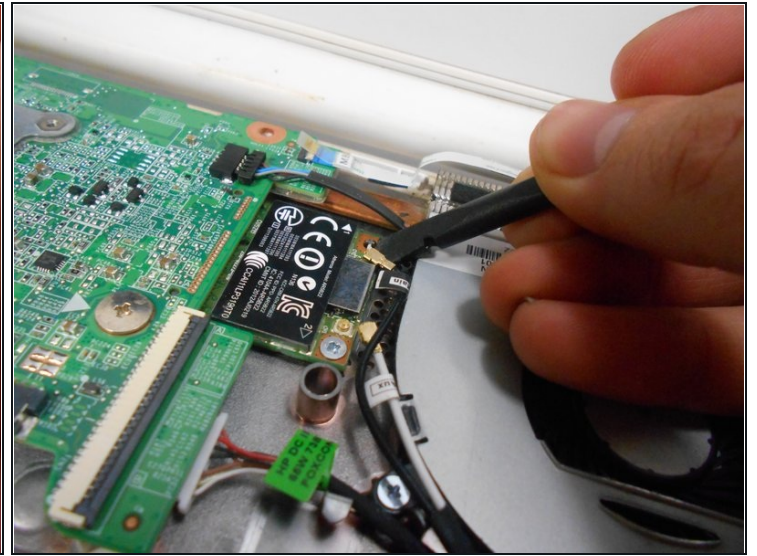
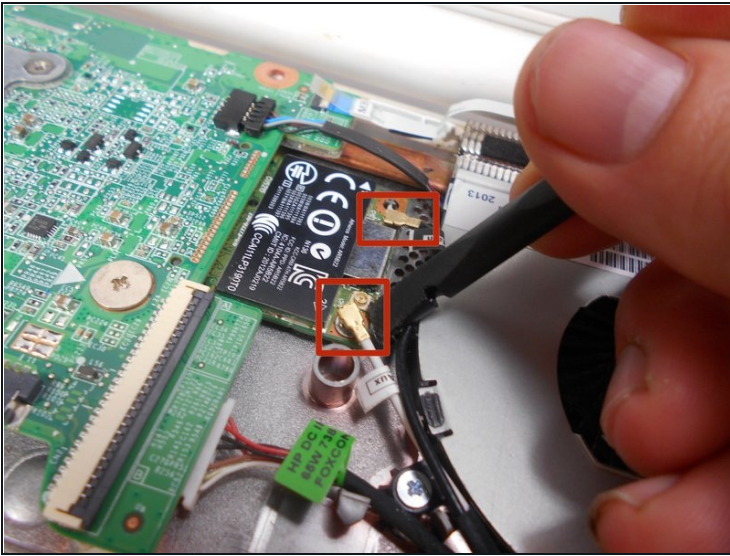
- Remove the screw.
- Use your fingers to pull the white tab out of the black slot above the battery.

Step 10



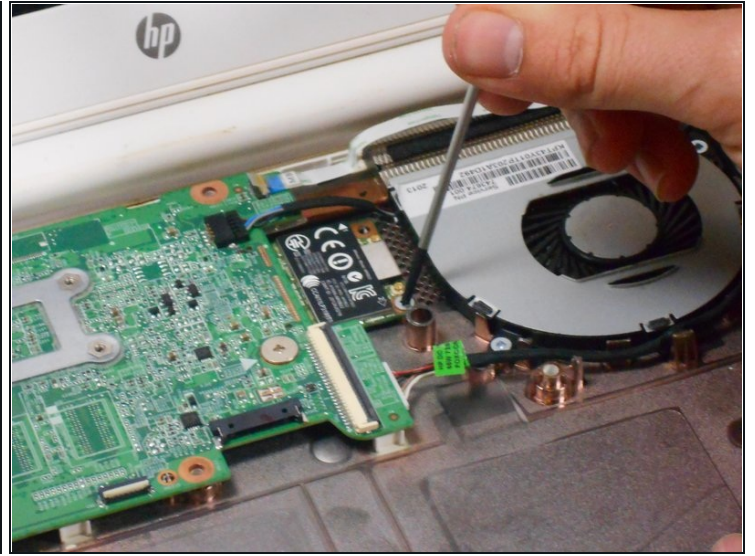
- Gently remove battery.

Step 11 — Bluetooth and Wireless Card



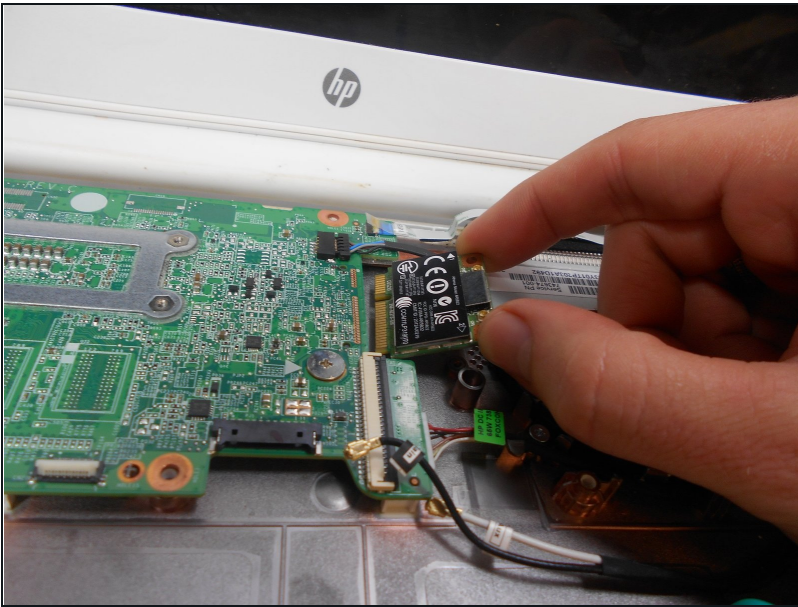
- Using a spudger, remove the white and black cables from the card.

Step 12



- Remove screw from card.

Step 13



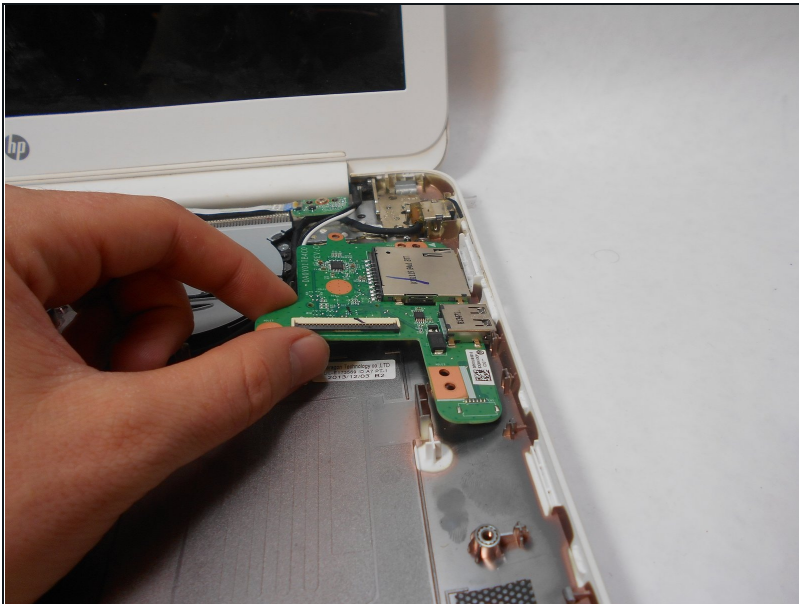
- Gently pull card at a 45° angle to remove it.

Step 14 — USB/SD card



- Remove screw indicated by the red circle at the top of the card port.

Step 15



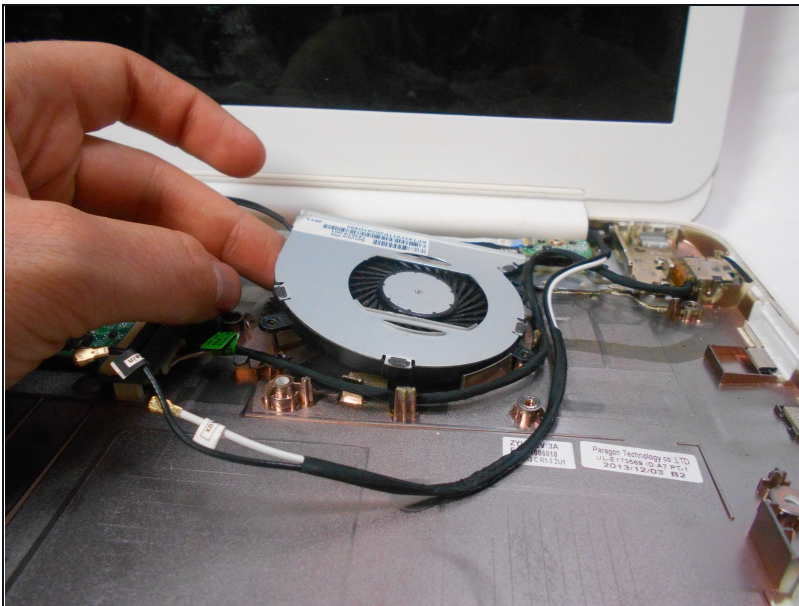
- Gently remove the USB/SD card port.

Step 16 — Fan



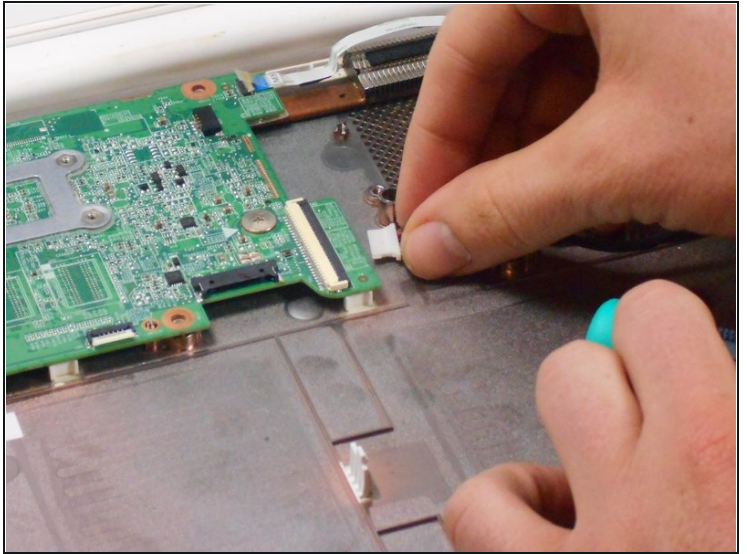
- Remove the 3 screws around the fan.
- Using your fingers or the spudger, disconnect the cable connecting the fan to the motherboard.

Step 17



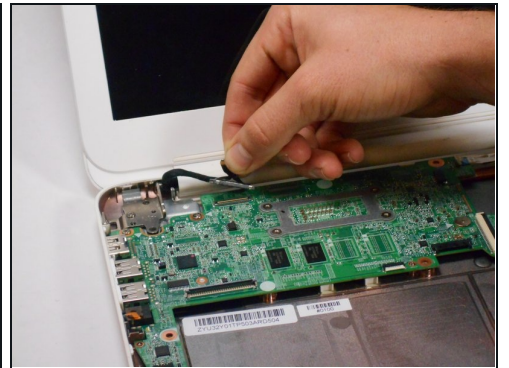
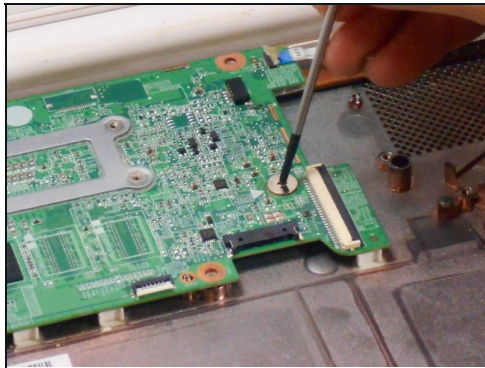
- Gently remove fan.

Step 18 — Motherboard



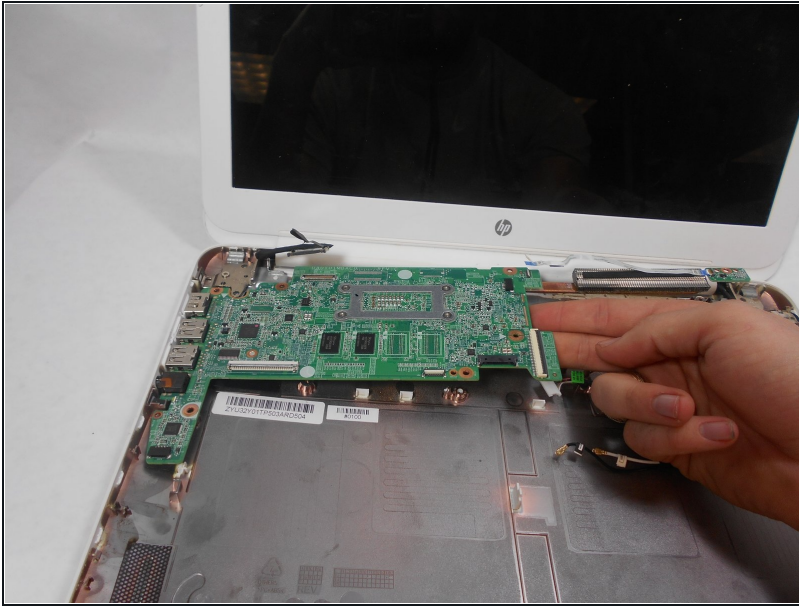
- Using your fingers or spudger, pull out the connector.

Step 19



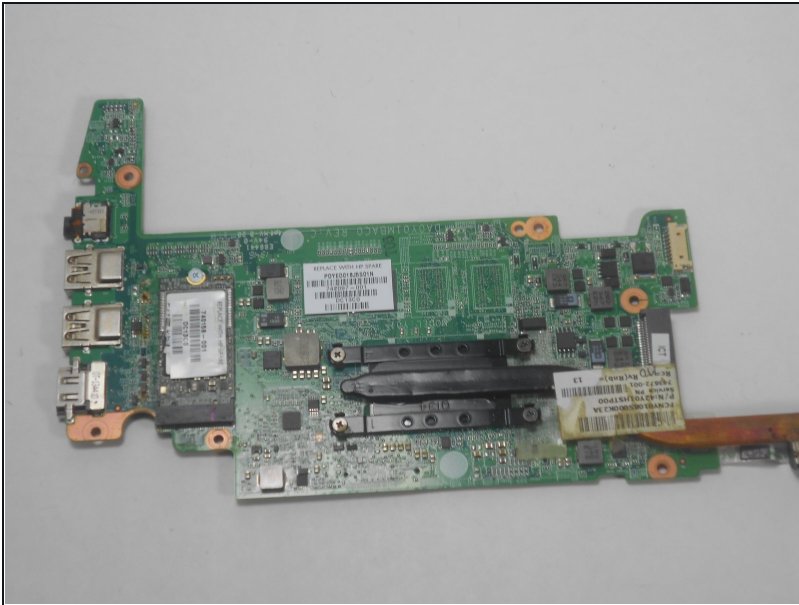
- Remove all of the indicated screws.
- Pull up on black strip to remove the monitor cord.

Step 20



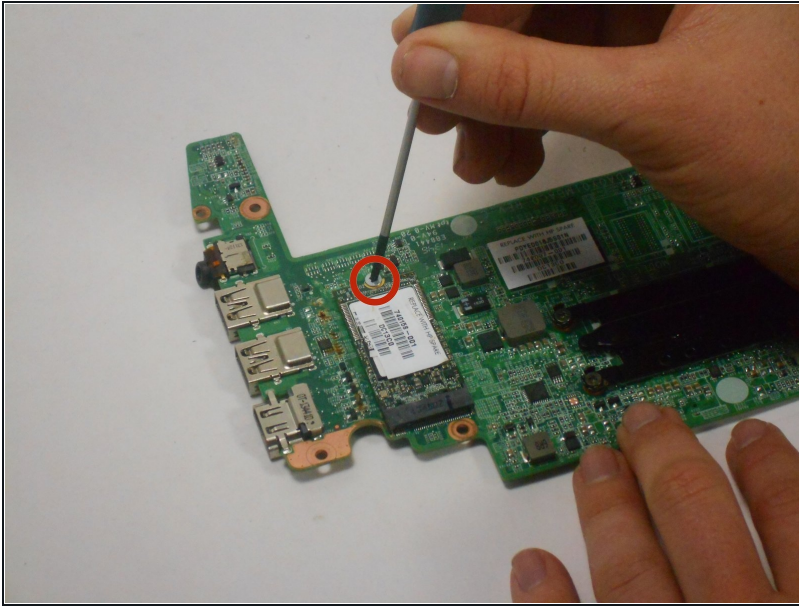
- Gently remove motherboard.

Step 21 — Hard drive



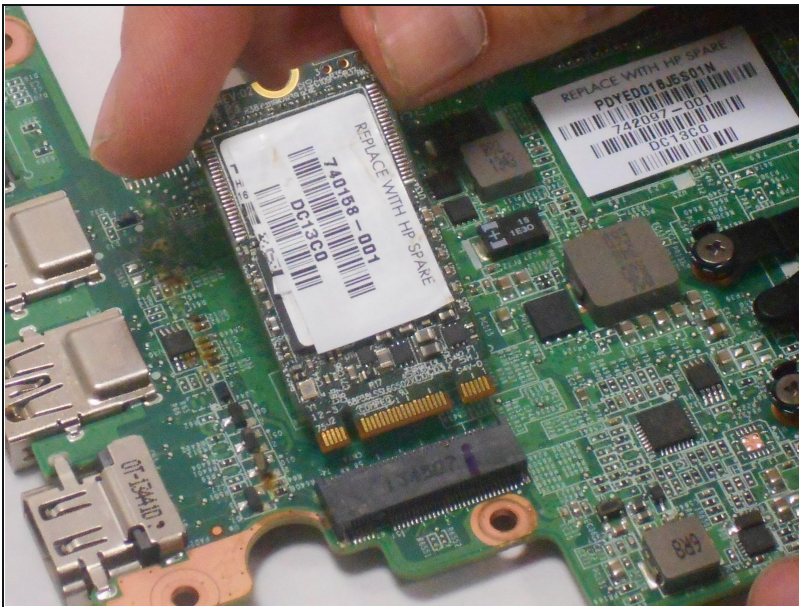
- Flip motherboard over.

Step 22



- Remove the screw indicated by the red circle.

Step 23



- Remove the hard drive by pulling the device from the black slot.

To reassemble your device, follow these instructions in reverse order.