



Sony Cyber-shot DSC-W730 Outer Case Replacement

This guide will demonstrate the proper way to remove the outer shell of the camera to get to the inside of the camera, where a lot of key replaceable components are. This is a prerequisite guide.

Written By: Jeremy Petchonka



INTRODUCTION

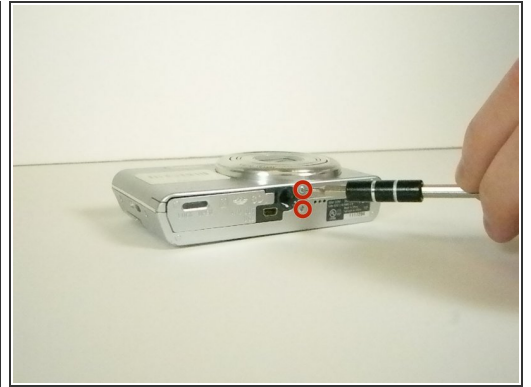
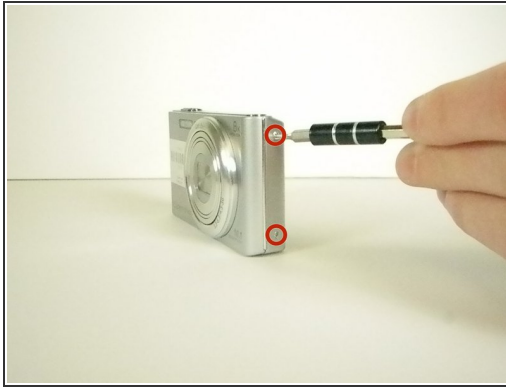
By having a Phillips 000 screwdriver, this will be an easy task to handle. There are only 6 screws that need to be taken out, then the rest of the case can be easily taken off.



TOOLS:

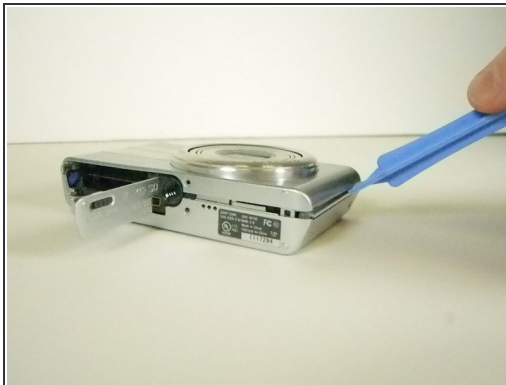
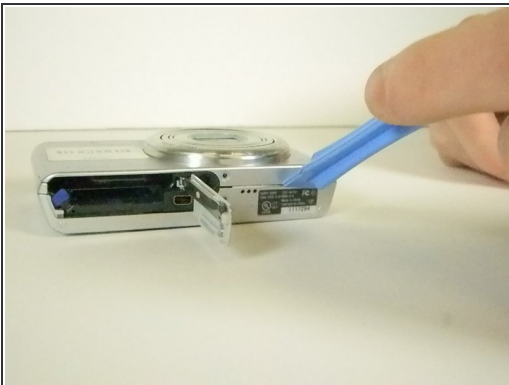
- [Phillips #000 Screwdriver](#) (1)
 - [iFixit Opening Tools](#) (1)
 - [Spudger](#) (1)
-

Step 1 — Removing the Case



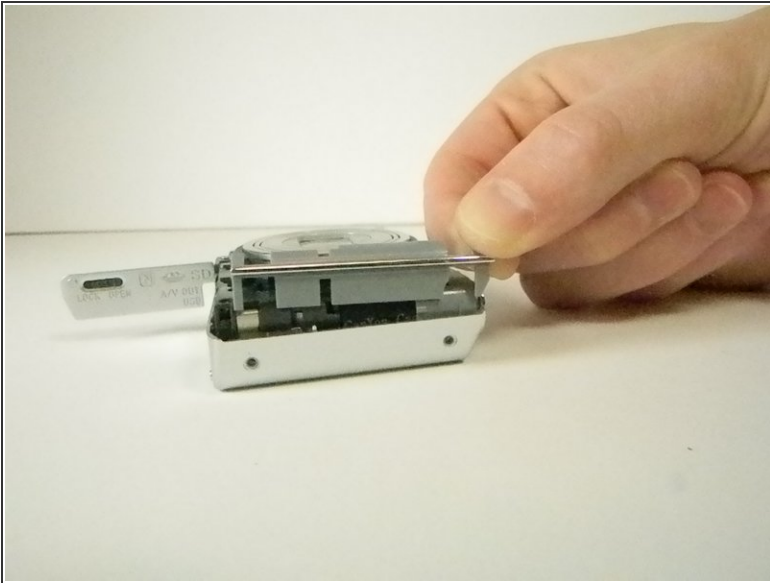
- Open the battery/memory card door and remove the 6 screws (.35cm) with a Philips 000 screwdriver. There will be two screws on the left and right sides, and two on the bottom.

Step 2



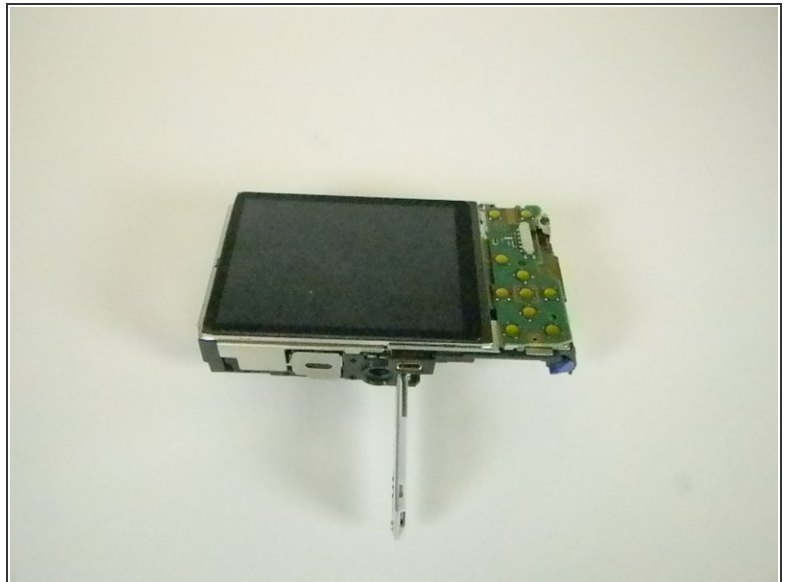
- Take off the front part of the case with a plastic opening tool.

Step 3



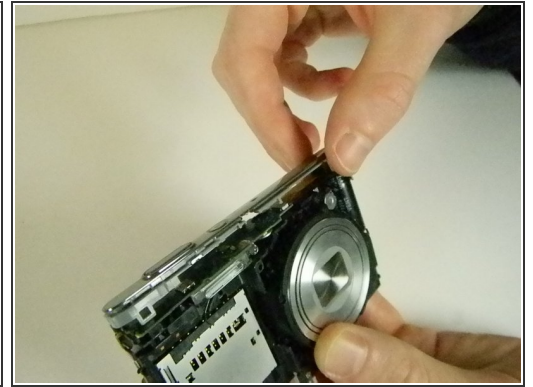
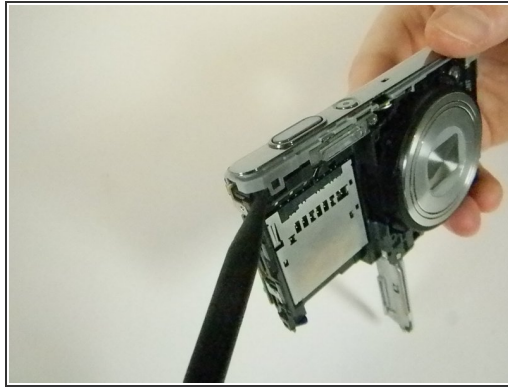
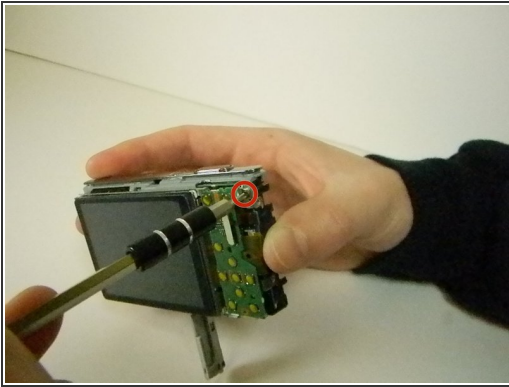
- Pull off the two silver side pieces on the left and right sides.

Step 4



- Remove the main back piece. It should easily lift off.

Step 5



- Unscrew the .45cm screw located on the upper right corner on the back of the camera. Once the screw is off, use the spudger and unclip the piece holding the top down on the upper left on the front of the camera. It should lift off with ease.

To reassemble your device, follow these instructions in reverse order.