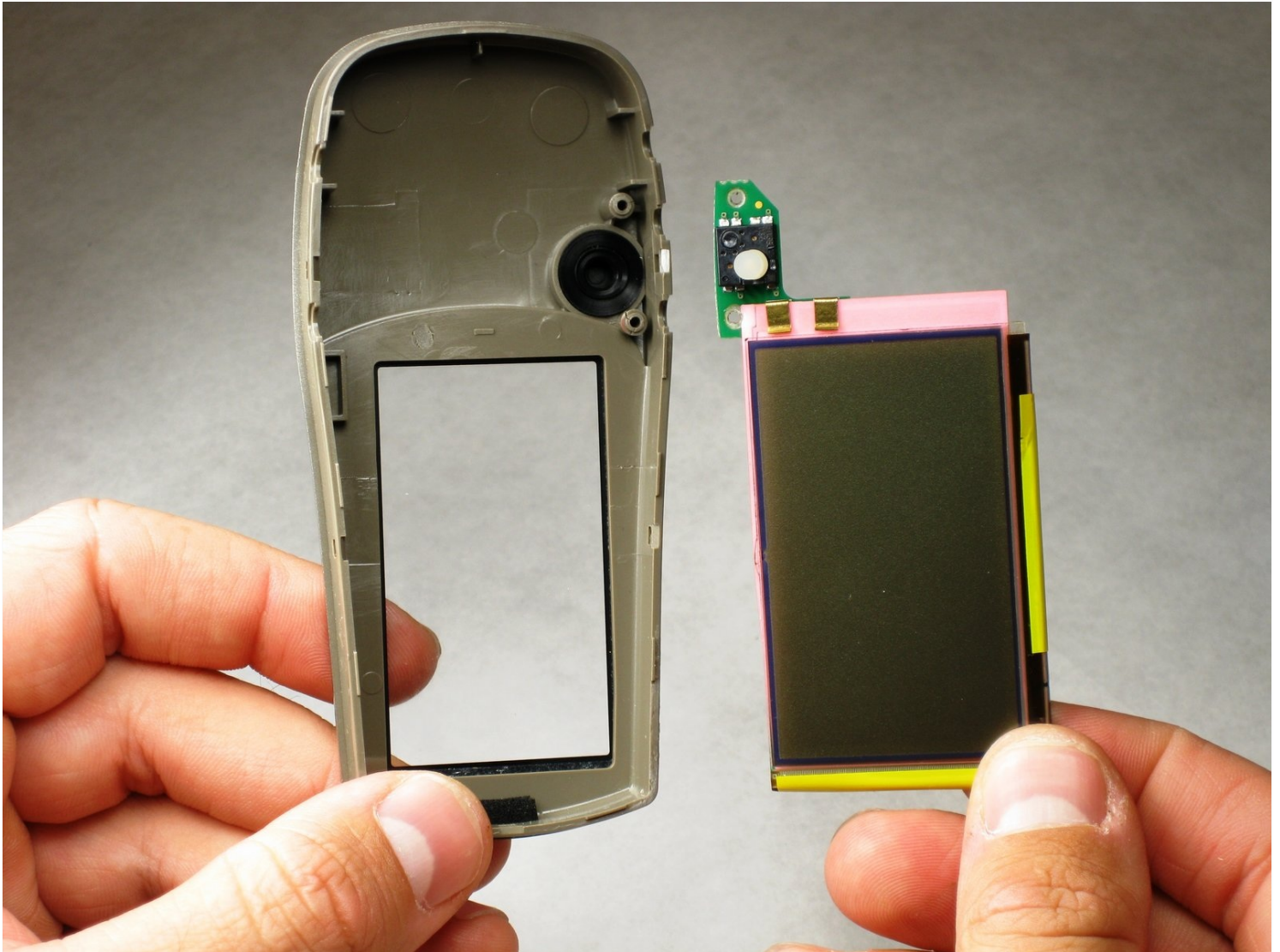




# Garmin eTrex Vista H LCD screen Replacement

These instructions will teach you how to...

Written By: Lauren Noyes



# INTRODUCTION

These instructions will teach you how to replace your LCD screen.

---

## TOOLS:

[Phillips #1 Screwdriver](#) (1)

---

### Step 1 — Removing Battery



- Flip the device to the backside, and locate the metal tab at the center of the back cover.

## Step 2



- Lift the metal tab up, and rotate it counterclockwise. This will unlock the back case cover.

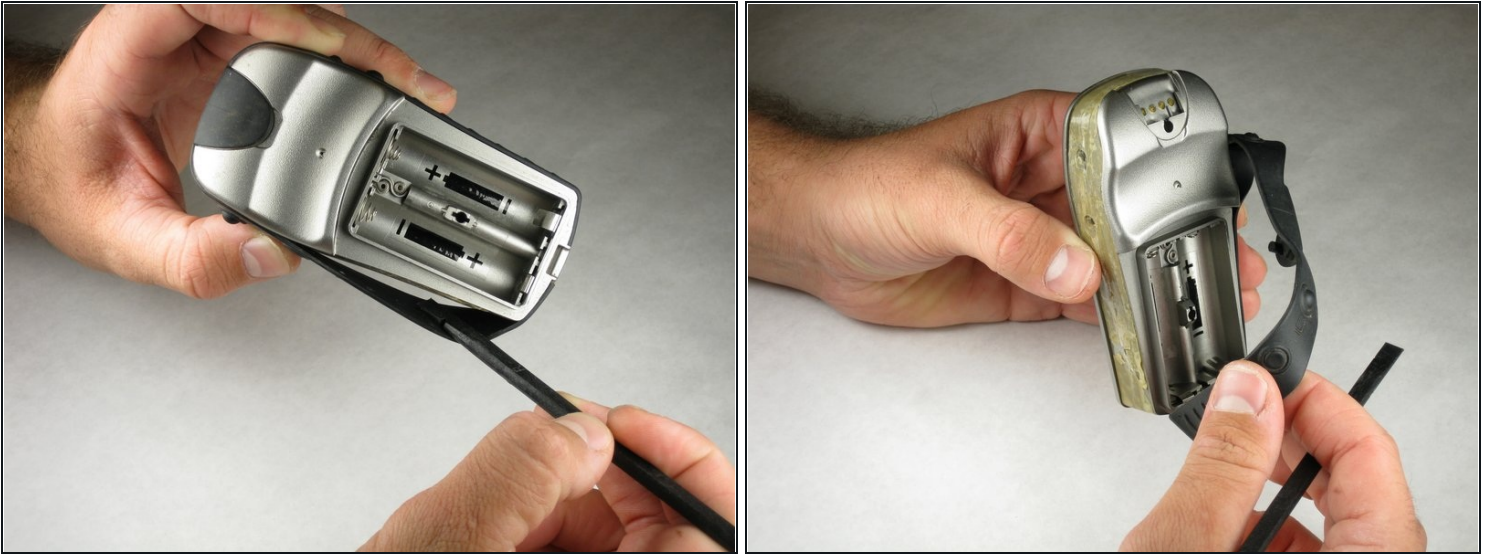
## Step 3



- Lift the battery plate off to either insert or remove 2 AA batteries.

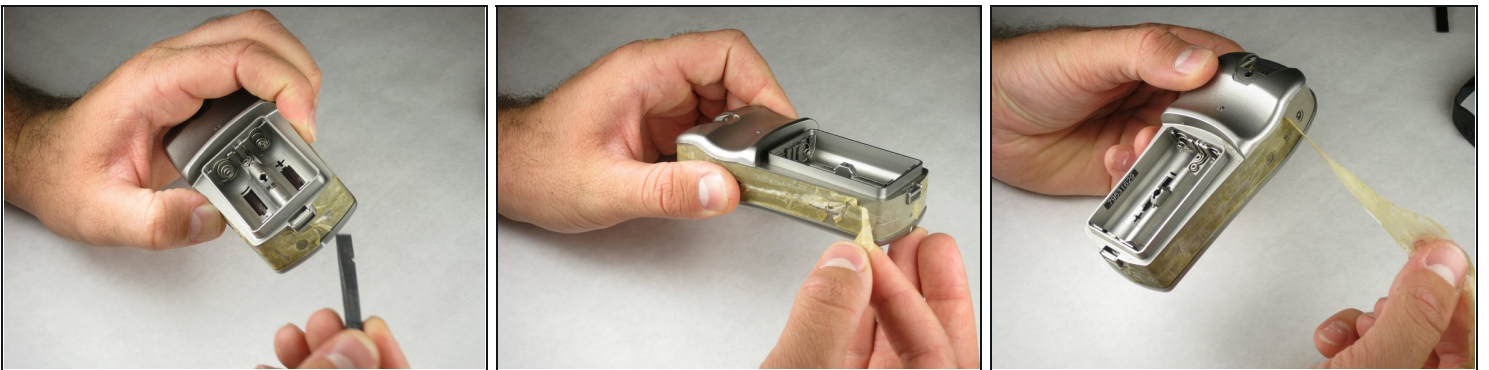


## Step 4 — Disassembling the Garmin eTrex Vista-H Outer Case



- With the wedge side of a spudger (or a small, flat head screwdriver), remove the black rubber case support from the device body.

## Step 5



- With the pick side of a spudger (or [tweezers](#)), peel the sticky tape from the device.

## Step 6

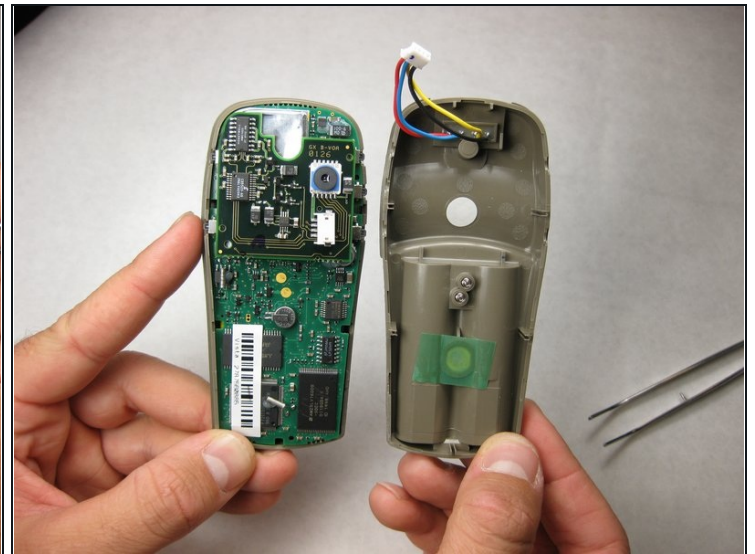


- Split the front and rear panels by inserting a small pointed tool (such as a pen point or a screwdriver tip SL1.5) in the 5 plastic tabs along the sides of the device.

⚠ Do not remove the back panels quickly. If too much force is applied, there is a wire connection that will break.

⚠ CAUTION! Be careful not to force the tabs inward. This will result in broken tabs.

## Step 7



- With tweezers (or your fingernails), carefully disconnect the wires between the PC input and the motherboard.

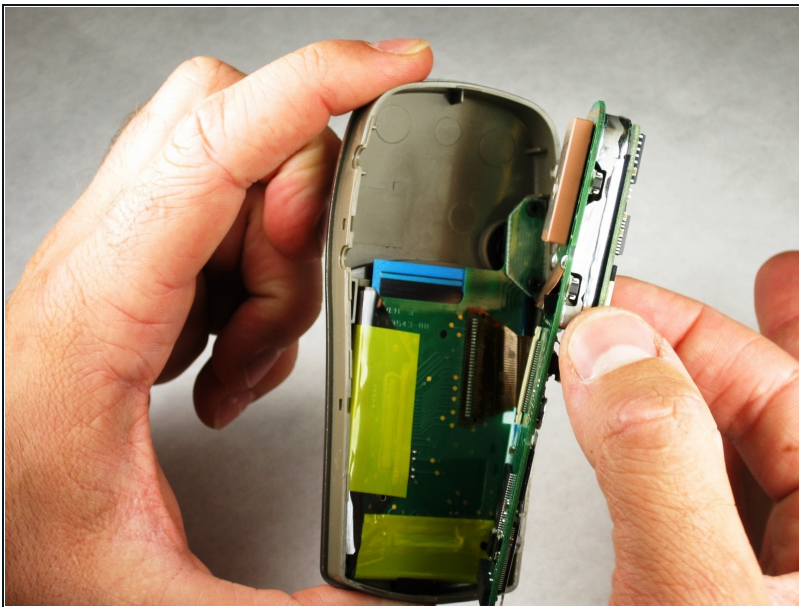


## Step 8 — Disassembling Garmin eTrex Vista H Motherboard



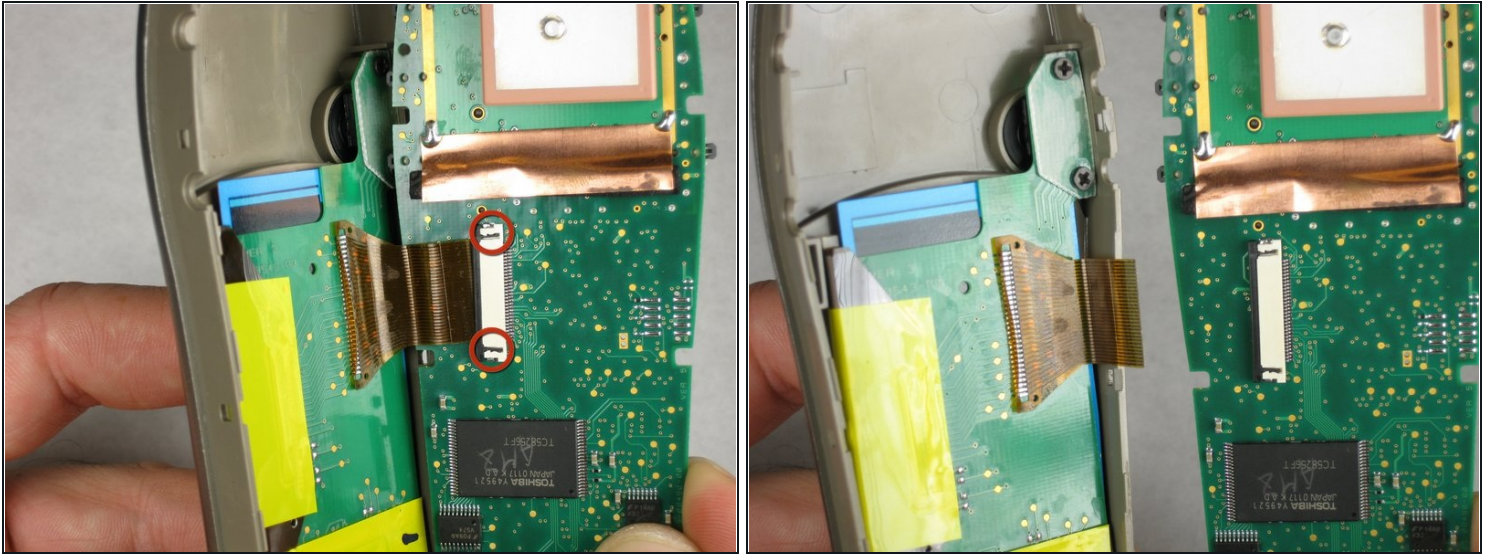
- The motherboard should look like this. If it is dirty, gently use a small paintbrush to clean it of dust.

## Step 9



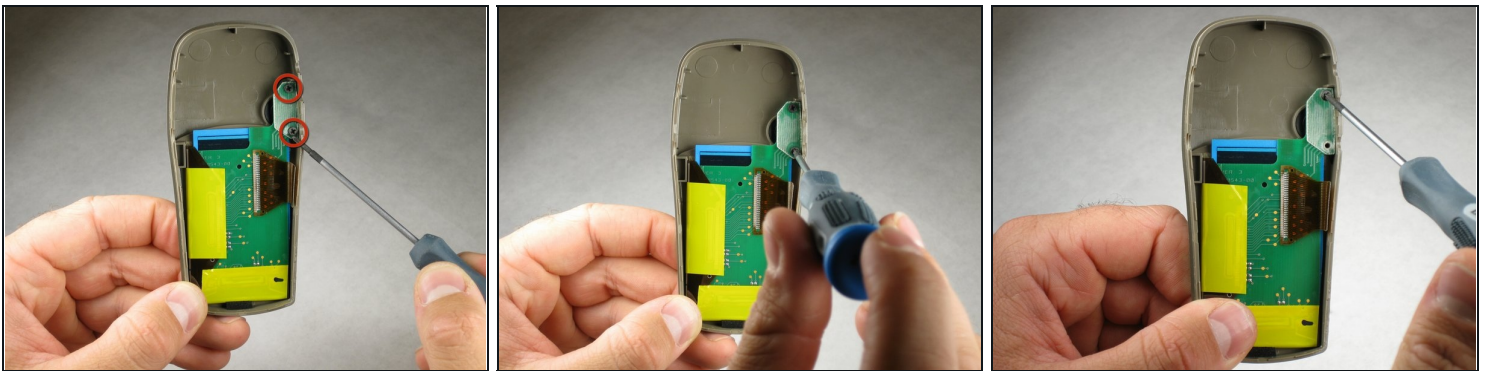
- ✦ There are no screws holding the motherboard in place.
- ⚠ Carefully lift the motherboard from the case.

## Step 10



- With the pointed end of a spudger (or the small end of a Philips #00 screwdriver), gently unhook the small black tabs by pressing into the interlocking hooks that are sunk into the white wire connector.
- Gently pull the wire ribbon from the white connector.

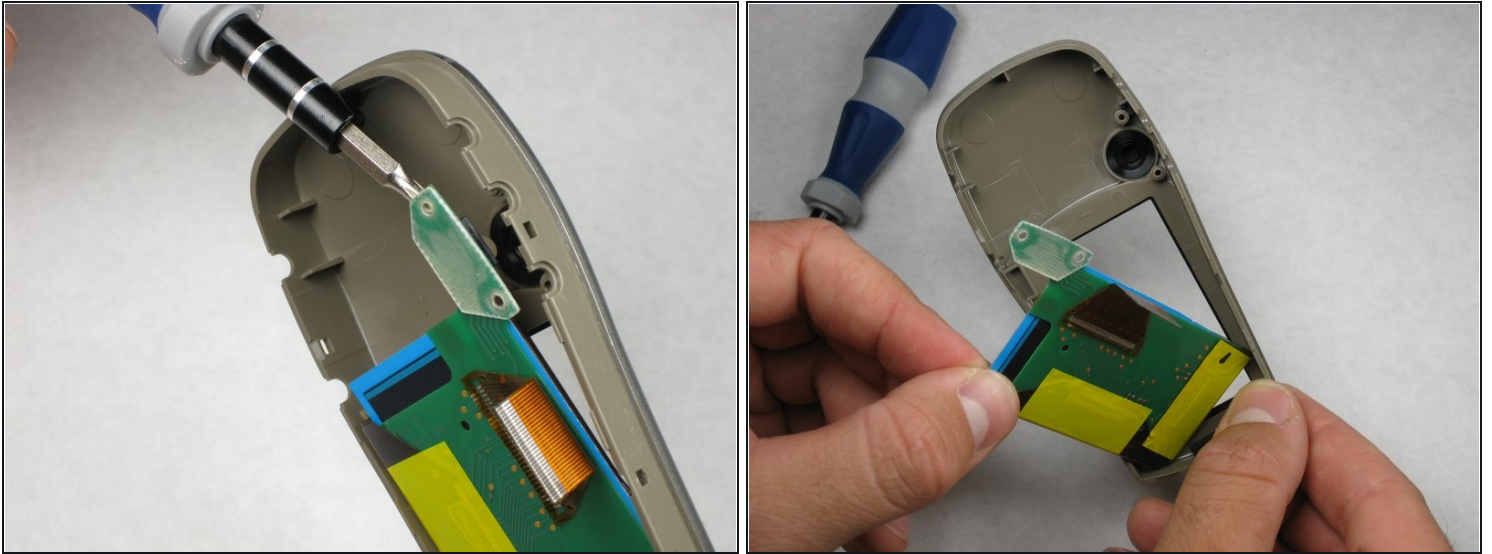
## Step 11 — LCD screen



- After removing the motherboard, locate the two #1 Philips screws.
- Carefully remove both screws.



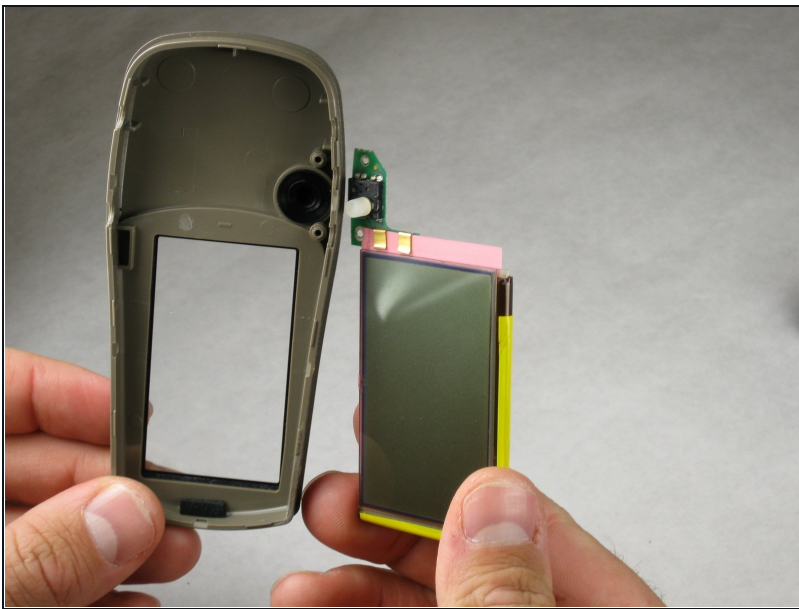
## Step 12



- Gently remove the LCD screen from the case by lifting the area that held the two #1 Philips screws.

⚠ Do not remove the LSC screen by lifting the sides, only the area that held the two #1 Philips screws.

## Step 13



- Insert the new LCD screen in the device.



---

To reassemble your device, follow these instructions in reverse order.