

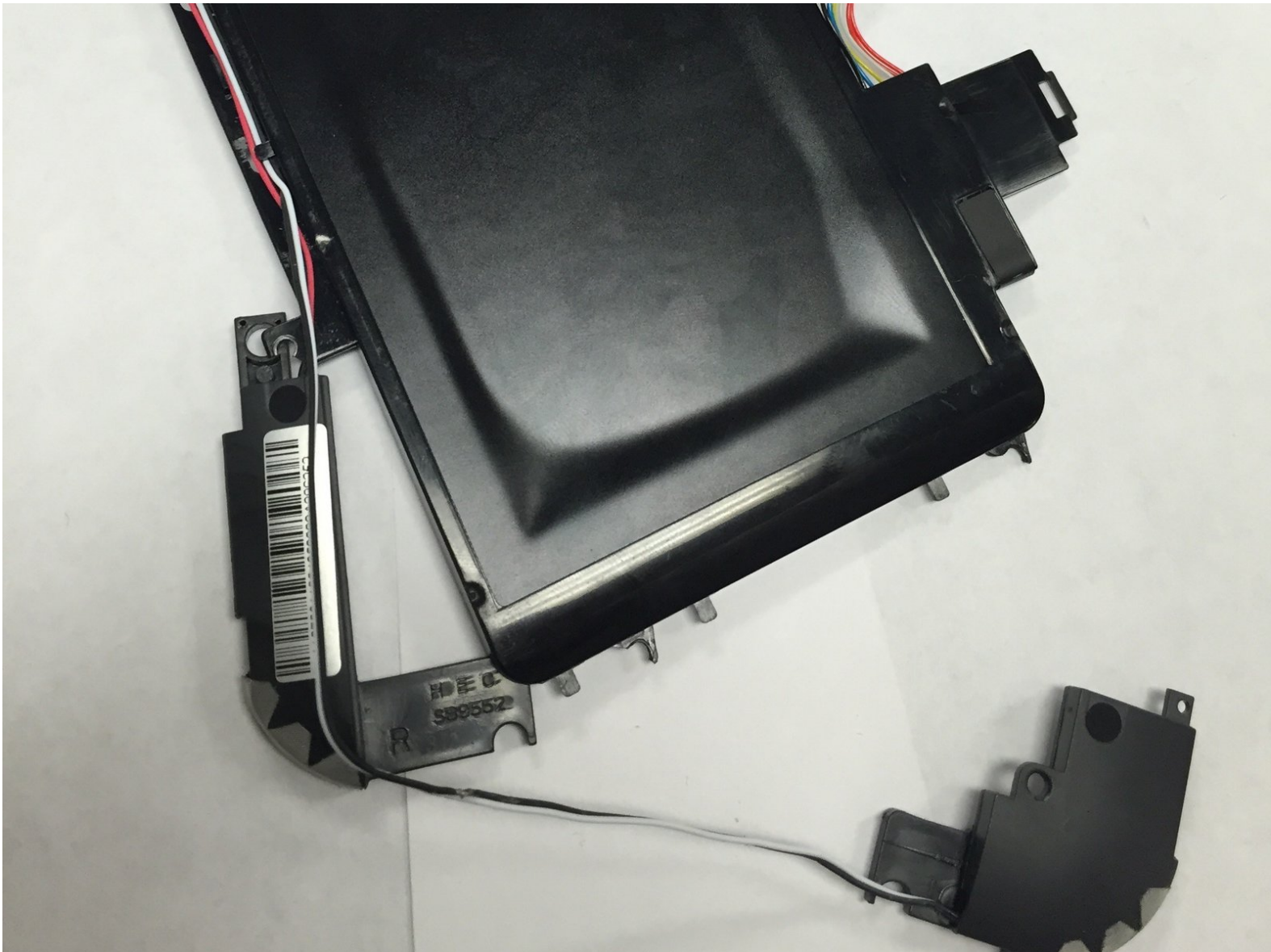


How to Replace the Battery of a Toshiba Excite

7

How to replace the battery of a Toshiba Excite 7.

Written By: Sean Ulch





TOOLS:

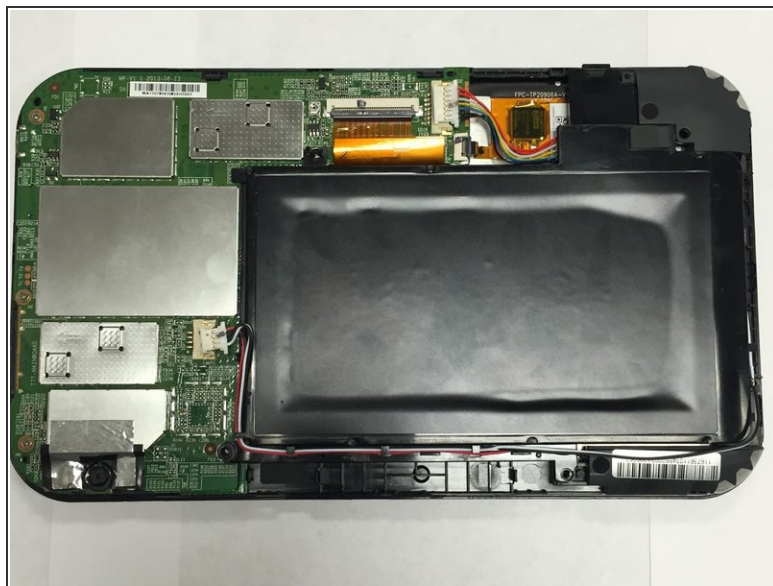
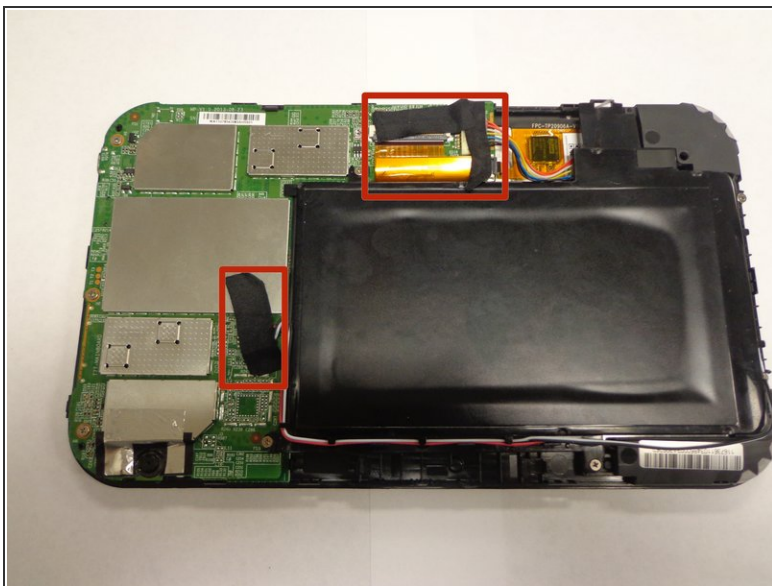
- [64 Bit Driver Kit](#) (1)
- [Magnetic Project Mat](#) (1)
- [Tweezers](#) (1)
- [iFixit Opening Tools](#) (1)

Step 1 — Battery Removal



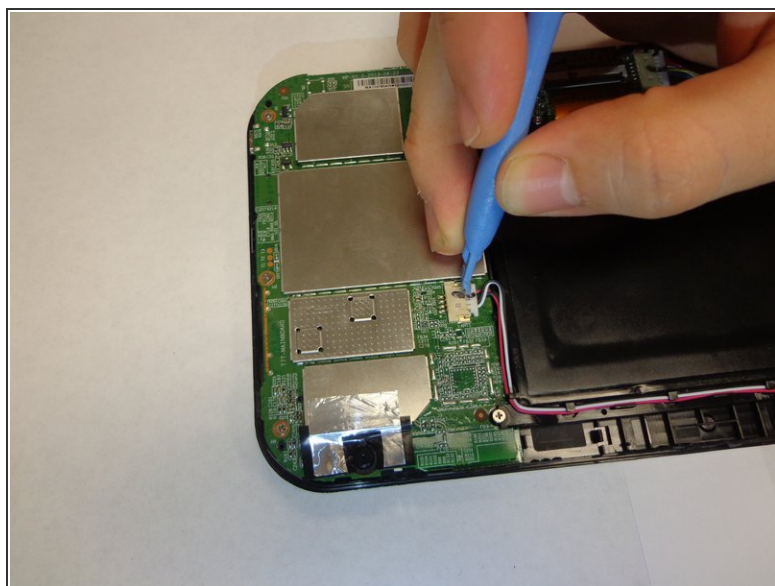
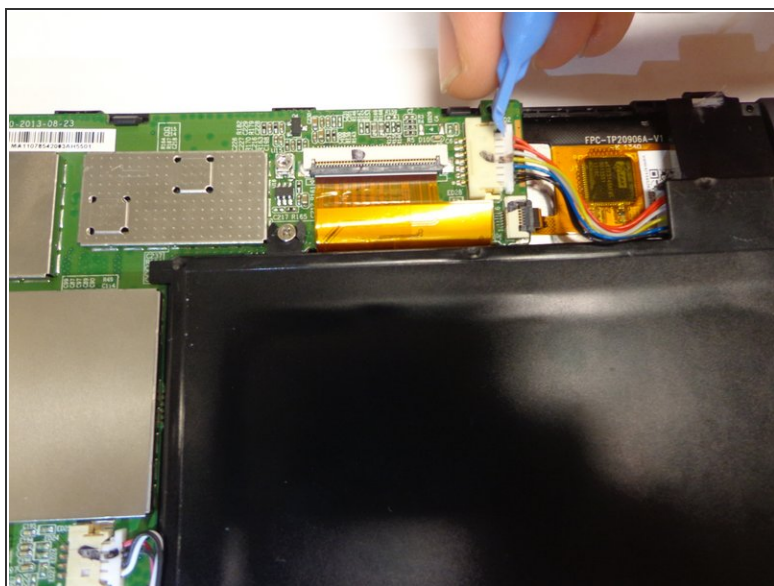
- Remove the back cover.
- Work your fingernail or flat object under the cover's seal. Start at the top right corner just above the front facing camera this is the device "Weak Spot".
- After you pry open the first clip slide the flat object along the perimeter of the cover until the cover is removable. You should hear the clips pop open.

Step 2 — Remove Tape



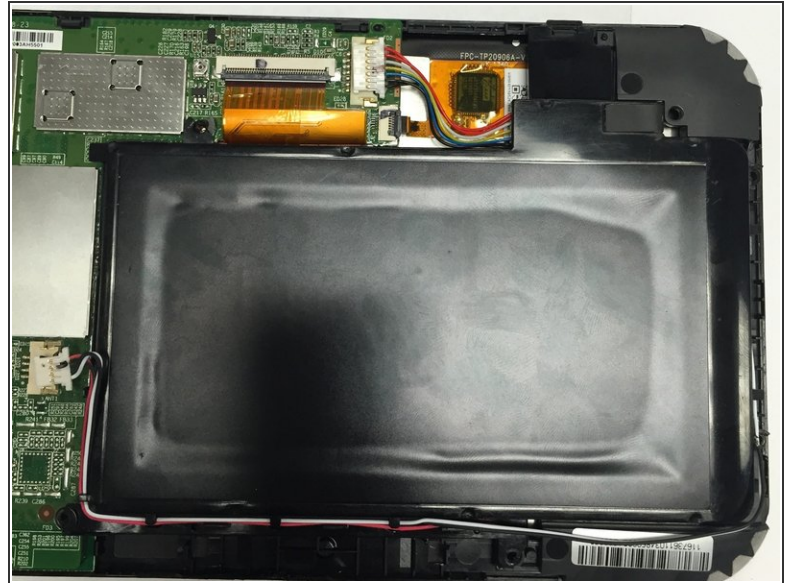
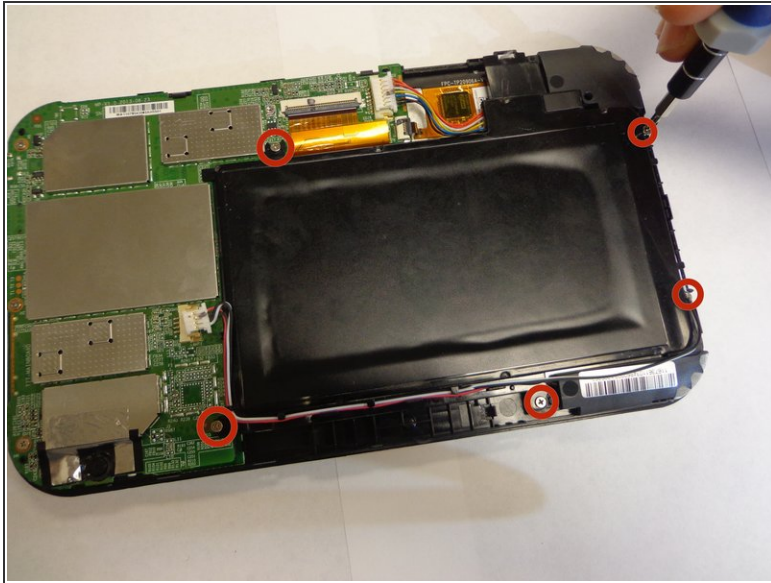
- Remove any black tape from the device.
- Keep the tape, you will need to put it back on when you are done.

Step 3 — Unplug Wires



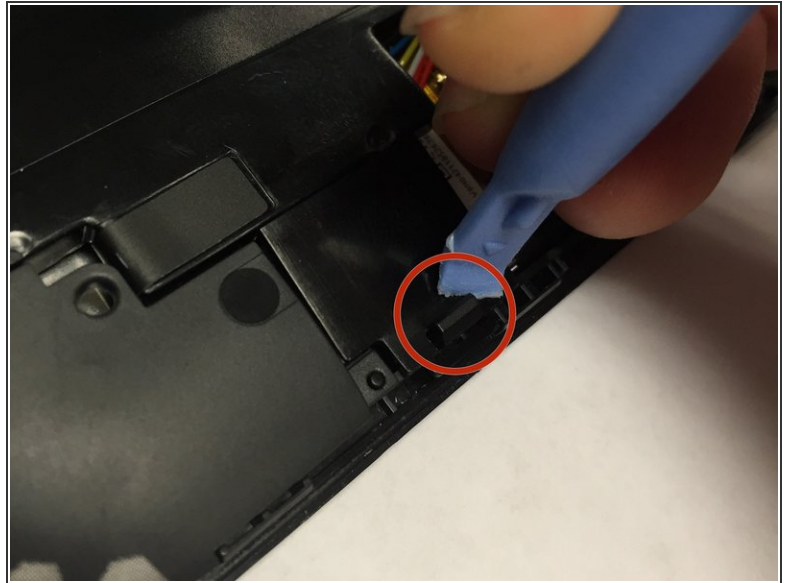
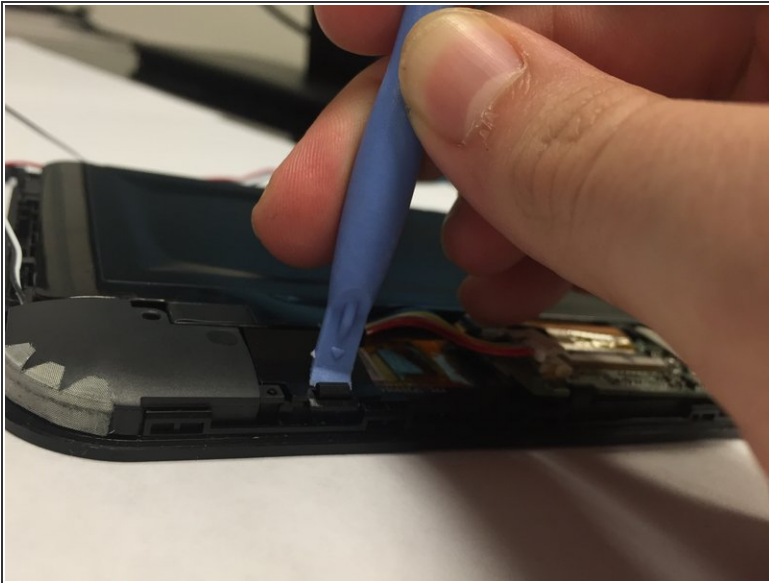
- Unplug the wires from the battery.
- ⓘ The battery is the black rectangle in the middle of the device. The device has two wiring harnesses attached to it, one just above the battery and one just to the right.

Step 4 — remove screws



- Unscrew the battery from the device.
- The device has 5 screws to remove, keep the screws.

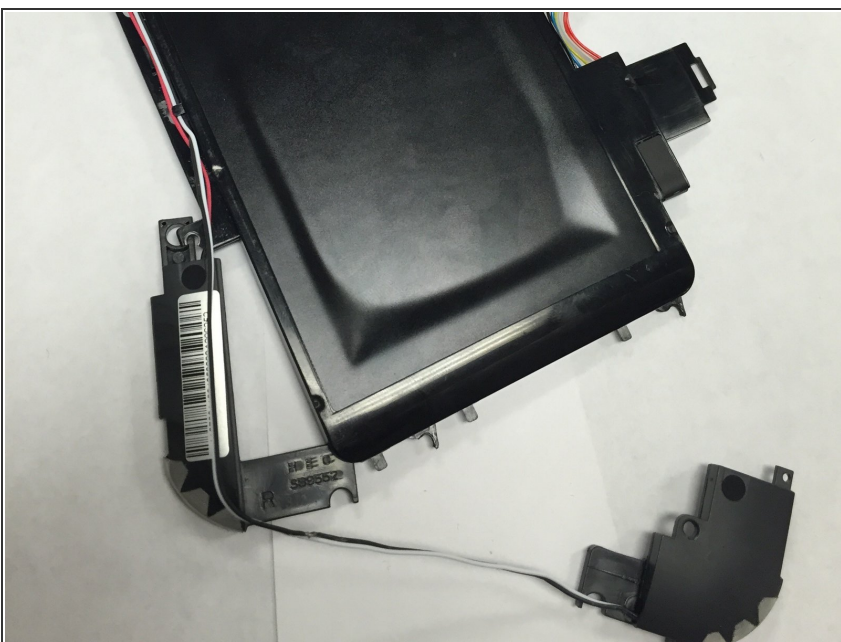
Step 5 — Unclip and remove battery



i The battery has one clip you will need to remove. The clip is located at the bottom right corner of the battery just above the right speaker. The speakers and wires are not secured to the battery, they may fall off.

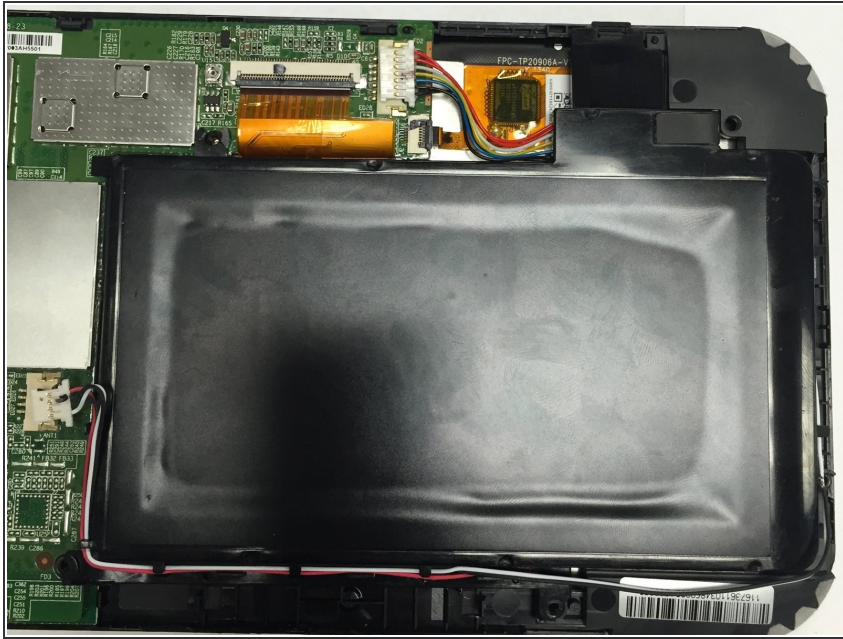
- Push the clip back then lift the battery up.

Step 6 — Removing the Speakers From the Battery



- Remove the speakers from the battery. The speakers are the plastic devices with the mesh on them.
- Wires are wedged under a couple of clips on the battery; they run along the bottom and left edges of the battery.
- Lightly coax the wires loose. The wiring harness and speakers come off the battery easily. Be sure to remove wires from clips.

Step 7 — Install New Battery



- Install the new battery into your device, re-install the speakers, and perform the first six steps in reverse.

To reassemble your device, follow these instructions in reverse order.