



# Nexus 7 2nd Generation Battery Replacement

Use this guide to replace the battery in your...

Written By: Heather



# INTRODUCTION

Use this guide to replace the battery in your Nexus 7.

## TOOLS:

[iFixit Opening Tool](#) (1)

[Phillips #0 Screwdriver](#) (1)

[Tweezers](#) (1)

## Step 1 — Back Cover



- Power down your device.
- Use your plastic opening tool to wedge between the seams around the sides of the device. Pry open each side, one at a time. For some a finger nail may be best. The case comes up quite high to the glass.

 Do not pry near the USB port at the base of the device as you may crack the rear panel.

## Step 2



- Work fingers around the seam between device and back cover. Use your plastic opening tool and fingers to separate each side until device and back cover are completely apart.

⚠ Be careful around the corners. The body of the device can be fragile.

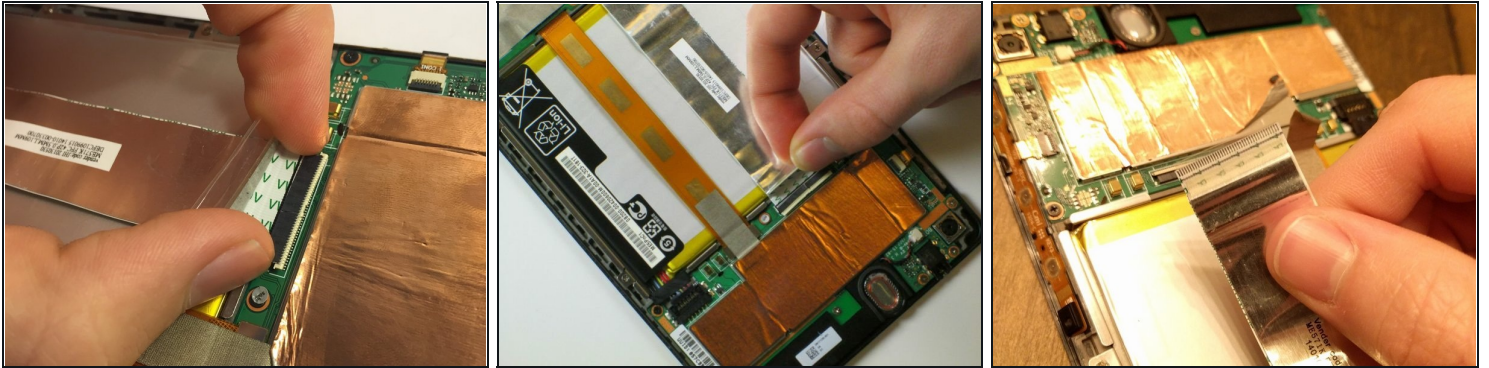
## Step 3 — Battery



- Insert the plastic opening tool under the side edge of the battery connector, and gently pry upward to disconnect it.

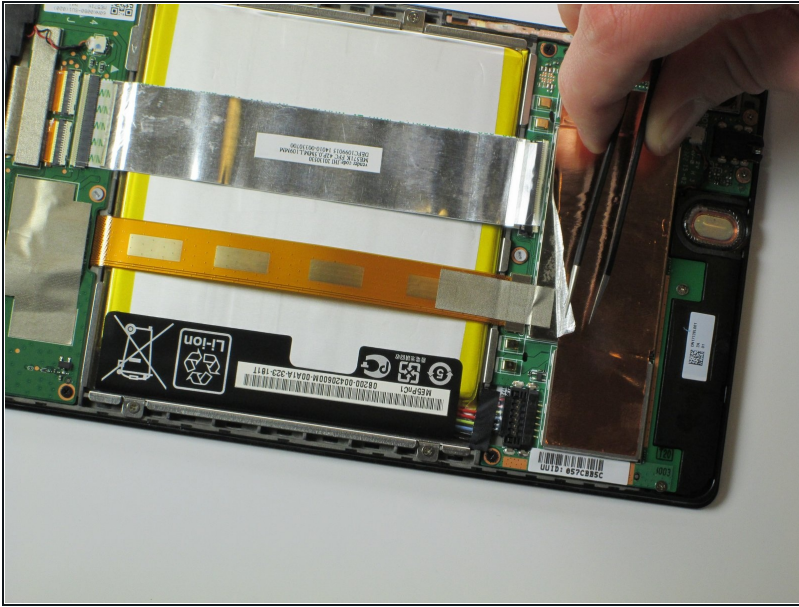


## Step 4



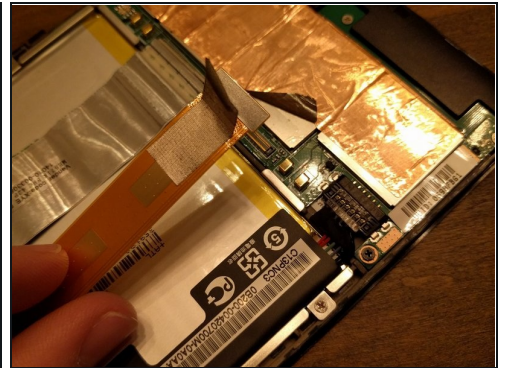
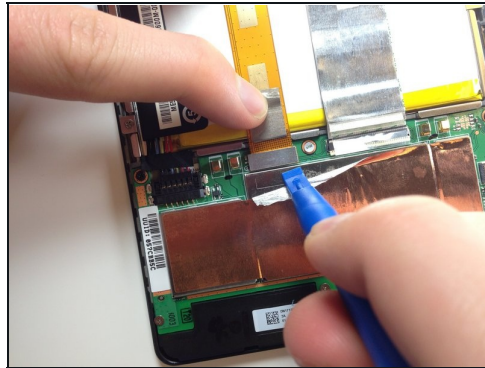
- Use the flat end of a spudger or your fingernail to flip up the clear protective flap on the ribbon cable ZIF socket.
- Using the flat end of a spudger or your fingernail, flip up the thin portion of the connector (**the white part**, opposite of the side where the cable inserts) to release the cable from its socket.
  - ⚠ DO NOT PRY the socket on the side where the cable inserts, or you may break the entire socket off the motherboard.
- Slide the cable out of the ZIF socket.
  - ① For more info on how to disconnect ZIF connectors, check out the [Recognizing & Disconnecting Cable Connectors guide](#).

## Step 5



- Peel protective foil cover back top of mother board to expose orange ribbon connection.
- ① The ribbon connections should now be fully visible, with the plastic tabs exposed.

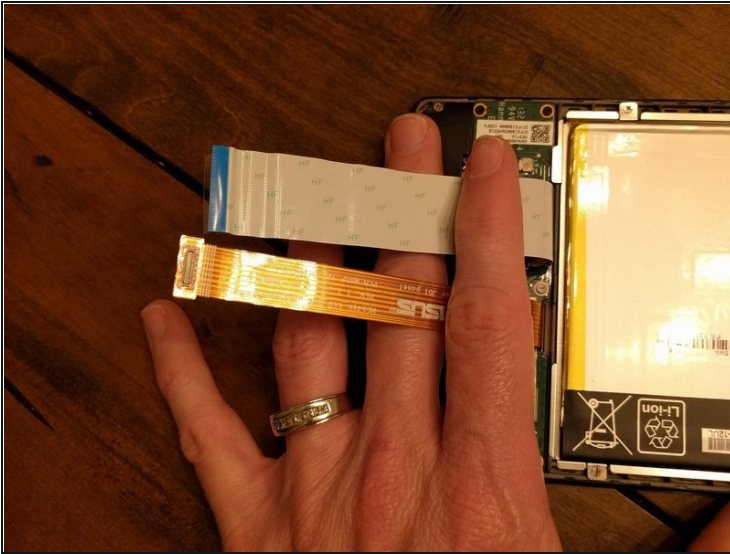
## Step 6



- Using the [tweezers](#), peel back the silver protective foil on top of the orange ribbon connector.
- Using the plastic opening tool, pry upward under the orange ribbon connector. It will pop right out of place.

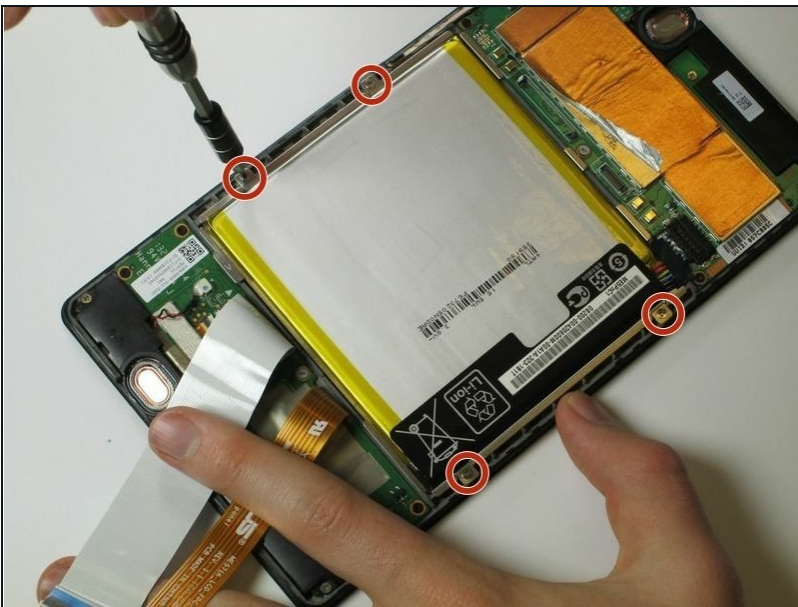


## Step 7



- Now that the two main ribbons are disconnected, fold and hold them back with your fingers, or place the tweezers or a light object on the ribbons to keep them in place.

## Step 8



- Use the #0 Phillips Screwdriver to remove the four silver 3 mm Philips #0 screws from around the battery housing.

## Step 9



- Remove the battery from your device by applying pressure at the base of the battery and lifting it out.

---

To reassemble your device, follow these instructions in reverse order.