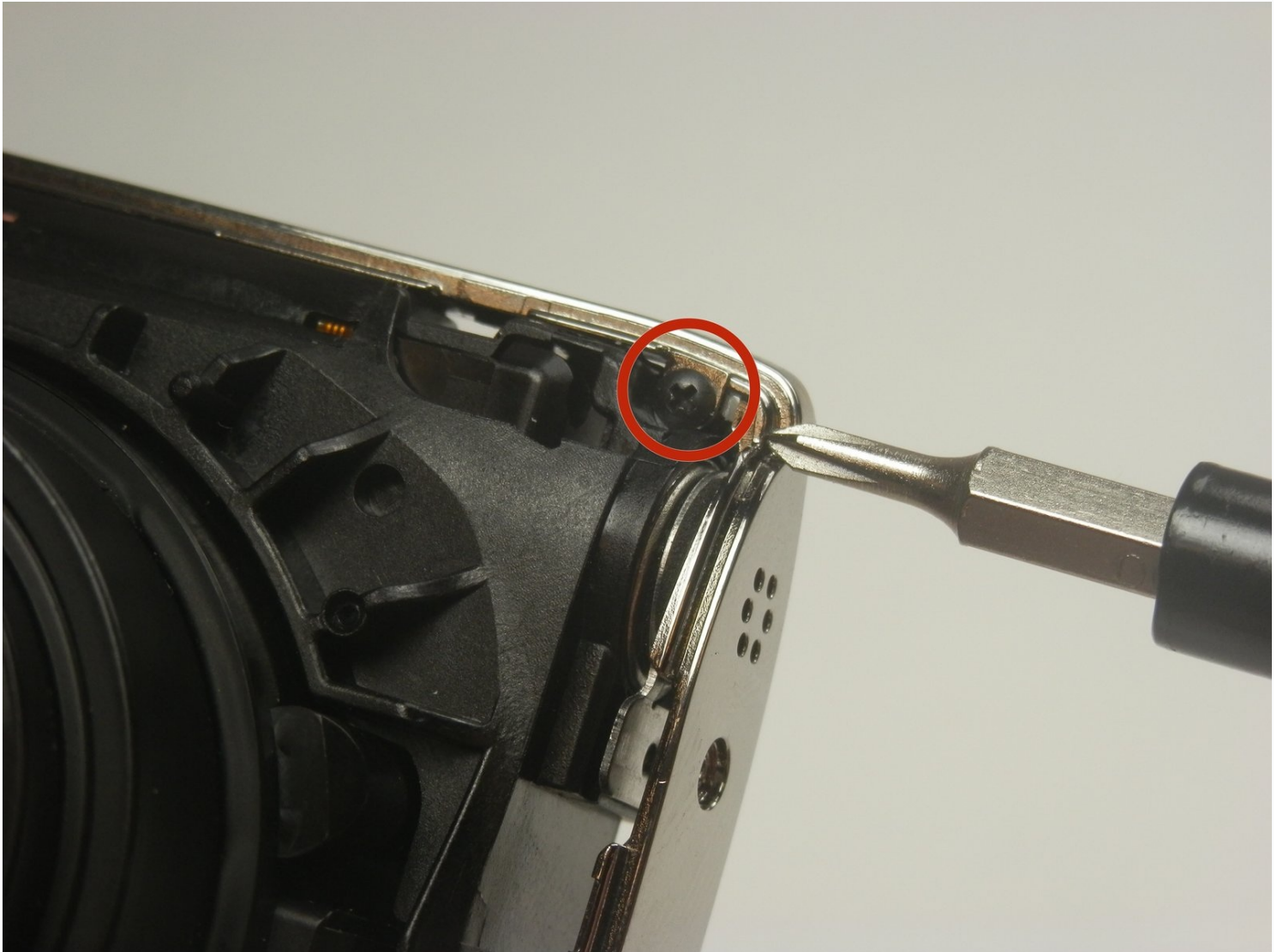




# Fujifilm FinePix T500 Lens Replacement

If your Fujifilm FinePix T500 is producing...

Written By: Brian Lasher



# INTRODUCTION

If your Fujifilm FinePix T500 is producing blurry images or is cracked or broken, use this guide to replace the camera lens. The camera lens transmits light to a fixed focal point. A faulty camera lens will transmit dark images, or no images at all. Fortunately, the camera lens can be replaced in just a few steps. It is important to approach the repair with proper techniques and tools to ensure a smooth replacement.

---

## TOOLS:

Phillips #00 Screwdriver (1)

Spudger (1)

Soldering Iron 60w Hakko 503F (1)

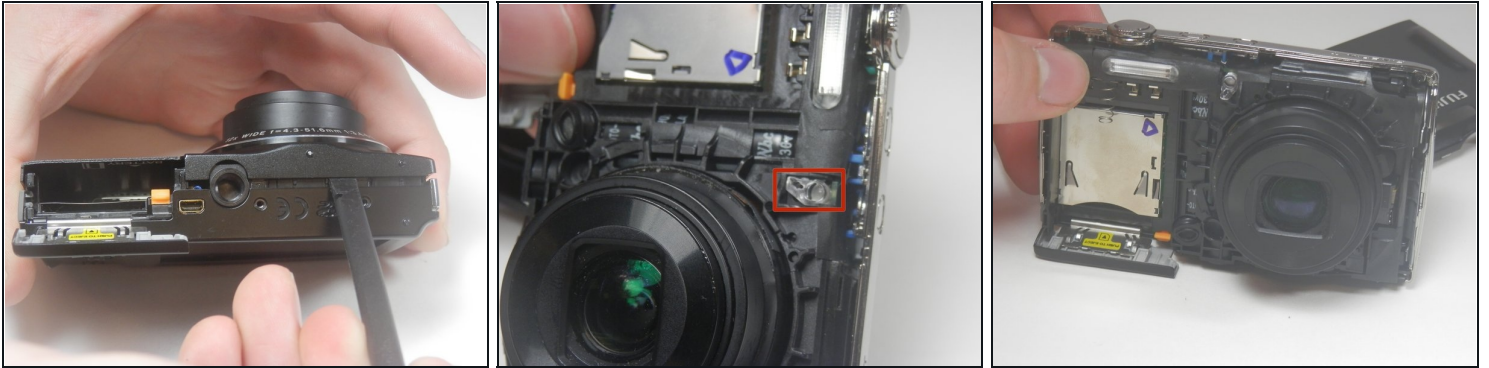
---

## Step 1 — LCD Screen



- Unscrew the six 3.5mm Philips head from the outer casing.

## Step 2



- Open the battery chamber and remove the battery.
- Pry the front half of the casing from the camera.
- Be careful that the sensor cover—the small piece of translucent plastic—doesn't fall out of place. Return it to its original location if it does.

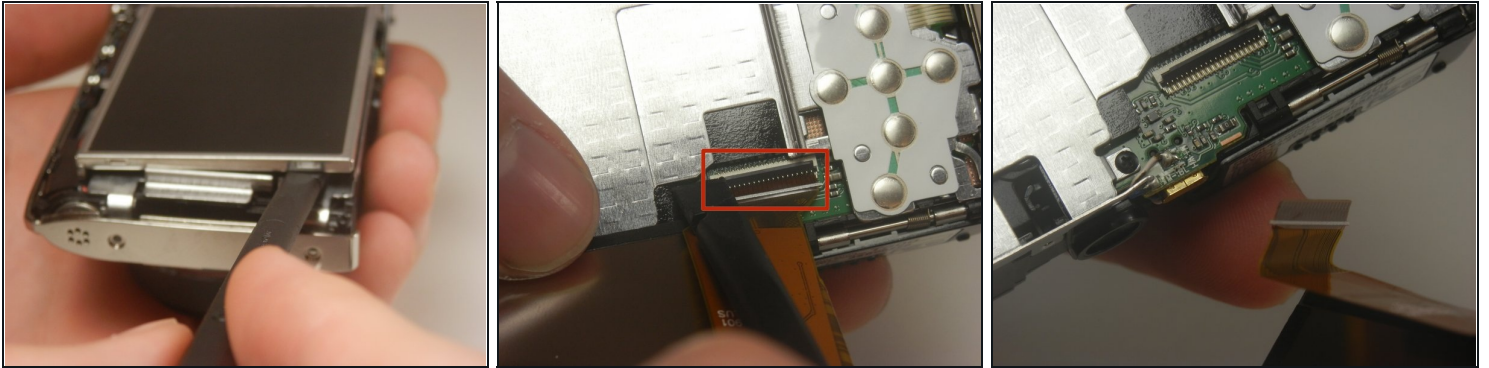
## Step 3



- Pry the back half of the casing from the camera.
- ⓘ Be careful when maneuvering the camera without the casing on as the LCD screen is not fastened to anything.

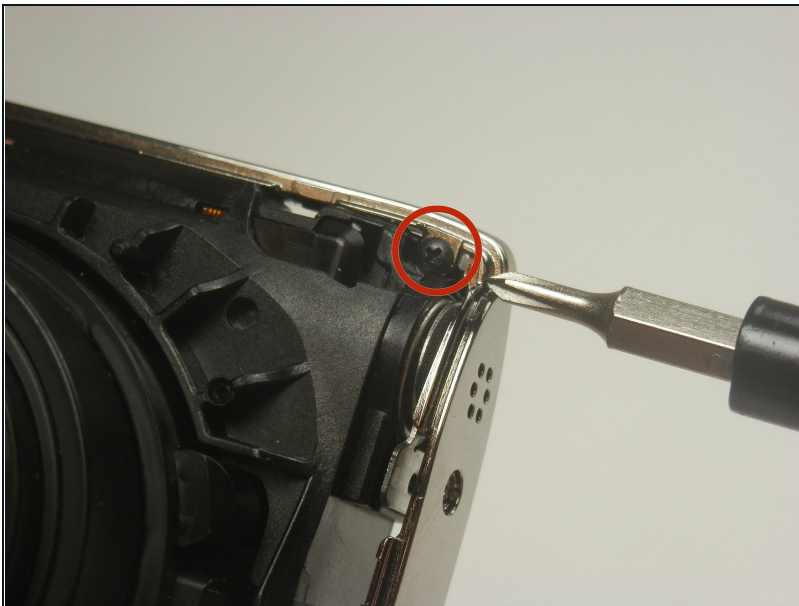


## Step 4



- Lift the LCD screen out of the camera.
- There is a tab that keeps in place the ribbon that attaches the screen and motherboard. Lift this up using the spudger and disconnect the screen from the motherboard.

## Step 5 — Lens



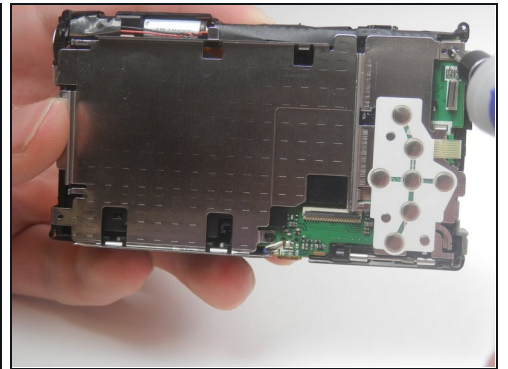
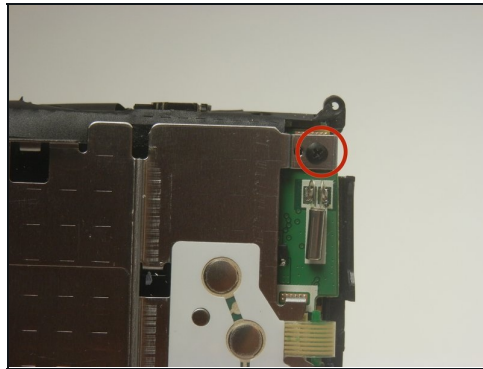
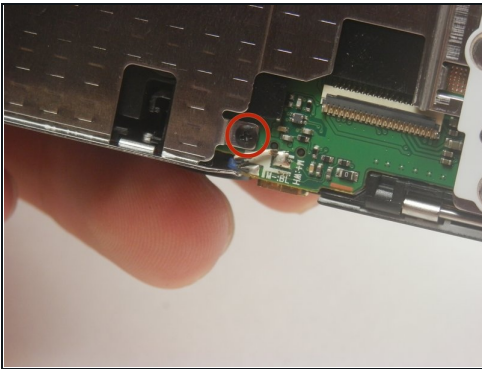
- Unscrew the 3.5 mm Phillips head screw from the corner of the camera.

## Step 6



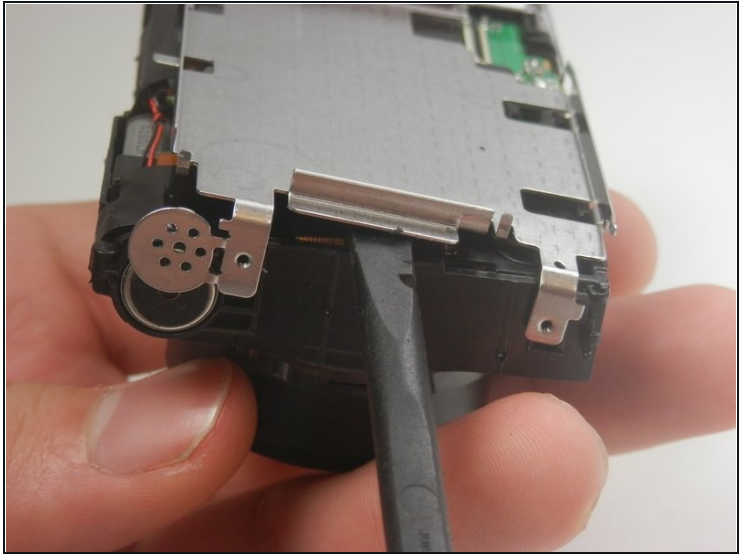
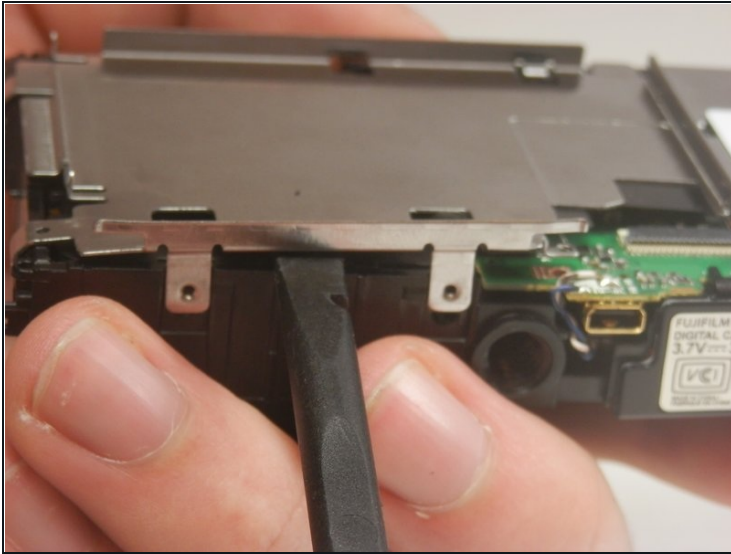
- Pry the center casing off the camera. This is best done by separating the top and side sections individually.

## Step 7



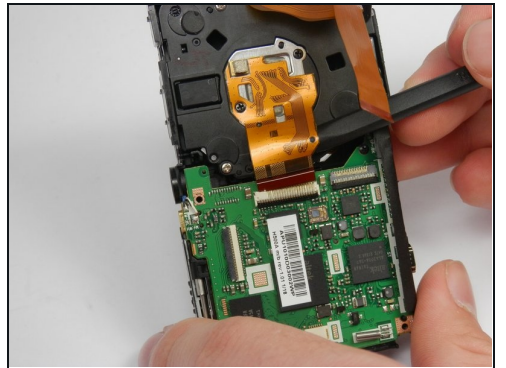
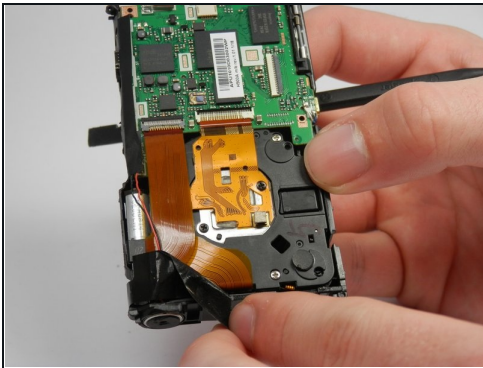
- Unscrew the two 3.5 mm Phillips head screws in the metal plate.

## Step 8



- Pry the metal plate out using the spudger.

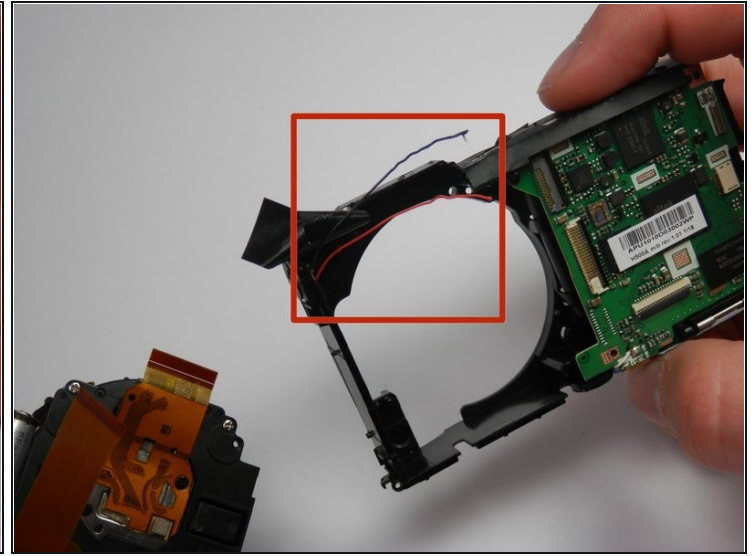
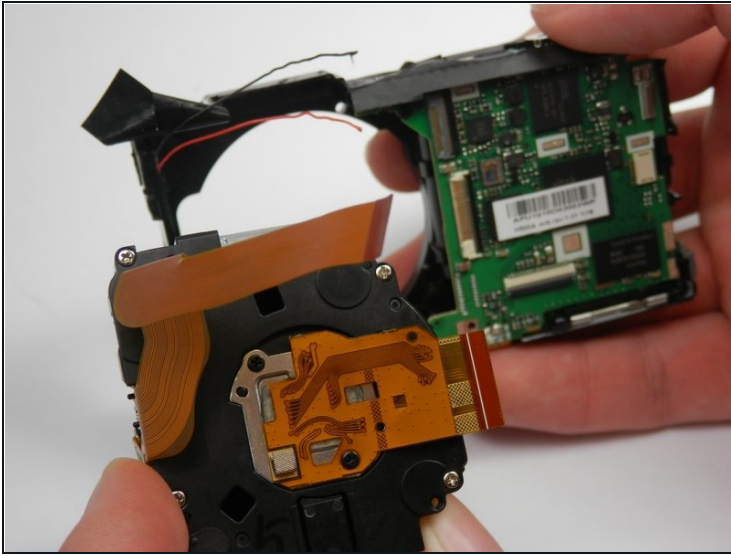
## Step 9



- Peel back the strip of black tape to reveal a red and black wire.
- Detach the orange ribbon by gently pulling on it.
- Detach the golden ribbon by gently lifting it with the spudger.



## Step 10



- The lens should now be free to simply be pushed out of its socket.
- The black and red wires that were exposed previously may be in the way of removing the lens and may break. If they do, you will need to solder these wires back into place upon reassembly.

---

To reassemble your device, follow these instructions in reverse order.