



Sony Cyber-shot DSC-W55 Front Case Replacement

This guide will show you how to replace the front casing of the Sony Cyber-shot DSC-W55.

Written By: Andrew Carter



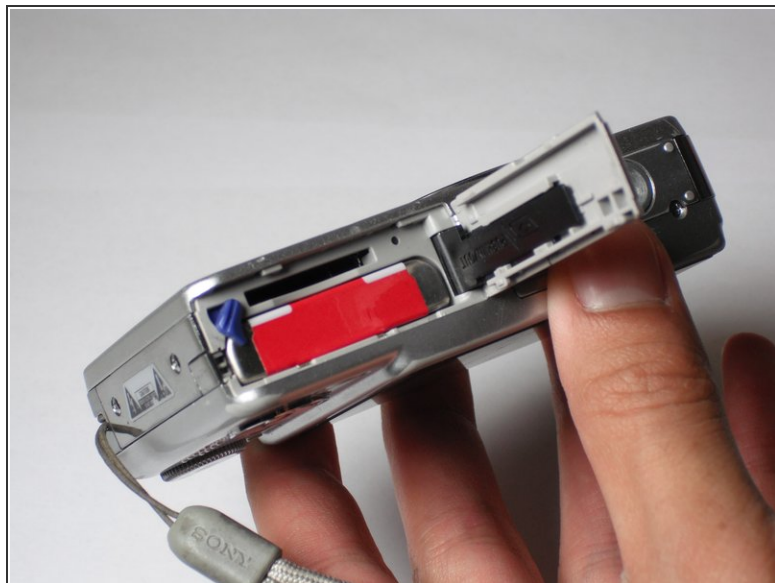
INTRODUCTION

We are going to explain the steps needed and what is necessary in order to replace a broken front cover for this camera.

TOOLS:

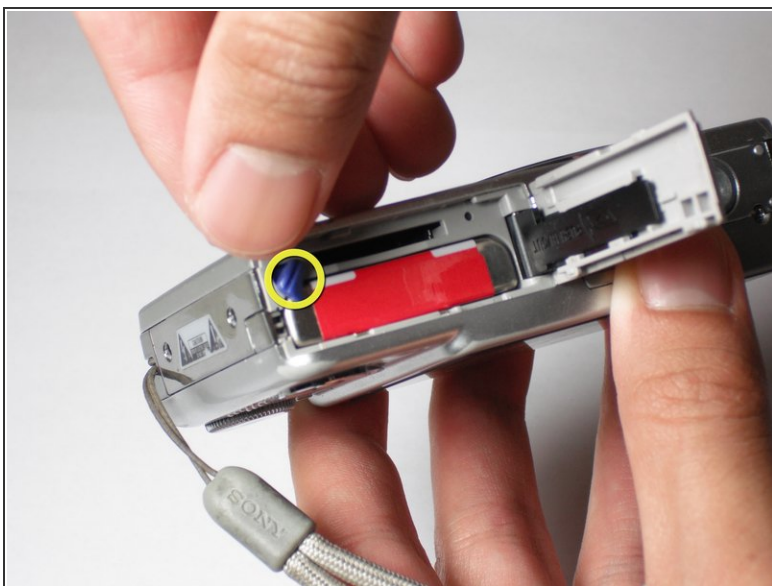
- [Phillips #00 Screwdriver](#) (1)
 - [iFixit Opening Tools](#) (1)
-

Step 1 — Battery



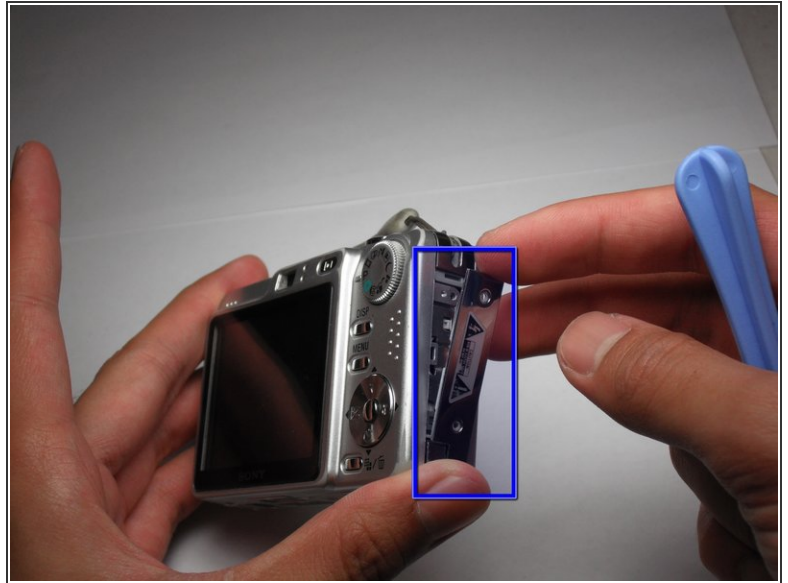
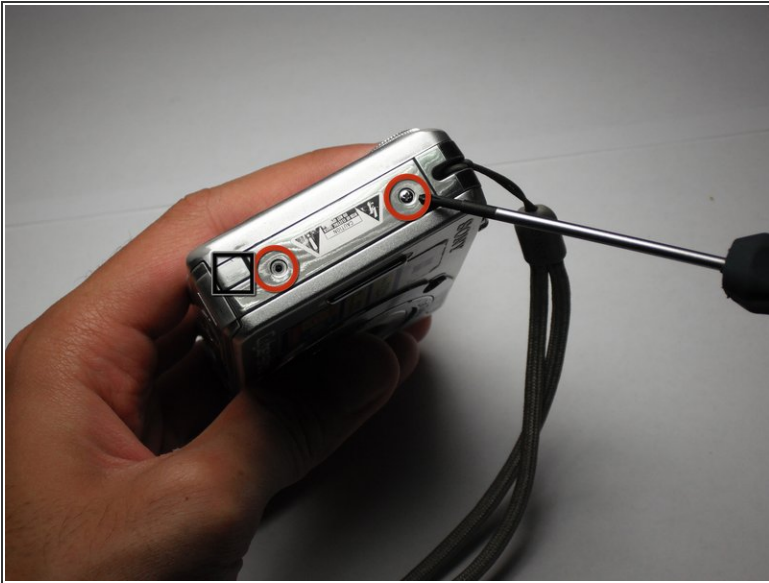
- Slide the battery cover in the direction the arrow points.
- Pull the battery cover towards you.

Step 2



- Flick the blue switch for the battery to pop out.
- Remove the battery from the camera.

Step 3 — Back Case

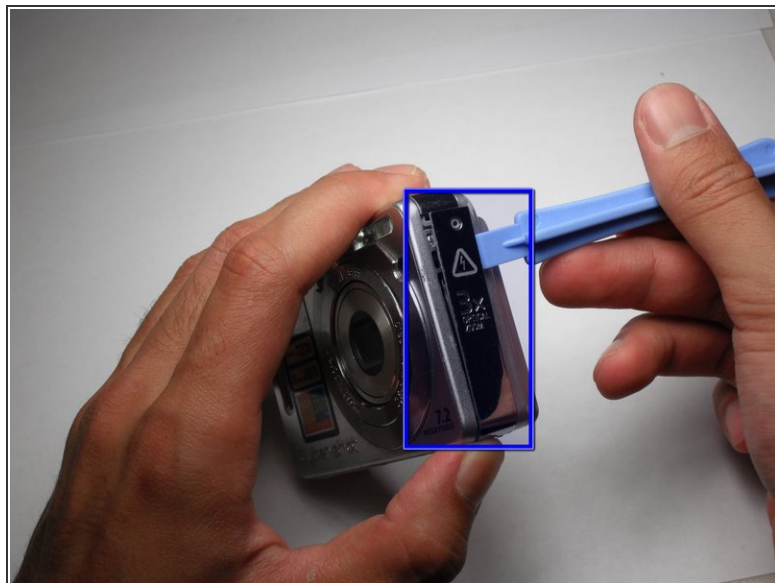
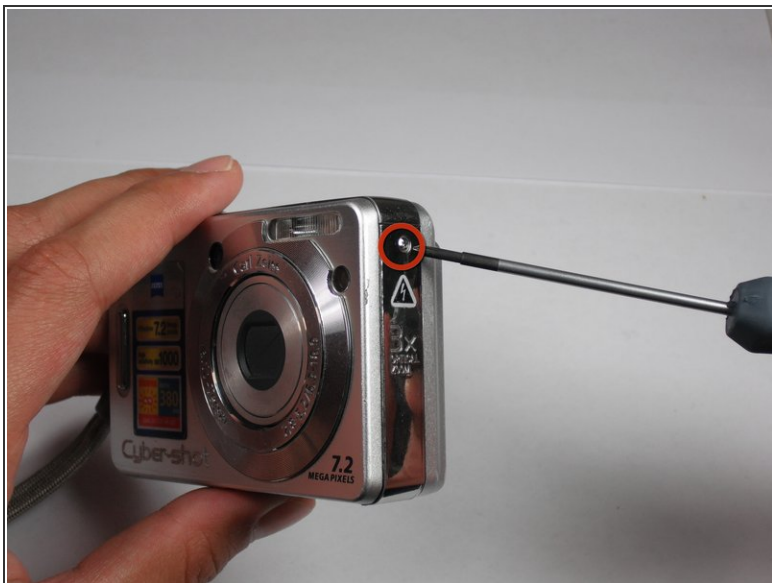


- Using the Phillips #00 Screwdriver, remove the two screws from the caution panel.

- Remove that panel.

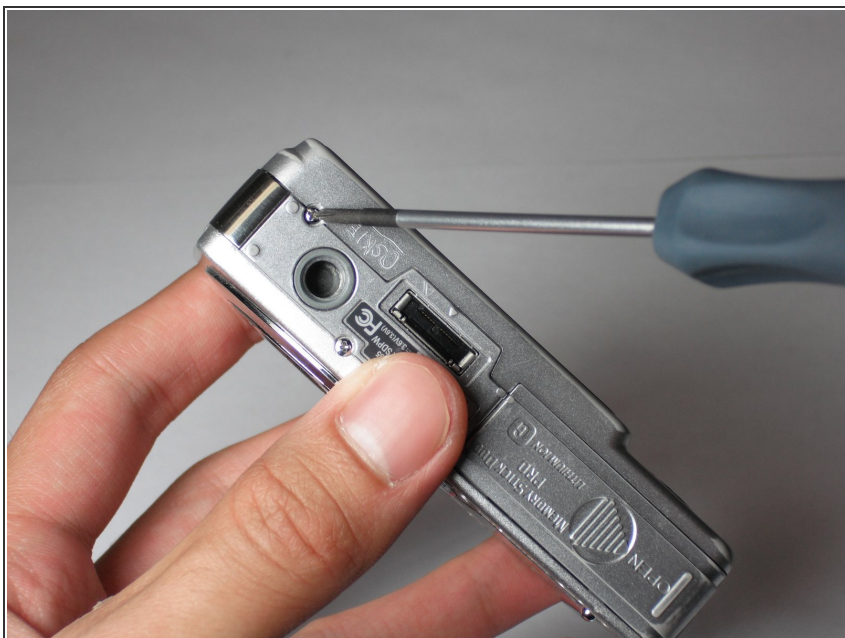
⚠ Careful for falling pieces.

Step 4



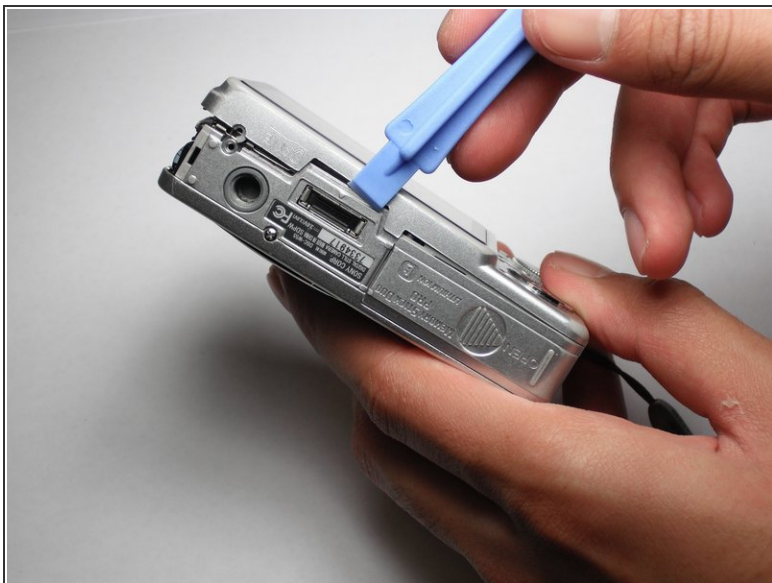
- Remove the screw with a Phillips #00 screwdriver from the right side of the camera (with '3x optical zoom' engraved on the side panel).
- Remove that panel.

Step 5



- Remove the screw using the Phillips #00 screwdriver from the bottom of the camera, closest to the back cover.

Step 6



- Gently remove the back cover.

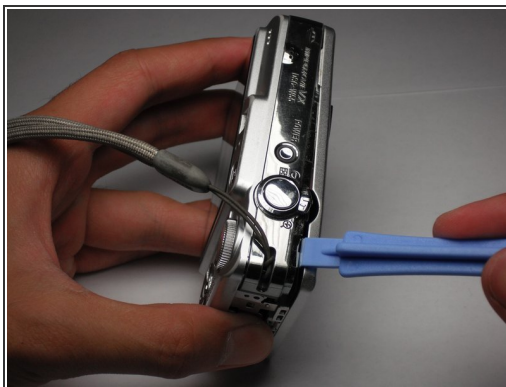
⚠ It may be a bit stiff, so use some force to remove it. Proceed with caution.

Step 7 — Front Case



- Remove the screw using a Phillips #00 screwdriver on the left side (where the "3x optical zoom" panel use to be).

Step 8



- Remove the small screw using a Phillips #00 screwdriver on the bottom of the camera attached to the front cover.
- Gently remove the front cover.
- ⚠ Put a little force to pop off the case. Proceed with caution.

To reassemble your device, follow these instructions in reverse order.