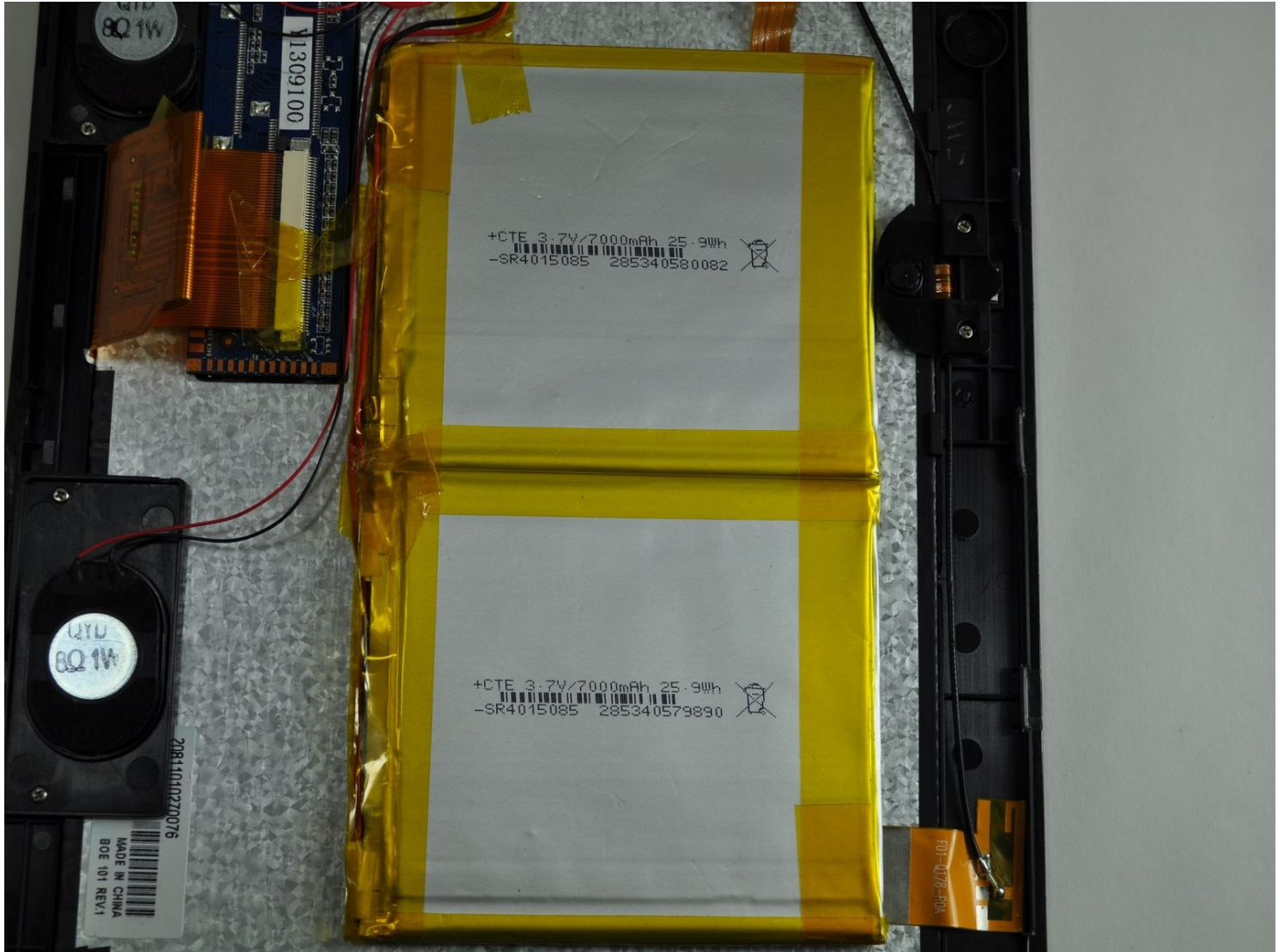




# Polaroid A10 Battery Replacement

Before you begin taking the device apart, make...

Written By: armando



# INTRODUCTION

Before you begin taking the device apart, make sure that you have conducted a thorough diagnosis to ensure that you will in fact need to replace the battery. Once you have determined that the battery no longer holds a charge, then you may proceed with this guide. It's also important that you have the appropriate tools and preferably a flat surface to work on, with good lighting.

---

## TOOLS:

Plastic Cards (1)

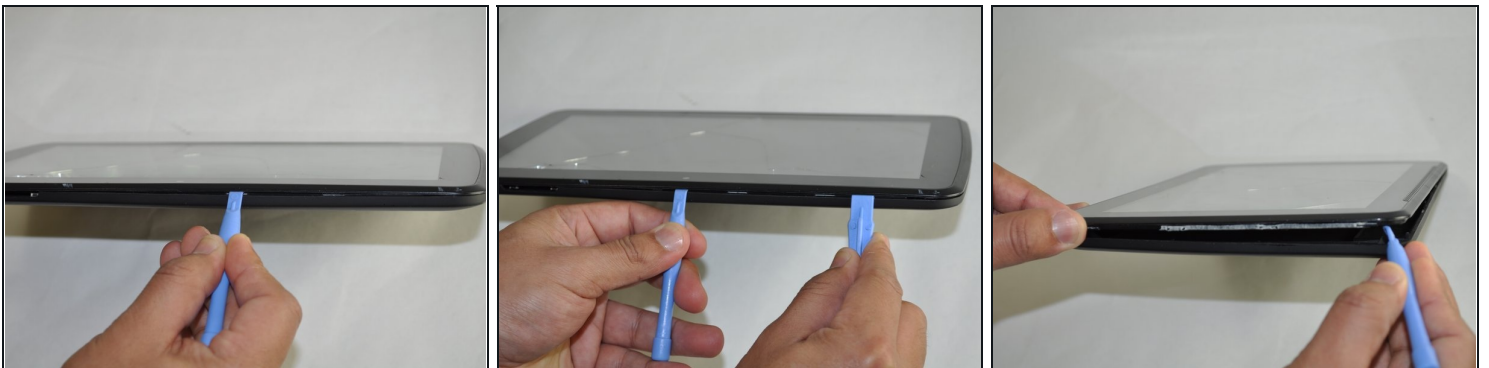
iFixit Opening Tool (1)

Soldering Iron 60w Hakko 503F (1)

Heavy-Duty Spudger (1)

---

## Step 1 — Back Cover

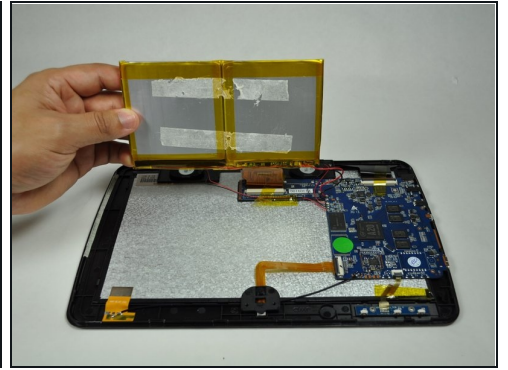
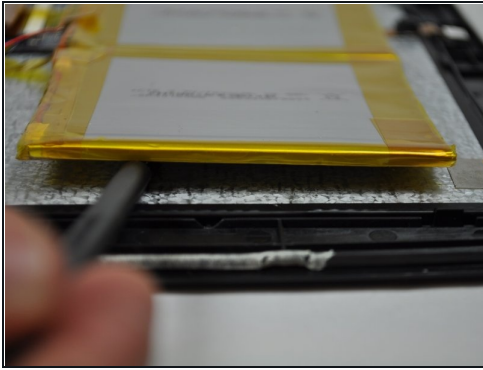


- Begin by having the side with volume and power button face up towards you.
- Insert a plastic opening tool between the display and the back cover.
- Once you have one plastic opening tool in, you can insert another one. While holding one in place, slide the other along the gap to release the tabs.

 It is easier to remove the back cover, if the display screen is faced down.

 The tabs must be released from all four sides before removing the back cover.

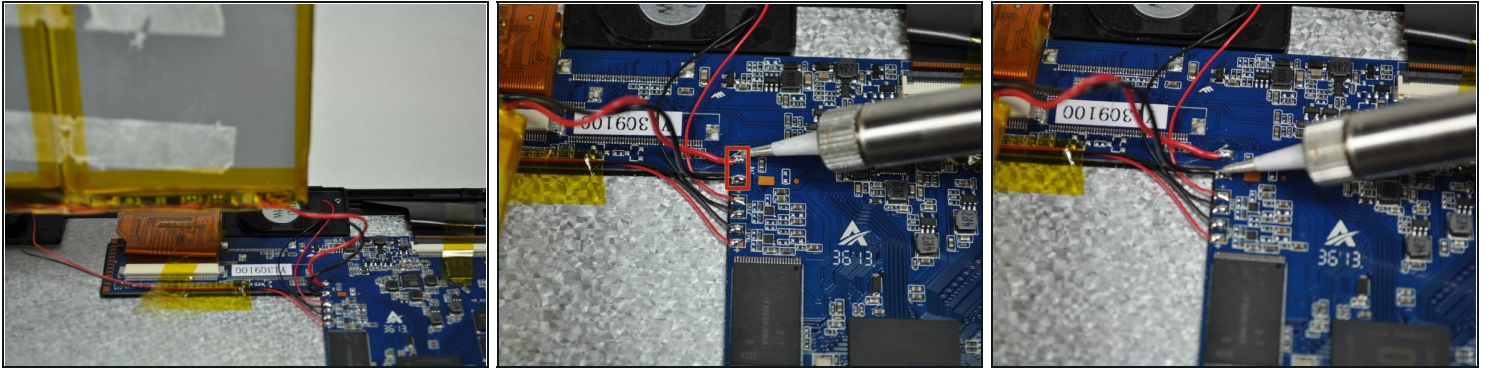
## Step 2 — Battery



- Begin by inserting the flat end of a spudger underneath the battery to separate the glue from the battery.
- ① It is better to use a [plastic card](#) if you have one.
- Gently lift up the battery as you continue to separate the glue from the battery.
- ① Lift up just enough to see where the glue is, so that you don't bend the battery.
- Once the glue has been separated, gently lift up the battery and you will notice two wires attached to the motherboard.

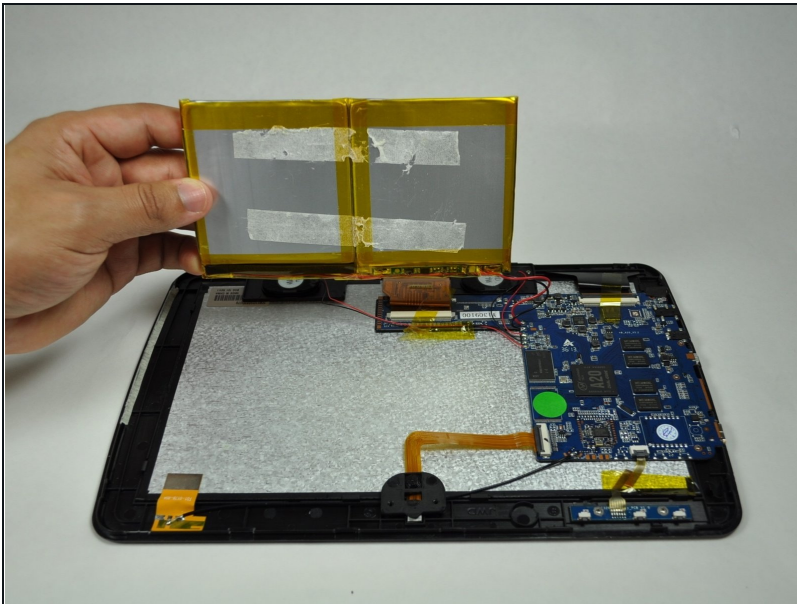


### Step 3



- Follow the (Black and Red) wires from the battery to the motherboard.
- The two wires (Black and Red) must be removed from the motherboard, as they are connected to the battery.
- ① Removal and installation of wires requires soldering. [Here's a helpful link to assist you with great soldering techniques.](#)

### Step 4



- Gently lift the battery up and out of the device.

To reassemble your device, follow these instructions in reverse order.