



ASUS MeMo Pad FHD10 Motherboard Replacement

The motherboard has lots of other parts mounted...

Written By: Al Muatasim



INTRODUCTION

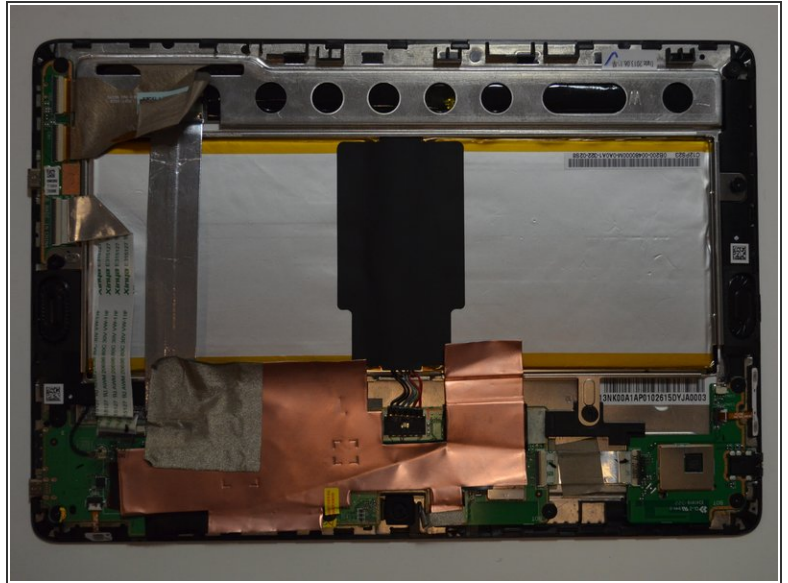
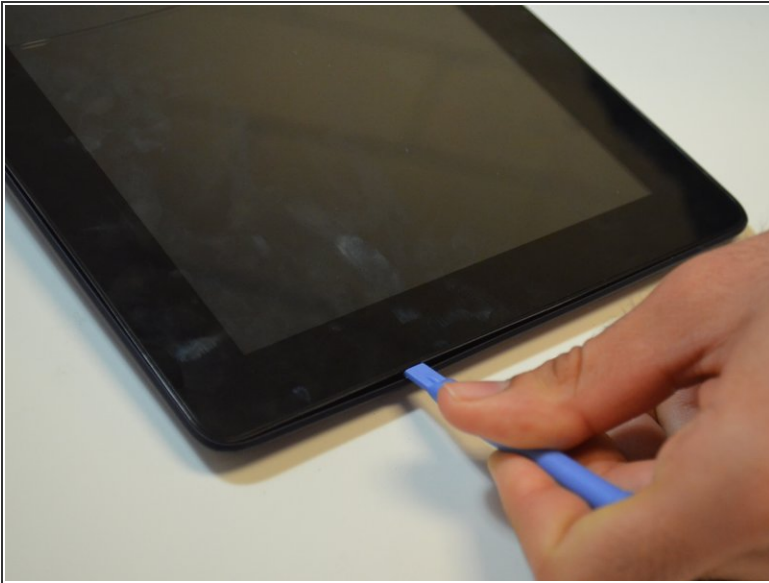
The motherboard has lots of other parts mounted into it, therefore it is important to treat the board carefully, and follow instructions as shown on the steps.



TOOLS:

- [Phillips #00 Screwdriver](#) (1)
 - [iFixit Opening Tool](#) (1)
 - [Tweezers](#) (1)
-

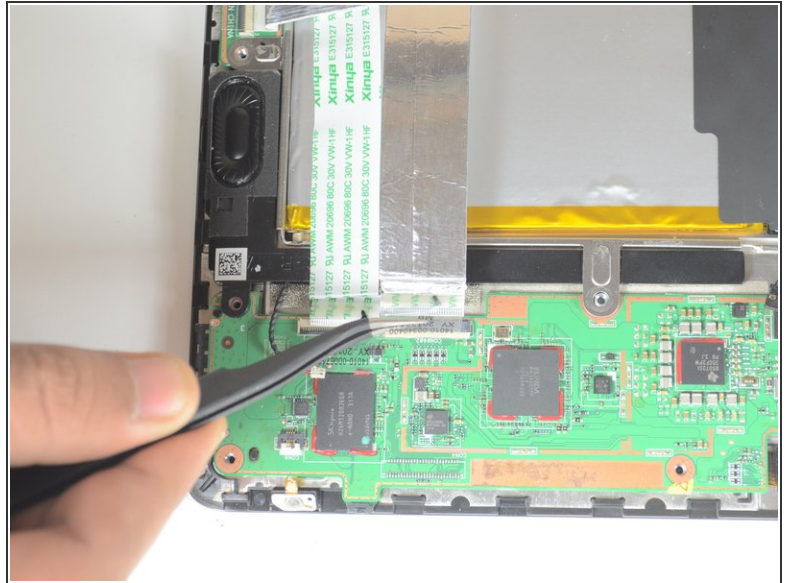
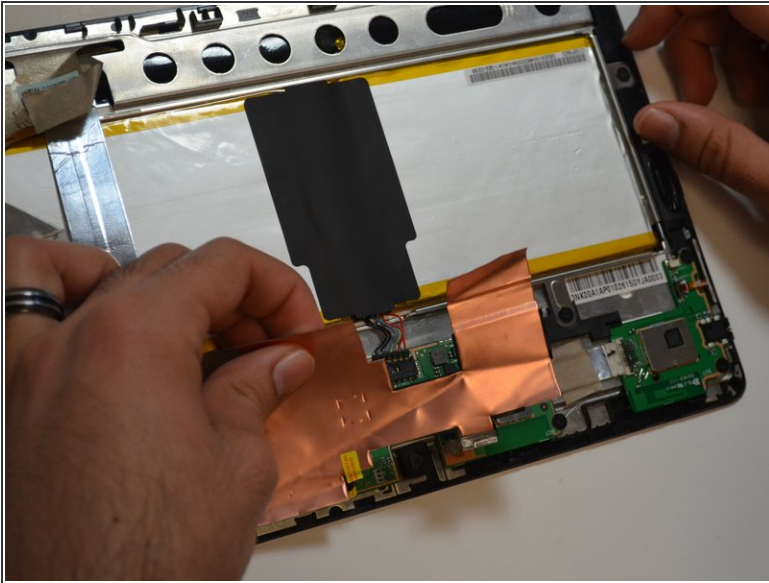
Step 1 — Battery



⚠ Make sure that the device is turned off as a precaution.

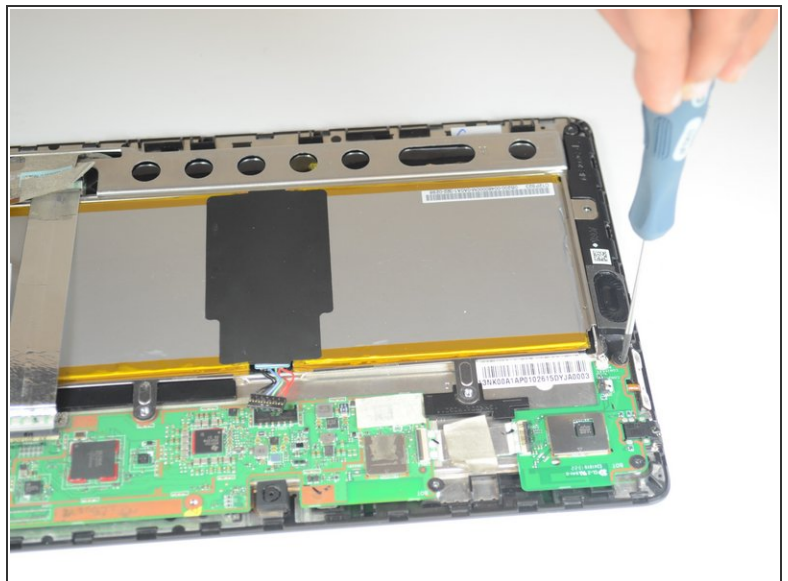
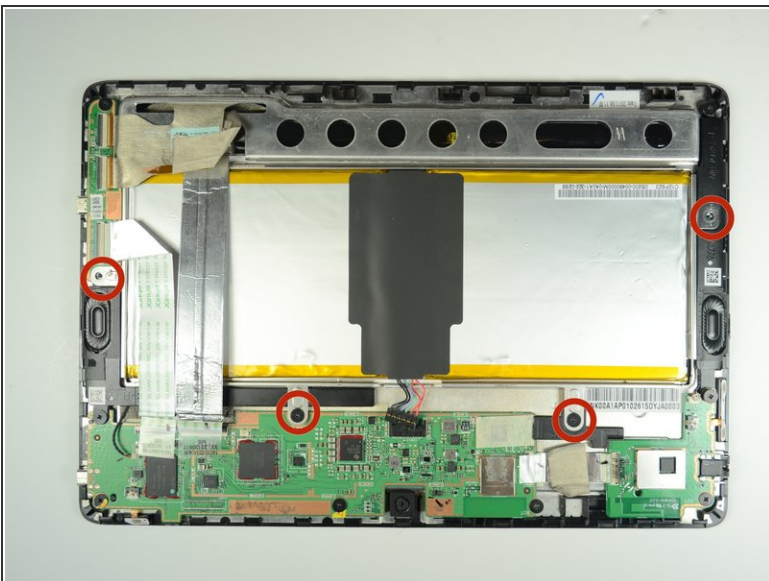
- Unplug the charger and remove any memory card you may have in the device.
- Wedge the plastic opening tool between the front and back cover on every side.
- Slide the plastic opening tool back and forth to make sure that the back cover is disconnected.
- Once disconnected, remove the back cover from the device screen.

Step 2



- Remove the protective copper sticker and all tape fixed on the device.
 - Using tweezers, remove the ribbon cable from their connections attached to the motherboard.
- ⚠ While using the tweezers, make sure to use minimum force and precision to avoid damaging any components.

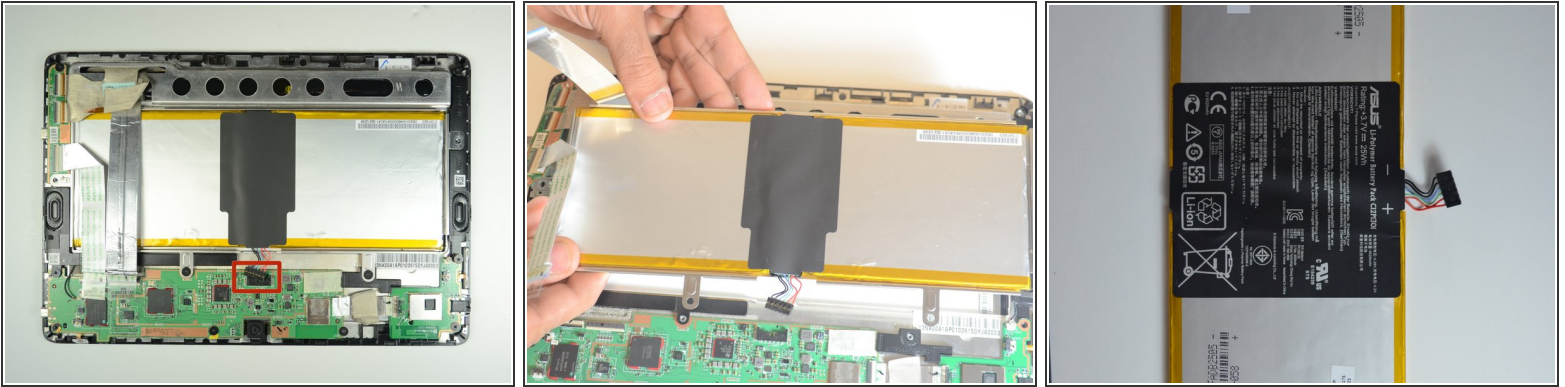
Step 3



- Remove the four 2 mm Phillips #00 screws holding the battery tray in place.

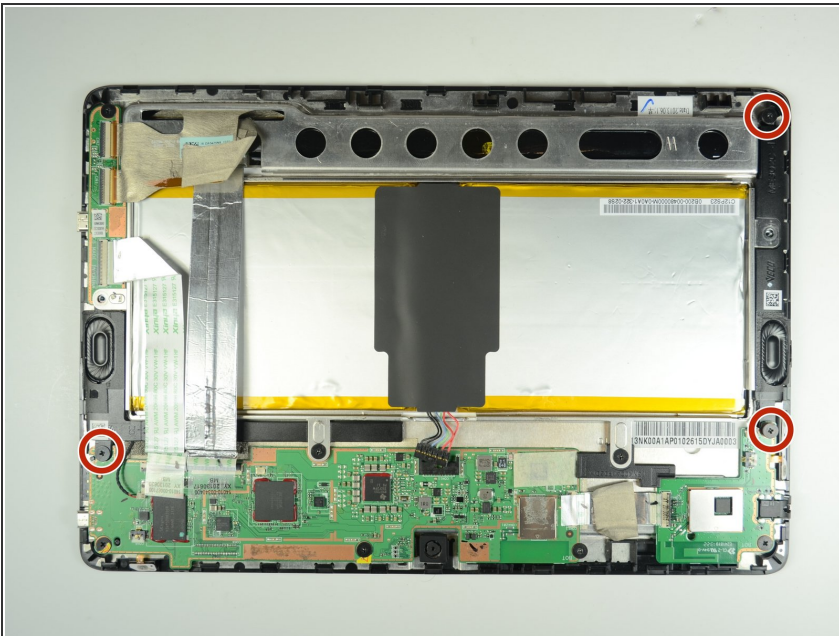
This document was generated on 2023-01-23 09:44:14 AM (MST).

Step 4



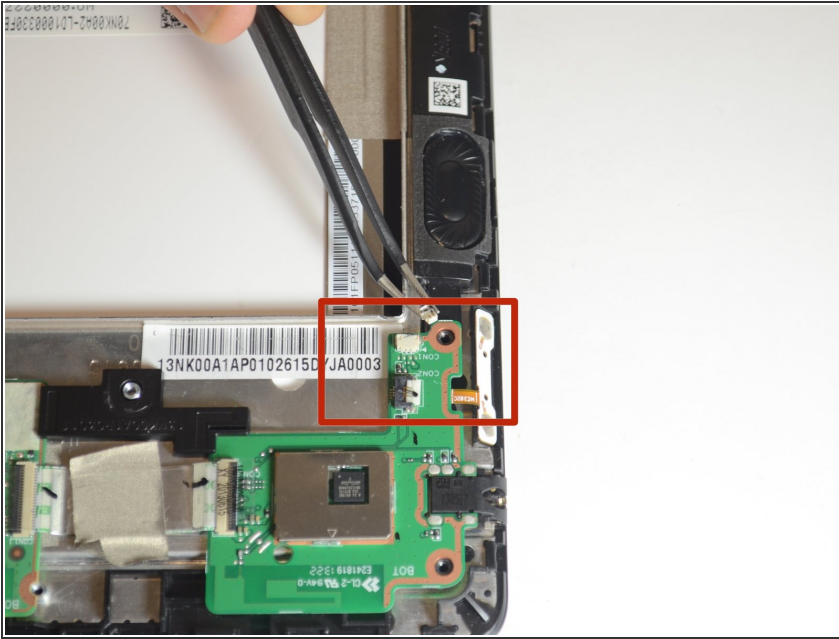
- Locate the battery cable attached to the motherboard. Using the same technique used on the ribbons, do the same with the battery.
- Remove the battery from the device. Once removed, use the plastic tool to separate the metal frame from the battery.
- i When separating the metal frame, be sure to hold on in the center as the battery is two separate cells.

Step 5 — Speakers



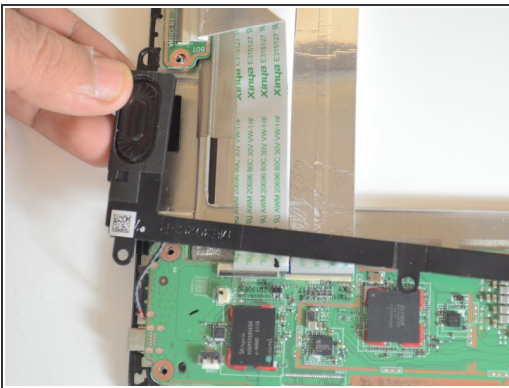
- Remove three screws using a Phillips #00 screwdriver.

Step 6



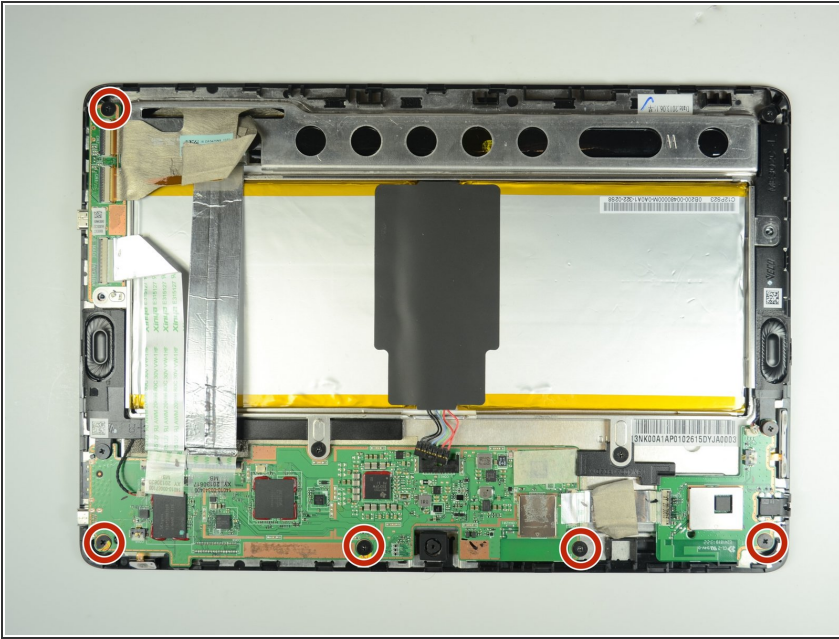
- i The two speakers are located on opposite sides of the device. Both are long black pieces with connections to the motherboard.
- Unplug the speaker cables from their connections on the motherboard gently by using tweezers.

Step 7



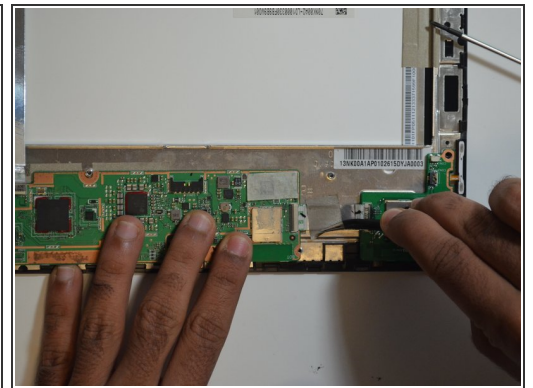
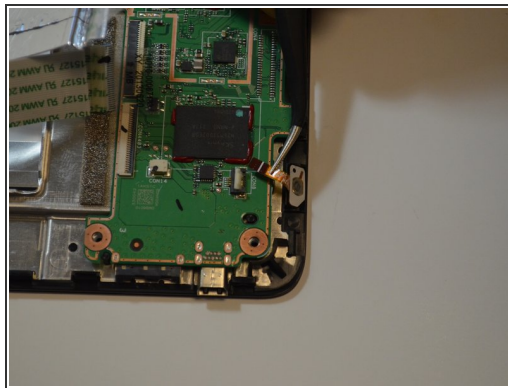
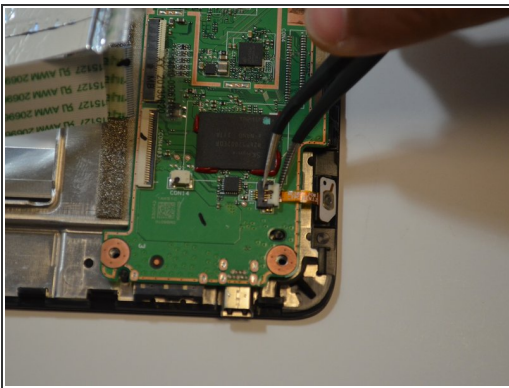
- Gently use your hands to remove the speakers.

Step 8 — Motherboard



- Remove the five screws using a Phillips #00 screwdriver.

Step 9



- Carefully disconnect the cord that connects the on/off button to the motherboard
- Peel back the electrical tape holding the connections of the motherboard down to the frame of the device.

Step 10



- Use your hands to remove the motherboard from the device.

To reassemble your device, follow these instructions in reverse order.