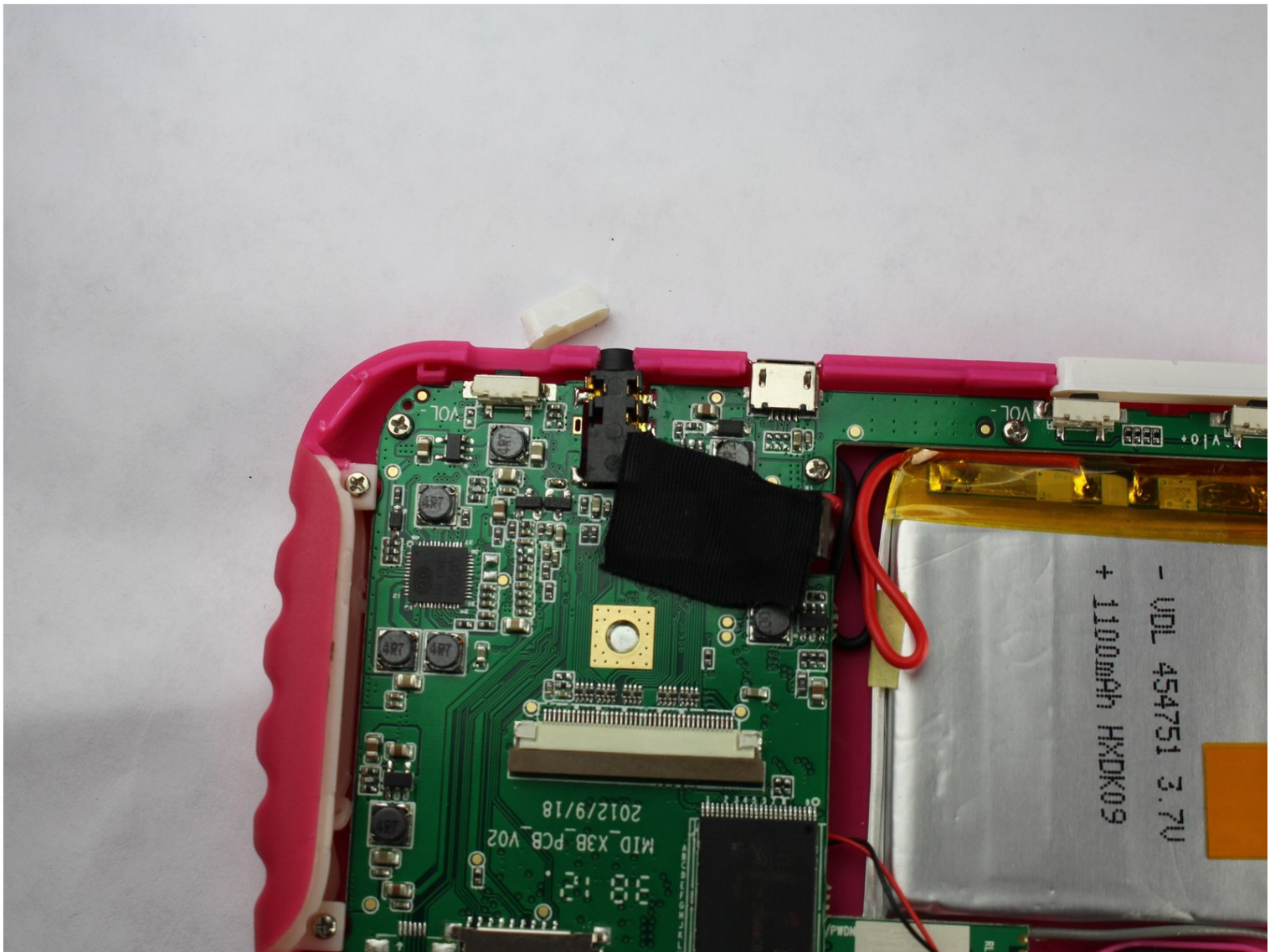




Ematic Model FTABMP2 Power Button Replacement

If your Ematic model #FTABMP2 won't turn on or...

Written By: Timothy



INTRODUCTION

If your Ematic model #FTABMP2 won't turn on or the power button is stuck or damaged, use this three-step guide to replace the power button.

The Ematic model #FTABMP2 is a small tablet device designed for children with its bulky plastic case. Turning it on is as simple as pressing the small plastic power button on its side. When the power button becomes stuck or damaged, the device cannot turn on.

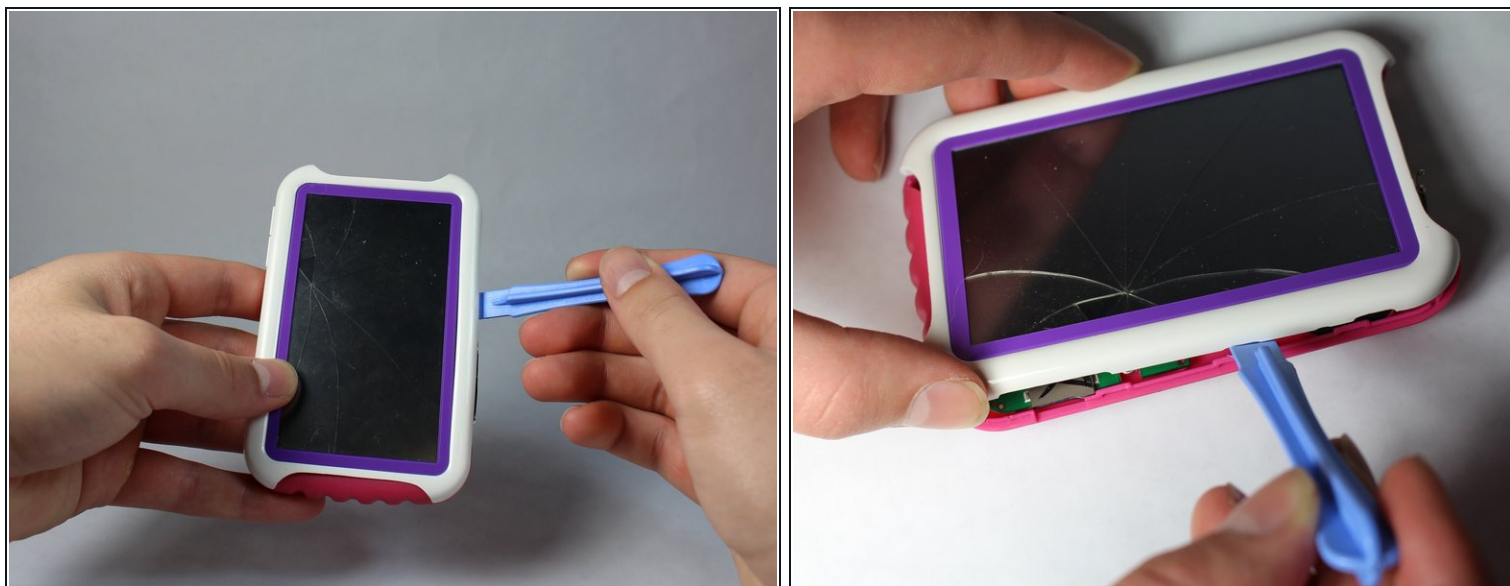
This fix requires the iFixit Opening Tool for opening the plastic case and a replacement power button.

NOTE: Be careful when opening the device and exposing the motherboard. Consider purchasing iFixit's [ESD safety gloves](#) to decrease the risk of contamination to any sensitive parts in the motherboard.

TOOLS:

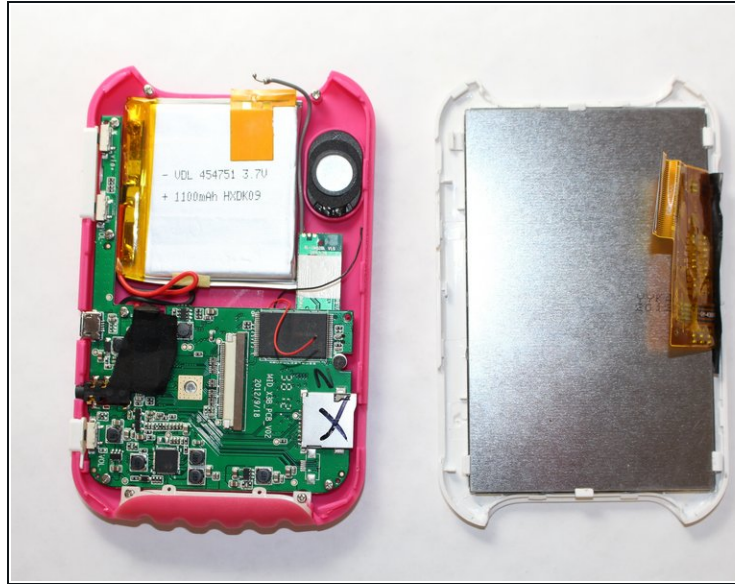
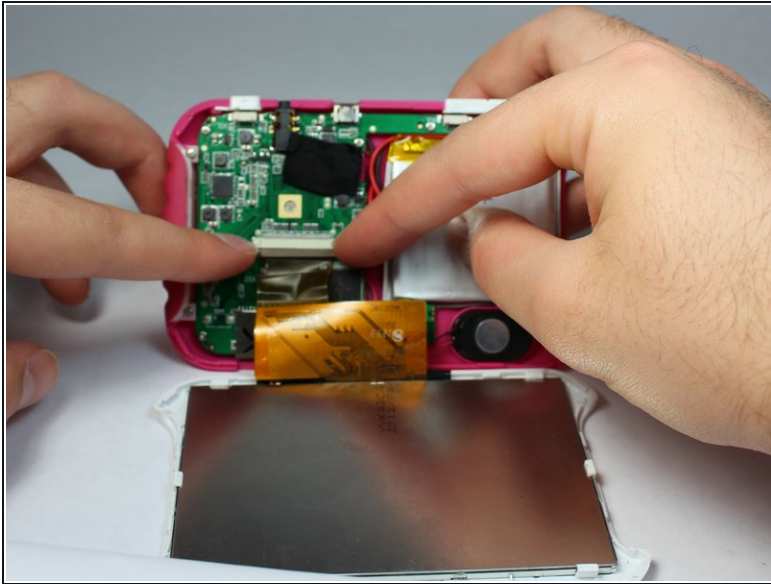
iFixit Opening Tool (1)

Step 1 — Power Button




- Use the opening tool to pry open the device case.

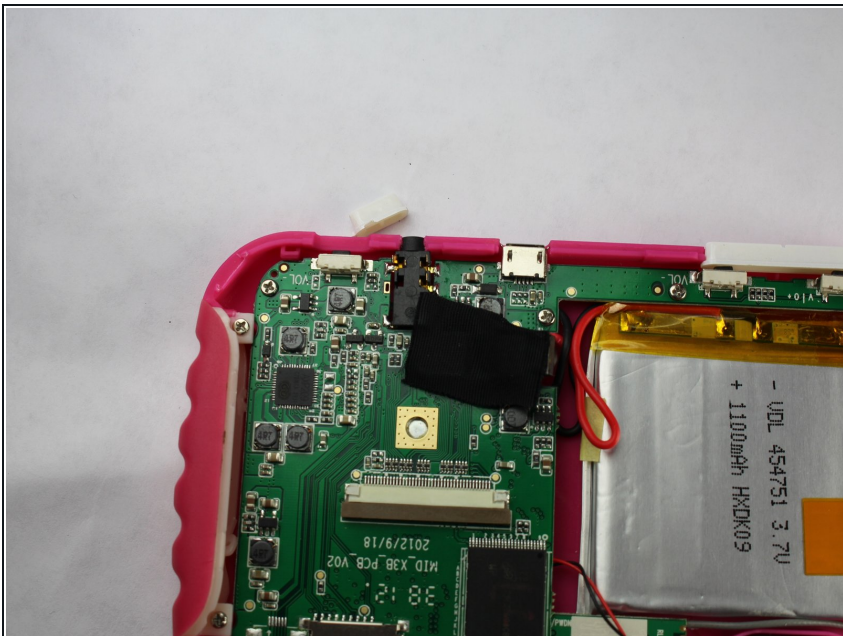
Step 2




- Disconnect the LCD cable from the motherboard by pressing together the two sides of the clamp.

 This will separate the device into two pieces.

Step 3



- The old power button will fall out by itself.

 Replace it with the replacement button and secure it by clicking it into place.

To reassemble your device, follow these instructions in reverse order.