



Homelite UT44172 Blades Replacement

How to replace the shear blades of the Homelite UT44172 Cordless Grass Shear.

Written By: Adam soto



INTRODUCTION

If you are having trouble with your Homelite UT44172 Cordless Grass Shear cutting grass due to dull, loose, or broken blades, follow this guide to replace them.

TOOLS:

- [Phillips #2 Screwdriver](#) (1)
-

Step 1 — Removing Screws



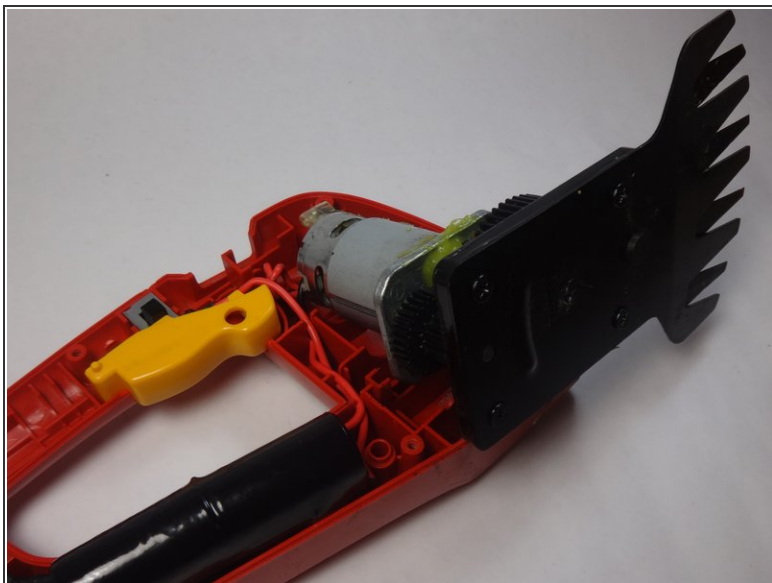
- Remove the six 15.0 mm screws from the body of the device with a Phillips #2 screwdriver.

Step 2 — Removing Faceplate



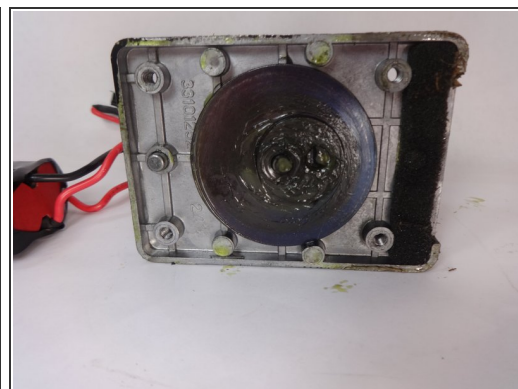
- Remove the face plate by lifting it away from the other half of the device. This will expose the interior.

Step 3 — Exposing Blade Components



- Use the Phillips #2 screwdriver to remove the four 10.0 mm screws on the bottom of the blades.

Step 4 — Replacing Blades



- Remove the old blades by pulling them away from the gears and motor.

⚠ Be careful handling the blades. They are sharp.

To reassemble your device, follow these instructions in reverse order.