



# iRobot Roomba 650 Battery Replacement

Need to replace your Roomba's battery? Let's do it!

Written By: Charles Ward



## INTRODUCTION

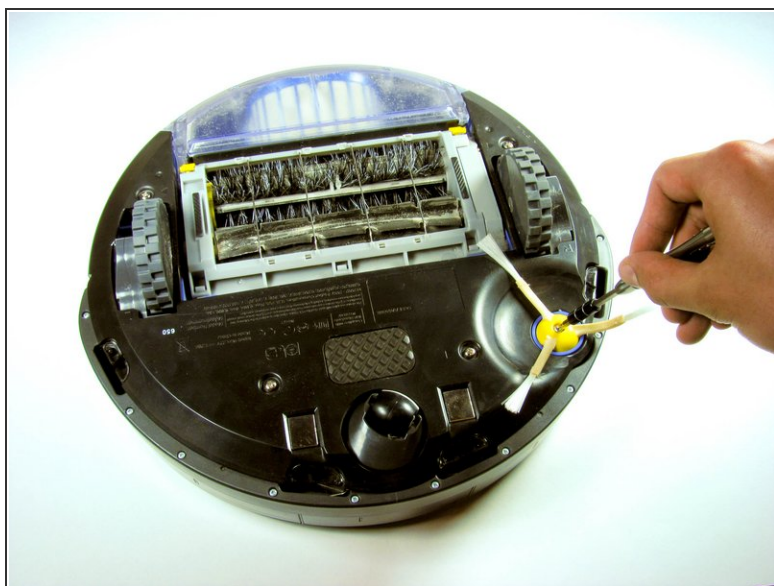
The battery is an essential component of the vacuum cleaning robot. If the battery is dead, you may purchase replacement batteries from the manufacture to replace it. Here's a simple guide to replace battery of the Rooba 650. The battery is accessible after removing a couple parts from the bottom of the device.



### TOOLS:

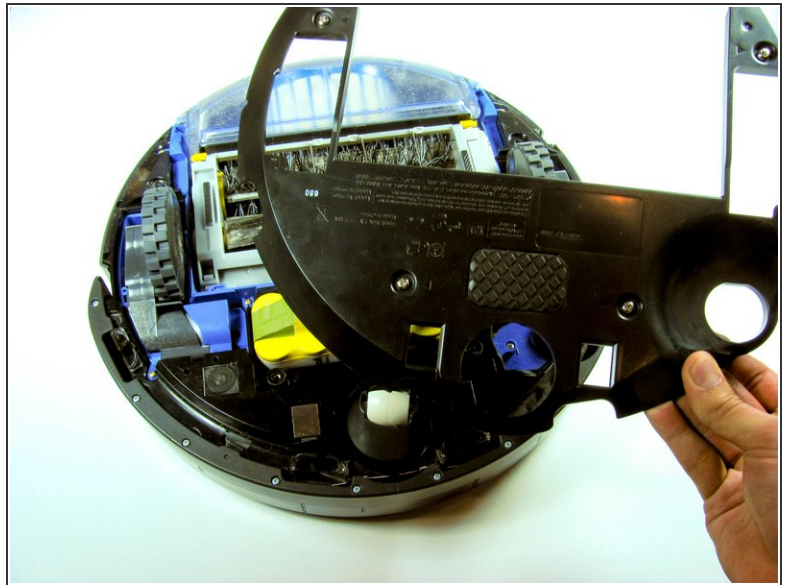
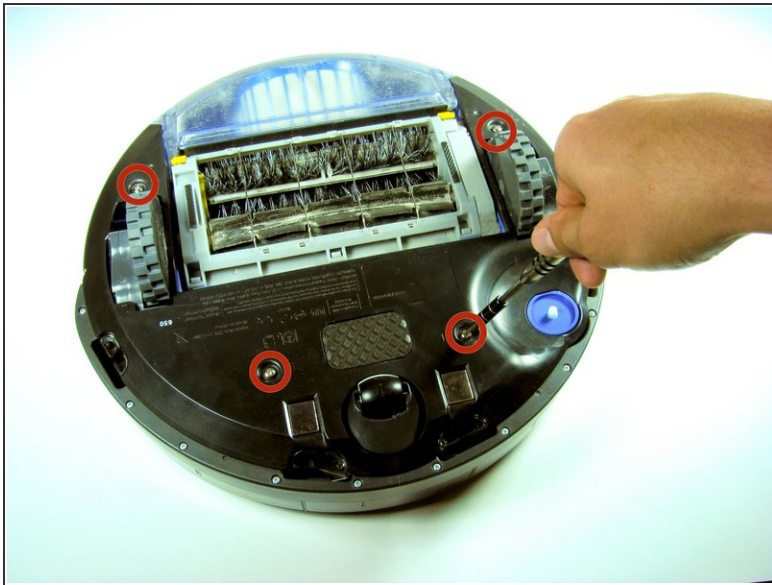
- [Phillips #0 Screwdriver](#) (1)
-

## Step 1 — Removing the Side Brush



- With the Roomba upside down and turned off, use the Phillip's 02 screwdriver to remove the one 3.5 mm screw from the center of the side-brush.
- Set the screw aside and pull the brush out.

## Step 2 — Bottom Panel Removal



- Unscrew the four screws that hold the bottom panel using the Phillips 02 screwdriver.
- ⓘ The screws will not come out of the bottom panel. They were designed to become loose but not be removed. This prevents you from losing them, and prevents the Roomba from sucking them up if they came out during cleaning.
- Once you are sure that all the screws have been loosened as much as possible, then lift the bottom panel up off the Roomba.

## Step 3 — Battery



- Once the side brush and bottom panel are out of the way, simply grasp the battery by the two green flaps and pull it out.
- ⚠ In the unlikely event that the battery has leaked acid, **avoid all contact with it and any surfaces it has affected**. Wear protective gloves and wipe up any residue with a paper towel. Secure the battery in a plastic bag and dispose of it properly.
- ⚠ If you get battery acid on your skin or in your eye, flush immediately with water and seek medical attention.

To reassemble your device, follow these instructions in reverse order.