



Disassembling Laptop Toshiba Satellite P855 P850 plus Hinge FIX,

I have described how to open and fully disassemble an laptop Toshiba Satellite P885 (more exact, P855-339). The info is for any Toshiba Satellite P855 or P850. also how to repair the hinge (broken, I have dropped the laptop on the floor).

Written By: Oscar SOTAN



INTRODUCTION

I have described how to open and fully disassemble an laptop Toshiba Satellite P885 (more exact, P855-339). The info is for any Toshiba Satellite P855 or P850.

also how to repair the hinge (broken, I have dropped the laptop on the floor).

<https://www.youtube.com/watch?v=-OfPH12F...>



TOOLS:

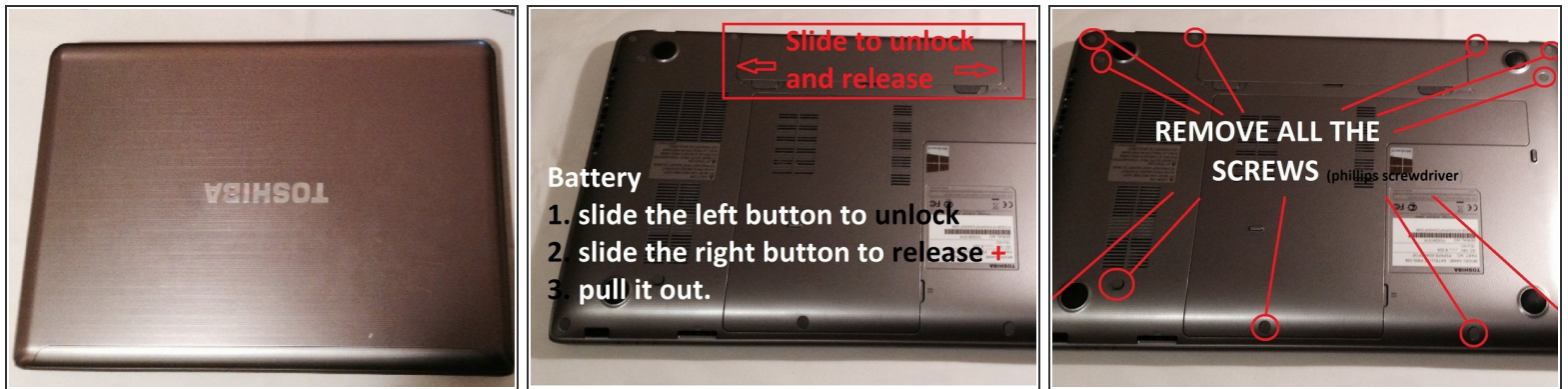
- [Phillips #0 Screwdriver](#) (1)
- [Cutter](#) (1)



PARTS:

- [4 x dowel pin](#) (1)

Step 1 — First look



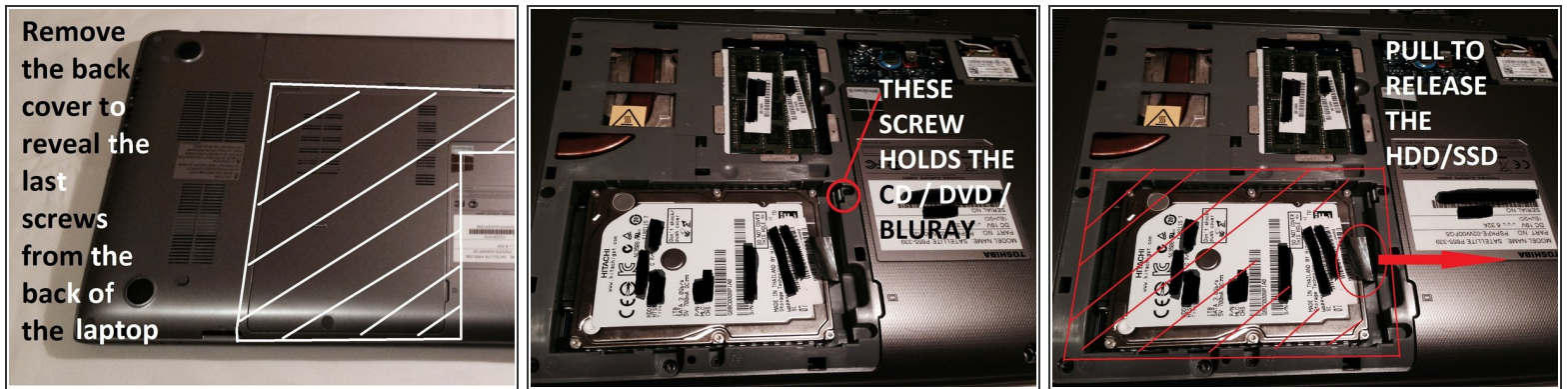
i To open the laptop, first you have to unscrew the back-screws.

- 1. remove the plastic/rubber caps
- 2. unscrew the 12 screws.

! ATTN: Do not forget!

- unplug the laptop from power source & remove the battery
- unscrew the 3 tiny screws behind the battery
- keep the lid closed till later on

Step 2 — Back - HDD, WIFI card,



i Here you have some details regarding the back of the laptop. After you got read of the back cover you can access the following:

- 1. WIFI card - Easy to change / replace There are two cables attached to it. Remove them, then unscrew the screw that holds the card in place and lift gently up - DONE.
- 2. HDD / SSD. All you have to do is grab and pull the ribbon (as in photo). There are a few extra steps to change it.

Step 3 — Removing the keyboard



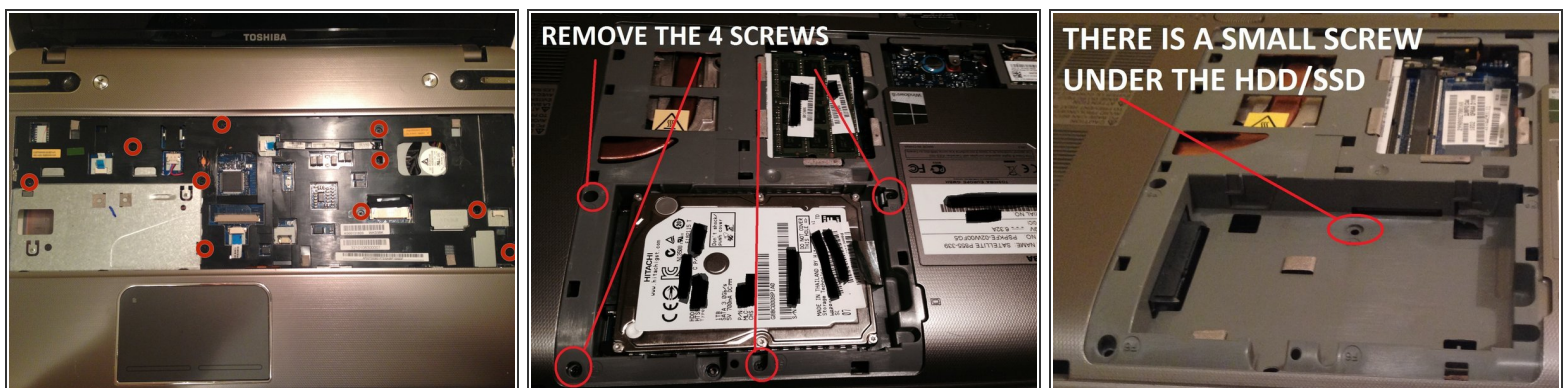
i Now to remove or change the keyboard

- 1. Insert gently the cutter (or other sharp tool) and press towards the screen & flip up slowly.
- To remove it completely unplug the two connectors.

i After removing the keyboard you find:

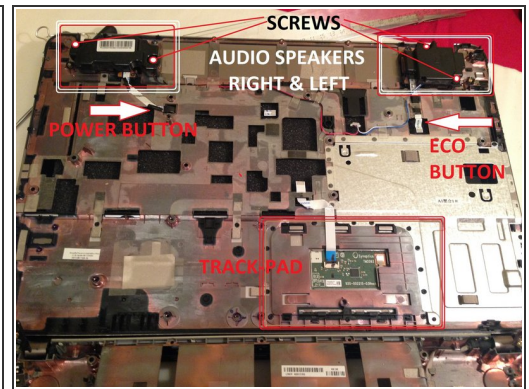
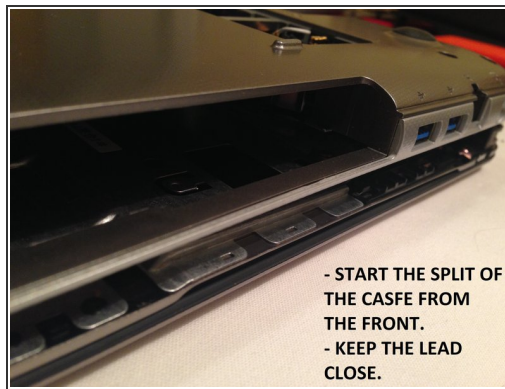
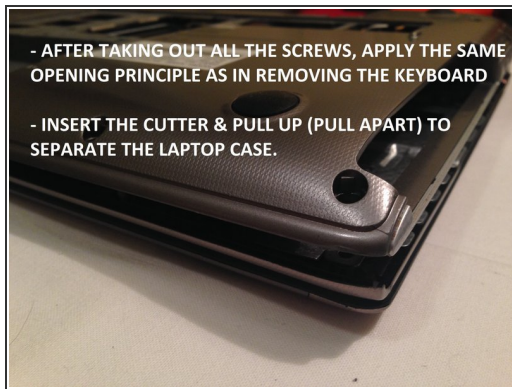
- 1.ECO Button
- 2. Sound
- 3. Power button
- 4. Mouse pad

Step 4 — Removing the screws to open the case



i remove all the screws as shown in the images.

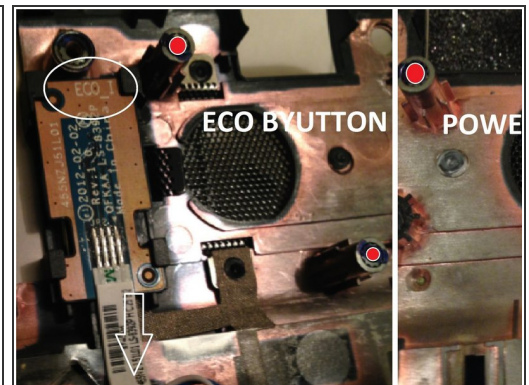
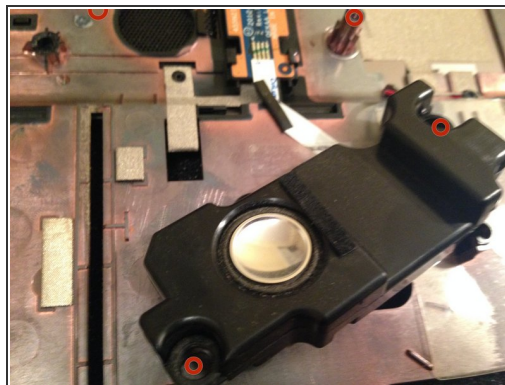
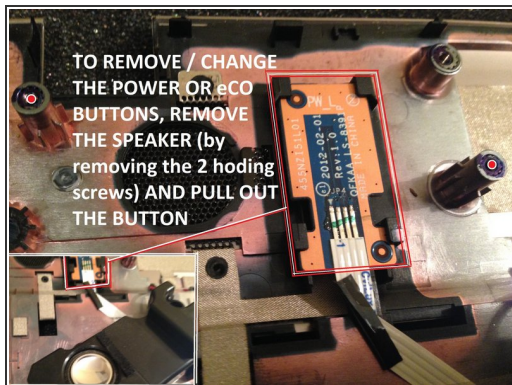
Step 5 — Splitting the case an upper side (under theh keyboard)



i Opening the case is easy, follow the steps as shown.

- To change / remove the speakers remove the screws.
- To change / remove the Eco/3D button or power button, yo have to remove first the speakers.

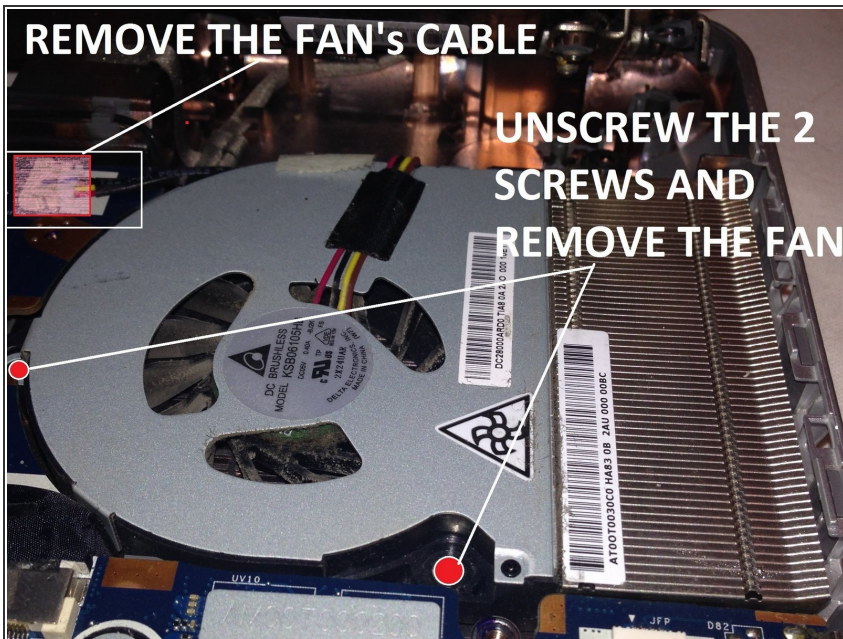
Step 6 — Change / remove speakers and buttons (Power and Eco/3D)



✦ Still more steps to come :), probably till 12... so min 6 more.

✦ I will show you how to repair a broken hinge (plastic broken) - easy.

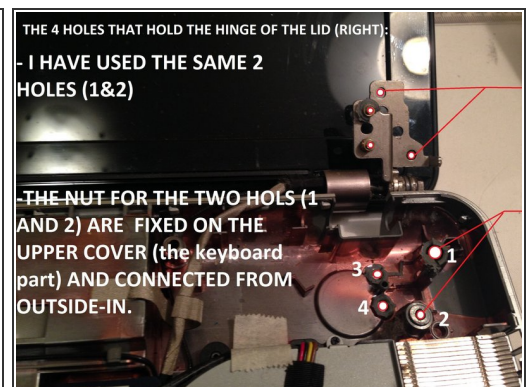
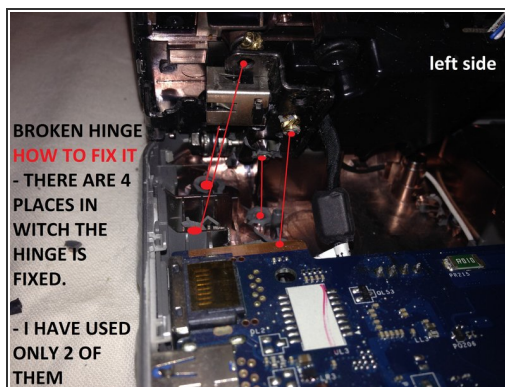
Step 7 — CPU fan cable remove



- Remove the fan cable

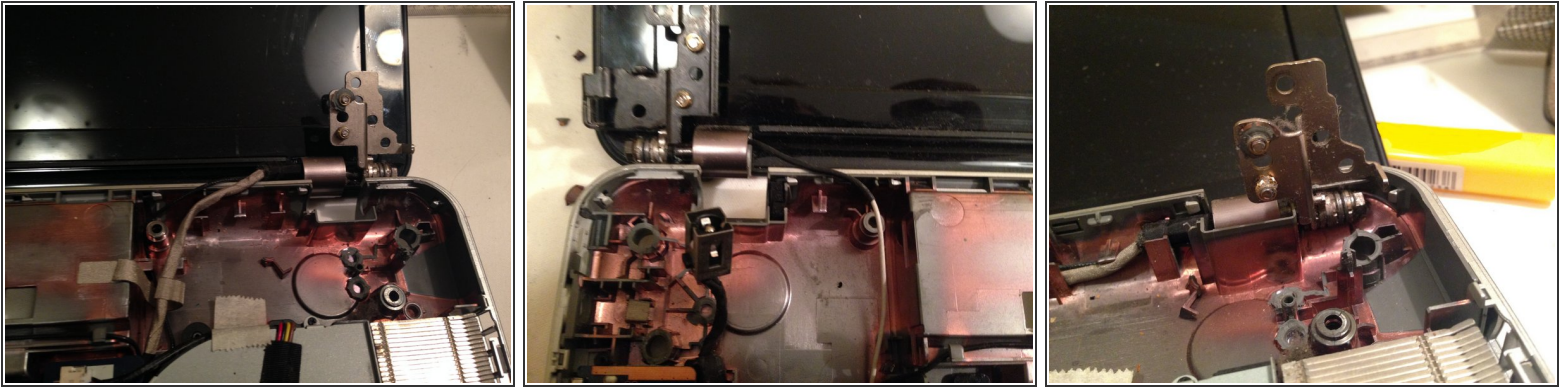
❗ If you want to change the CPU fan, there are 2 screws that you have to remove (picture)

Step 8 — Start repairing the broken hinge



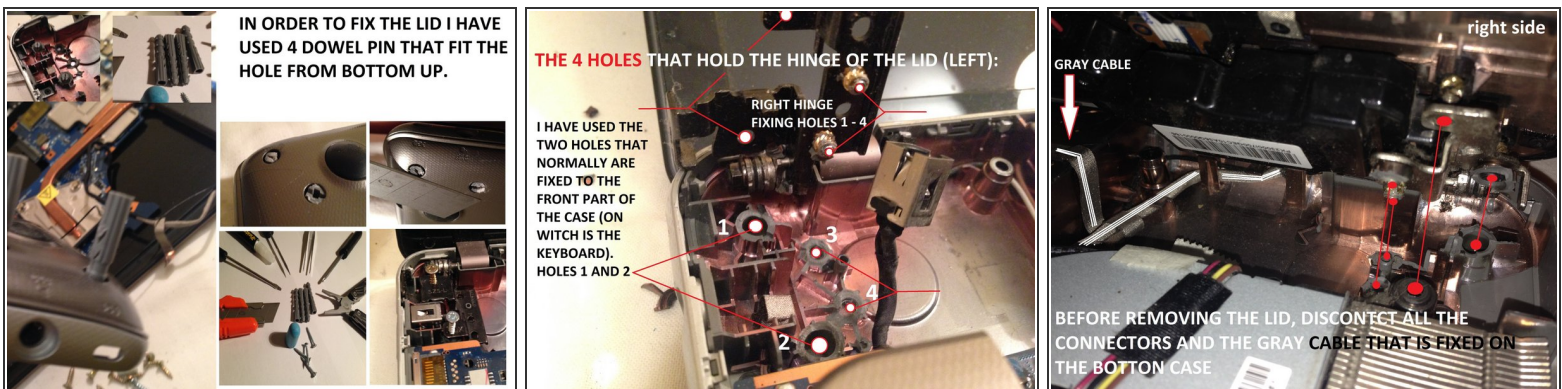
❗ Broken hinge, detailed photo

Step 9 — Repairing the broken hinge [detailed photo]



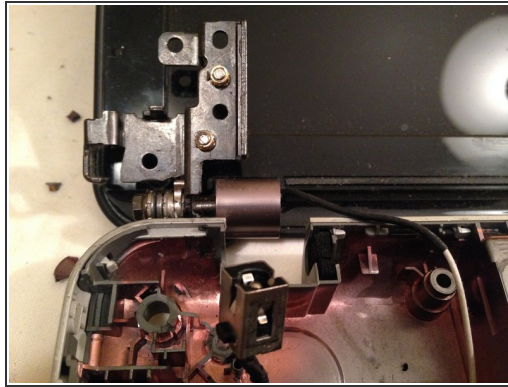
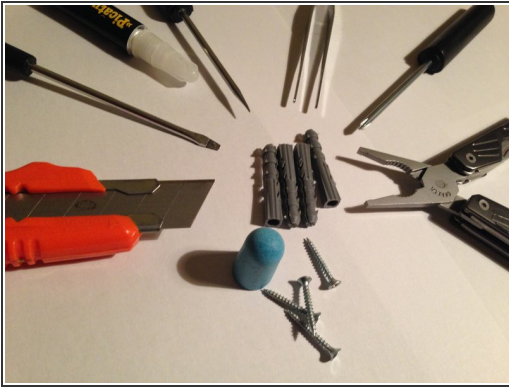
 Repairing the broken hinge [detailed photo]

Step 10 — Repairing the broken hinge [detailed photo] (2)



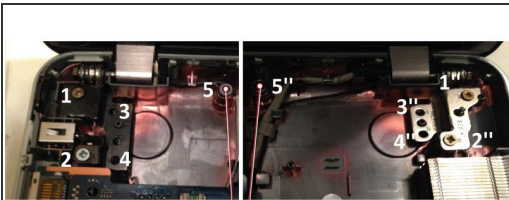
- do not forget about the grey cable attached on the bottom side.
- When reattaching the cable, put some thermal paste on the contact (gray cable)

Step 11 — Fixing the hinge with plastic dowel pin

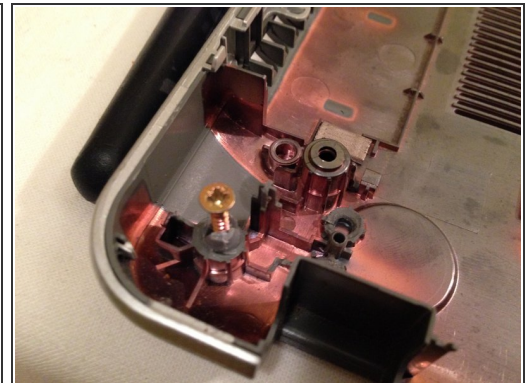


- insert the plastic dowel pin from bottom-up and level it inside at the same height with other screw holes

Step 12 — Detailed img for inserting the plastic dowel pin

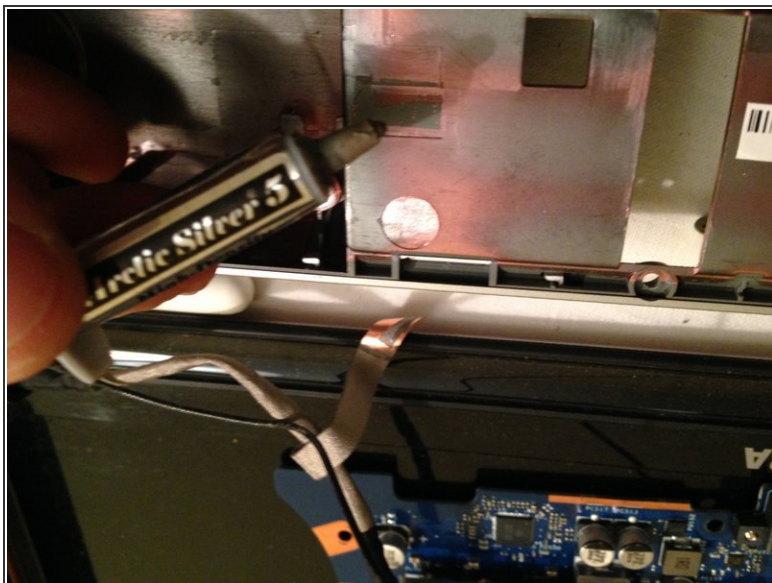


The two points are going to fix the upper part ((keyboard)) on to the base of the laptop from factory, the upper and lower art are hod together by 5 screws on left and 5 on right.



- follow the pics

Step 13



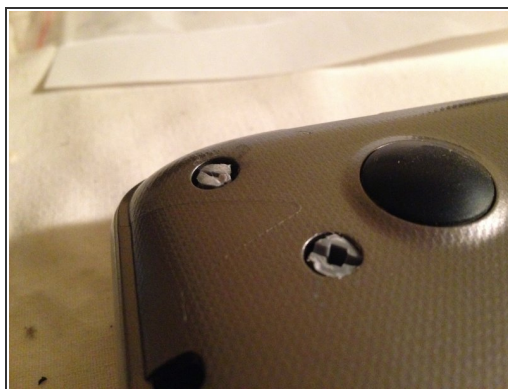
IN ORDER TO FINISH THE REPAIR, DO NOT FORGET TO FIX BACK THE GRAY CABLE TO THE CASE.

YOU CAN USE THERMAL PASTE (I HAVE USED ONA BASED ON SILVER)



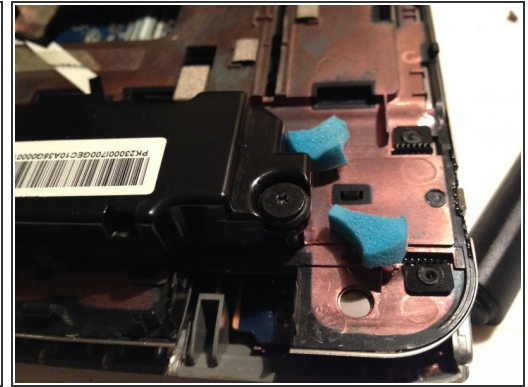
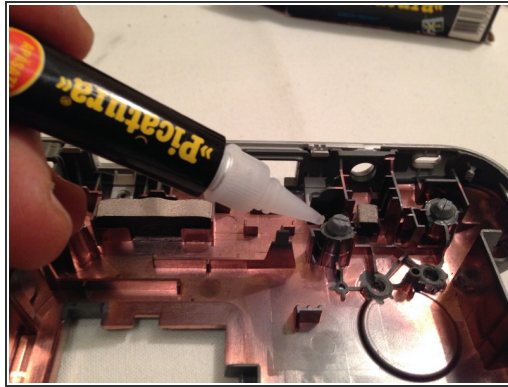
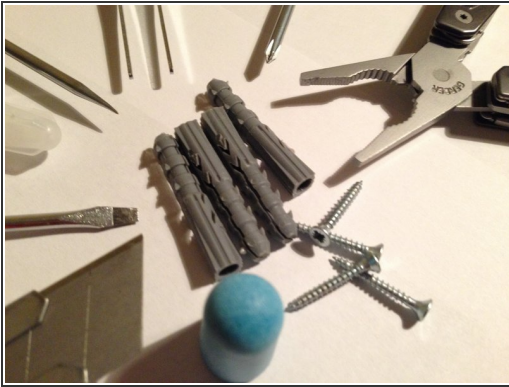
- add some thermalpaste to the gray cable

Step 14 — Outside & inside finishing



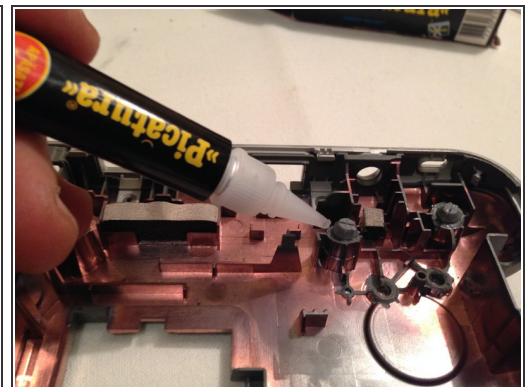
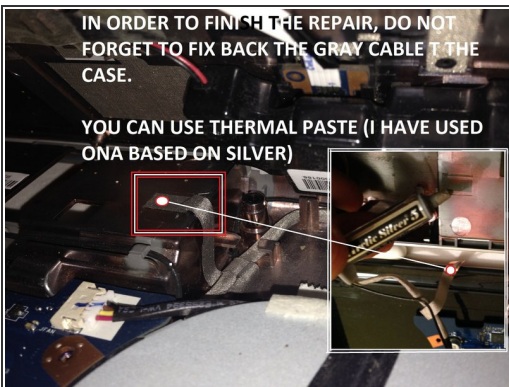
- Cut the excess plastic from the dowel pin
- Put some super-glue to fix it in place

Step 15 — Outside & inside finishing (2)



- I have glued some foam near the speakers in order to protect the area

Step 16 — Final touches



- Glue inside the plastic dowel pin
- Use thermal paste to fix the gray cable (i have used silver paste)

To reassemble your device, follow these instructions in reverse order.