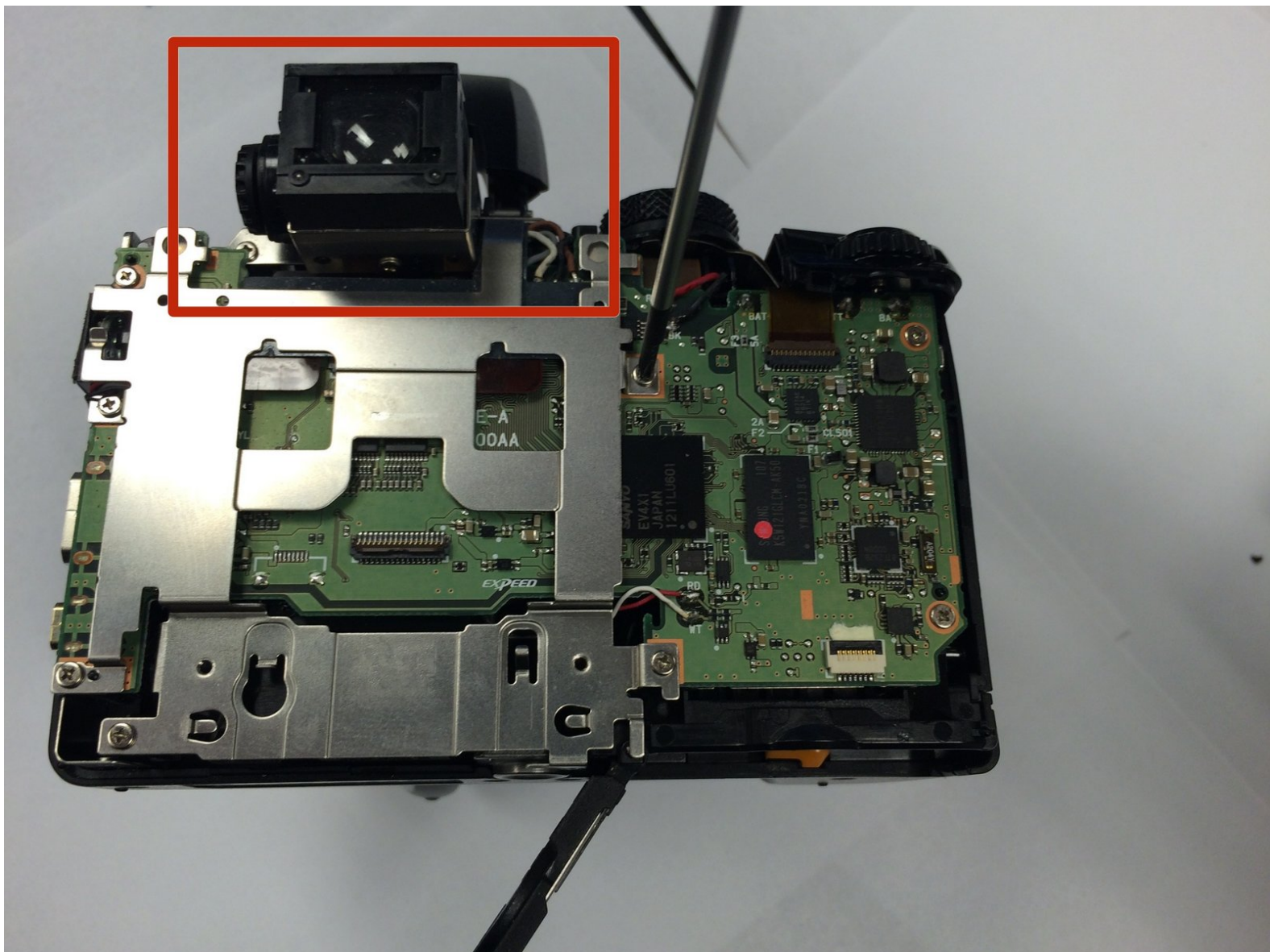




Nikon Coolpix P100 Viewfinder Replacement

This guide will show you how to replace the camera's flash

Written By: Nghiem Ngo



INTRODUCTION

This will show you how to open up the camera and replace the camera flash.



TOOLS:

- [Phillips #00 Screwdriver](#) (1)
 - [iFixit Opening Tools](#) (1)
-

Step 1 — Nikon Coolpix P100 Motherboard Access



- Turn the front of the camera toward you.

Step 2



- On the left side of the camera, use a Phillips #00 Precision Screwdriver to remove the two marked screws.

Step 3



- On the right side of the camera, remove the first visible screw above the HDMI and A/V OUT cover.

Step 4



- Lift the HDMI and A/V OUT cover to access the hidden screw between the two ports.
- Remove the screw

Step 5



- Flip the camera upside down and remove the seven marked screws.

Step 6



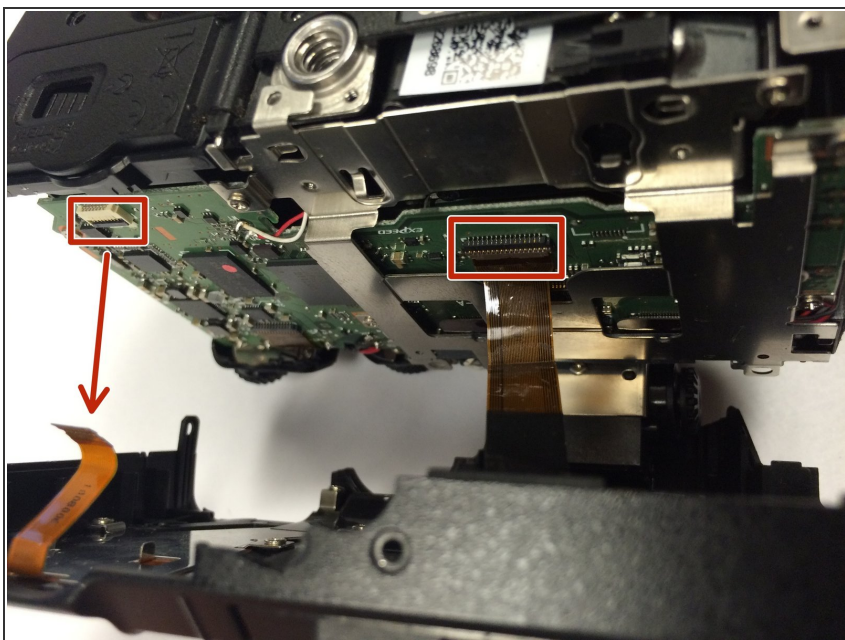
- Turn the back of the camera toward you.
- Lift the display panel and remove the two marked screws

Step 7



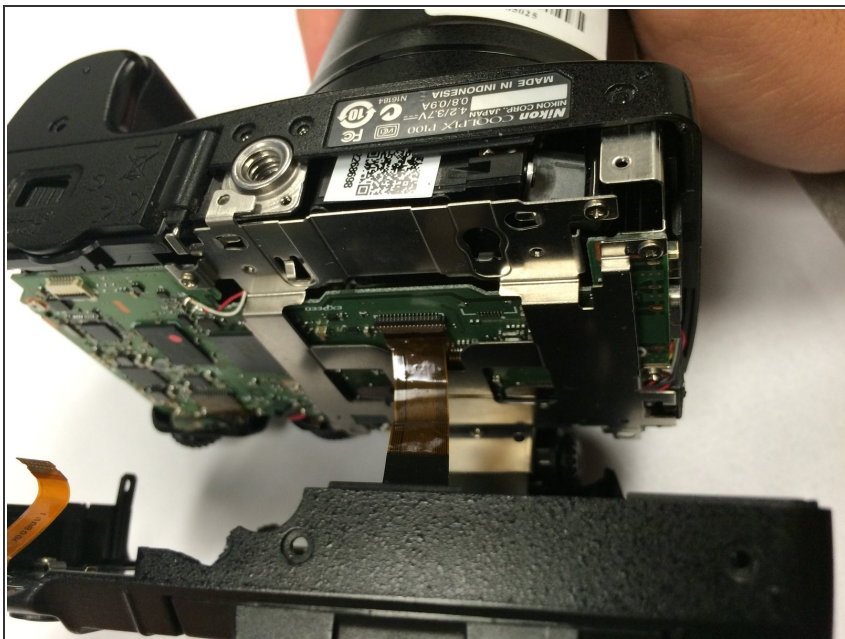
- Use a plastic iFixit opening tool to gently loosen the top and sides of the camera.

Step 8



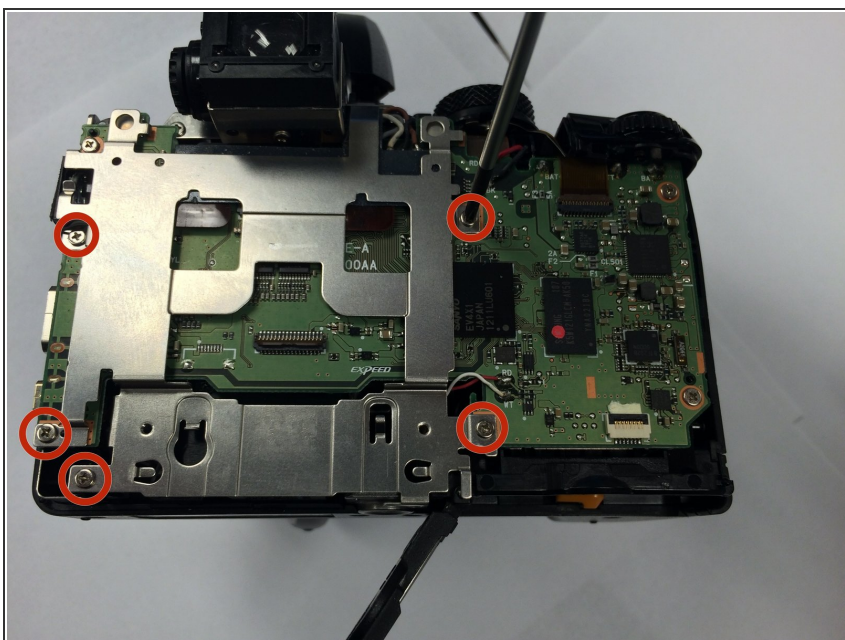
- Before fully opening the camera, identify the two marked ribbon cables
- Properly detach the ribbons before proceeding

Step 9



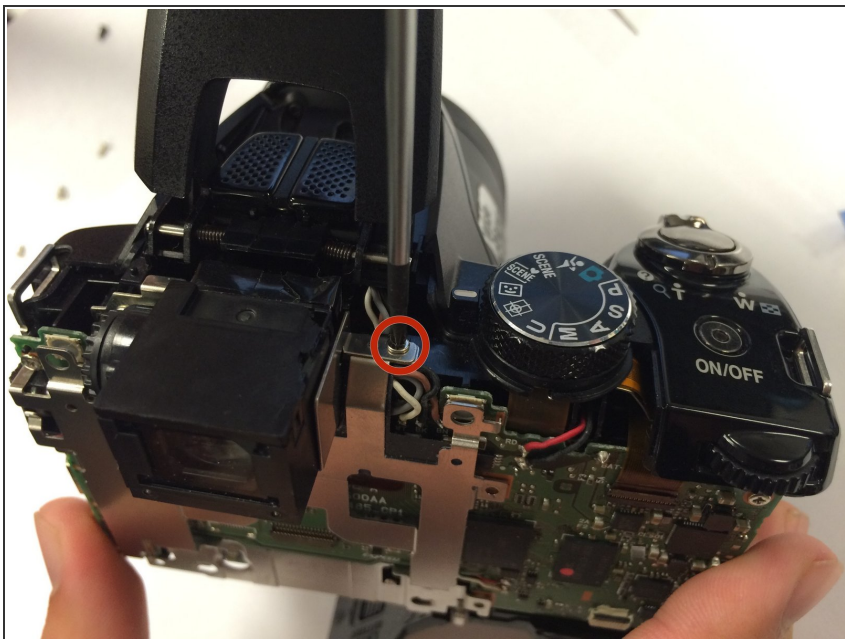
- Carefully open the camera.
- ❗ Now you have partial access to the camera's motherboard.

Step 10



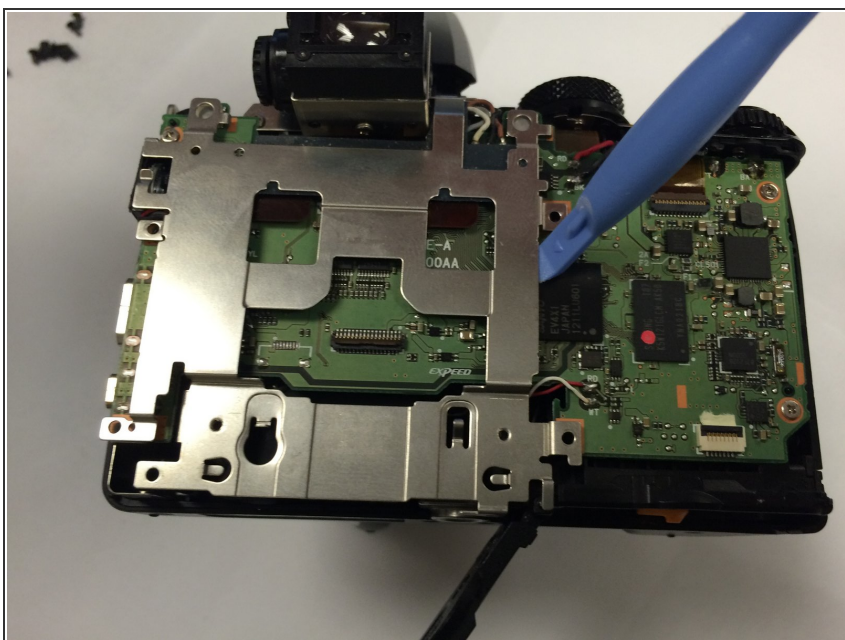
- Remove the five indicated screws that are attached to the metal plate.

Step 11



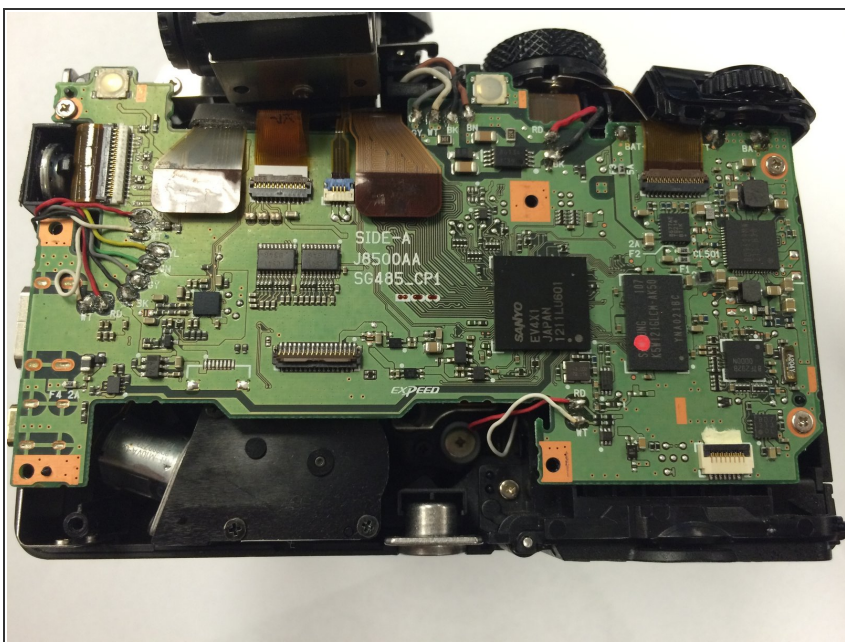
- Remove the hidden top screw that is attached to the metal plate.

Step 12



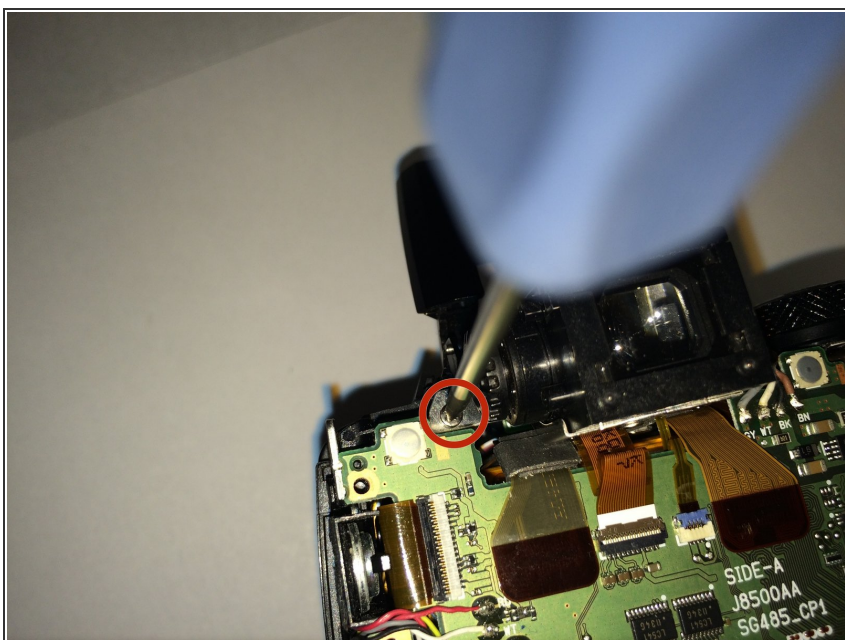
- Use a plastic iFixit opening tool to carefully loosen the metal plate.
- Remove the metal plate to access the camera's motherboard.

Step 13



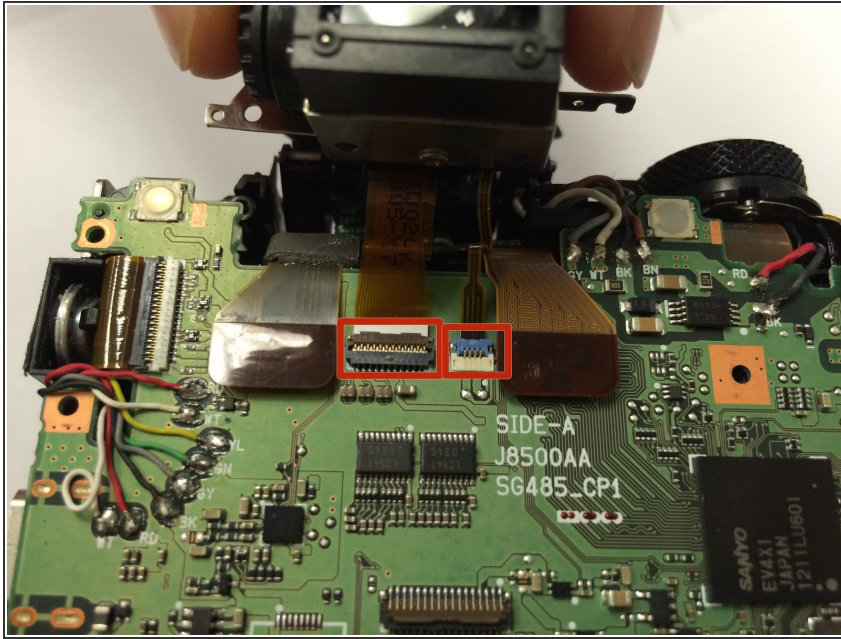
- Now you have access to the camera's motherboard


Step 14 — Viewfinder



- Remove the screw that is located on the left of the view finder.

Step 15



 Carefully detach the two ribbon cables and detach the viewfinder.

To reassemble your device, follow these instructions in reverse order.