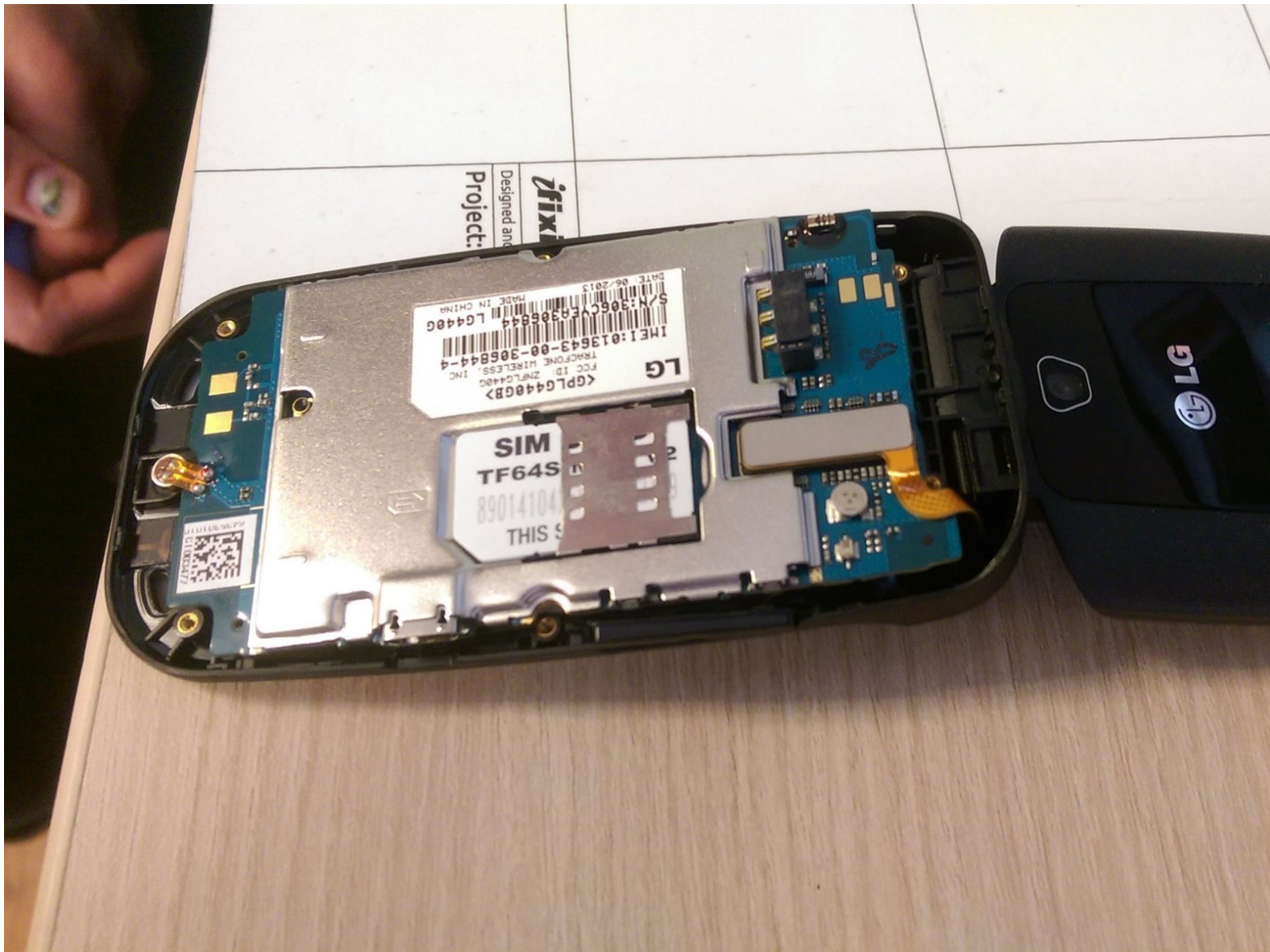




LG 440G Logic Board Replacement

removing logic board

Written By: JP Belanger





TOOLS:

- [iFixit Opening Tool](#) (1)
-

Step 1 — Turn off phone.



- Turn the device off.
- To do so, press and hold the red button.

Step 2 — Flip phone.



- Flip the phone over.

Step 3 — Rear cover removal.



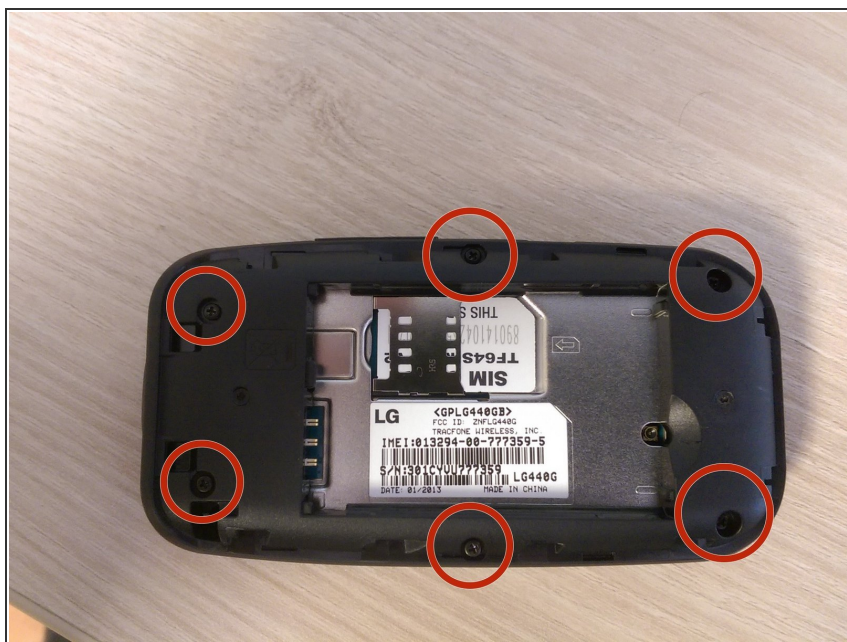
- Slide the rear cover downward
- Lift it off to access the battery

Step 4 — Removal of battery.



- Locate the small rounded recess to get access to the battery
- Gently, lift the battery

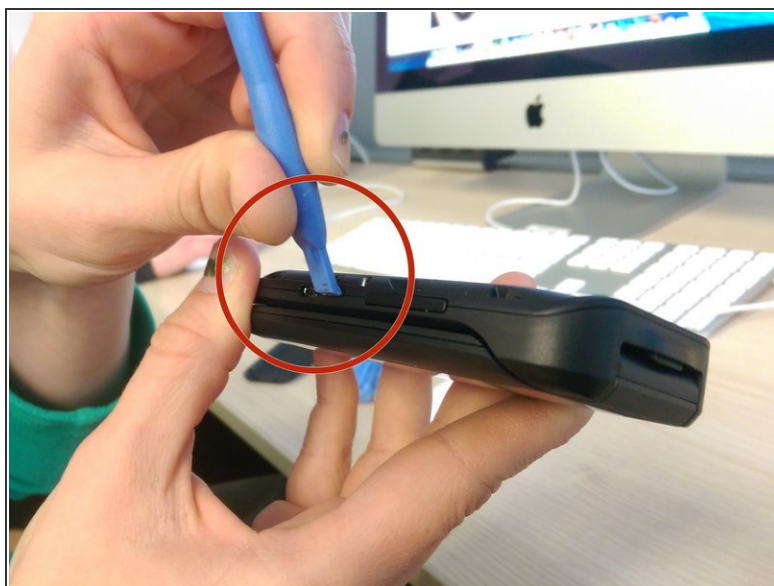
Step 5 — Unscrew six screws along edges of casing



- Use a Phillips #00 screw driver to remove six screws.

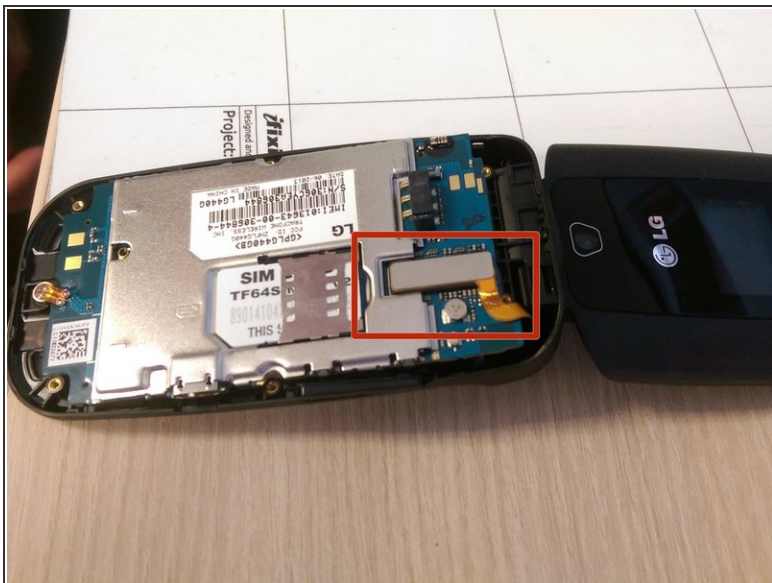
ⓘ Save screws for reassembly.

Step 6 — Lift casing cover



- Run the plastic opening tool along the edge of the phone to release the casing cover.
- Lift the casing cover.

Step 7 — Remove rectangular piece (with orange tape attached)



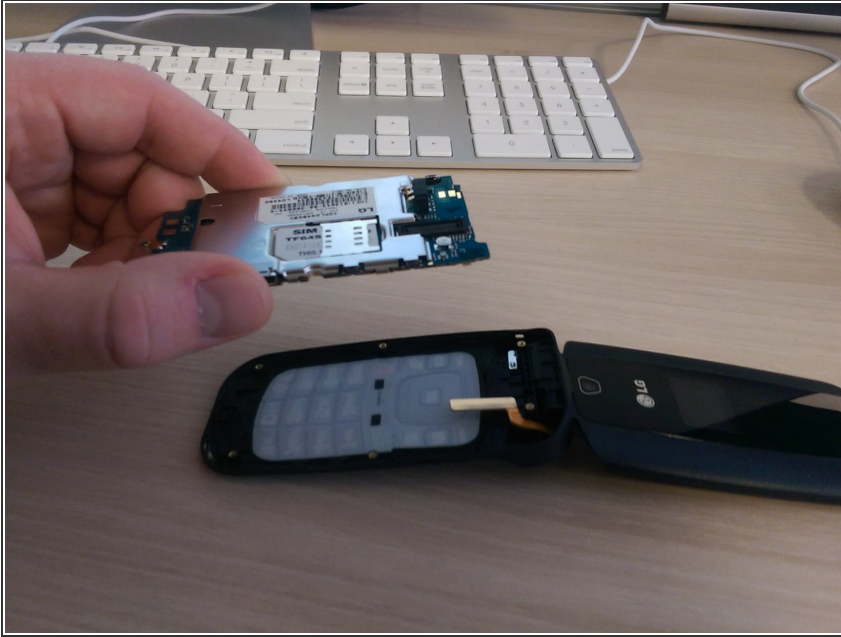
- Use the plastic opening tool or fingernail to lift the rectangular piece up. The piece can be identified by the orange tape attached to it.

Step 8 — Dislodge logic board



- Dislodge the logic board using a plastic opening tool.

Step 9 — Lift logic board out



- Remove the logic board by lifting up.

To reassemble your device, follow these instructions in reverse order.