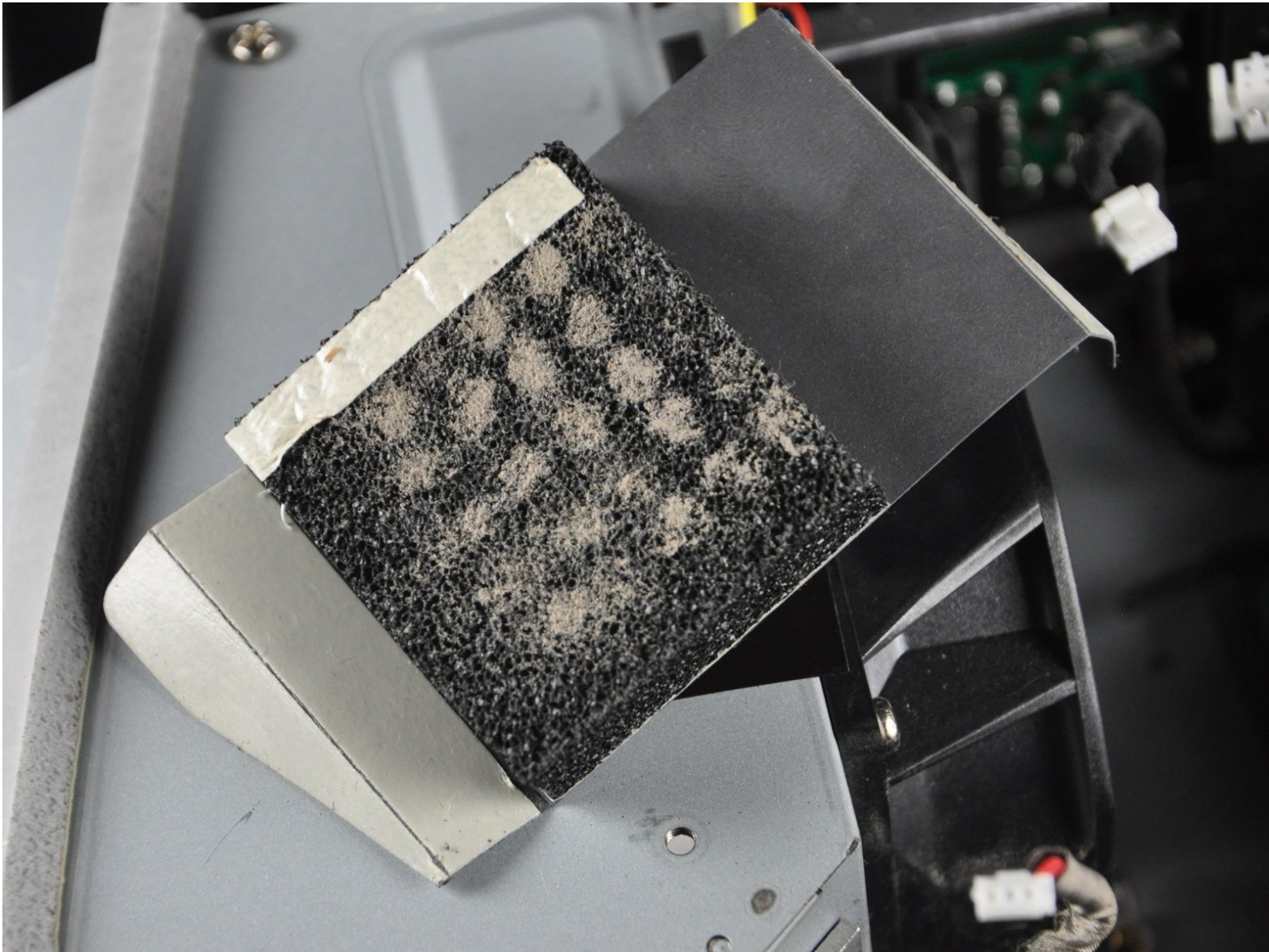




Optoma HD20 Air Filter Replacement

Device overheating when being use? Try replacing the air filter.

Written By: Trevor



INTRODUCTION

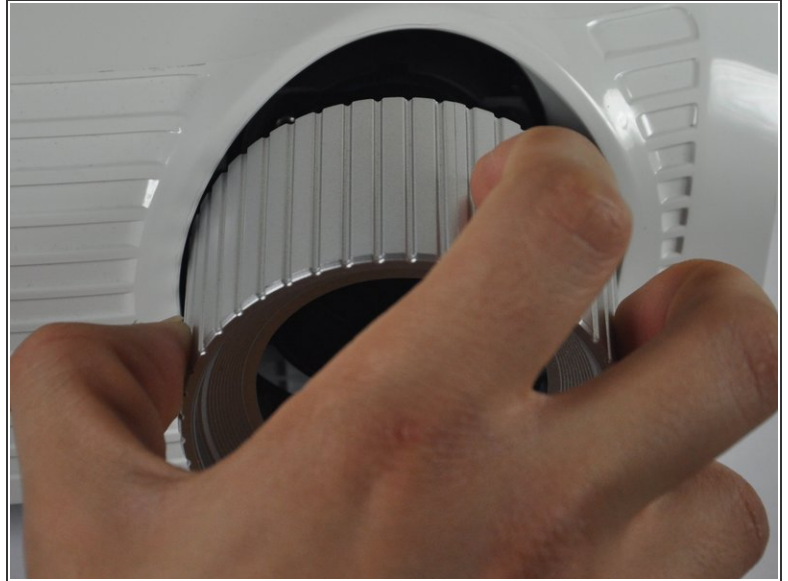
Use this guide to remove the air filter from your Optoma HD20.



TOOLS:

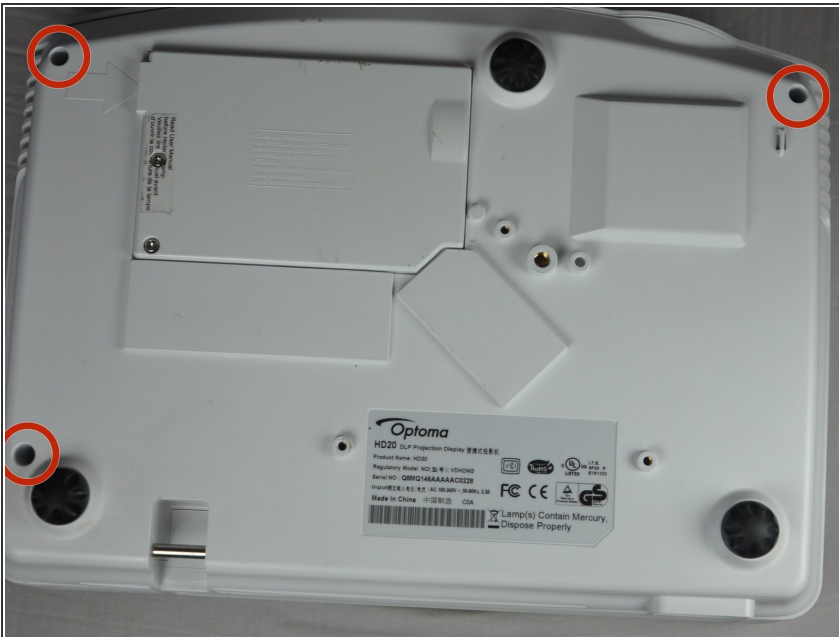
- [iFixit Opening Tool](#) (1)
 - [Phillips #1 Screwdriver](#) (1)
-

Step 1 — Disassembling Optoma HD20 Cover



- Twist the focal cap clockwise until it is fully extended.
- Remove the focal cap by pulling it straight out.

Step 2



- Use a Phillips #1 screwdriver to remove the three 7.5mm screws on the bottom of the device.

Step 3



- Use a plastic opening tool to gently pry the top cover off of the device.
- ⓘ It is easier to pry off the cover from the back side just above the HDMI ports.

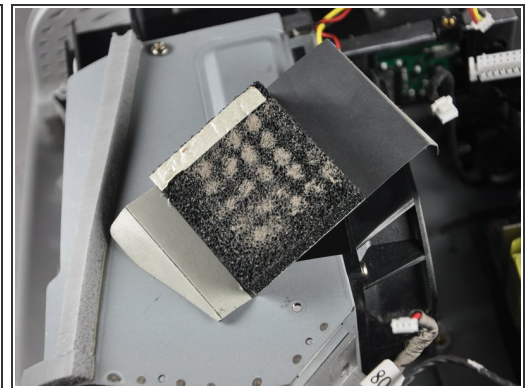
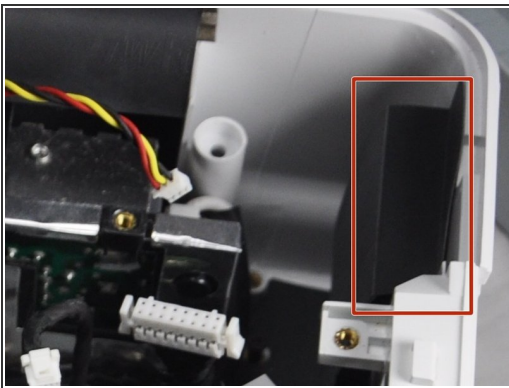
Step 4



⚠ When removing the cover, be cautious of the ribbon connecting the top buttons to the main circuit board. The ribbon must be disconnected before proceeding.

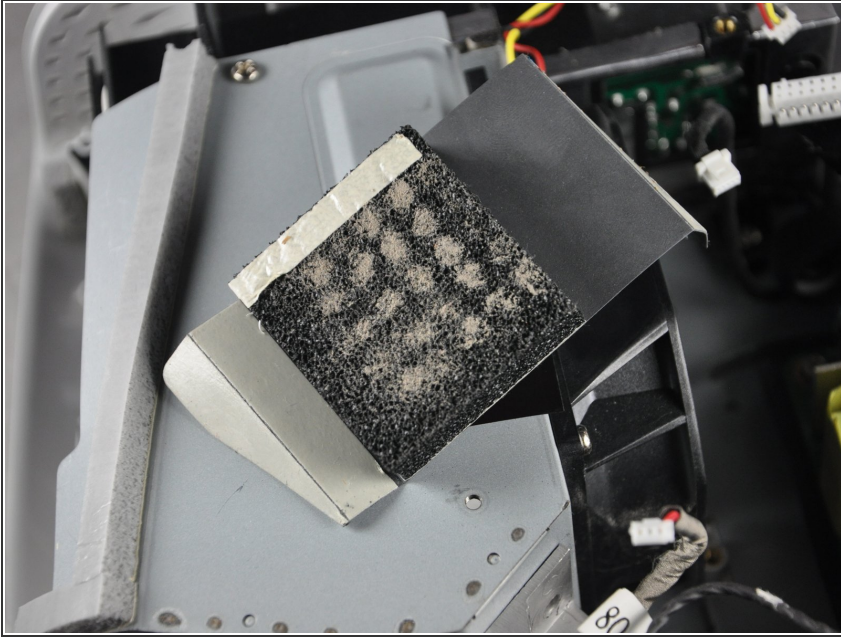
- Remove the ribbon by disconnecting it from the main circuit board.
- Lift up the clip holding it down and pull the ribbon out.

Step 5 — Air Filter



- Carefully peel off each air filter from the device
- Pull up on the air filter to remove it.

Step 6



- Remove the air filter from the device.

⚠ Try not to deposit dirt from the air filter into the inside of the device.

To reassemble your device, follow these instructions in reverse order.