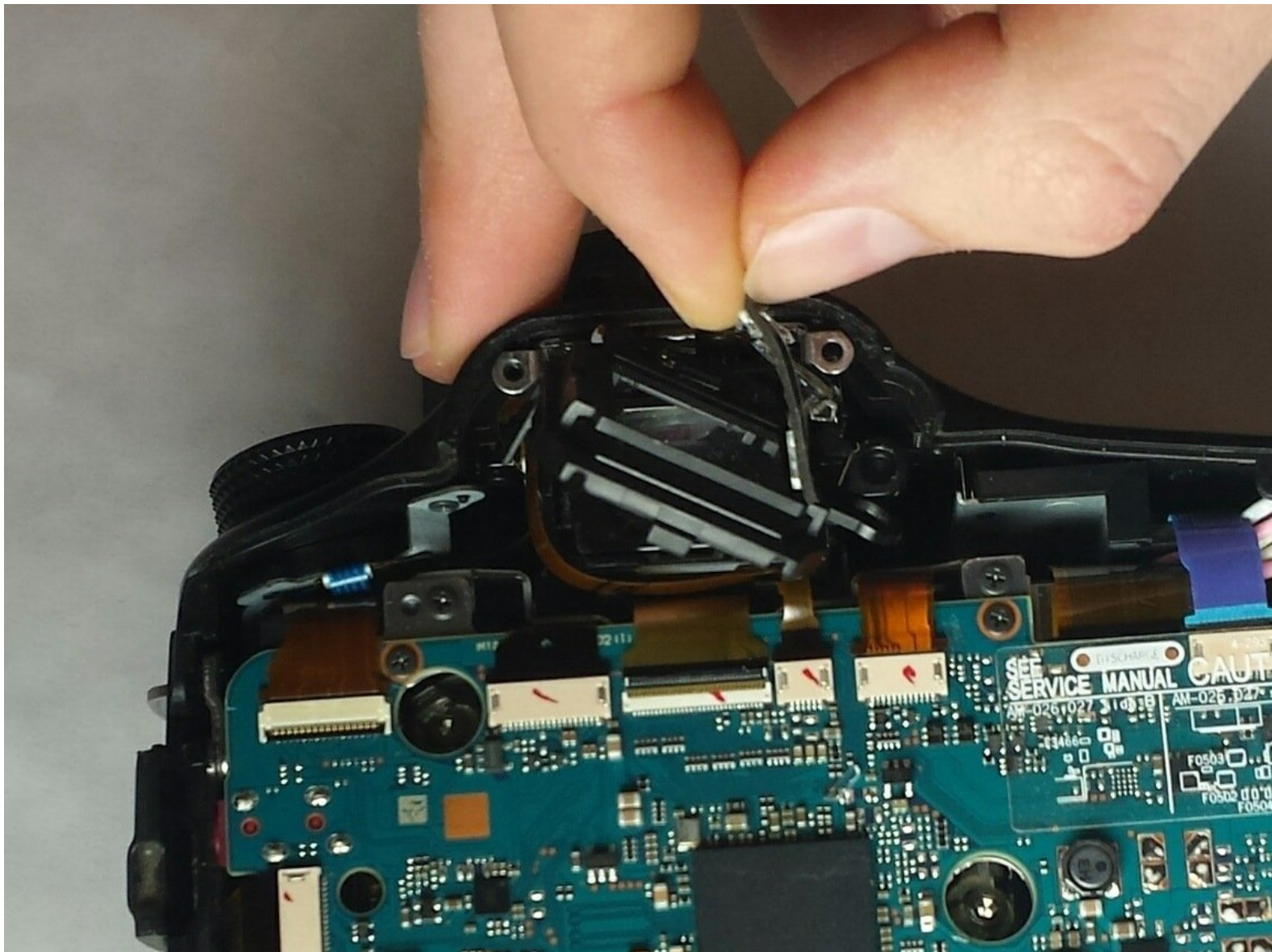




Sony SLT-A57 Optical Viewer Replacement

How to replace Sony SLT-A57 optical viewer.

Written By: AJ Draper



INTRODUCTION

This repair guide will aid you in accessing the optical viewer of your Sony SLT-A57 camera in order to replace the viewfinder. You will need a new Sony SLT-A57 viewfinder to substitute the old one. You will also need a phillips #0 screwdriver and an 8" needle nose plier. This repair does not require any special skills.



TOOLS:

- [Phillips #0 Screwdriver](#) (1)
- [8" Needle Nose Plier](#) (1)



PARTS:

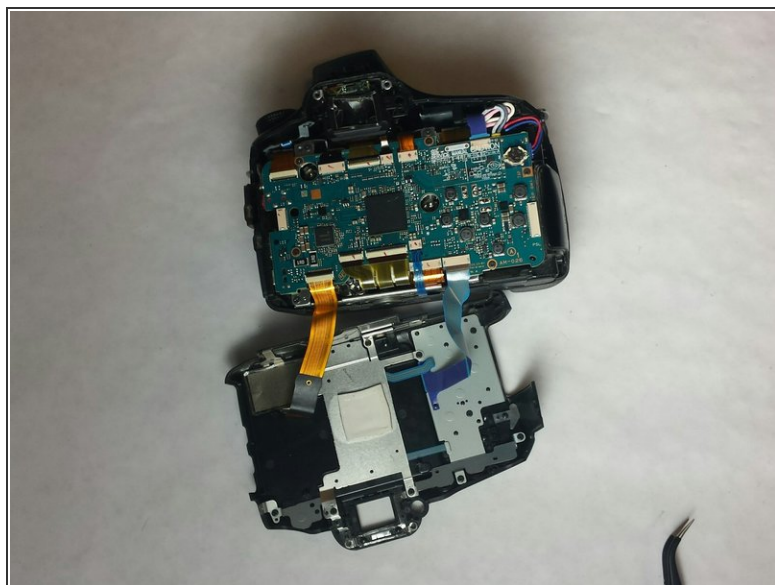
- [Sony SLT-A57 Viewfinder](#) (1)

Step 1 — Optical Viewer



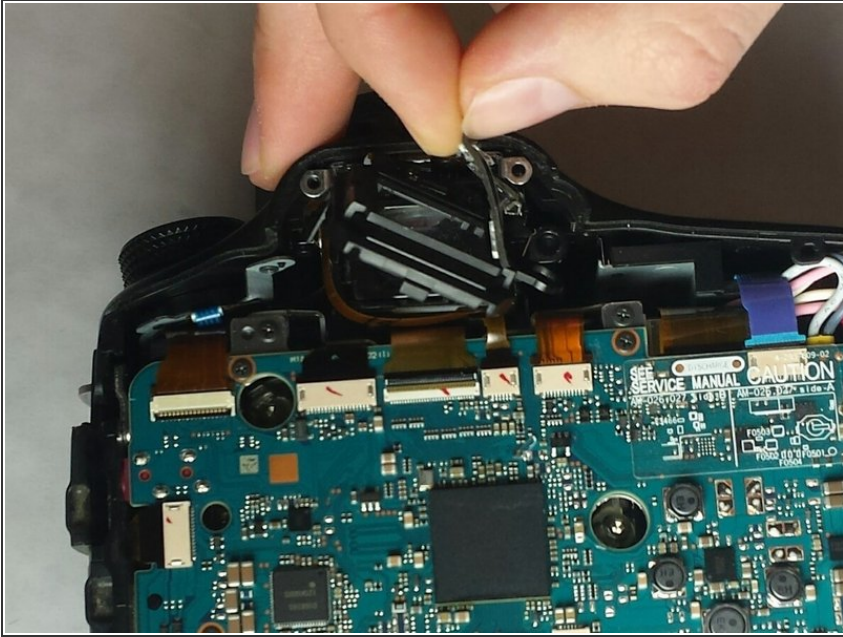
- Unscrew every screw on the side and back camera to pry open the back plastic portion of the camera. The screws will be 2.1mm and 1.5mm.

Step 2



- Once all of the screws are out, open the camera as shown in the picture.

Step 3



- Replace the optical viewer with a new one.

To reassemble your device, follow these instructions in reverse order.