



# Magic Bullet NutriBullet Power Cord Replacement

This guide instructs you on how to replace the power cord, which serves as a power supply to the NutriBullet powerbase.

Written By: Geary Yu



## INTRODUCTION

Is there a tear or cut in your cord? If so, refer to this guide to replace the power cord. This guide will require some soldering experience.

---

### TOOLS:

- [Phillips #2 Screwdriver](#) (1)
  - [Soldering Iron](#) (1)
  - [Wire Cutter](#) (1)
-

## Step 1 — Power Cord



- Before beginning, make sure the device is unplugged.
- With a Phillips head #2 screwdriver, begin unscrewing the four 10mm screws located on the bottom of the power base.

## Step 2



- Once the screws are removed, pull the plastic base up gently.
- ⚠ Once the plastic base is removed, there is a fan located in the center of the powerbase. Make sure the cord does not get caught or frayed by the fan.

### Step 3




- Gently lift the power cord from its side slot and place it to the side.

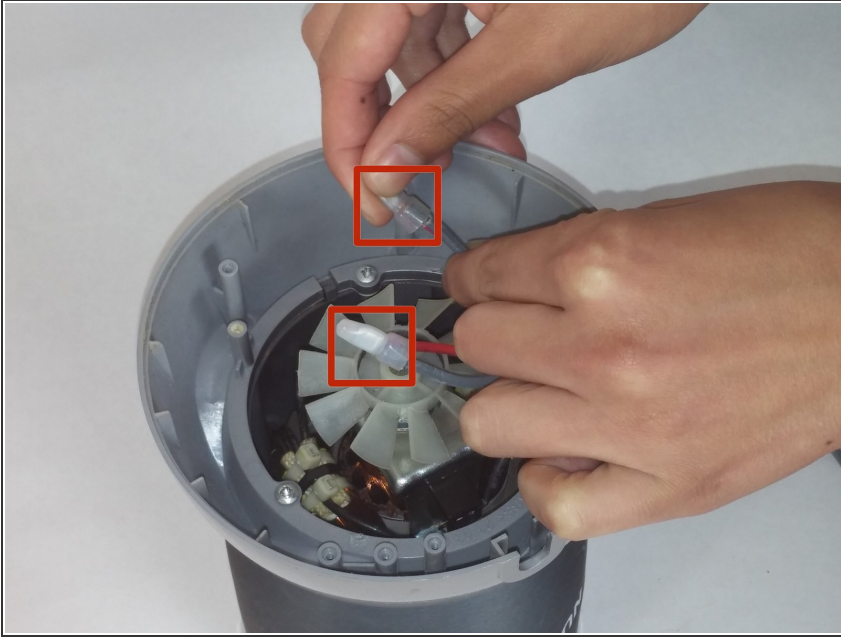
### Step 4



- With the Phillips head #2 screwdriver, remove the two 10mm screws that secure the white bracket.

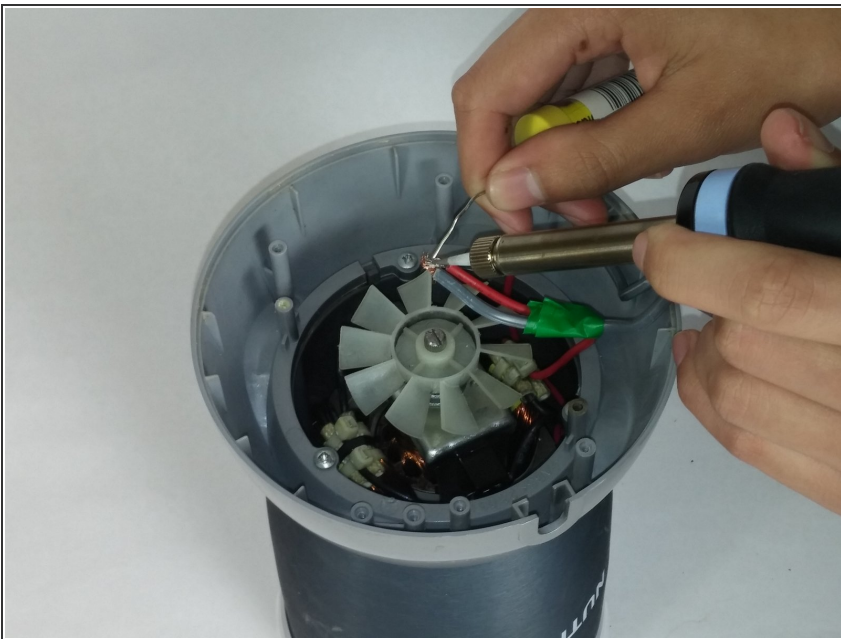
 The white safety bracket holds the cord down. After removing it, the cord will be free.

## Step 5



- After removing the gray base and silver casing, the wires will now be free and you will have easy access to them.
- Gently pull out the two plastic covers at the end of the wires.

## Step 6



- Use tape or clamps to hold the wires together for an easy soldering experience.
- Using a soldering iron, solder your new wire to the red wire.

Since this guide replacement requires cutting wires, if you want to reassemble this device, you must first re-solder new wires before following the steps backwards to reassemble the device.

