



# Kodak Easyshare z650 Teardown

Kodak Easyshare z650 Teardown

Written By: pollytintop



---

## INTRODUCTION

Basic teardown of kodak z650 into main components; outer cover, LCD, viewfinder, motherboard, lens and lens housing.



### TOOLS:

- [Phillips #0 Screwdriver](#) (1)
  - [Spudger](#) (1)
-

## Step 1 — Kodak Easyshare z650 Teardown



- With camera turned off remove battery and memory cards.

## Step 2



- Remove: 2 screws from right side.
- 2 screws from base.
- 2 screws from left side.

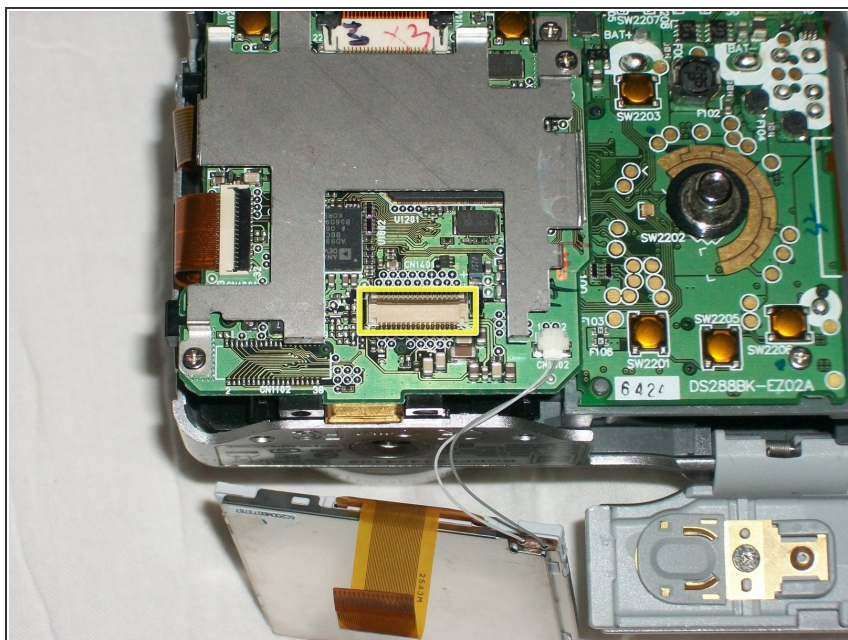


## Step 3



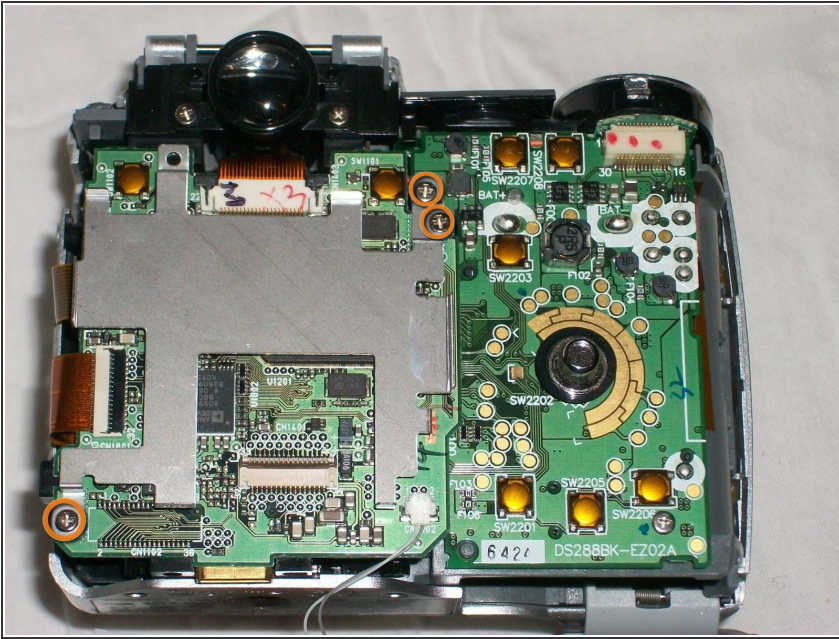
- With battery cover open and camera lens pointing down, gently prise the rear case free.

## Step 4



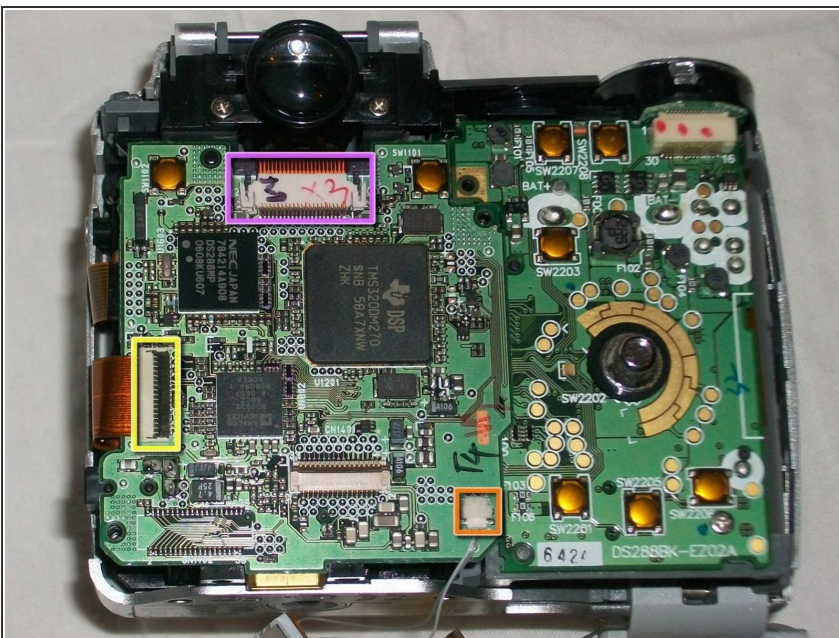
- Lift LCD clear of metal housing,
- Then, lift tab on connector.
- Slide out ribbon cable.

## Step 5



- Remove the 3 screws from LCD metal housing plate
- And lift off metal housing plate.

## Step 6

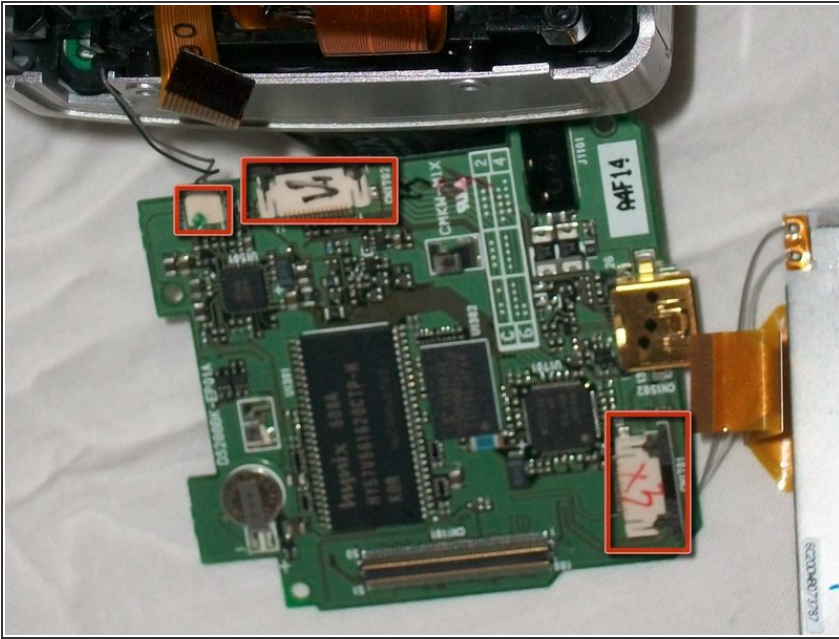


- Use fingernails or small flathead screw driver to push black tabs on view finder cable connector away from board connector.
- Slide screwdriver beneath length of flex and gently lift upwards to remove flex from connector.
- Lift flap on lens flex and gently slide flex out.
- Use finger nails to gently prise small white connector from LCD (bottom right of board) free.

⚠ Be careful, do not pull it by wires.



## Step 7



**⚠** Lift board up slightly to reveal 2 ribbon flex and 1 wire connector still attached beneath board-remove flex before lifting board off completely.

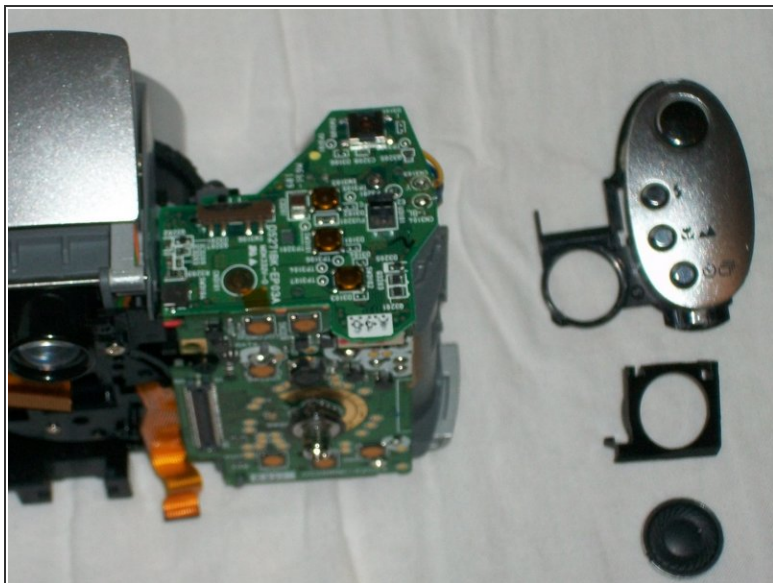
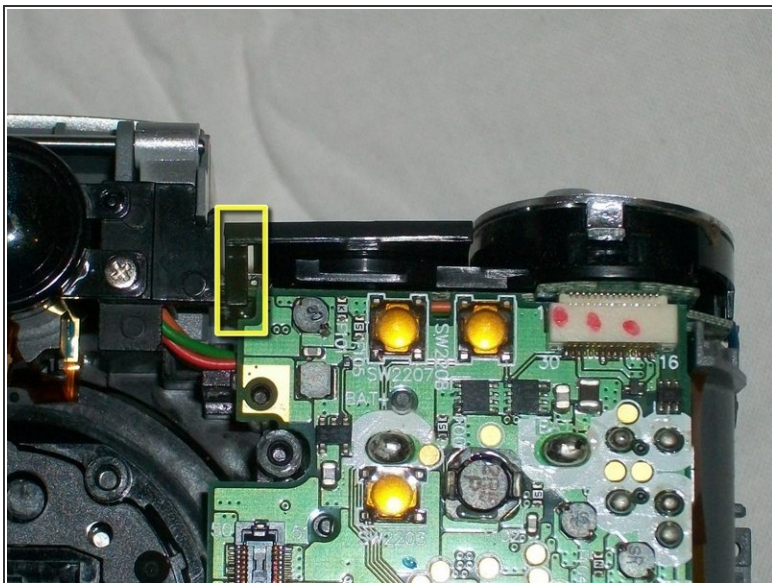
- Remove bottom flex first.
- Then use fingernails to gently pull out wire connector from lens.
- And slide tabs on connectors from lens/shutter and lens screen horizontally away from board and then slide flex cables free.

## Step 8



- Slide "off" button to favorites.
- Turn camera upside down and lift front housing over tripod screw.
- Gently prise front housing free of main camera body.
- Clear plastic seal and thin rubber seal on camera lens may drop out as housing is freed.

## Step 9



- Use fingernail or small flathead screwdriver to lift plastic tab free from uppermost board.
- Remove button console and speaker/speaker housing from top of camera.

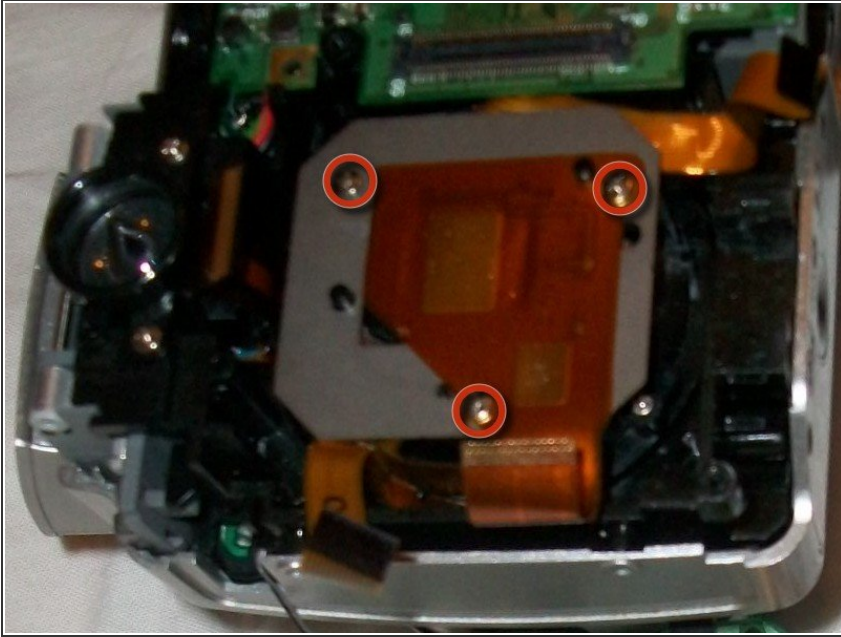
## Step 10



- Remove 2 screws from either side of view finder.
- Remove view finder

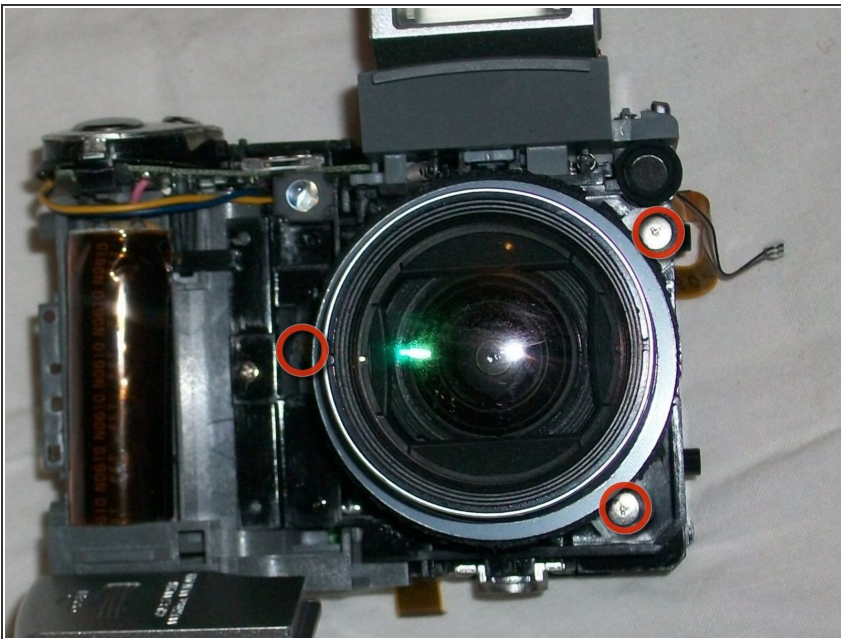


## Step 11



- ⚠ remove 3 screws holding image screen to back of lens.
- take care that cover and seal from screen don't fall off

## Step 12



- Turn camera over so that lens is facing you.
- Remove 3 screws holding barrel of lens to main frame of camera.
- Pull lens barrel towards you, take care as flexes still attached at rear of lens.



## Step 13



- Turn lens over so that rear of lens is facing up.
- Lift flex on right of rear lens barrel to reveal screw, then remove 3 screws on rear of lens.
- Remove 1 screw from left side of lens barrel (holding focus flex) optional step.
- Slide flex through openings on rear lens housing to remove housing.

## Step 14



- Hold inner black lens barrel and turn anti-clockwise until inner barrel lifts out.
- Lift inner barrel up and free from lens motor and flex assembly.
- Holding on to pin on inside of outermost lens barrel, turn lens barrel upside down and grasp inner lens as it falls free.

To reassemble your device, follow these instructions in reverse order.