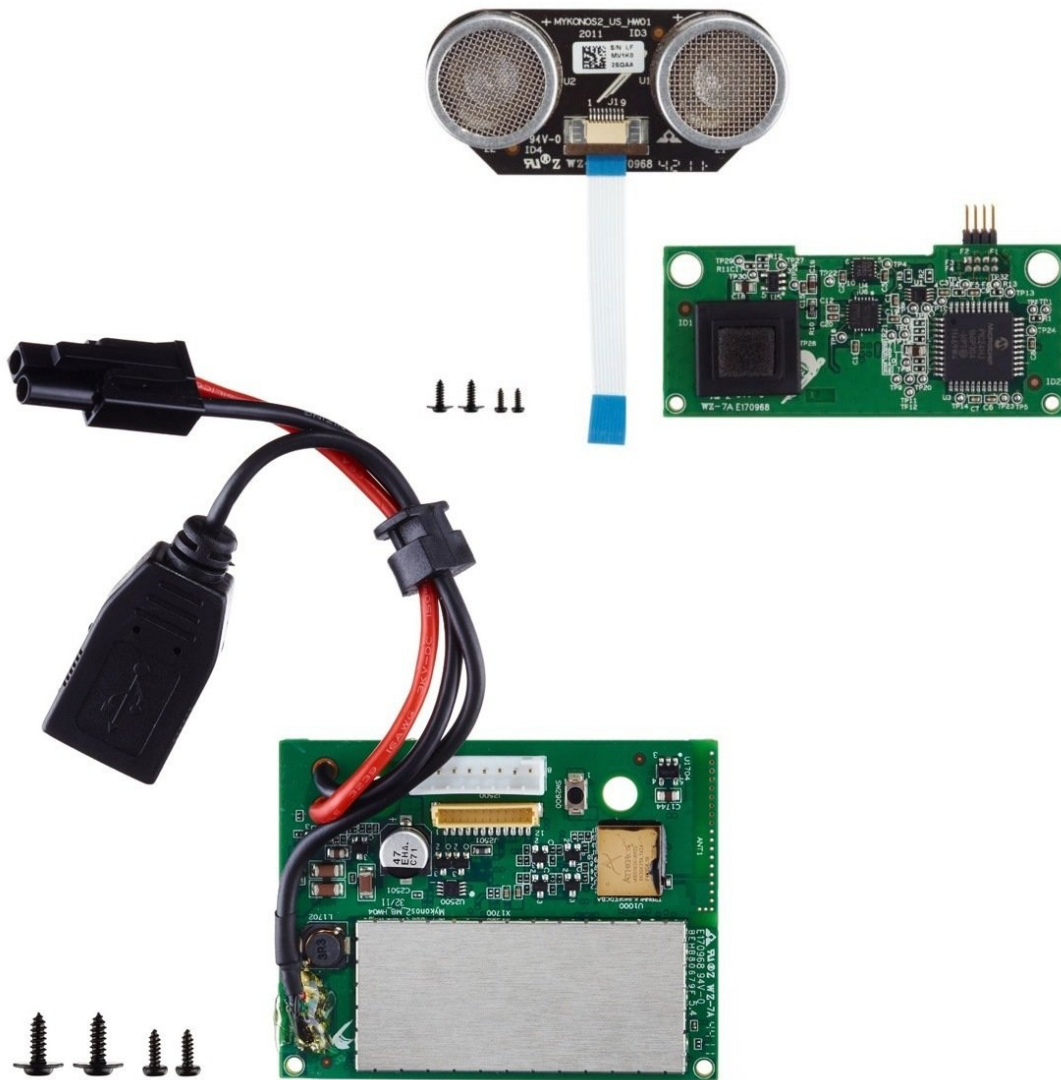




# Parrot AR.Drone 2.0 Mainboard and Navigation Board Replacement

Use this guide to replace the mainboard and...

Written By: David Hoyt



# INTRODUCTION

Use this guide to replace the mainboard and navigation board in your Parrot AR.Drone 2.0.

AR.Drone 2.0 spare parts and mounting tools are available from [several Parrot retailers](#).

[video: <http://youtu.be/zdZELplzBOE>]

## TOOLS:

[Heavy-Duty Spudger](#) (1)

[T6 Torx Screwdriver](#) (1)

[Phillips #000 Screwdriver](#) (1)

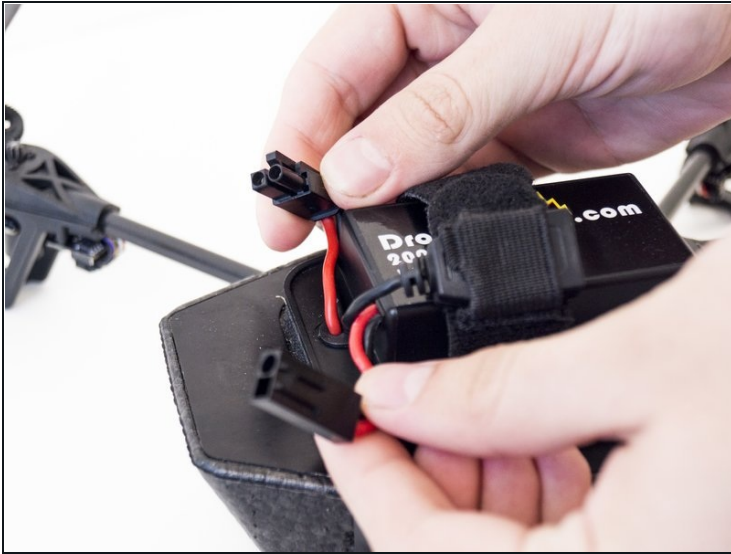
[iFixit Tech Knife](#) (1)

## Step 1 — Mainboard and Navigation Board



- Remove the foam body.

## Step 2



- Disconnect the battery by pulling the two red wires apart.
- Remove the battery by releasing the battery retaining straps.

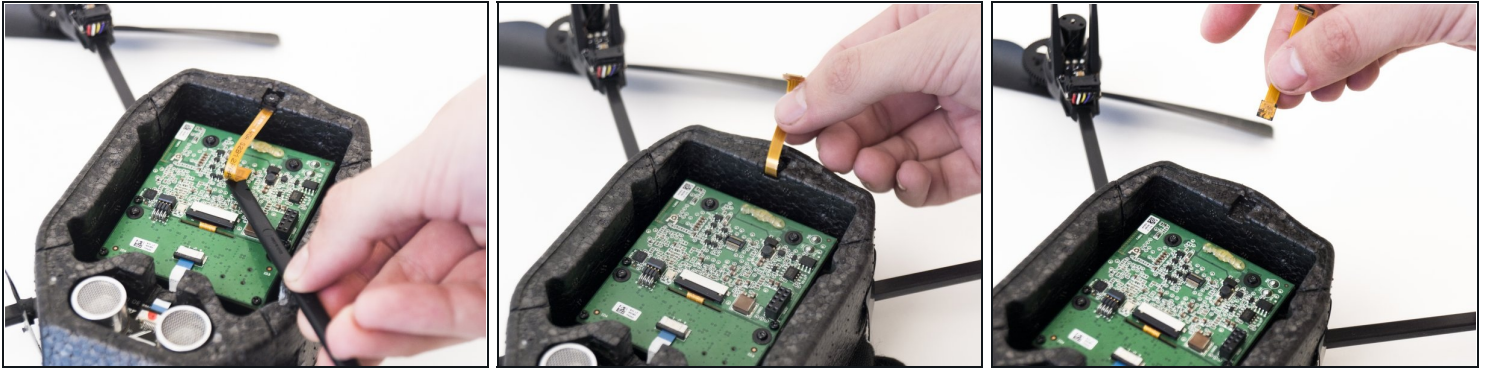
## Step 3



- Turn the drone upside down.
- The cover is held on by plastic tape. Peel off the tape and use a spudger to remove the back cover.

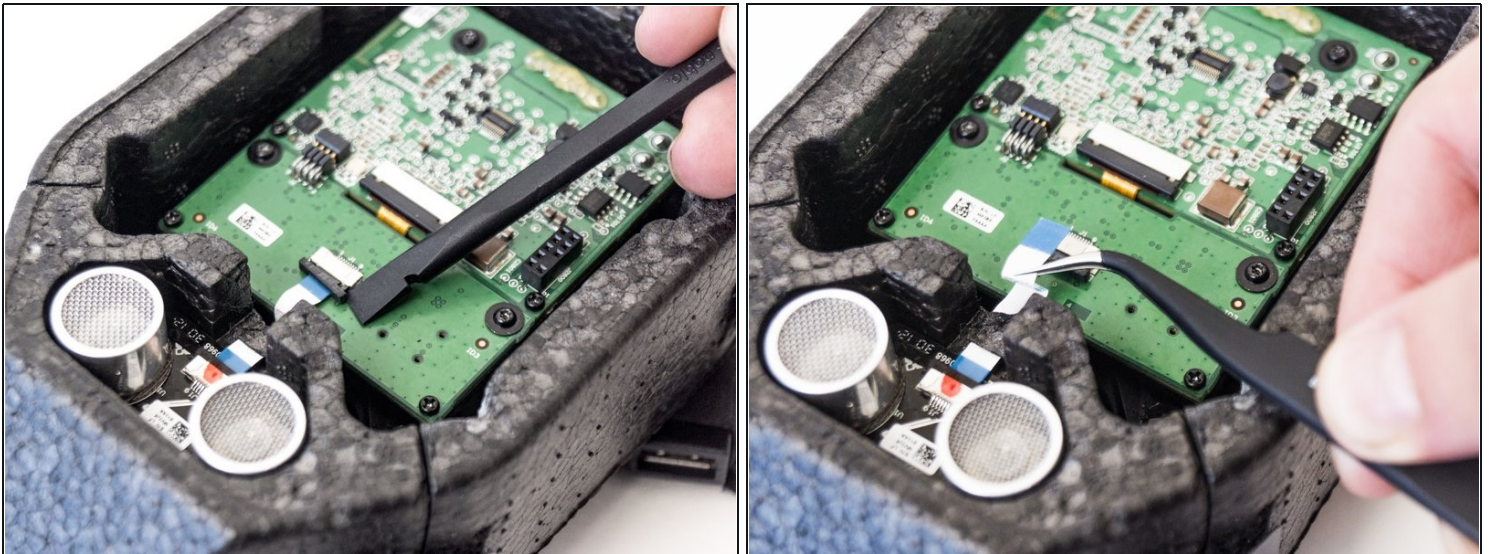


## Step 4



- Using a spudger, separate the connector for the downward camera.
- Remove the camera from the body by pulling it off the foam body.

## Step 5



- Use a spudger to release the black retaining clip. Then disconnect the connector to the sensors.
- Use [tweezers](#) to carefully remove the ribbon from the connector.

## Step 6



- Remove the four 8mm torx screws with a T6 bit.
- Remove the four 8mm philips head screws with a PH00 bit.

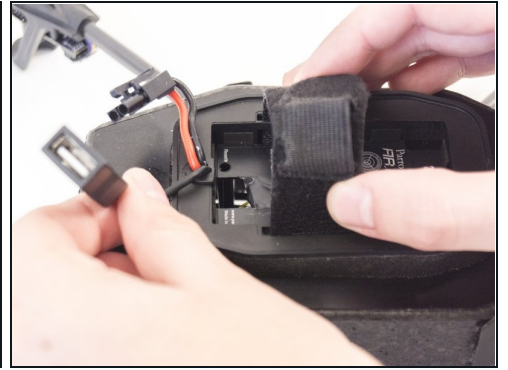
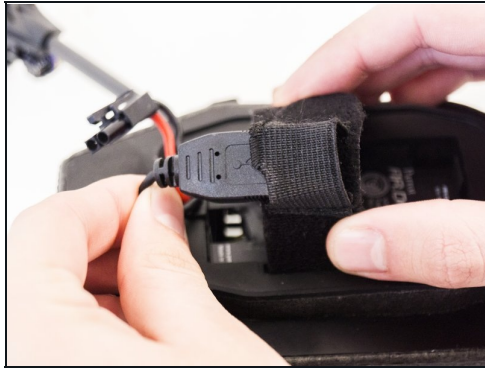
## Step 7



- Carefully pull the secondary board from the mainboard.



## Step 8



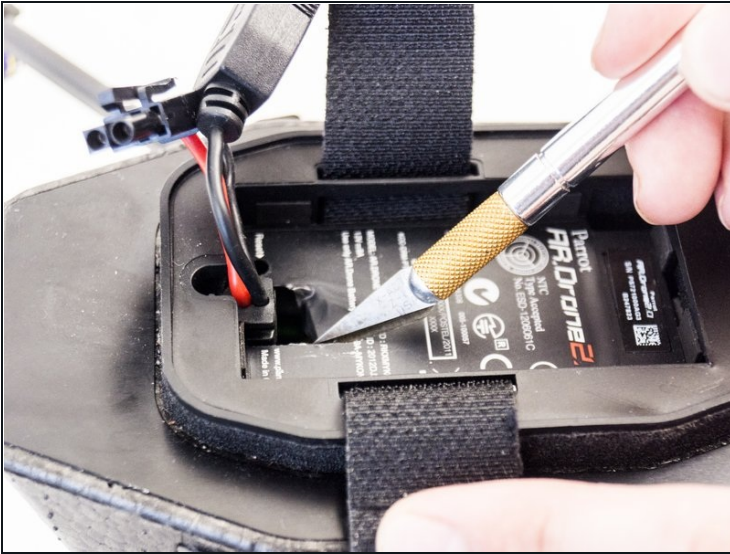
- Turn the drone right side up
- Remove the USB connector from the battery retaining straps.

## Step 9



- Release the rubber clip holding the USB and battery power cable to the body.

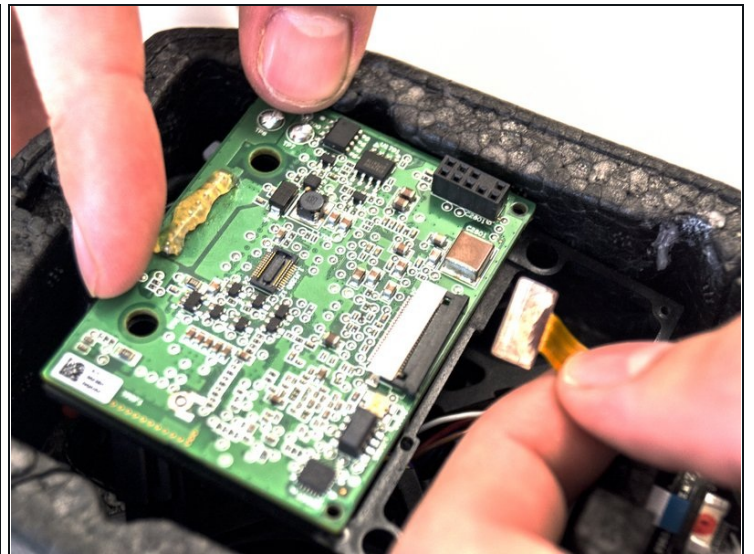
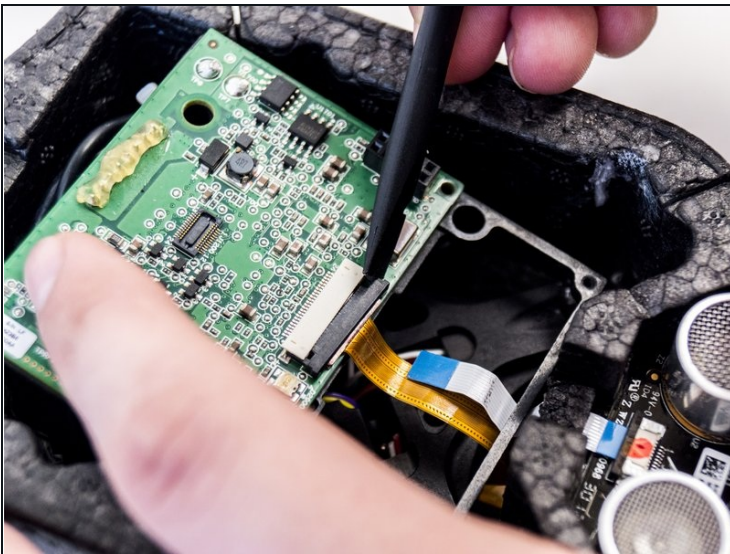
## Step 10



⚠ Avoid using sharp tools near the battery.

- Push the USB and power cable through the battery panel.

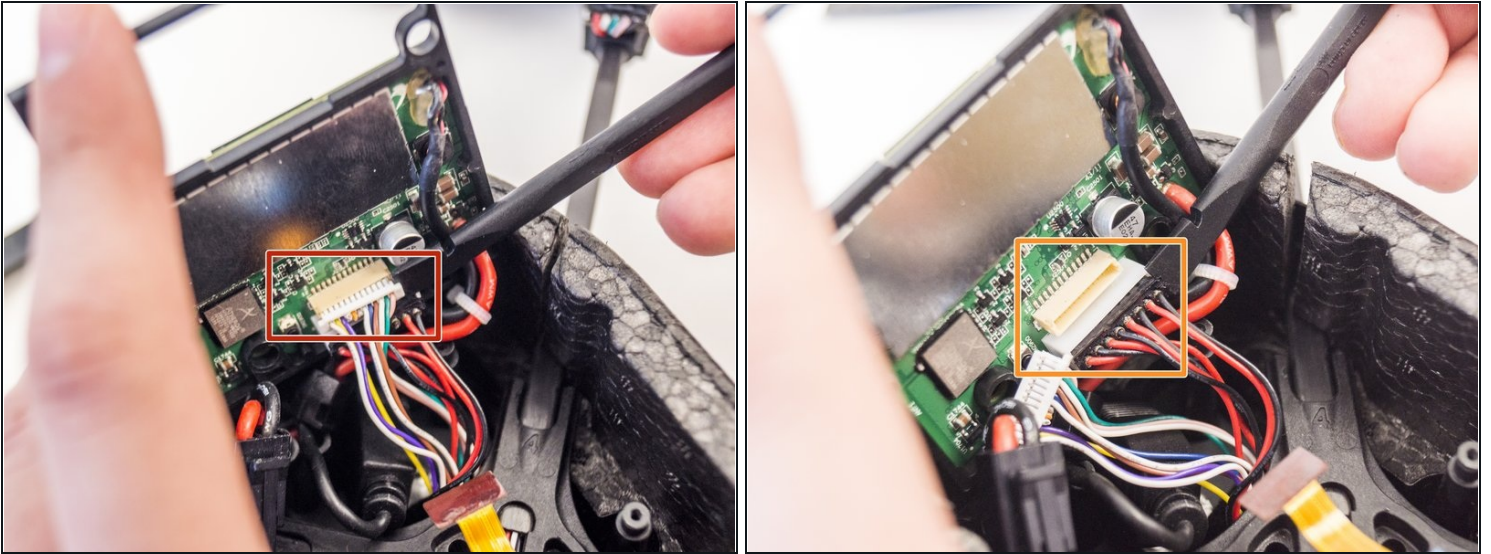
## Step 11



- Turn the drone upside down again.
- Use a spudger to release the connector and carefully remove the ribbon.

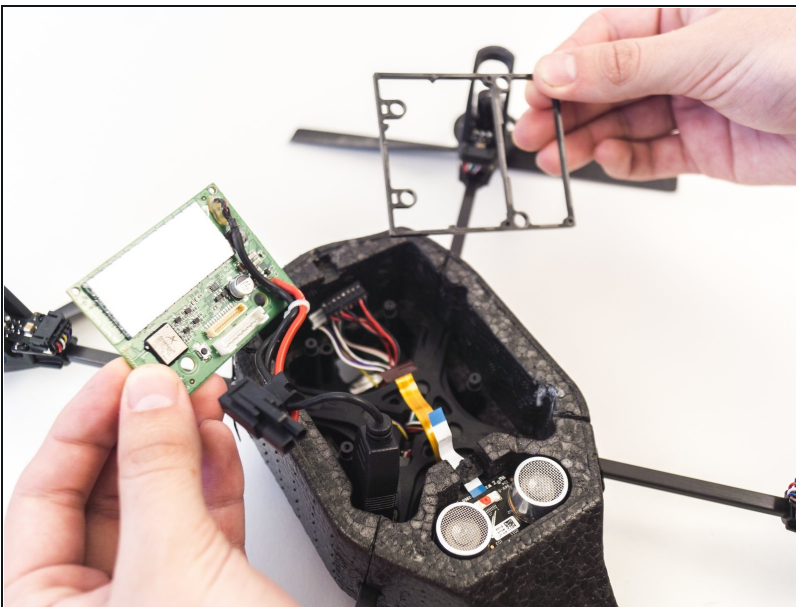


## Step 12



- Lift the mainboard up so that you can access the back.
- Disconnect the first connector with the white wires using a nylon spudger.
- Disconnect the second connector with the red and black wires using a spudger.

## Step 13



- The mainboard is now fully detached and can be removed.

To reassemble your device, follow these instructions in reverse order.



