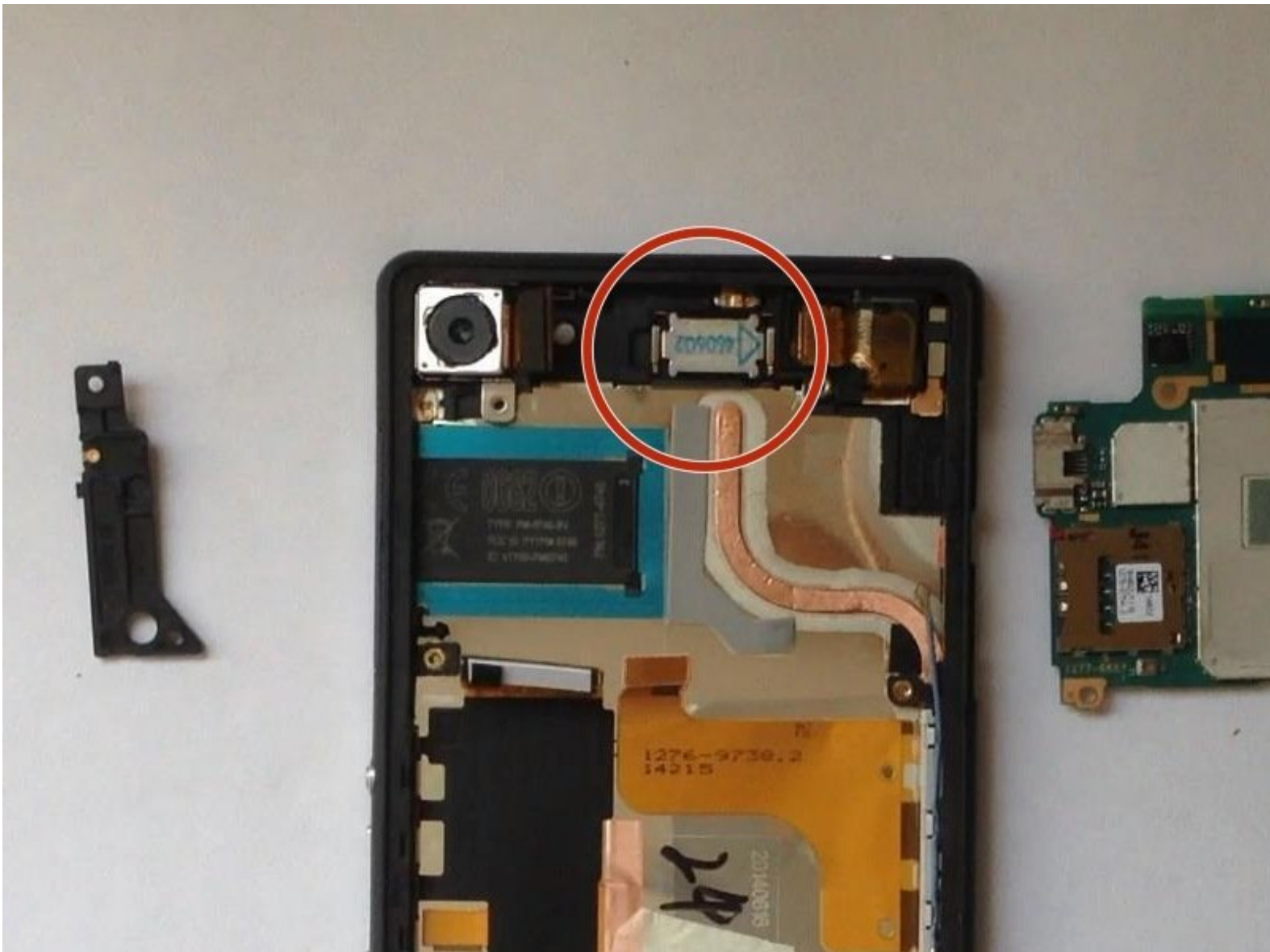




Sony Xperia Z2 Earpiece Replacement

Sony Xperia Z2 Earpiece Replacement

Written By: ZFix



INTRODUCTION

Sony Xperia Z2 (D6502, D6503, and D6543) - How to disassemble the phone and replace the Earpiece.

[Please SUBSCRIBE to my channel ツ](#)

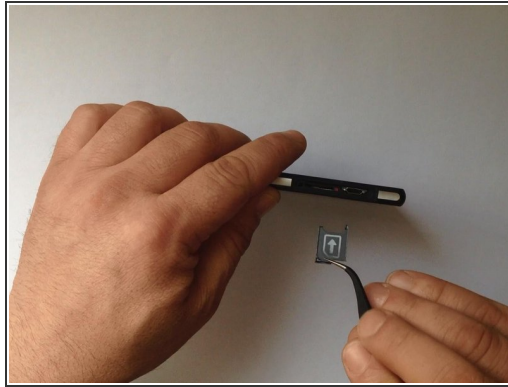
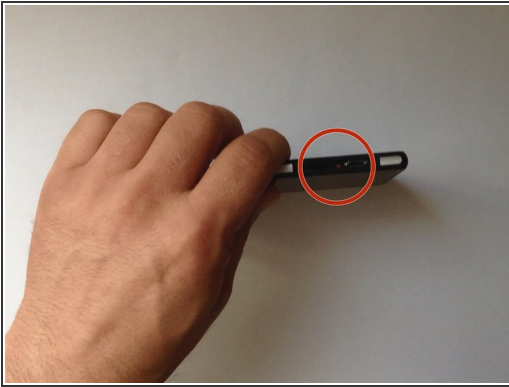
[video: <http://youtu.be/qgkuhEw-CtQ>]



PARTS:

- [Sony Xperia Z2 Earpiece Speaker](#) (1)

Step 1 — Rear / Battery Cover



- Switch off the phone.
- If you can't switch it off, you can use the OFF button near to the SIM card Tray.
- Warm the Back Cover. You can use a hairdryer.

⚠ Be careful, the Back Cover is plastic.

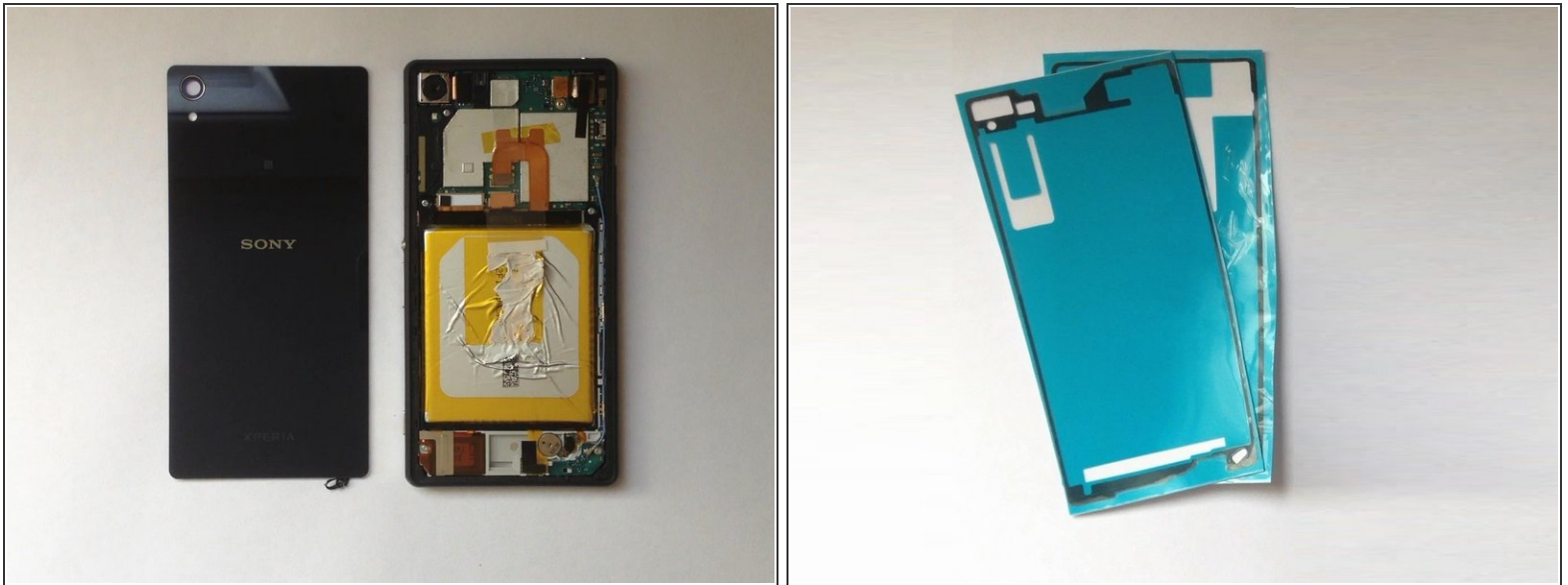
Step 2



- Use a small suction cup and plastic tools for separating the Rear panel.

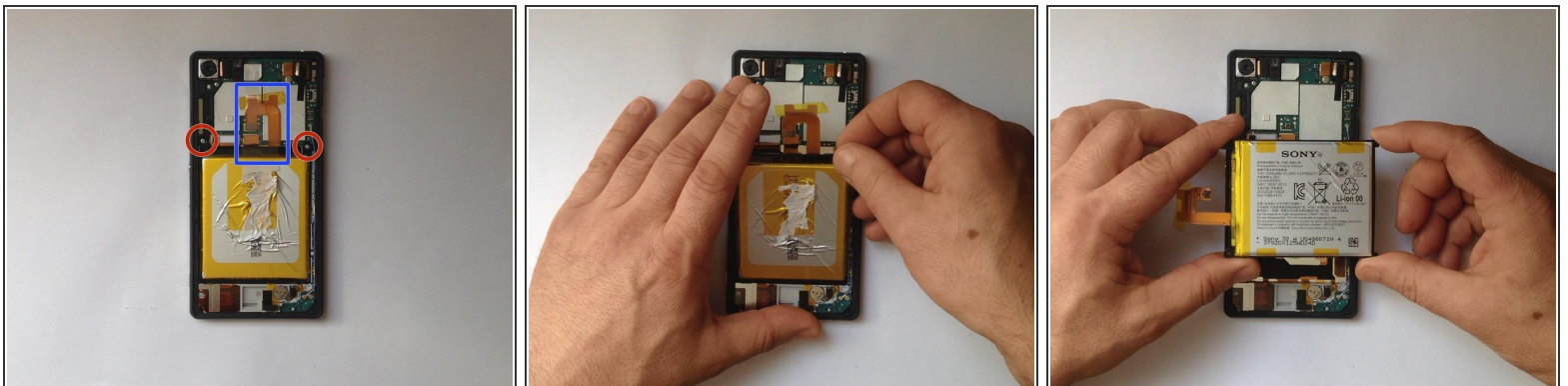
⚠ There is Adhesive tape on the edges of the phone and some between the Battery and the Back Cover, as well. I found a small tab to pull just inside the top of the cover that removed the adhesive and released the back panel from the battery. Its that same style adhesive strip as used in the Iphone 5/5c/5s.

Step 3



- Before installing the new cover, you must clean the phone from the old adhesive tape and install a new one (if your spare part has come without double sided adhesive tape).

Step 4 — Battery

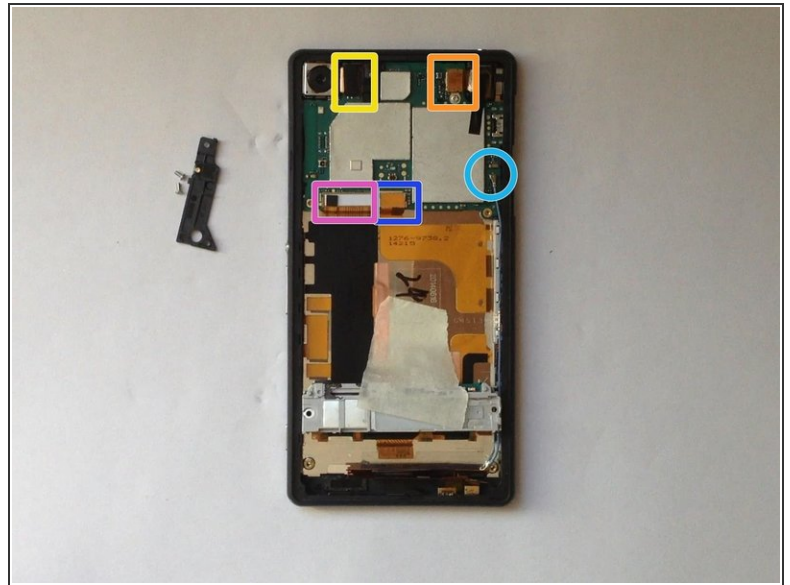
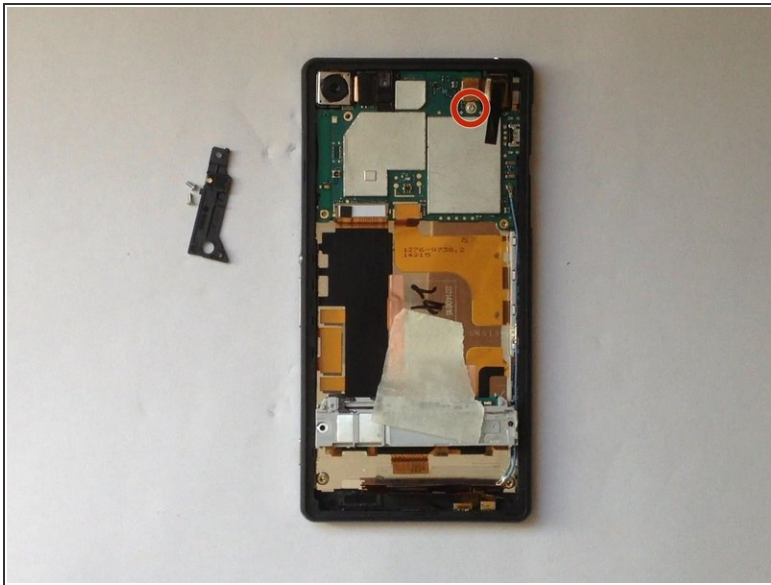


- Disconnect the Battery Flex Cable and remove the two Philips screws.
- Li-Polymer Battery, 3.8V, 3200mAh
- Part number: **LIS1543ERPC**



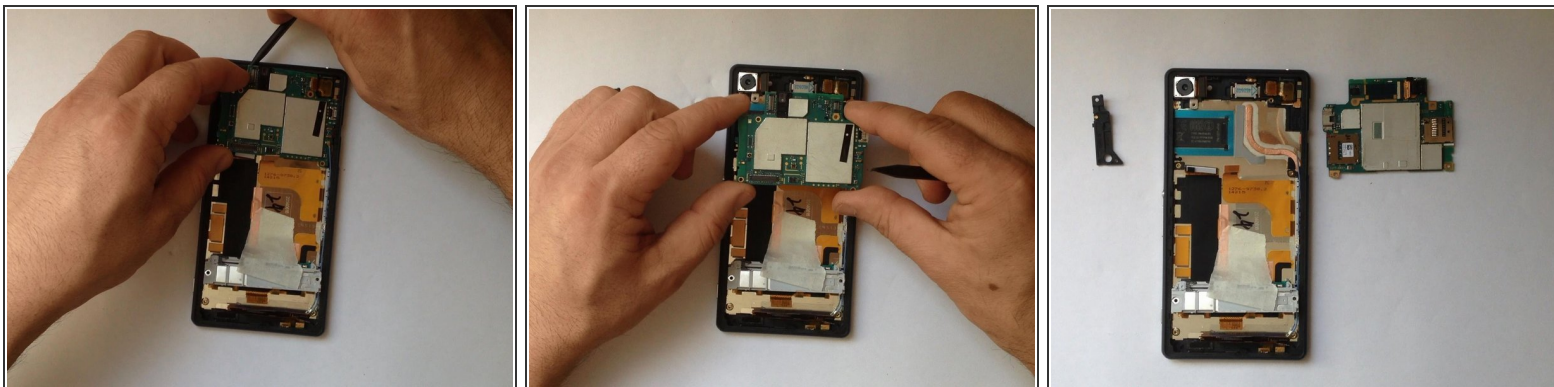
[Please SUBSCRIBE to my channel ツ](#)

Step 5 — Logic Board



- Disconnect one by one:
 - Magnetic Charging Dock Flex Cable
 - Volume / Power Button and Microphone Flex Cable
 - Main Camera
 - Audio Jack and Light Sensor Flex cable
 - Coaxial Antenna Cable

Step 6



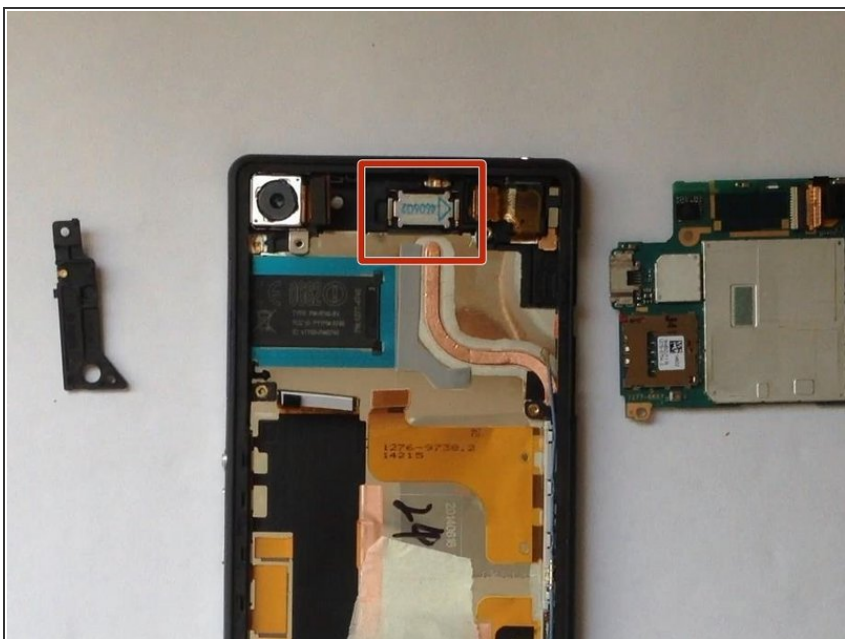
- Took the Logic Board, making it pick up first on the left side

⚠ Be careful not to tear up a cable.

● .

★ [Please SUBSCRIBE to my channel ツ](#)

Step 7 — Earpiece



- Earpiece
- Part Number: VWRS087 / ZVRS087
- .

★ [Please SUBSCRIBE to my channel ツ](#)

To reassemble your device, follow these instructions in reverse order.

