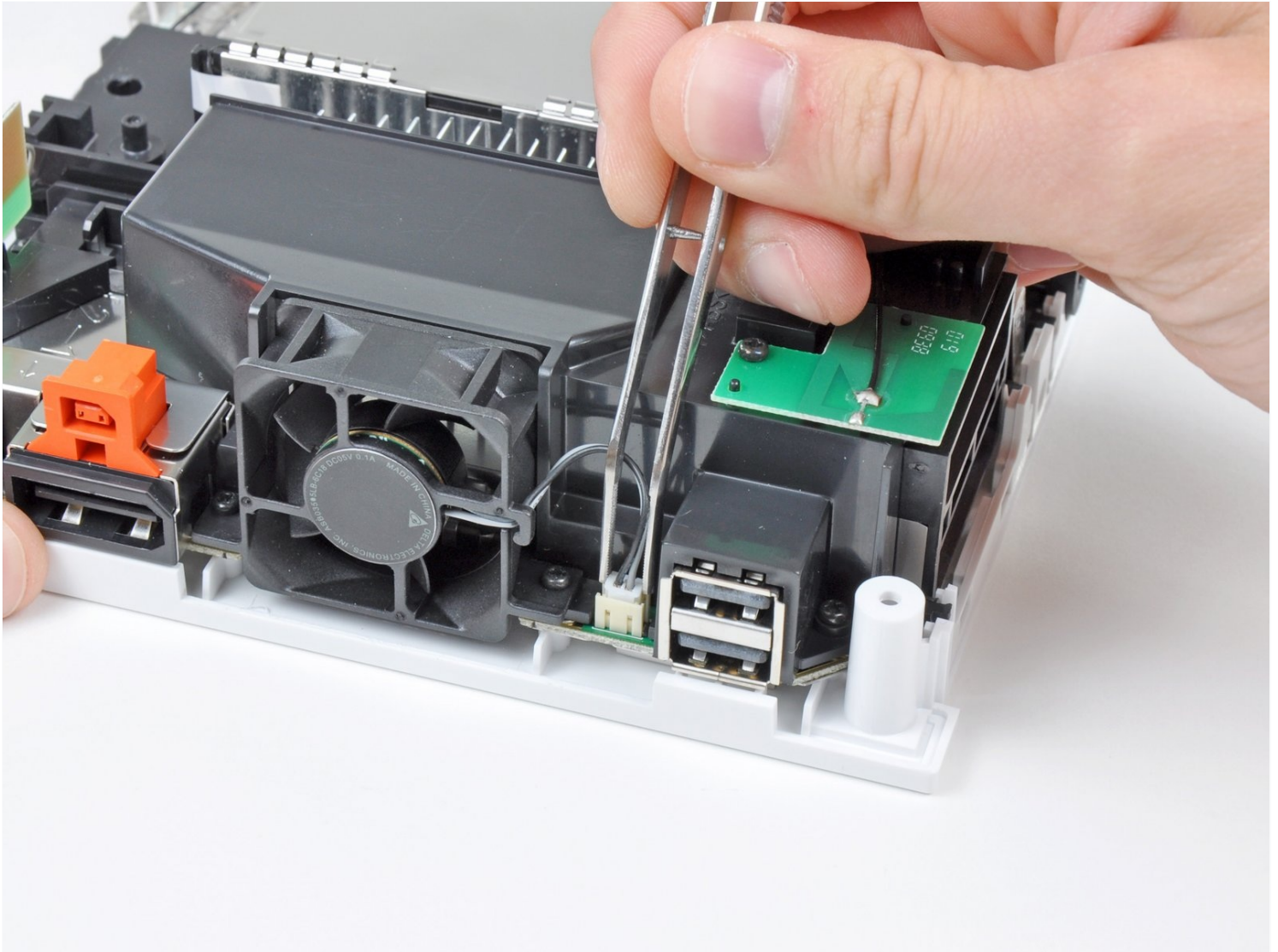




# Nintendo Wii Motherboard Cover Replacement

Written By: Andrew Bookholt



---

## TOOLS:

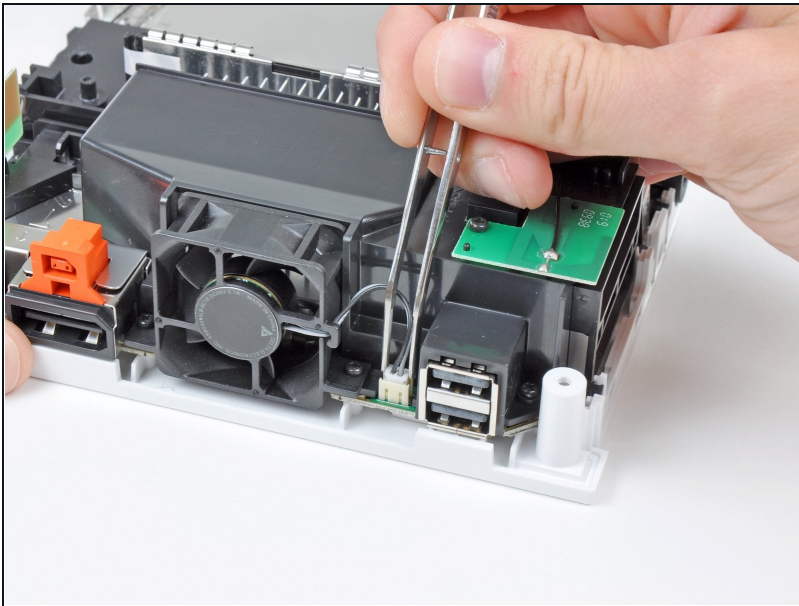
Phillips #0 Screwdriver (1)

Spudger (1)


Tweezers (1)

---

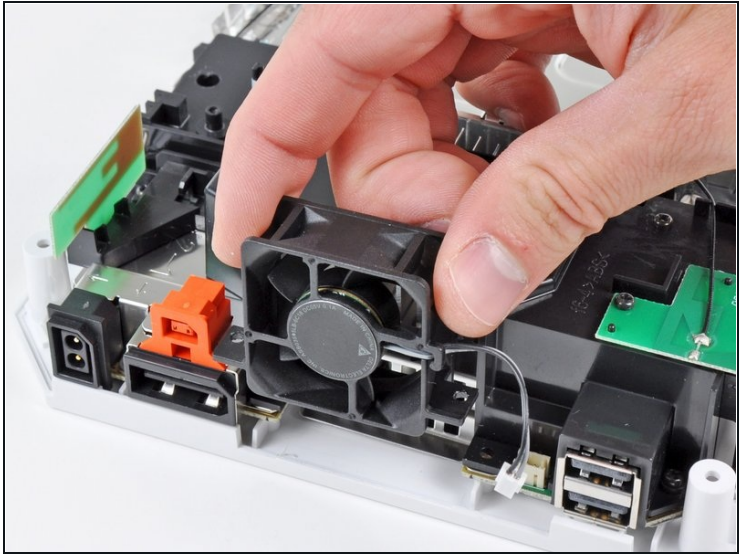
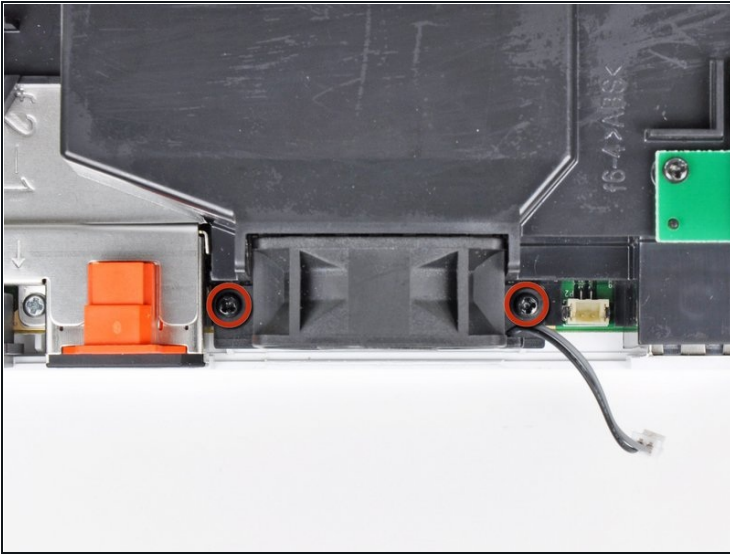
### Step 1 — Motherboard Cover



- Use a pair of [tweezers](#) to lift the fan connector up and out of its socket on the logic board.

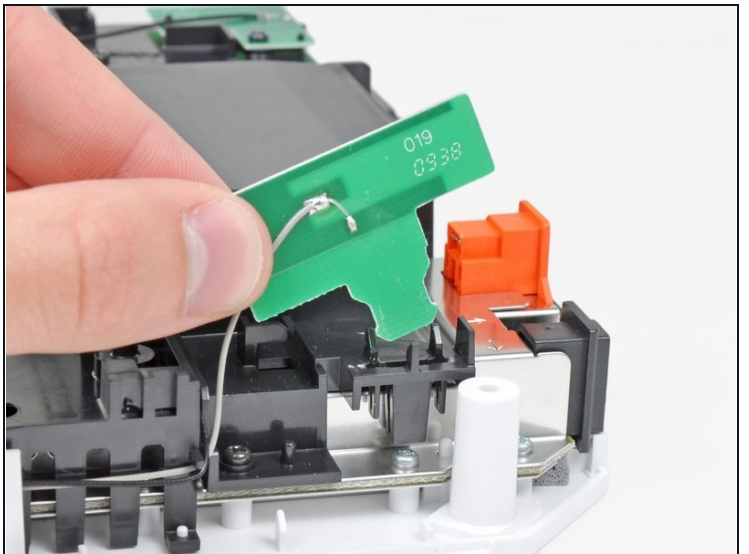
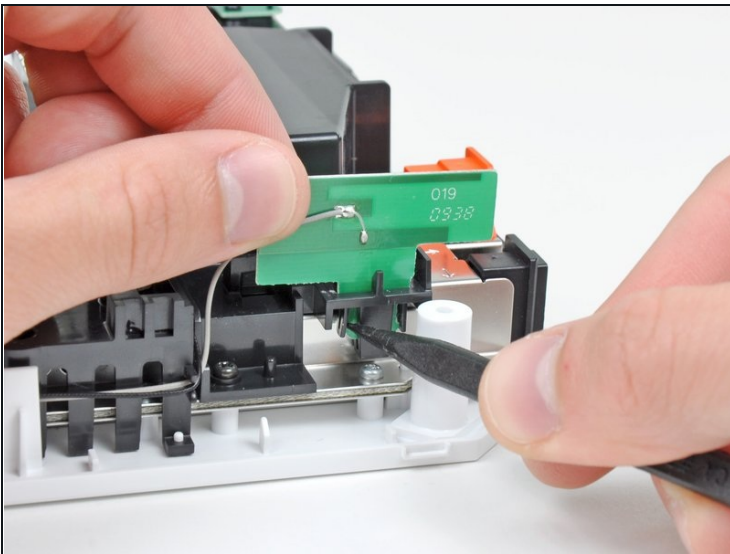
 Be sure your tweezers are clamped down on the fan connector, **not** the socket on the motherboard.

## Step 2



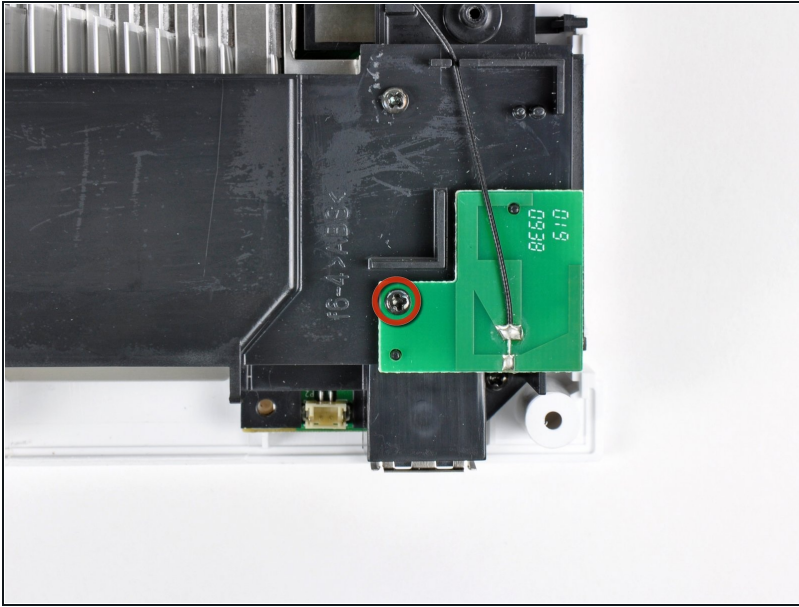
- Remove the two 10 mm Phillips screws securing the fan to the fan shroud.
- Remove the fan from the Wii.

## Step 3



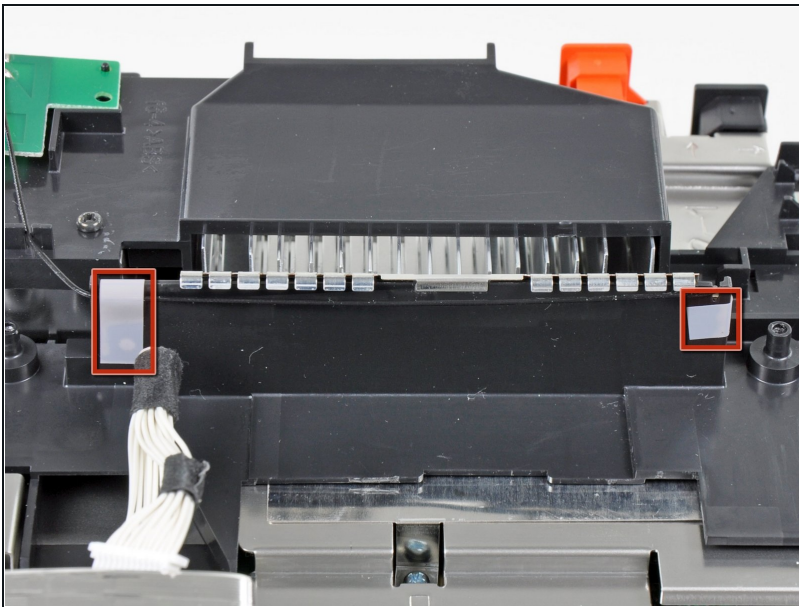
- Use the tip of a spudger or another fine-pointed tool to carefully pry one of the black plastic retaining fingers attached to the fan shroud away from the Wi-Fi antenna board.
- Lift the Wi-Fi antenna out of the fan shroud.

## Step 4



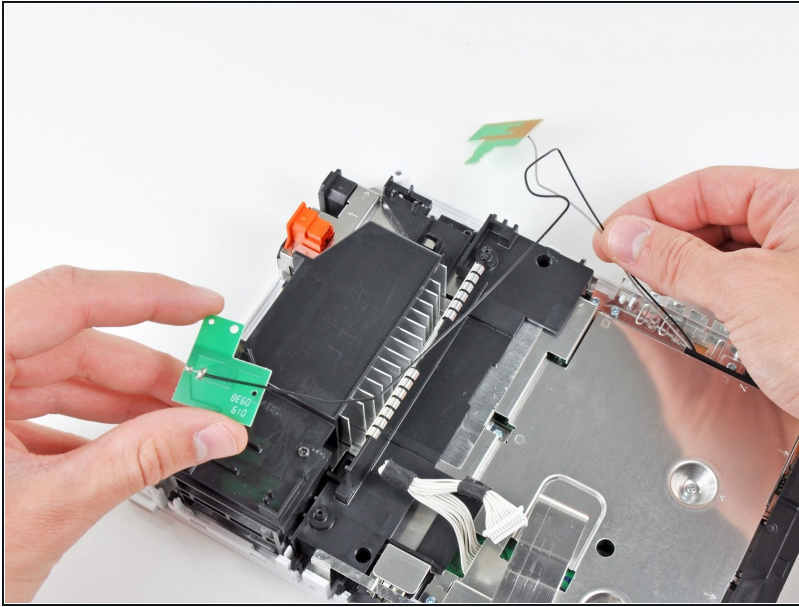
- Remove the single 10 mm Phillips screw securing the second Wi-Fi antenna to the top of the fan shroud.

## Step 5



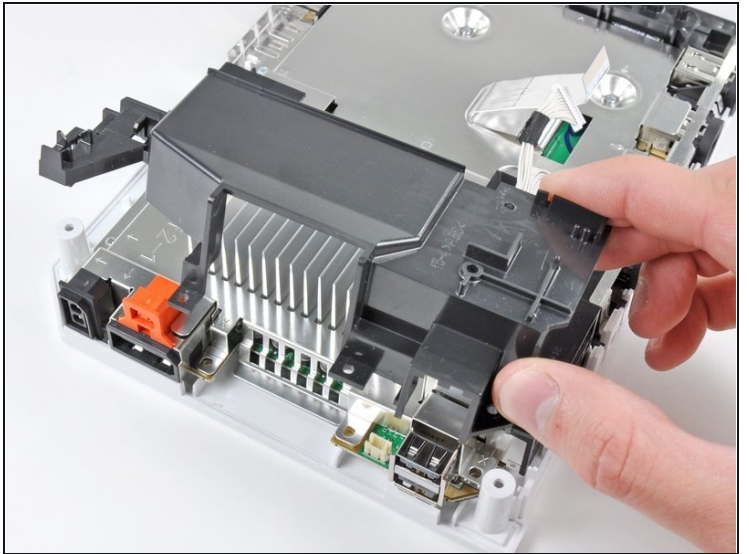
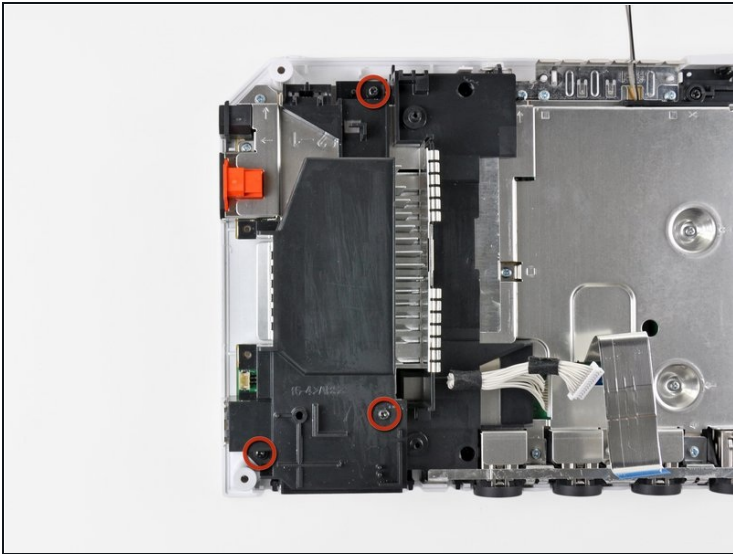
- Remove the two pieces of tape securing the second Wi-Fi antenna cable to the plastic bracket near the heat sink.

## Step 6



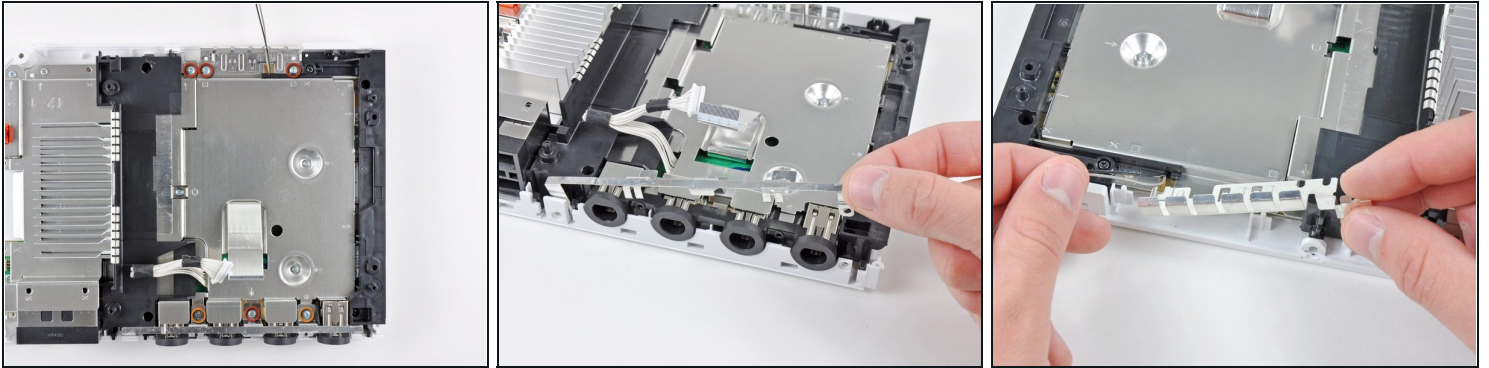
- Carefully de-route both antennas from the frame of the Wii and lay them aside.

## Step 7



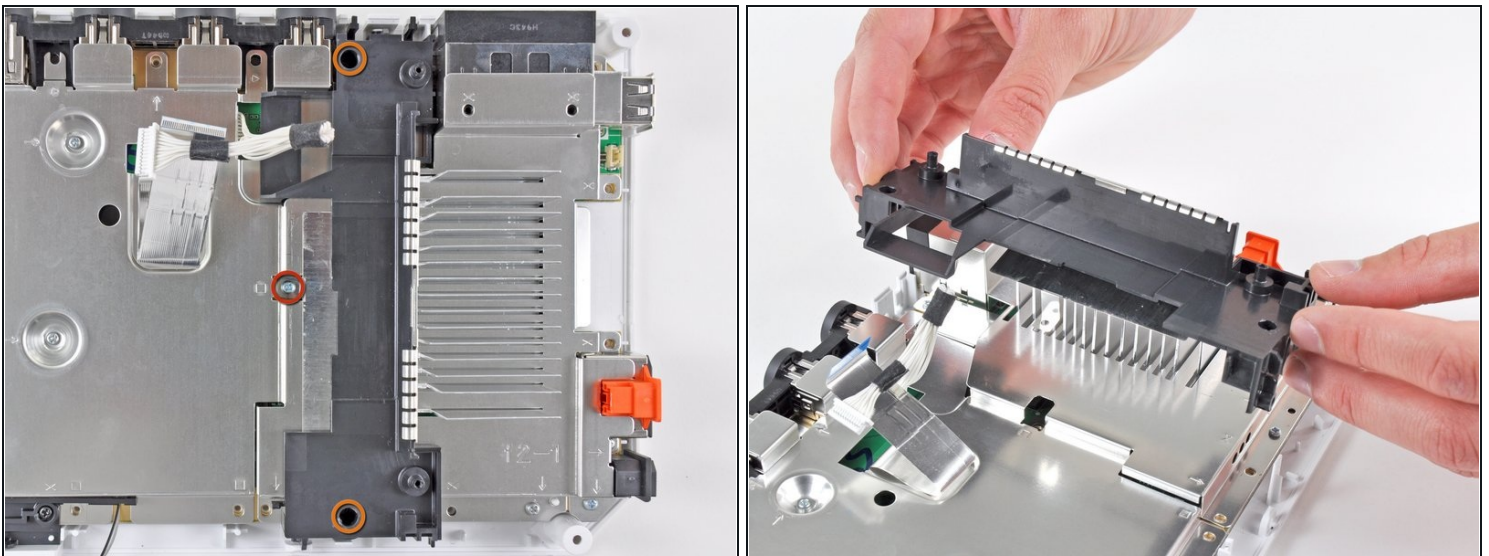
- Remove the three 10 mm Phillips screws securing the fan shroud to the Wii.
- Lift the fan shroud off the heat sink and remove it from the Wii.

## Step 8



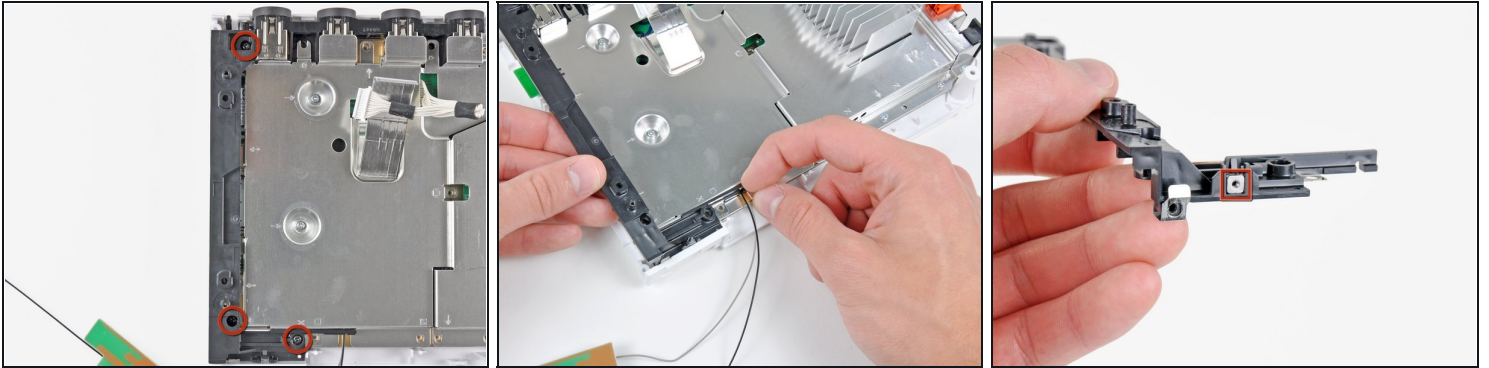
- Remove the following six screws securing the EMI fingers to the bottom panel:
  - Four 7 mm Phillips screws
  - Two 11.3 mm Phillips screws
- Remove both sets of EMI fingers from the Wii.

## Step 9



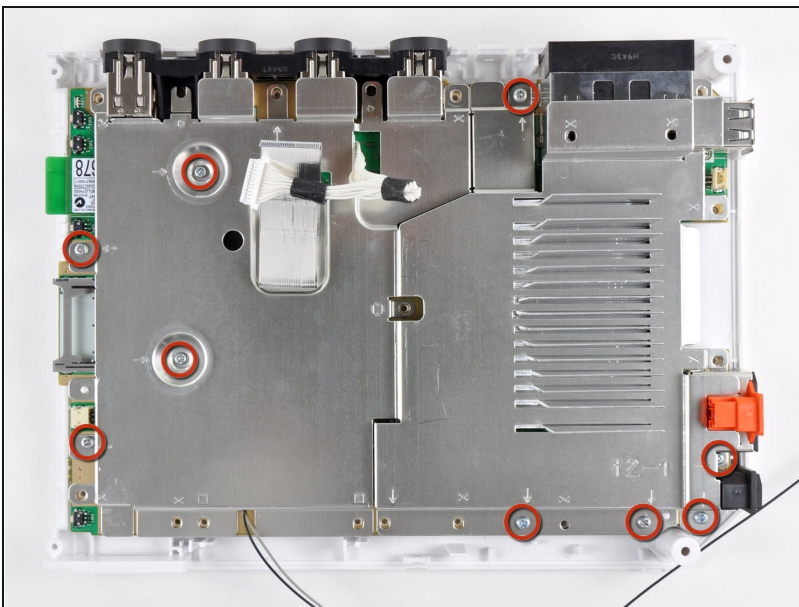
- Remove the following three screws:
  - One 7 mm Phillips screw
  - Two 10 mm Phillips screws
- Lift the bracket out of the Wii.

## Step 10



- Remove the three 10 mm Phillips screws securing the black bracket to the bottom panel near the front of the Wii.
  - Slightly lift the bracket and use your other hand to pull the retaining clip away from where the Wi-Fi antennas enter the motherboard shield.
  - Remove the bracket from the Wii.
- ⓘ Be sure not to lose the small square nut loosely held by the black plastic bracket.

## Step 11



- Remove the nine remaining 7 mm Phillips screws securing the motherboard cover to the bottom panel.

## Step 12



- Carefully lift the motherboard cover off the motherboard, minding any cables that may get caught.
- ★ On some models, a thermal pad for the wireless chip is attached to the underside of the motherboard cover. Be sure to replace it when reassembling.

---

To reassemble your device, follow these instructions in reverse order.